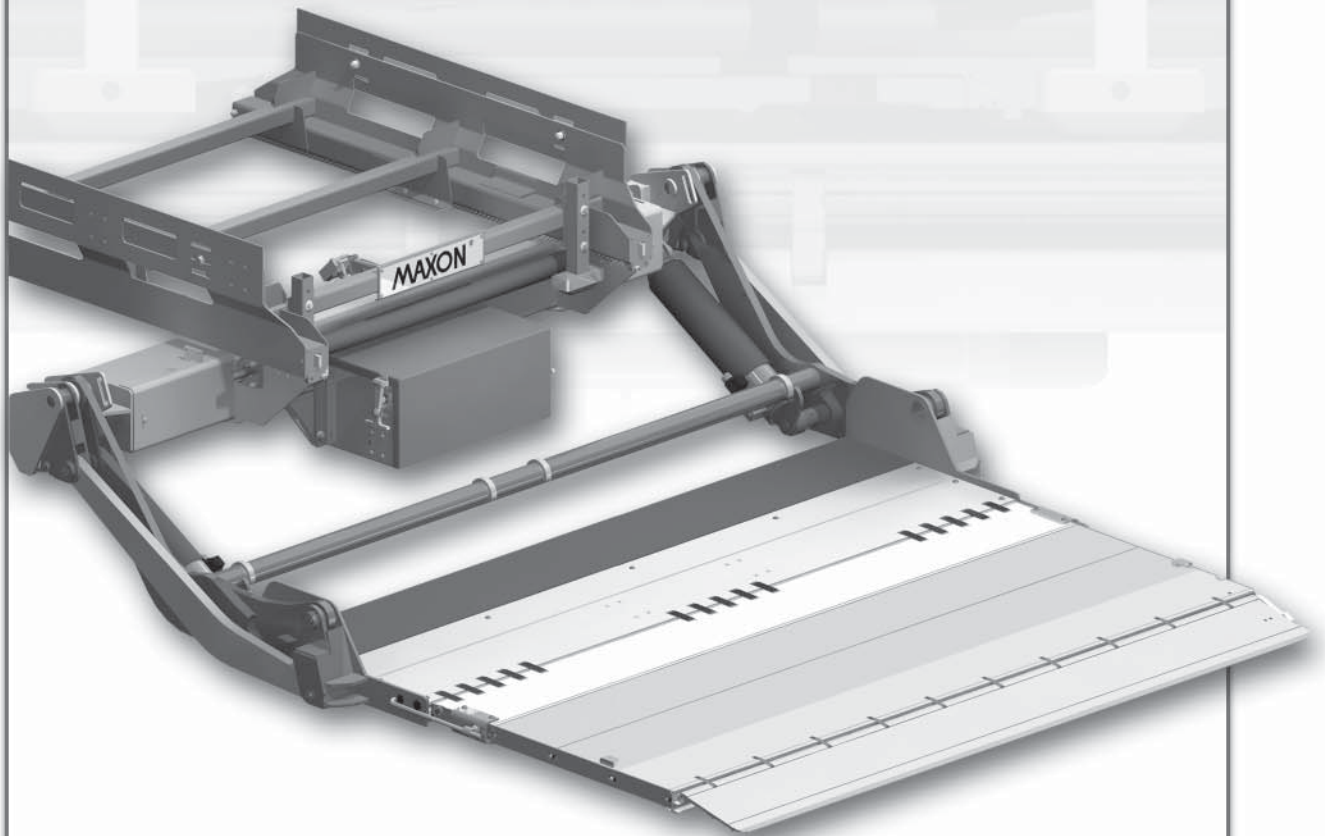


M-08-14  
REV. B  
MARCH 2011

# MAXON<sup>®</sup> GPSLR Series

## MAINTENANCE MANUAL GPSLR-33 & GPSLR-44





# MAXON<sup>®</sup>

## LIFT CORP.

11921 Slauson Ave.  
Santa Fe Springs, CA. 90670

### CUSTOMER SERVICE:

TELEPHONE (562) 464-0099 TOLL FREE (800) 227-4116

FAX: (888) 771-7713

NOTE: For latest version of all Manuals (and replacements), download the Manuals from Maxon's website at [www.maxonlift.com](http://www.maxonlift.com).

## WARRANTY/ RMA POLICY & PROCEDURE

### LIFTGATE WARRANTY

Type of Warranty: Full Parts and Labor

Term of Warranty: Standard Liftgates - 2 years from ship date or 6,000 cycles  
Premium Liftgates - 2 years from ship date or 10,000 cycles

This warranty shall not apply unless the product is installed, operated and maintained in accordance with MAXON Lift's specifications as set forth in MAXON Lift's Installation, Operation and Maintenance manuals. This warranty does not cover normal wear, maintenance or adjustments, damage or malfunction caused by improper handling, installation, abuse, misuse, negligence, or carelessness of operation. In addition, this warranty does not cover equipment that has had unauthorized modifications or alterations made to the product.

MAXON agrees to replace any components which are found to be defective during the first 2 years of service, and will reimburse for labor based on MAXON's Liftgate Warranty Flat Rate Schedule. (Copy of the Flat Rate is available at [www.maxonlift.com](http://www.maxonlift.com).)

All warranty repairs must be performed by an authorized MAXON warranty facility. For any repairs that may exceed \$500, including parts and labor, MAXON's Technical Service Department must be notified and an "Authorization Number" obtained.

All claims for warranty must be received within 30 Days of the repair date, and include the following information:

1. Liftgate Model Number and Serial Number
2. The End User must be referenced on the claim
3. Detailed Description of Problem
4. Corrective Action Taken, and Date of Repair
5. Parts used for Repair, Including MAXON Part Number(s)
6. MAXON R.M.A. # and/or Authorization # if applicable (see below)
7. Person contacted at MAXON if applicable
8. Claim must show detailed information i.e. Labor rate and hours of work performed

Warranty claims can also be placed online at [www.maxonlift.com](http://www.maxonlift.com). Online claims will be given priority processing.

All claims for warranty will be denied if paperwork has not been received or claim submitted via Maxon website for processing by MAXON's Warranty Department within 30 days of repair date.

All components may be subject to return for inspection, prior to the claim being processed. MAXON products may not be returned without prior written approval from MAXON's Technical Service Department. Returns must be accompanied by a copy of the original invoice or reference with original invoice number and are subject to a credit deduction to cover handling charges and any necessary reconditioning costs. **Unauthorized returns will be refused and will become the responsibility of the returner.**

Any goods being returned to MAXON Lift must be pre-approved for return, and have the R.M.A. number written on the outside of the package in plain view, and returned freight prepaid. All returns are subject to a 15% handling charge if not accompanied by a detailed packing list. Returned parts are subject to no credit and returned back to the customer. Defective parts requested for return must be returned within 30 days of the claim date for consideration to:

MAXON Lift Corp.  
10321 Greenleaf Ave., Santa Fe Springs, CA 90670  
Attn: RMA# \_\_\_\_\_

MAXON's warranty policy does not include the reimbursement for travel time, towing, vehicle rental, service calls, oil, batteries or loss of income due to downtime. Fabrication or use of non Maxon parts, which are available from MAXON, are also not covered.

MAXON's Flat Rate Labor Schedule takes into consideration the time required for diagnosis of a problem.

All Liftgates returned are subject to inspection and a 15% restocking fee. Any returned Liftgates or components that have been installed or not returned in new condition will be subject to an additional reworking charge, which will be based upon the labor and material cost required to return the Liftgate or component to new condition.

### PURCHASE PART WARRANTY

Term of Warranty: 1 Year from Date of Purchase.

Type of Warranty: Part replacement only. MAXON will guarantee all returned genuine MAXON replacement parts upon receipt and inspection of parts and original invoice.

All warranty replacements parts will be sent out via ground freight. If a rush shipment is requested, all freight charges will be billed to the requesting party.

# TABLE OF CONTENTS

<b>WARNINGS</b> .....	<b>6</b>
<b>SAFETY INSTRUCTIONS</b> .....	<b>6</b>
LIFTGATE TERMINOLOGY .....	9
<b>PERIODIC MAINTENANCE</b> .....	<b>10</b>
PERIODIC MAINTENANCE CHECKS.....	10
PERIODIC MAINTENANCE CHECKLIST.....	11
CHECKING HYDRAULIC FLUID .....	12
CHANGING HYDRAULIC FLUID.....	14
PLATFORM ADJUSTMENT .....	16
<b>PARTS BREAKDOWN</b> .....	<b>18</b>
MAIN ASSEMBLY.....	18
RAIL FRAME ASSEMBLY .....	20
SLIDE ASSEMBLY .....	22
SLIDE LOCK ASSEMBLY .....	26
PLATFORM & FLIPOVER ASSEMBLY (FIXED RAMP).....	27
PLATFORM & FLIPOVER ASSEMBLY (SINGLE CART STOP) .....	28
PLATFORM & FLIPOVER ASSEMBLY (DUAL CART STOP).....	29
PLATFORM & FLIPOVER ASSEMBLY (SINGLE RETENTION RAMP) .....	30
PLATFORM & FLIPOVER ASSEMBLY (DUAL RETENTION RAMPS).....	31
PLATFORM ASSEMBLY WITH SINGLE TORSION BAR .....	32
PLATFORM ASSEMBLY WITH DUAL TORSION BAR .....	34
FLIPOVER WITH FIXED RAMP.....	36
FLIPOVER WITH SINGLE CART STOP .....	38
FLIPOVER WITH DUAL CART STOPS .....	40

FLIPOVER WITH SINGLE RETENTION RAMP .....	42
FLIPOVER WITH DUAL RETENTION RAMPS .....	44
PUMP BOX ASSEMBLY (SMART STOW) .....	46
PUMP BOX ASSEMBLY (WITHOUT CONTROLLER) .....	48
HYDRAULIC COMPONENTS .....	50
ELECTRICAL COMPONENTS (SMART STOW) .....	54
ELECTRICAL COMPONENTS (WITHOUT CONTROLLER) .....	56
12 VDC POWER UNIT .....	58
DECALS (WITH SMART STOW) .....	60
DECALS (WITHOUT CONTROLLER) .....	62
<b>SYSTEM DIAGRAMS .....</b>	<b>66</b>
PUMP & MOTOR SOLENOID OPERATION .....	66
HYDRAULIC SCHEMATIC .....	67
ELECTRICAL SCHEMATIC (SMART STOW) .....	68
ELECTRICAL SCHEMATIC (WITHOUT CONTROLLER) .....	69
<b>TROUBLESHOOTING .....</b>	<b>70</b>

Comply with the following **WARNINGS** and **SAFETY INSTRUCTIONS** while maintaining Liftgates. See Operation Manual for operating safety requirements.

## **WARNING**

- Do not stand, or allow obstructions, under the platform when lowering the Liftgate. **Be sure your feet are clear of the Liftgate.**
- **Keep fingers, hands, arms, legs, and feet clear of moving Liftgate parts (and platform edges) when operating the Liftgate.**
- **Correctly stow platform when not in use. Extended platforms could create a hazard for people and vehicles passing by.**
- **Disconnect Liftgate power cable from battery** before repairing or servicing Liftgate.
- If it is necessary to stand on the platform while maintaining the Liftgate, keep your feet and any objects clear of the inboard edge of the platform. Your feet or objects on the platform can become trapped between the platform and the Liftgate extension plate.
- Recommended practices for welding on steel parts are contained in the current **AWS (American Welding Society) D1.1 Structural Welding Code - Steel**. Damage to Liftgate and/or vehicle, and personal injury could result from welds that are done incorrectly.
- Recommended practices for welding on aluminum parts are contained in the current **AWS (American Welding Society) D2.1 Structural Welding Code - Aluminum**. Damage to Liftgate and/or vehicle, and personal injury could result from welds that are done incorrectly.

## **SAFETY INSTRUCTIONS**

- Read and understand the instructions in this **Maintenance Manual** before performing maintenance on the Liftgate.
- Before operating the Liftgate, read and understand the operating instructions in **Operation Manual**.
- Comply with all **WARNING** and instruction decals attached to the Liftgate.
- Keep decals clean and legible. If decals are illegible or missing, replace them. Free replacement decals are available from **Maxon Customer Service**.
- Consider the safety and location of bystanders and location of nearby objects when operating the Liftgate. Stand to one side of the platform while operating the Liftgate
- Do not allow untrained persons or children to operate the Liftgate.
- Wear appropriate safety equipment such as protective eyeglasses, faceshield and clothing while performing maintenance on the Liftgate and handling the battery. Debris from drilling and contact with battery acid may injure unprotected eyes and skin.
- Be careful working by an automotive type battery. Make sure the work area is well ventilated and there are no flames or sparks near the battery. Never lay objects on the battery that can short the terminals together. If battery acid gets in your eyes, immediately seek first aid. If acid gets on your skin, immediately wash it off with soap and water.

**MAXON**<sup>®</sup>

11921 Slauson Ave. Santa Fe Springs, CA. 90670 (800) 227-4116 FAX (888) 771-7713

- If an emergency situation arises (vehicle or Liftgate) while operating the Liftgate, release the control switch to stop the Liftgate.
- A correctly installed Liftgate operates smoothly and reasonably quiet. The only noticeable noise during operation comes from the power unit while the platform is raised. Listen for scraping, grating and binding noises and correct the problem before continuing to operate Liftgate.
- Use only **Maxon Authorized Parts** for replacement parts. Provide Liftgate model and serial number information with your parts order. Order replacement parts from:

**MAXON LIFT CORP. Customer Service**  
**11921 Slauson Ave., Santa Fe Springs, CA 90670**

**Online: [www.maxonlift.com](http://www.maxonlift.com)**

**Express Parts Ordering: Phone (800) 227-4116 ext. 4345**

**Email: Ask your Customer Service representative**

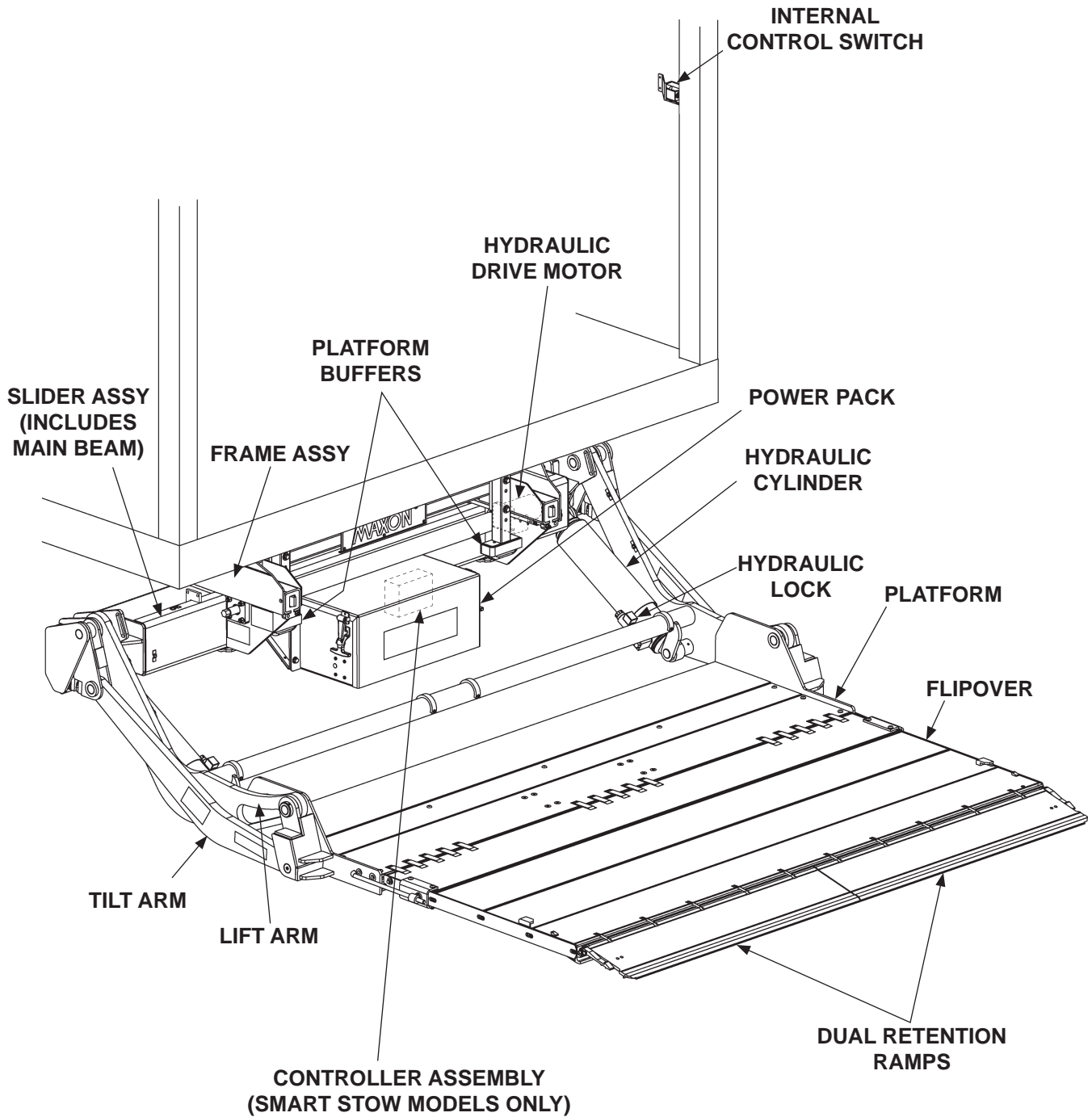
THIS PAGE INTENTIONALLY LEFT BLANK

**MAXON**<sup>®</sup>

11921 Slauson Ave. Santa Fe Springs, CA. 90670 (800) 227-4116 FAX (888) 771-7713



# LIFTGATE TERMINOLOGY



## PERIODIC MAINTENANCE PERIODIC MAINTENANCE CHECKS

### **⚠ WARNING**

**Never operate the Liftgate if parts are loose or missing.**

**NOTE:** Make sure vehicle is parked on level ground while performing the maintenance checks.

### **Quarterly or 1250 Cycles (whichever occurs first)**

Check the hydraulic fluid level in the pump reservoir. Refer to the **CHECKING HYDRAULIC FLUID** procedure in the **PERIODIC MAINTENANCE** section.

If hydraulic fluid appears contaminated, refer to the **CHANGING HYDRAULIC FLUID** procedure in the **PERIODIC MAINTENANCE** section.

Keep track of the grade of hydraulic fluid in the pump reservoir and never mix two different grades of fluid.

Check all hoses and fittings for chafing and fluid leaks. Tighten loose fittings or replace parts as required.

Check electrical wiring for chafing and make sure wiring connections are tight and free of corrosion. Use dielectric grease to protect electrical connections.

Check that all **WARNING and instruction decals** are in place. Also, make sure decals are legible, clean and undamaged.

Check that all bolts, nuts, and roll pins are in place. Make sure roll pins protrude evenly from both sides of hinge pin collar. Replace fasteners and roll pins if necessary.

Check for debris and dirt buildup on the slider rollers and rails. Clean out any buildup of dirt and debris.

### **CAUTION**

**Damaged cylinder seals and contaminated hydraulic fluid can result from painting the polished portion of the cylinder rod. To prevent damage, protect the exposed polished portion of the cylinder rod while painting.**

Check for rust and oily surfaces on Liftgate. If there is rust or oil on Liftgate, clean it off. Touch up the paint where bare metal is showing. MAXON recommends using the aluminum primer touchup paint kit, P/N 908134-01.

### **Semi-annually or 2500 Cycles (whichever occurs first)**

Visually check the platform hinge pins for excessive wear and broken welds. See **PARTS BREAKDOWN** section for replacement parts. Also, do the **Quarterly or 1250 Cycles** maintenance checks.

**MAXON**<sup>®</sup>

11921 Slauson Ave. Santa Fe Springs, CA. 90670 (800) 227-4116 FAX (888) 771-7713

## PERIODIC MAINTENANCE CHECKLIST

**NOTE:** Make sure vehicle is parked on level ground while performing maintenance checks.

### Quarterly or 1250 Cycles (whichever occurs first)

- Check the level and condition of the hydraulic fluid.
- Visually check all hoses and fittings for chafing and fluid leaks. Tighten loose fittings or replace parts as required.
- Check electrical wiring for chafing and make sure wiring connections are tight and free of corrosion. Use dielectric grease to protect electrical connections.
- Check that all **WARNING and instruction decals** are in place. Also, make sure decals are legible, clean, and undamaged.
- Check that all bolts, nuts, and roll pins are in place. Make sure roll pins protrude evenly from both sides of hinge pin collar. Replace fasteners and roll pins if necessary.
- Check for debris and dirt buildup on the slider rollers and rails. Clean out any buildup of dirt and debris.
- Check for rust and oily surfaces on Liftgate. If there is rust or oil on Liftgate or if the Liftgate is dirty, clean it off. Touch up the paint where bare metal is showing. Refer to the paint system **CAUTION** and recommended touchup kit on the preceding page.

### Semi-annually or 2500 Cycles (whichever occurs first)

- Visually check the platform hinge pins for excessive wear and broken welds.
- Do the **Quarterly or 1250 Cycles Checks** on this checklist.

# PERIODIC MAINTENANCE

## CHECKING HYDRAULIC FLUID

### CAUTION

Keep dirt, water and other contaminants from entering the hydraulic system. Before opening the hydraulic fluid reservoir filler cap, drain plug and hydraulic lines, clean up contaminants that can get in the openings. Also, protect the openings from accidental contamination.

**NOTE:** Use correct grade of hydraulic fluid for your location.

**+50 to +120 Degrees F - Grade ISO 32**

**Below + 70 Degrees F - Grade ISO 15 or MIL-H-5606**

See **TABLES 13-1 & 13-2** for recommended brands.

1. Unstow and lower Liftgate to ground.
2. Unlatch and open pump cover (**FIG. 12-1**).
3. Check the hydraulic fluid level in reservoir as follows. With Liftgate on ground, level should be as shown in **FIG. 12-2**.

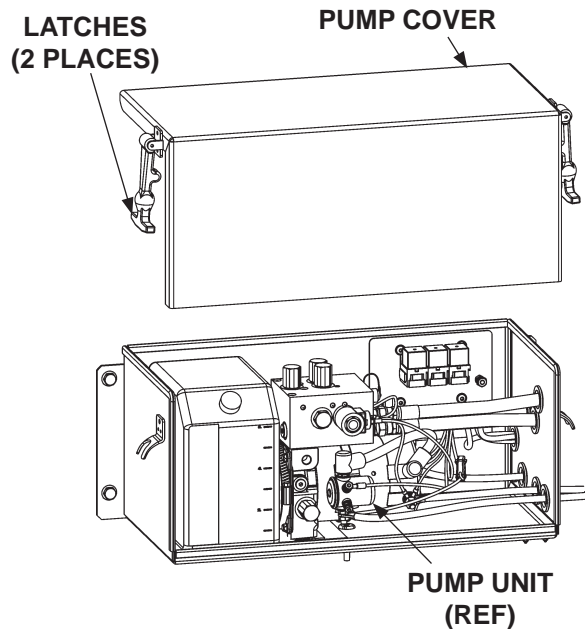
**NOTE:** If the hydraulic fluid in the reservoir is contaminated, do the **CHANGING HYDRAULIC FLUID** procedure in this section.

4. If needed, add fluid to the reservoir as follows. Pull out (no threads) filler cap (**FIG. 12-2**). Fill the reservoir with hydraulic fluid up to 6L mark (**FIG. 12-2**). Reinstall filler cap (**FIG. 12-2**).

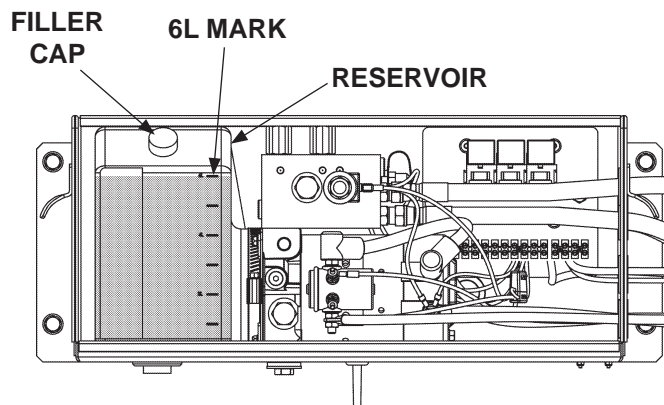
### CAUTION

Pump cover must be correctly secured to prevent it from becoming a hazard. Ensure pump cover is latched to pump box.

5. Close and latch the pump cover as shown in **FIG. 12-1**.



**UNLATCH/LATCH PUMP COVER**  
**FIG. 12-1**



**POWER UNIT FLUID LEVEL**  
**FIG. 12-2**

ISO 32 HYDRAULIC OIL	
RECOMMENDED BRANDS	PART NUMBER
AMSOIL	AWH-05
CHEVRON	HIPERSYN 32
KENDALL	GOLDEN MV
SHELL	TELLUS S2 V32
EXXON	UNIVIS N-32
MOBIL	DTE-13M, DTE-24, HYDRAULIC OIL-13

**TABLE 13-1**

ISO 15 OR MIL-H-5606 HYDRAULIC OIL	
RECOMMENDED BRANDS	PART NUMBER
AMSOIL	AWF-05
CHEVRON	FLUID A, AW-MV-15
KENDALL	GLACIAL BLU
SHELL	TELLUS S2 V15
EXXON	UNIVIS HVI-13
MOBIL	DTE-11M
ROSEMEAD	THS FLUID 17111

**TABLE 13-2**

# PERIODIC MAINTENANCE CHANGING HYDRAULIC FLUID

## CAUTION

Keep dirt, water and other contaminants from entering the hydraulic system. Before opening the hydraulic fluid reservoir filler cap, drain plug and hydraulic lines, clean up contaminants that can get in the openings. Also, protect the openings from accidental contamination.

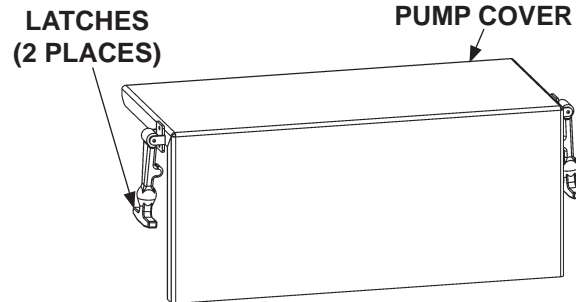
**NOTE:** Use correct grade of hydraulic fluid for your location.

**+50 to +120 Degrees F - Grade ISO 32**

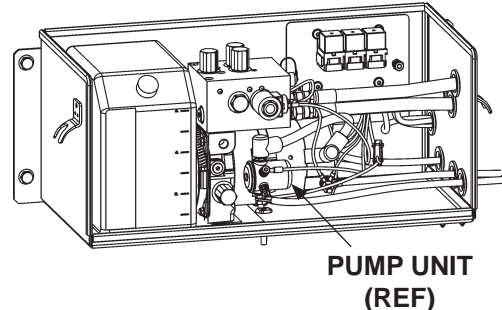
**Below + 70 Degrees F - Grade ISO 15 or MIL-H-5606**

See **TABLES 13-1 & 13-2** for recommended brands.

1. Unstow and lower Liftgate to ground.

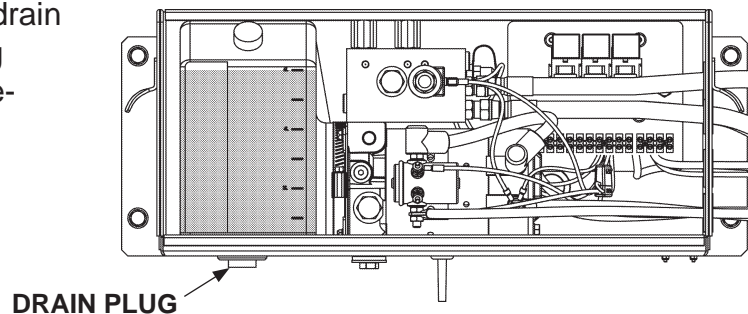


2. Unlatch and open the pump cover (FIG. 14-1).



**UNLATCH PUMP COVER  
FIG. 14-1**

3. Place empty 5 gallon bucket under drain plug (FIG. 14-2). Remove drain plug (FIG. 14-2). Drain hydraulic fluid. Re-install drain plug (FIG. 14-2).

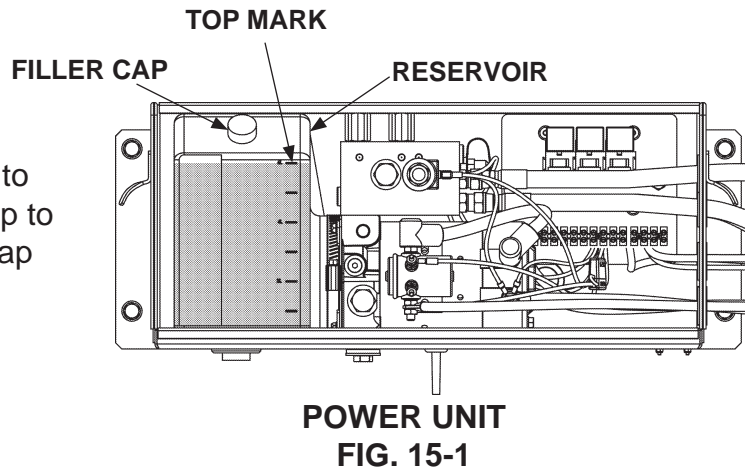


**POWER UNIT  
FIG. 14-2**

**MAXON**

11921 Slauson Ave. Santa Fe Springs, CA. 90670 (800) 227-4116 FAX (888) 771-7713

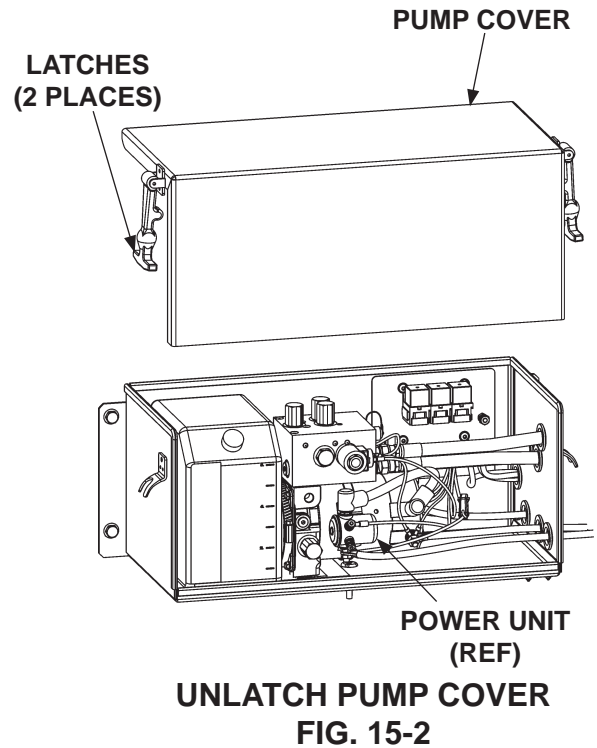
4. Pull out (no threads) filler cap (**FIG. 15-1**). Add 1 gallon of hydraulic fluid to reservoir. Hydraulic fluid should be up to 6L mark (**FIG. 15-1**). Reinstall filler cap (**FIG. 15-1**).



5. Stow the lift and do the **CHECKING HYDRAULIC FLUID** procedure in this section of the manual.

**CAUTION**  
 Pump cover must be correctly secured to prevent it from becoming a hazard. Ensure pump cover is latched to pump box.

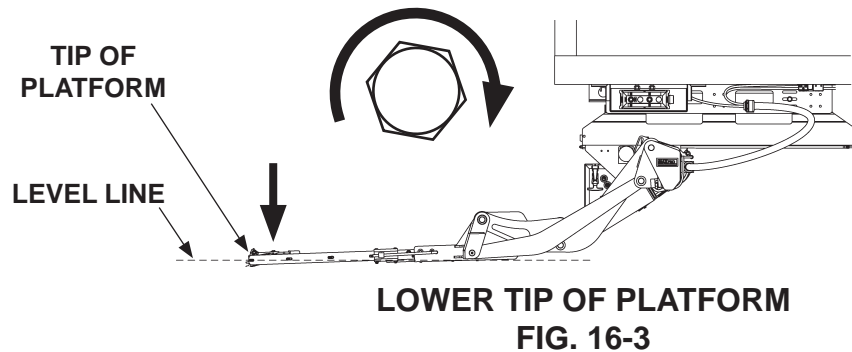
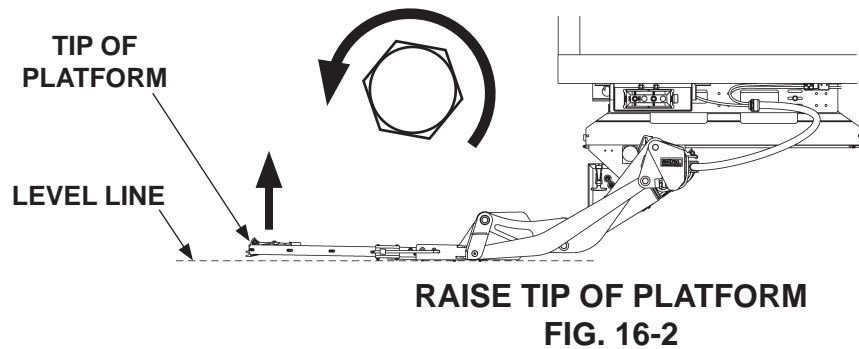
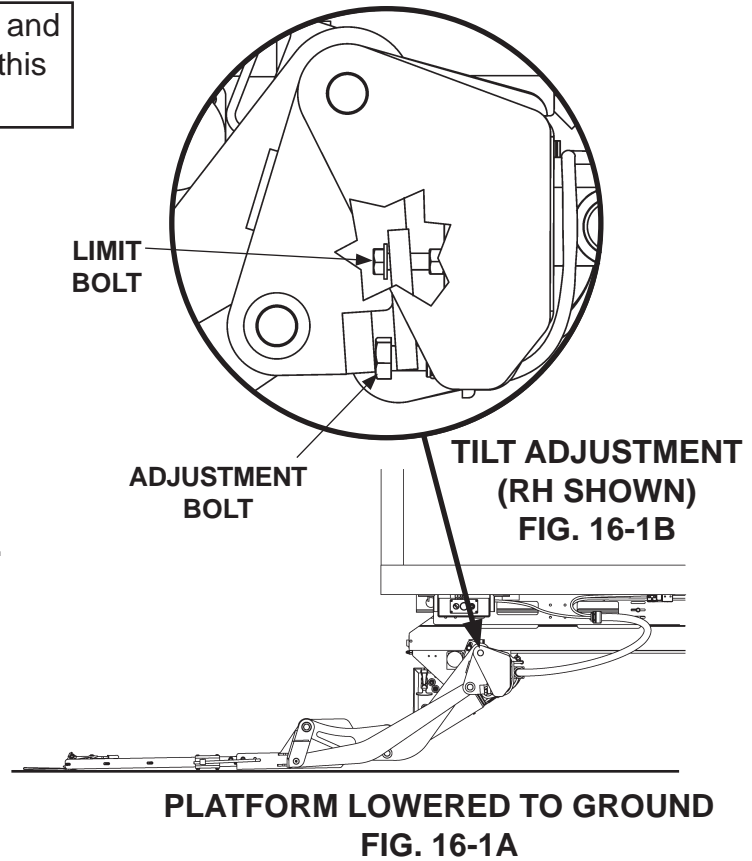
6. Close and latch the pump cover as shown in **FIG. 15-2**.



## PLATFORM ADJUSTMENT

**NOTE:** Park vehicle on level ground and unload vehicle before doing this procedure.

1. Lower platform to ground and unfold flipover (FIG. 16-1A).
2. Loosen adjustment and limit bolts on both sides of platform (FIG. 16-1B).
3. Turn adjustment bolts counterclockwise to tilt the tip of platform up (FIG. 16-2), or turn clockwise to tilt down (FIG. 16-3).
4. Once platform is adjusted, tighten limit bolts securely on both sides of platform (FIG. 16-1B).

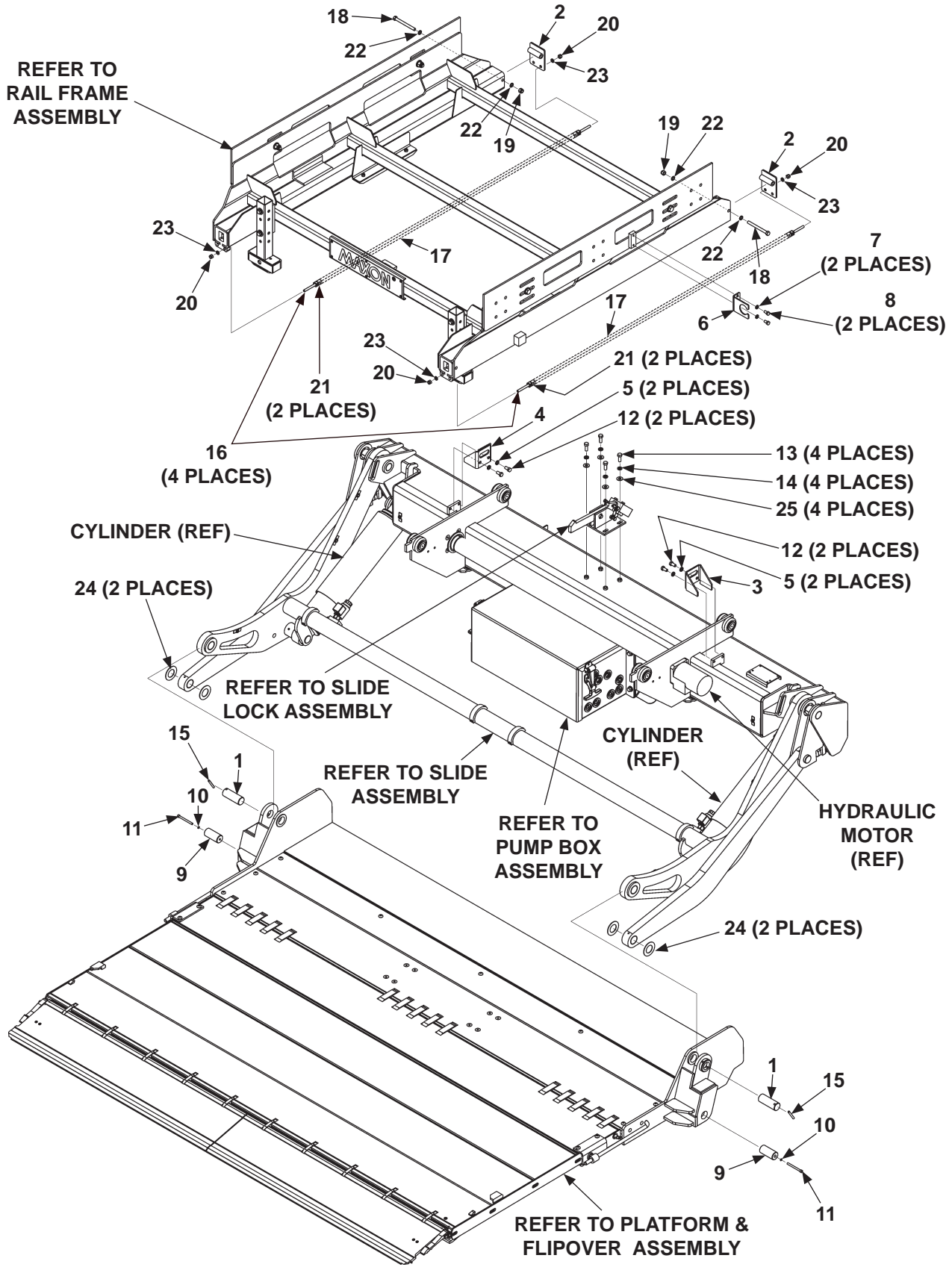




THIS PAGE INTENTIONALLY LEFT BLANK

# PARTS BREAKDOWN MAIN ASSEMBLY

**MAXON**<sup>®</sup>  
11921 Slauson Ave. Santa Fe Springs, CA. 90670 (800) 227-4116 FAX (888) 771-7713

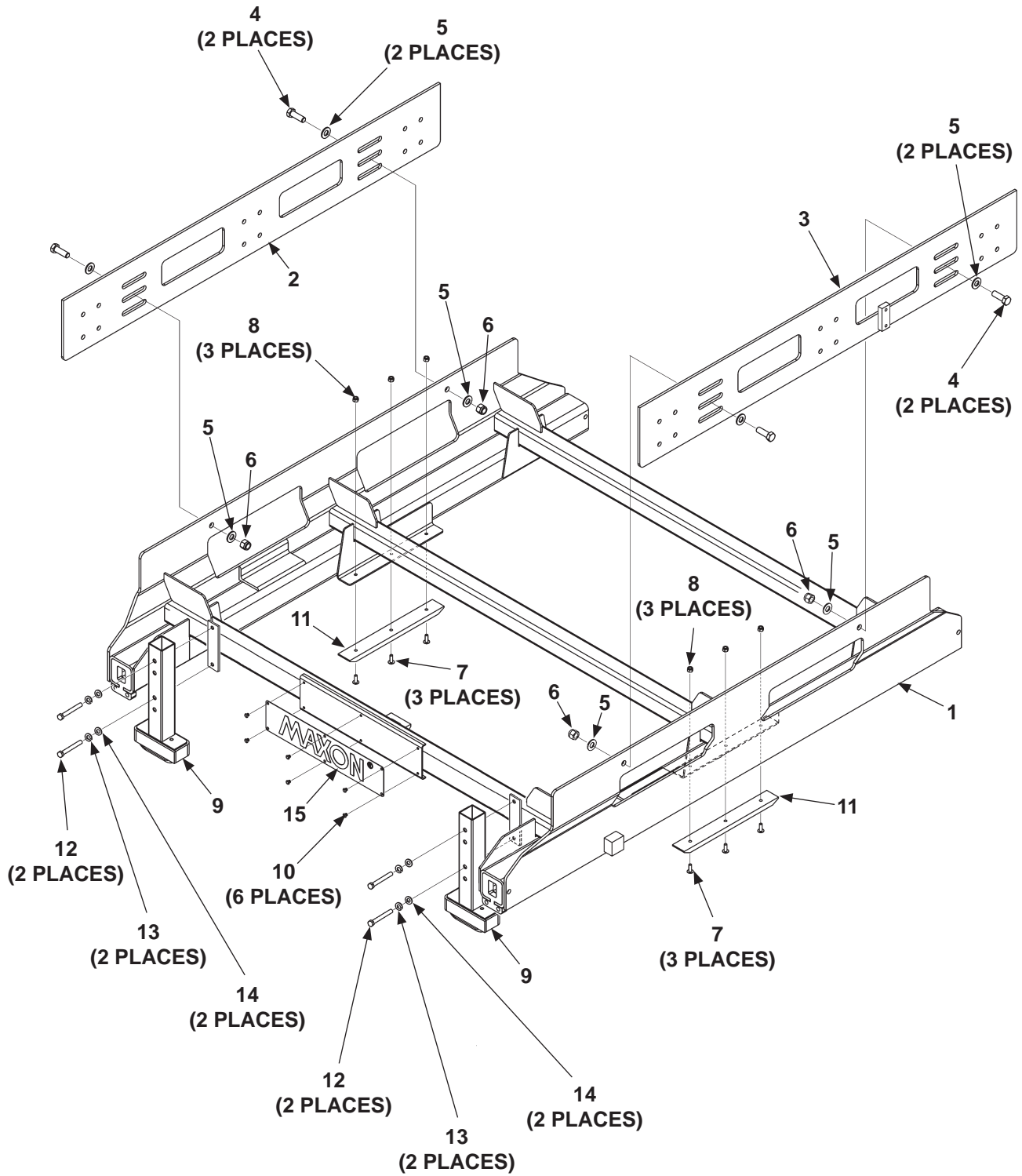


ITEM	QTY.	PART NO.	DESCRIPTION
1	2	RSM0052	DRILLED PIN, 3-13/32" LG.
2	2	RSM0110	FRAME CAP WELDMENT
3	1	283341-01	PROXIMITY SWITCH OUT BRACKET (SMART STOW ONLY)
4	1	283341-02	PROXIMITY SWITCH IN BRACKET (SMART STOW ONLY)
5	4	903435-06	LOCK WASHER, NORD-LOCK, 3/8" (M10) (SMART STOW ONLY)
6	1	268514-01	CONDUIT BRACKET
7	4	902011-3	LOCK WASHER, 5/16"
8	2	900009-1	CAP SCREW, 5/16"-18 X 5/8" LG.
9	2	RSM0051	PIN, 2-11/16" LG.
10	2	903440-01	LOCK WASHER, 1/4"
11	2	900025-11	SOCKET SCREW, 1/4"-20 X 2-3/4" LG.
12	4	900000-3	HEX BOLT, 1/4"-20 X 3/4" GR8 (SMART STOW ONLY)
13	4	900014-4	CAP SCREW, 3/8"-16 X 1" LG.
14	4	902011-4	LOCK WASHER, 3/8"
15	2	905033-5	ROLL PIN, 1/4" X 2" LG.
16	4	RSM0017	CHAIN ADJUSTER
17	2	268262-03	CHAIN, ANSI #50, 85 LINKS
18	2	900014-14	CAP SCREW, 3/8"-16 X 4" LG.
19	2	901002	LOCK NUT, 3/8"-16
20	4	901001	LOCK NUT, 5/16"-18
21	4	268263-01	CONNECTING LINK, ANSI #50
22	4	902000-10	FLAT WASHER, 3/8"
23	4	902000-8	FLAT WASHER, 5/16"
24	4	908078-02	THRUST BEARING, 1-1/4"
25	4	902001-2	FLAT WASHER, 3/8"

# RAIL FRAME ASSEMBLY

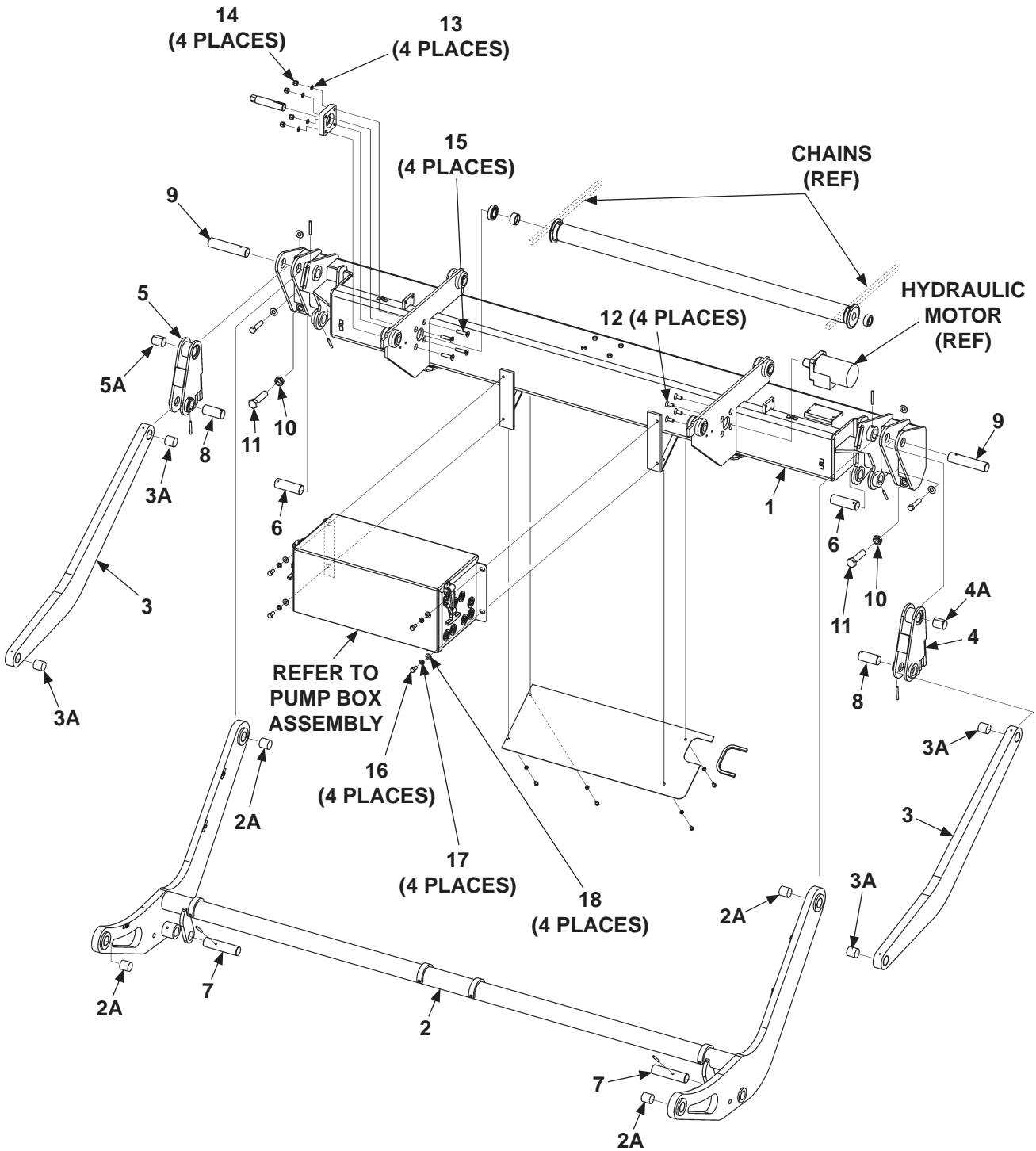
**MAXON®**

11921 Slauson Ave. Santa Fe Springs, CA. 90670 (800) 227-4116 FAX (888) 771-7713



ITEM	QTY.	PART NO.	DESCRIPTION
1	1	268490-01	RAIL FRAME WELDMENT
2	1	268477-01	FRAME MOUNT PLATE, LH
3	1	268518-01	FRAME MOUNT PLATE, RH
4	4	900035-3	CAP SCREW, 1/2"-13 X 1-1/2" LG.
5	8	903443-10	WASHER, 1/2"
6	4	901010	LOCK NUT, 1/2"-13
7	6	900725-03	FLANGE SCREW, 1/2"-20 X 3/4" LG.
8	6	901000	LOCK NUT, 1/4"-20
9	2	268508-02	PARK STOP ASSEMBLY, WITH BUFFER
10	6	207644-01	POP RIVET, 3/16" X .45" DOME
11	2	268492-01	CHAIN GUARD BAR
12	4	900014-10	CAP SCREW, 3/8"-16 X 2-1/2" GR8
13	4	902011-4	LOCK WASHER, 3/8"
14	4	903442-03	FLAT WASHER, 3/8", GR8
15	1	050175	MAXON PLATE

# SLIDE ASSEMBLY



**MAXON®**  
 11921 Slauson Ave. Santa Fe Springs, CA. 90670 (800) 227-4116 FAX (888) 771-7713

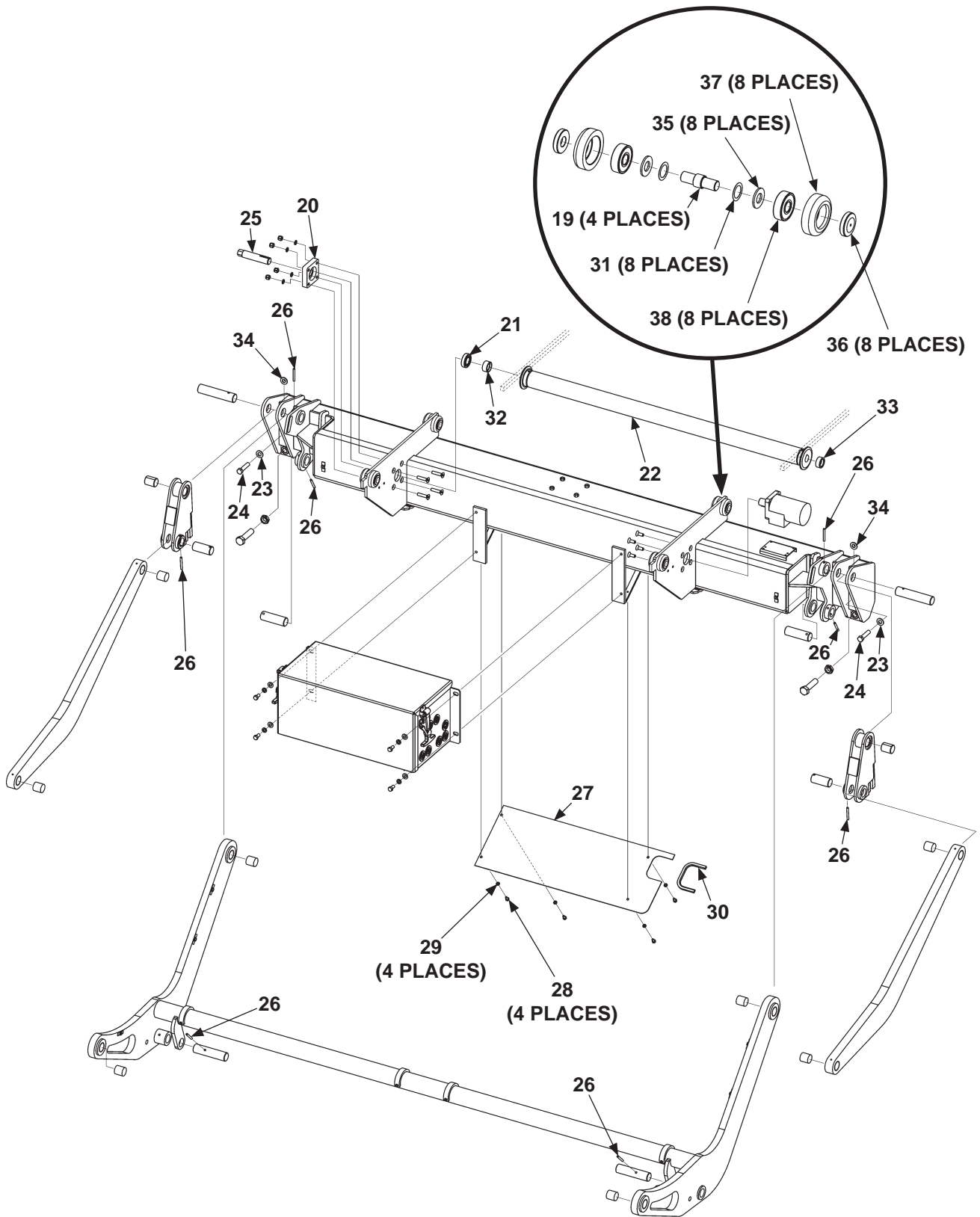
ITEM	QTY.	PART NO.	DESCRIPTION
1	1	RSM0007	BEAM ASSEMBLY
2	1	RSM0005	LIFT ARM ASSEMBLY
2A	4	908046-04	SELF LUBE BEARING, 1-1/4" X 1-3/8" X 1-1/2" LG.
3	2	RSM0006	TILT ARM
3A	2	908046-03	SELF LUBE BEARING, 1-1/4" X 1-3/8" X 1-1/4" LG.
4	1	RSM0060-01	SWING BRACKET, RH
4A	1	908046-04	SELF LUBE BEARING, 1-1/4" X 1-3/8" X 1-1/2" LG.
5	1	RSM0060-02	SWING BRACKET, LH
5A	1	908046-04	SELF LUBE BEARING, 1-1/4" X 1-3/8" X 1-1/2" LG.
6	2	RSM0054	LIFT ARM PIN, 3-15/32" LG.
7	2	RSM0057	LIFT ARM PIN, 5-1/8" LG.
8	2	RSM0055	LIFT ARM PIN, 2-13/16" LG.
9	2	RSM0053	LIFT ARM PIN, 5-3/4" LG.
10	2	251288	THIN LOCK NUT, 3/4"-10
11	2	900032-4	HEX SCREW, 3/4"-10 X 3" LG.
12	4	900040-4	SOCKET SCREW, 3/8"-16 X 1" LG.
13	4	902000-9	FLAT WASHER, 3/8"
14	4	901002	LOCK NUT, 3/8"-16
15	4	900040-7	SOCKET SCREW, 3/8"-16 X 1-3/4" LG.
16	4	900014-3	CAP SCREW, 3/8"-16 X 3/4" LG, GR8
17	4	902011-4	LOCK WASHER, 3/8"
18	4	903443-08	FLAT WASHER, 3/8"

**MAXON**<sup>®</sup> 11921 Slauson Ave. Santa Fe Springs, CA. 90670 (800) 227-4116 FAX (888) 771-7713

# SLIDE ASSEMBLY - Continued

**MAXON**<sup>®</sup>

11921 Slauson Ave. Santa Fe Springs, CA. 90670 (800) 227-4116 FAX (888) 771-7713

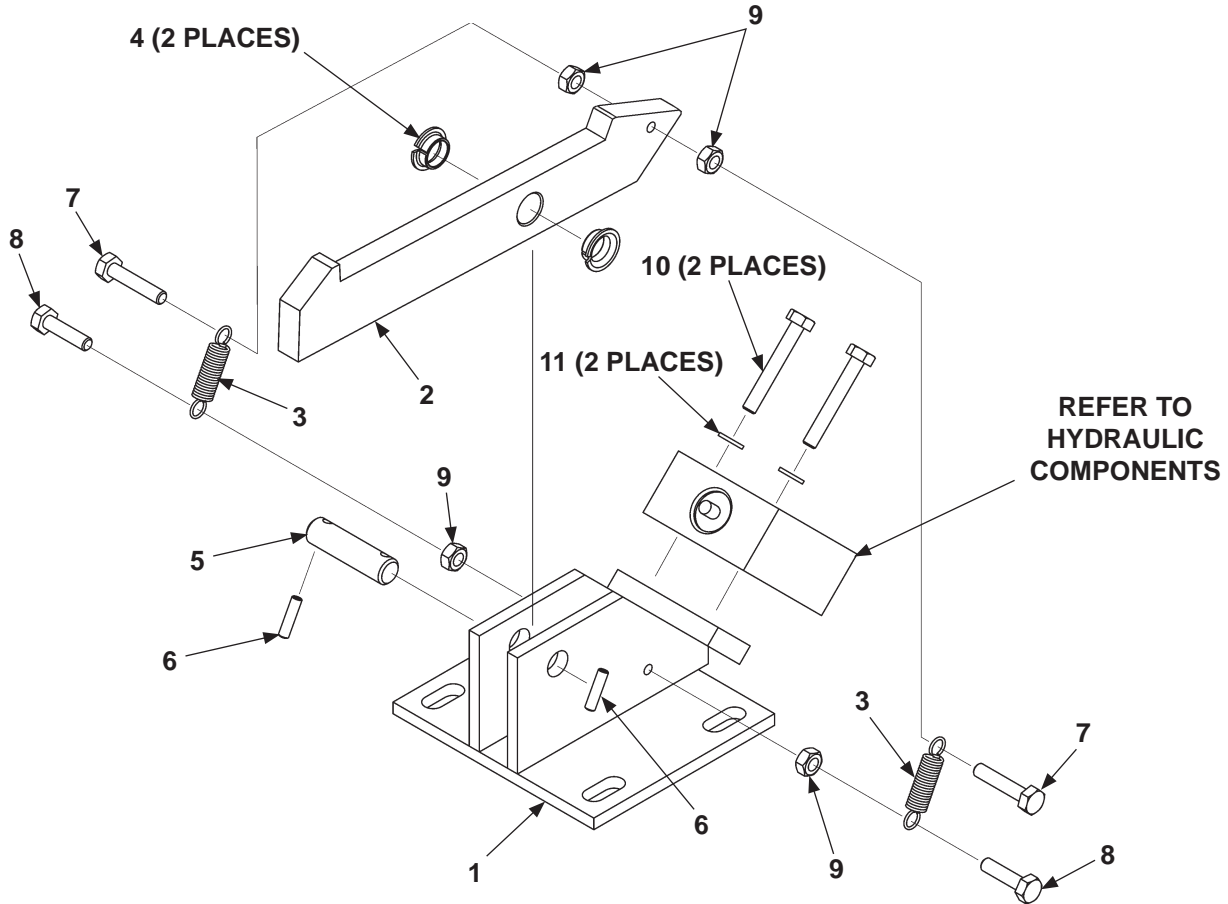




ITEM	QTY.	PART NO.	DESCRIPTION
19	4	268486-01	SHAFT
20	1	RSM0107	BEARING HOUSING
21	1	268265-01	ROLLER BEARING
22	1	RSM0059	SPROCKET ASSEMBLY
23	2	902013-13	FLAT WASHER, 1/2"
24	2	900035-6	CAP SCREW, 1/2"-13 UNC-2A X 2-1/4"
25	1	268294-01	MANUAL DRIVE SHAFT
26	8	905033-5	ROLL PIN, 1/4" X 2" LG.
27	1	268521-01	KICK PANEL PLATE
28	4	900004-1	CAP SCREW, 1/4"-20 X 1/2" LG.
29	4	902011-2	LOCK WASHER, 1/4"
30	1	093209-10	EDGE TRIM
31	8	267592-03	WAVE WASHER, 3/4"
32	1	268561-02	SPOCKET ALGIN BUSHING, LH
33	1	268561-01	SPOCKET ALGIN BUSHING, RH
34	2	908022-06	PLUG
35	8	902013-14	FLAT WASHER, 9/16"
36	8	268557-01	ROLLER INSERT
37	8	202770	HOUSING (BEARING)
38	8	268558-01	BALL BEARING, 15 X 42 X 13 mm

**MAXON**<sup>®</sup> 11921 Slauson Ave. Santa Fe Springs, CA. 90670 (800) 227-4116 FAX (888) 771-7713

# SLIDE LOCK ASSEMBLY

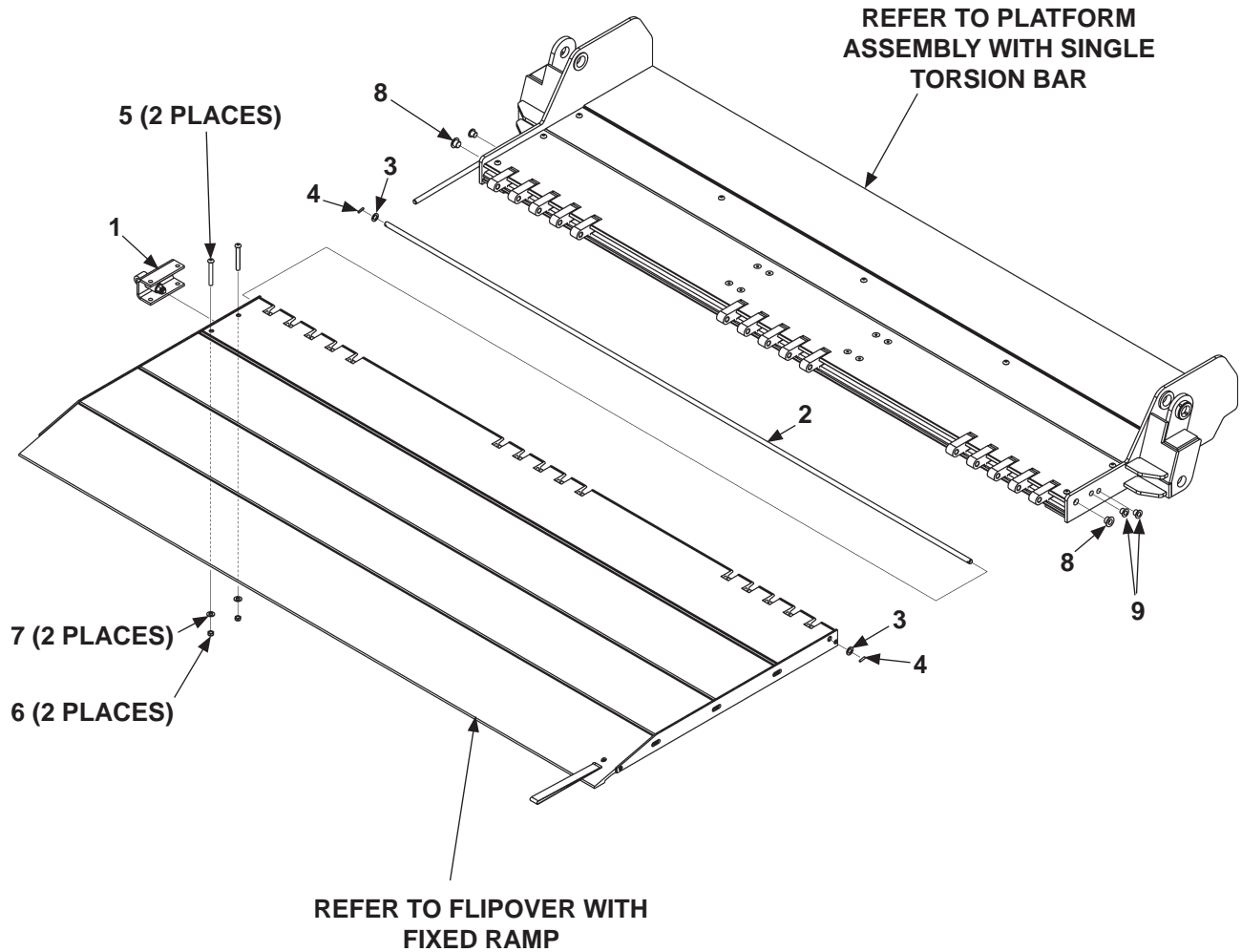


ITEM	QTY.	PART NO.	DESCRIPTION
REF	1	268529-01	SLIDE LOCK ASSEMBLY
1	1	268524-01	SLIDE LOCK BASE WELDMENT
2	1	268527-01	SLIDE LOCK LATCH BRACKET
3	2	268531-01	SLIDE LOCK SPRING
4	2	908062-05	SELF LUBE BEARING, 1/2" X 1/4"
5	1	268532-01	SLIDE LOCK PIN
6	2	905015-1	ROLL PIN, ROLL, 3/16" X 3/4" LG.
7	2	900004-5	SOCKET SCREW, 1/4"-20 X 1-1/4" LG.
8	2	900004-3	CAP SCREW, 1/4"-20 X 1" LG.
9	4	901011-1	NUT, 1/4"-20 UNC-2B
10	2	900004-7	CAP SCREW, 1/4"-20 X 1-3/4" LG.
11	2	902011-2	LOCK WASHER, 1/4"

**MAXON®**

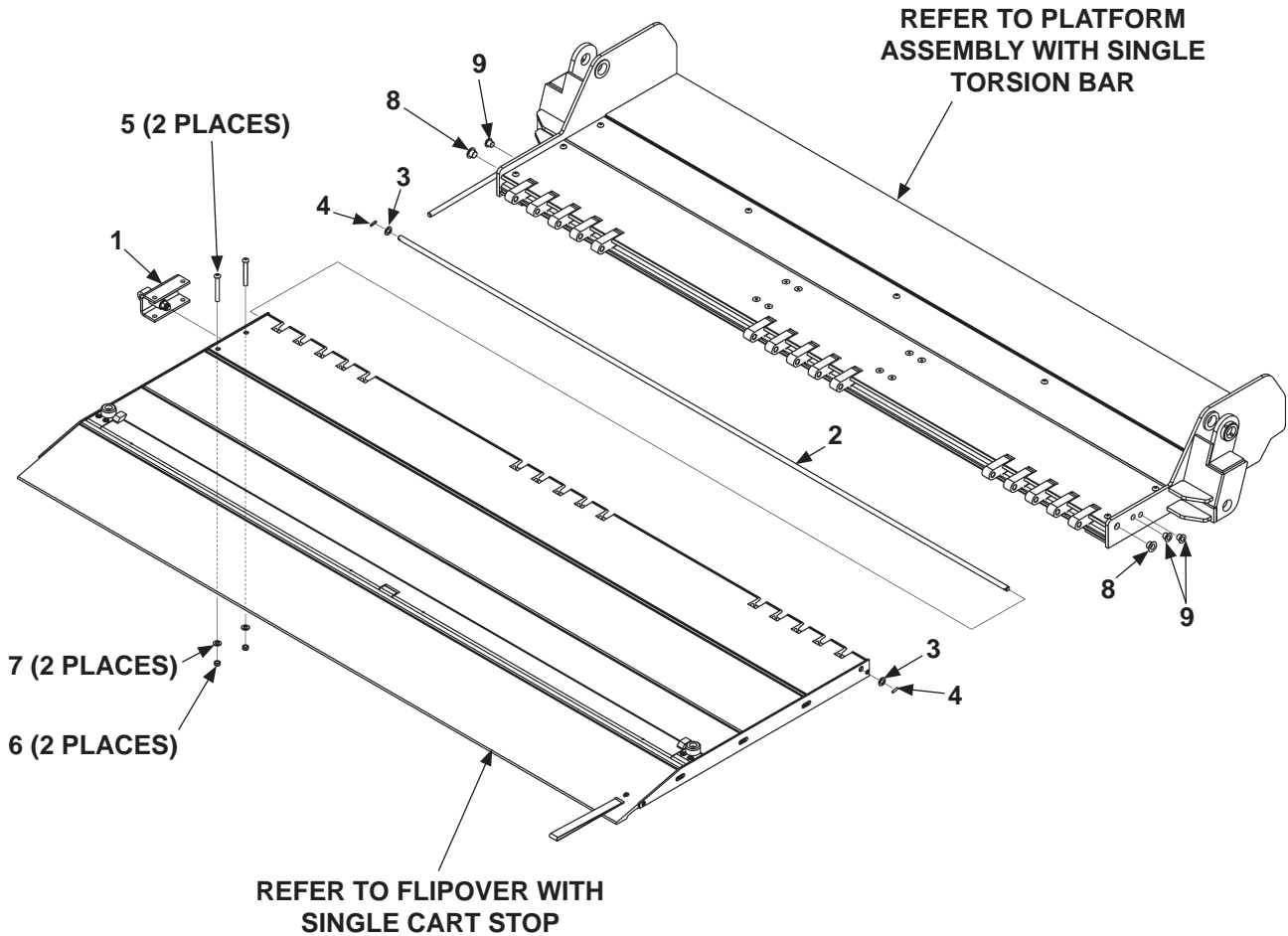
11921 Slauson Ave. Santa Fe Springs, CA. 90670 (800) 227-4116 FAX (888) 771-7713

## PLATFORM & FLIPOVER ASSEMBLY (FIXED RAMP)



ITEM	QTY.	PART NO.	DESCRIPTION
REF	1	268505-09	PLATFORM (& FLIPOVER) ASSY, WITH FIXED RAMP
1	1	268392-01	TORSION BAR BRACKET
2	1	263456-13	HINGE ROD, 1/2" X 86-3/8" LG.
3	2	902000-13	FLAT WASHER, 1/2"
4	2	905015-1	ROLL PIN, 3/16" X 3/4"
5	2	900064-07	BUTTON HEAD SCREW, 3/8"-16 X 3" LG.
6	2	901016-4	THIN LOCK NUT, 3/8"-16
7	2	902013-11	FLAT WASHER, 3/8"
8	2	908022-06	FLEXIBLE PLUG
9	3	908022-05	FLEXIBLE PLUG

## PLATFORM & FLIPOVER ASSEMBLY (SINGLE CART STOP)

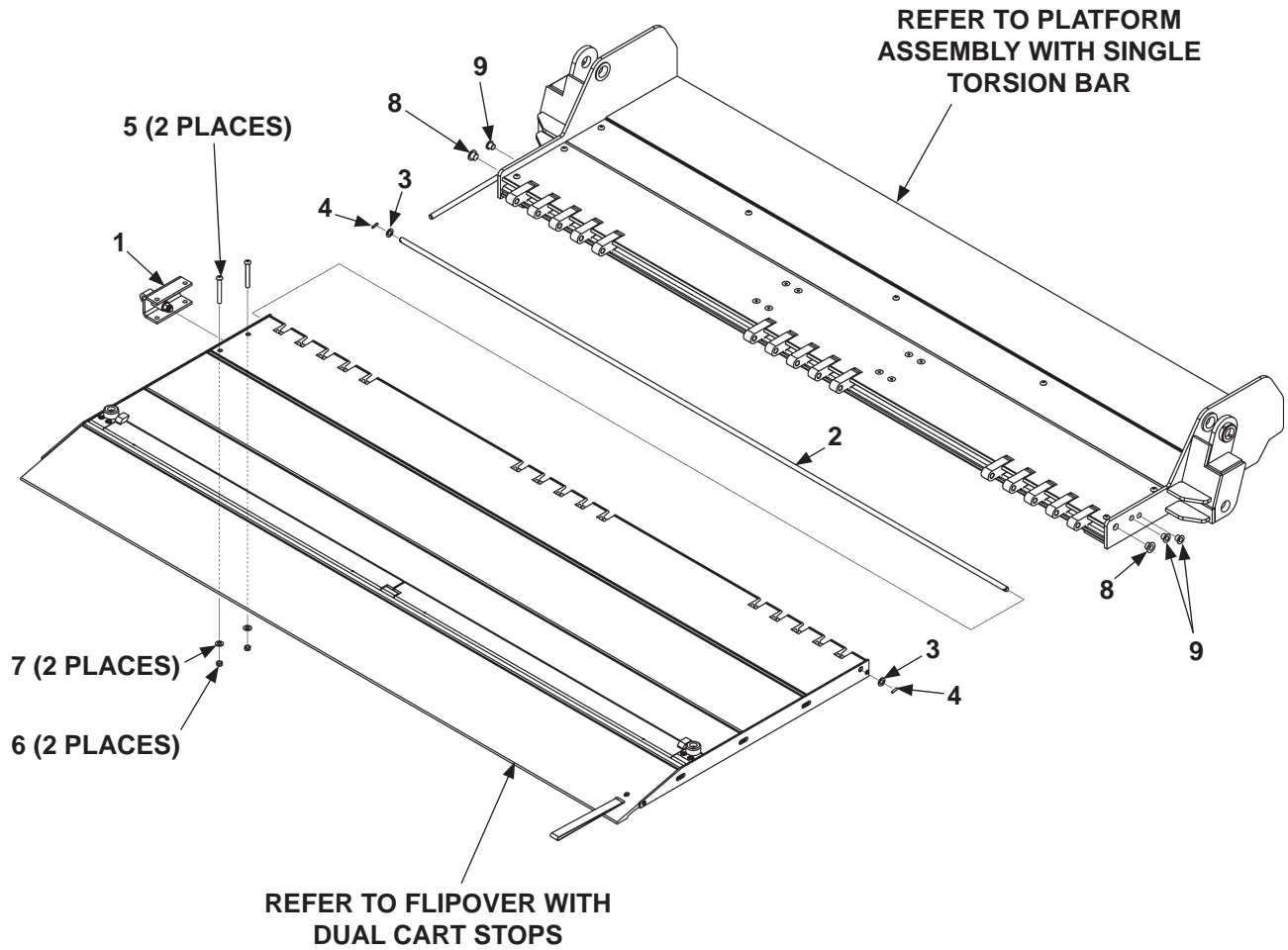


ITEM	QTY.	PART NO.	DESCRIPTION
REF	1	268505-10	PLATFORM (& FLIPOVER) ASSY, WITH FIXED RAMP & SINGLE CART STOP
1	1	268392-01	TORSION BAR BRACKET
2	1	263456-13	HINGE ROD, 1/2" X 86-3/8" LG.
3	2	902000-13	FLAT WASHER, 1/2"
4	2	905015-1	ROLL PIN, 3/16" X 3/4"
5	2	900064-07	BUTTON HEAD SCREW, 3/8"-16 X 3" LG.
6	2	901016-4	THIN LOCK NUT, 3/8"-16
7	2	902013-11	FLAT WASHER, 3/8"
8	2	908022-06	FLEXIBLE PLUG
9	3	908022-05	FLEXIBLE PLUG

**MAXON®**

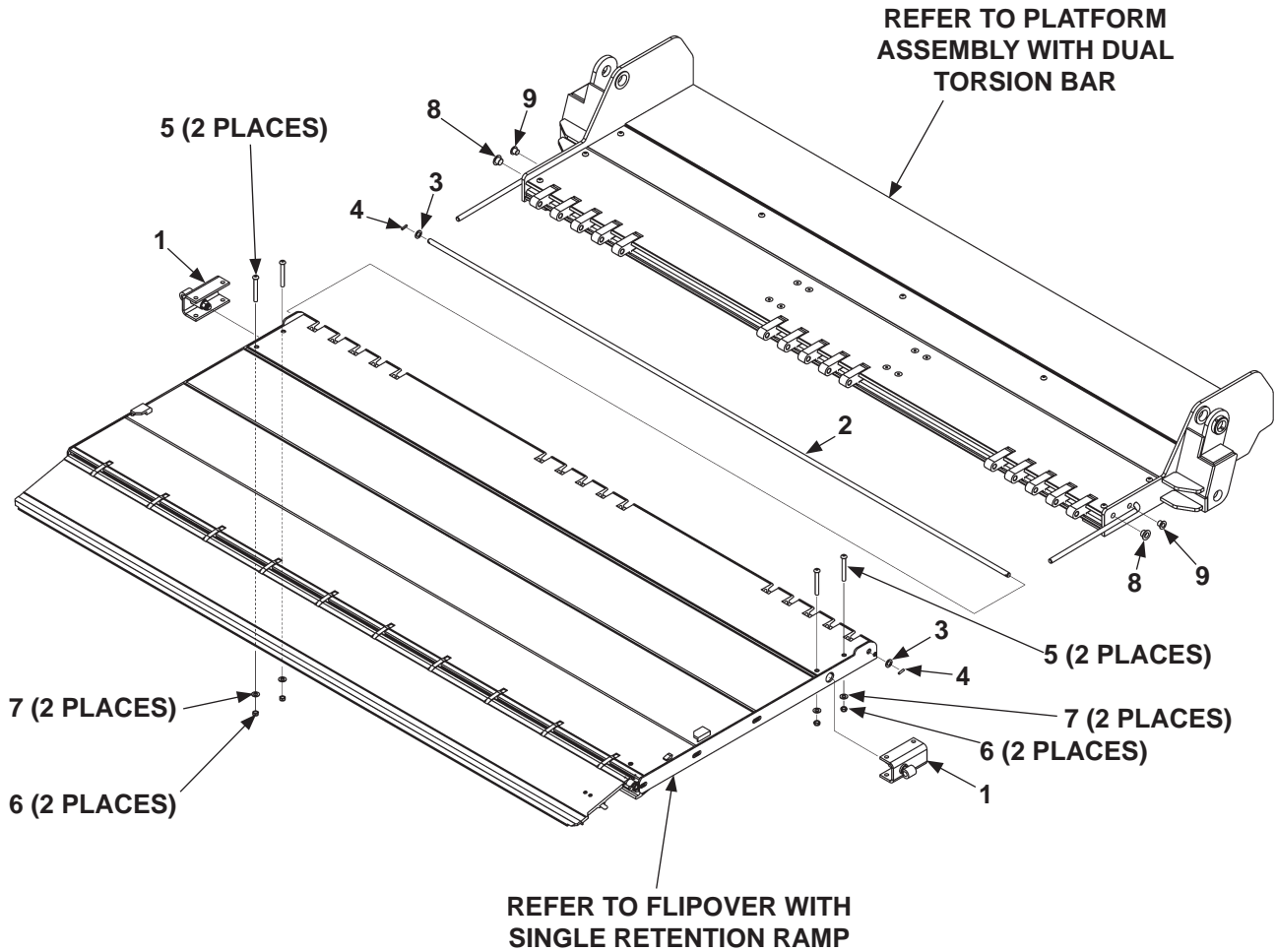
11921 Slauson Ave. Santa Fe Springs, CA. 90670 (800) 227-4116 FAX (888) 771-7713

## PLATFORM & FLIPOVER ASSEMBLY (DUAL CART STOP)



ITEM	QTY.	PART NO.	DESCRIPTION
REF	1	268505-11	PLATFORM (& FLIPOVER) ASSY, WITH FIXED RAMP & DUAL CART STOPS
1	1	268392-01	TORSION BAR BRACKET
2	1	263456-13	HINGE ROD, 1/2" X 86-3/8" LG.
3	2	902000-13	FLAT WASHER, 1/2"
4	2	905015-1	ROLL PIN, 3/16" X 3/4"
5	2	900064-07	BUTTON HEAD SCREW, 3/8"-16 X 3" LG.
6	2	901016-4	THIN LOCK NUT, 3/8"-16
7	2	902013-11	FLAT WASHER, 3/8"
8	2	908022-06	FLEXIBLE PLUG
9	3	908022-05	FLEXIBLE PLUG

## PLATFORM & FLIPOVER ASSEMBLY (SINGLE RETENTION RAMP)

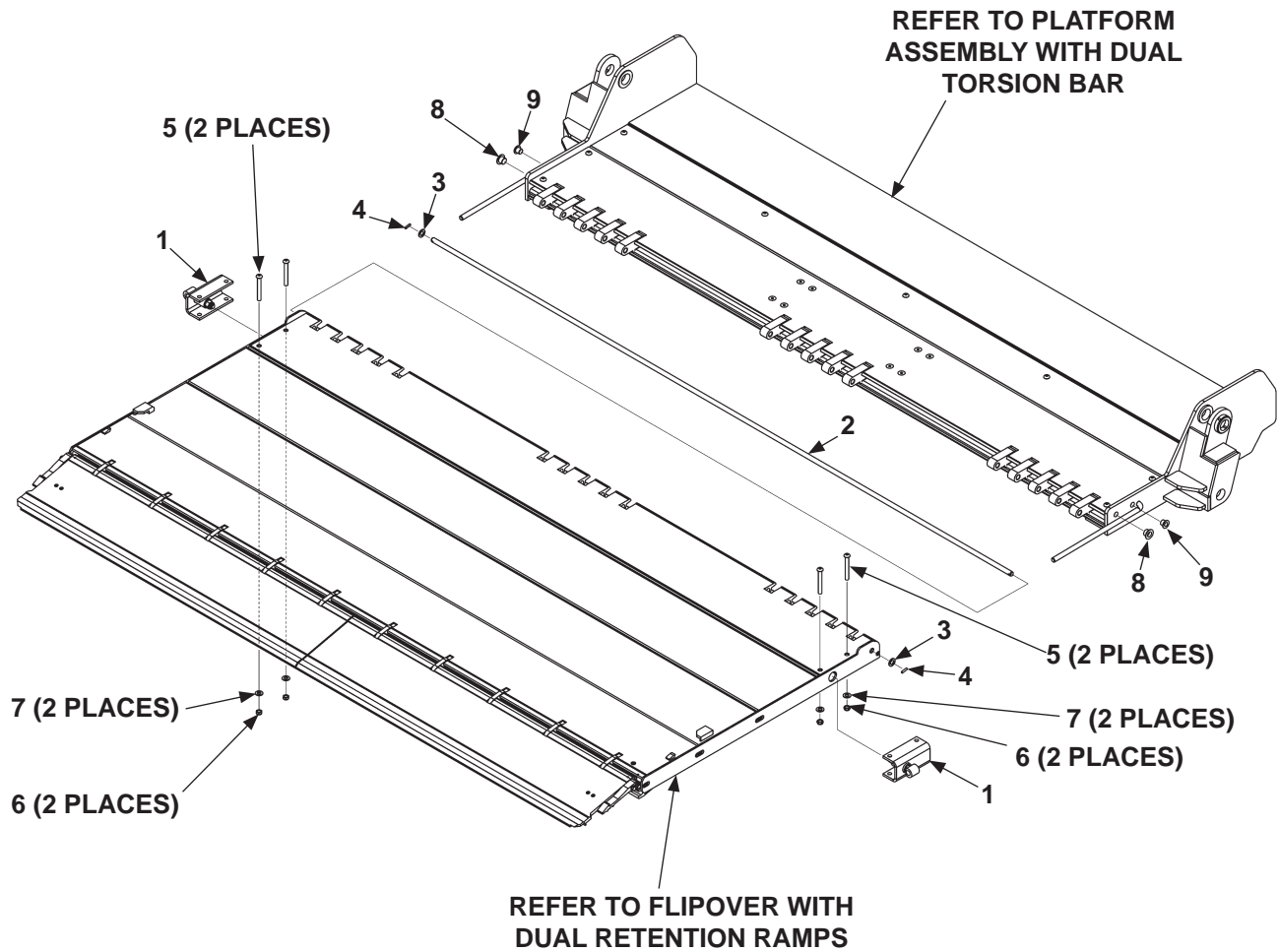


ITEM	QTY.	PART NO.	DESCRIPTION
REF	1	268505-08	PLATFORM (& FLIPOVER) ASSY, WITH SINGLE RETENTION RAMP
1	2	268392-01	TORSION BAR BRACKET
2	1	263456-13	HINGE ROD, 1/2" X 86-3/8" LG.
3	2	902000-13	FLAT WASHER, 1/2"
4	2	905015-1	ROLL PIN, 3/16" X 3/4"
5	4	900064-07	BUTTON HEAD SCREW, 3/8"-16 X 3" LG.
6	4	901016-4	THIN LOCK NUT, 3/8"-16
7	4	902013-11	FLAT WASHER, 3/8"
8	2	908022-06	FLEXIBLE PLUG
9	2	908022-05	FLEXIBLE PLUG

**MAXON®**

11921 Slauson Ave. Santa Fe Springs, CA. 90670 (800) 227-4116 FAX (888) 771-7713

## PLATFORM & FLIPOVER ASSEMBLY (DUAL RETENTION RAMPS)

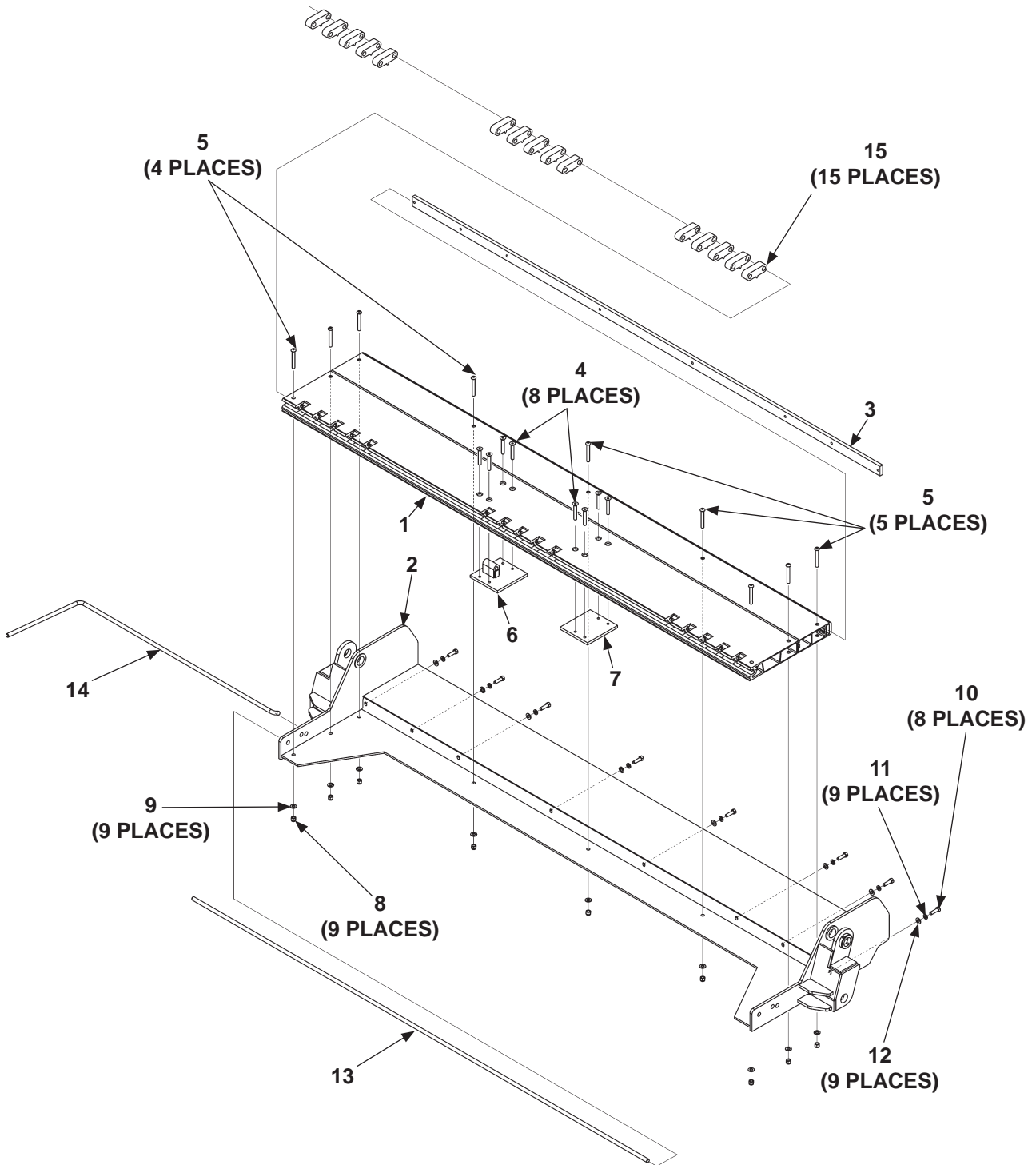


ITEM	QTY.	PART NO.	DESCRIPTION
REF	1	268505-07	PLATFORM (& FLIPOVER) ASSY, WITH DUAL RETENTION RAMP
1	2	268392-01	TORSION BAR BRACKET
2	1	263456-13	HINGE ROD, 1/2" X 86-3/8" LG.
3	2	902000-13	FLAT WASHER, 1/2"
4	2	905015-1	ROLL PIN, 3/16" X 3/4" LG.
5	4	900064-07	BUTTON HEAD SCREW, 3/8"-16 X 3" LG.
6	4	901016-4	THIN LOCK NUT, 3/8"-16
7	4	902013-11	FLAT WASHER, 3/8"
8	2	908022-06	FLEXIBLE PLUG
9	2	908022-05	FLEXIBLE PLUG

# PLATFORM ASSEMBLY WITH SINGLE TORSION BAR

**MAXON®**

11921 Slauson Ave. Santa Fe Springs, CA. 90670 (800) 227-4116 FAX (888) 771-7713



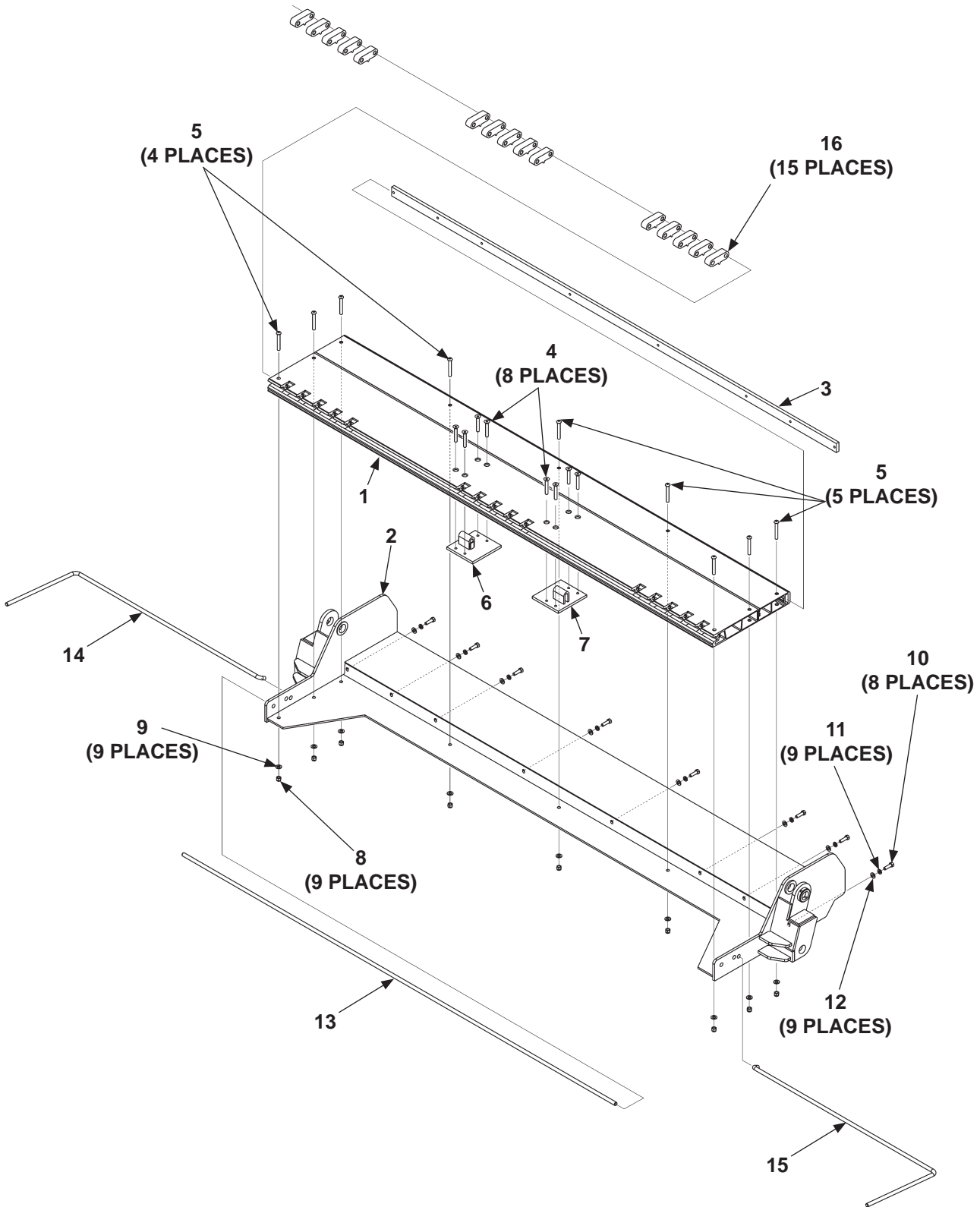


ITEM	QTY	PART NO.	DESCRIPTION
REF	1	268575-03	PLATFORM ASSEMBLY
1	1	268566-01	PLANK WELDMENT, 25" HEEL
2	1	268570-01	PLATFORM WELDMENT, 25" HEEL
3	1	268572-01	TAPPING STRIP FLAT
4	8	900040-10	SOCKET SCREW, 3/8"-16 X 2-1/2" LG.
5	9	900064-12	BUTTON HEAD SCREW, 3/8"-16 X 2-3/4" LG.
6	1	268560-01	TORSION BAR HOLDER, LH
7	1	268559-01	FLAT, 3/8" X 5" X 5-1/2" LG.
8	9	901002	LOCK NUT, 3/8"-16
9	9	902001-2	FLAT WASHER, 3/8" X 1/16"
10	8	900035-2	CAP SCREW, 1/2"-13 X 1-1/4" LG.
11	8	902011-6	LOCK WASHER, 1/2"
12	8	902013-13	FLAT WASHER, 1/2"
13	1	268578-01	HINGE ROD, 1/2" X 83-1/2" LG.
14	1	268394-01	TORSION BAR, LH
15	15	281010-01	HINGE

# PLATFORM ASSEMBLY WITH DUAL TORSION BAR

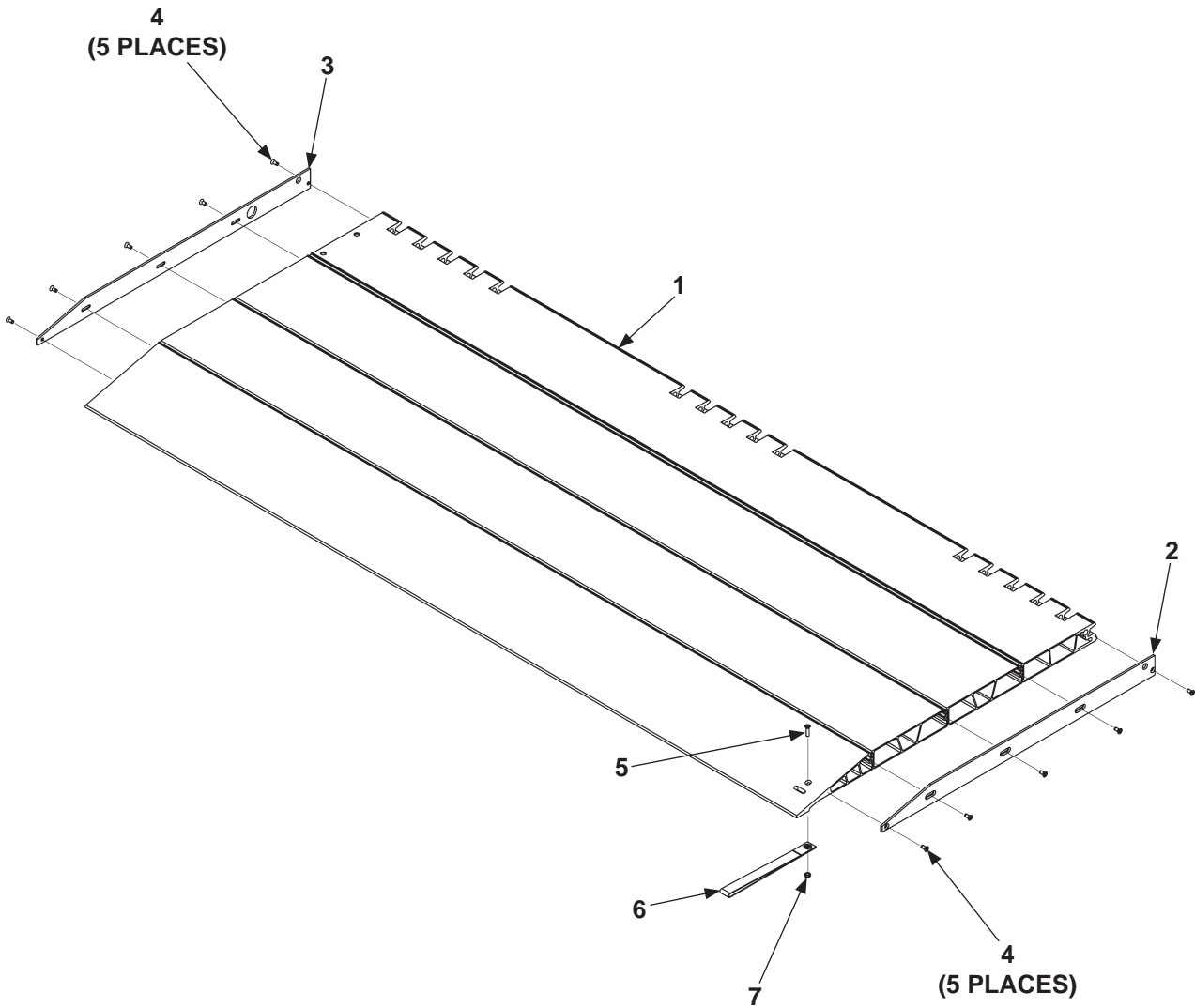
**MAXON®**

11921 Slauson Ave. Santa Fe Springs, CA. 90670 (800) 227-4116 FAX (888) 771-7713



ITEM	QTY	PART NO.	DESCRIPTION
REF	1	268575-01	PLATFORM ASSEMBLY
1	1	268566-01	PLANK WELDMENT, 25" HEEL
2	1	268570-01	PLATFORM WELDMENT, 25" HEEL
3	1	268572-01	TAPPING STRIP FLAT
4	8	900040-10	SOCKET SCREW, 3/8"-16 X 2-1/2" LG.
5	9	900064-12	BUTTONHEAD SCREW, 3/8"-16 X 2-3/4" LG.
6	1	268560-01	TORSION BAR HOLDER, LH
7	1	268560-02	TORSION BAR HOLDER, RH
8	9	901002	LOCK NUT, 3/8"-16
9	9	902001-2	FLAT WASHER, 3/8" X 1/16"
10	8	900035-2	CAP SCREW, 1/2"-13 X 1-1/4" LG.
11	8	902011-6	LOCK WASHER, 1/2"
12	8	902013-13	FLAT WASHER, 1/2"
13	1	268578-01	HINGE ROD, 1/2" X 83-1/2" LG.
14	1	268394-01	TORSION BAR, LH
15	1	268394-02	TORSION BAR, RH
16	15	281010-01	HINGE

# FLIPOVER WITH FIXED RAMP



**MAXON**<sup>®</sup>

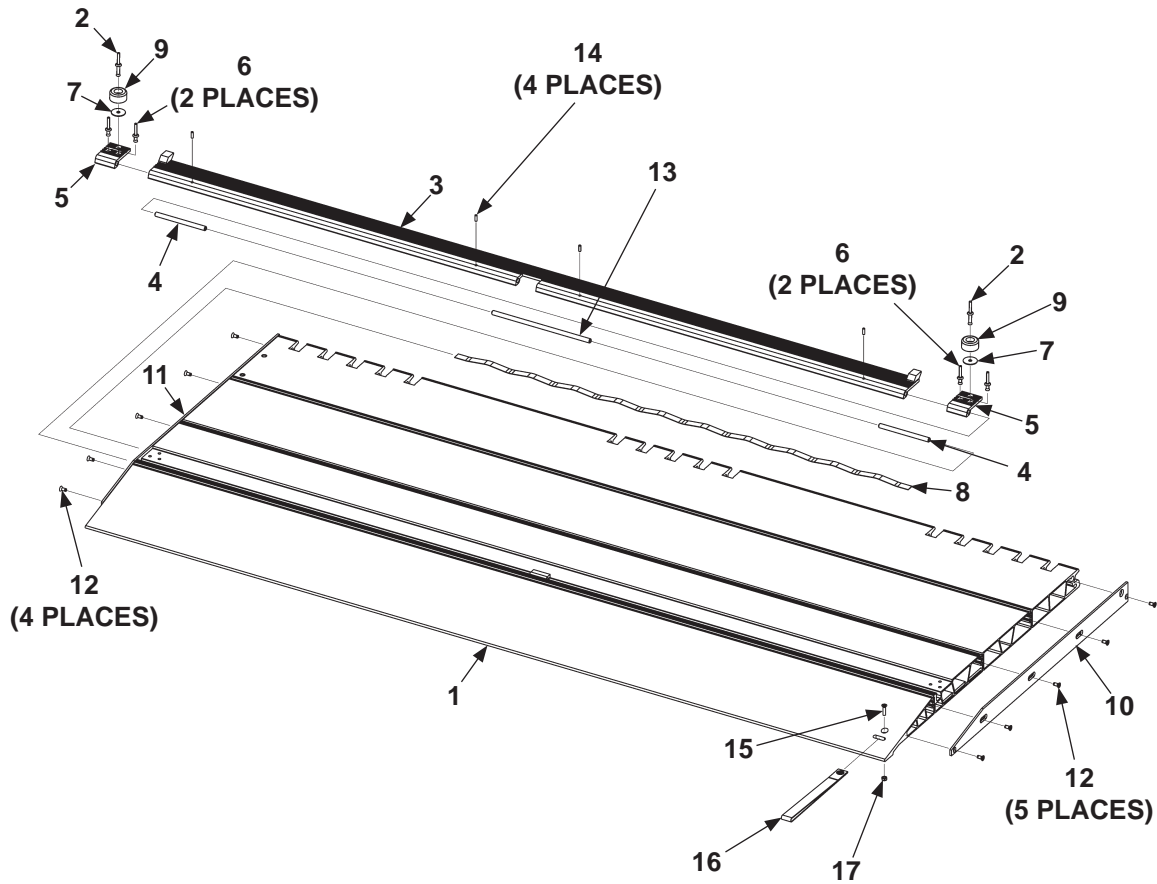
11921 Slauson Ave. Santa Fe Springs, CA. 90670 (800) 227-4116 FAX (888) 771-7713

ITEM	QTY	PART NO.	DESCRIPTION
REF	1	268499-07	FLIPOVER ASSEMBLY
1	1	268498-05	FLIPOVER WELDMENT
2	1	268753-01	SIDE PLATE, RH
3	1	268753-02	SIDE PLATE, LH
4	10	900748-03	PAN HEAD SCREW, 1/4"-20 X 5/8" LG.
5	1	900715-08	PAN HEAD SCREW, 1/4"-20 X 1" LG.
6	1	908095-02	HANDLE-STRAP W/GROMMET 9-1/2" LG.
7	1	901016-2	THIN LOCKING NUT, 1/4"-20

# FLIPOVER WITH SINGLE CART STOP

**MAXON®**

11921 Slauson Ave. Santa Fe Springs, CA. 90670 (800) 227-4116 FAX (888) 771-7713

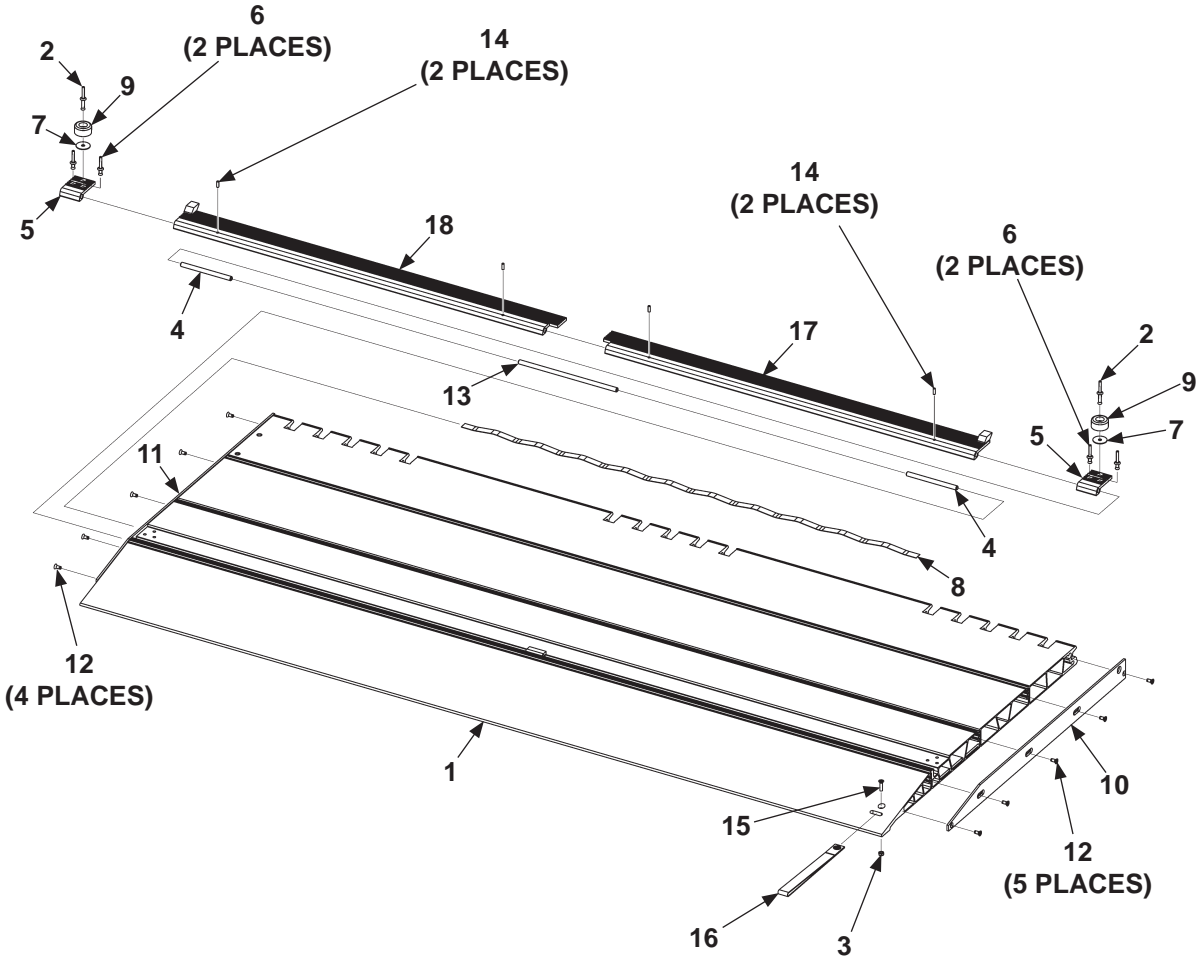


ITEM	QTY.	PART NO.	DESCRIPTION
REF	1	268760-02	FLIPOVER ASSEMBLY, 85-3/8" (WIDE)
1	1	268498-06	FLIPOVER WELDMENT, 85" (WIDE)
2	2	903705-06	RIVET, BLIND, 1/4" X 1-7/32" LG.
3	1	267092-09	CART STOP WELDMENT, 85" (WIDE)
4	2	267094-03	PIN, 5" LG.
5	2	267088-01	CART STOP LINK
6	4	903705-02	RIVET, BLIND, 1/4" X 5/8" LG.
7	2	903409-07	FENDER WASHER, 9/32" X 1-1/4" O.D.
8	1	267581-01	SPRING, FLIPOVER, 42" LG.
9	2	905314-05	BUMPER
10	1	268753-01	SIDE PLATE, FLIPOVER RH
11	1	268753-02	SIDE PLATE, FLIPOVER LH
12	10	900748-03	SELF-TAPPING SCREW, 1/4"-20 X 5/8" LG.
13	1	267094-04	PIN, 9-3/4" LG.
14	4	904719-03	ROLL PIN, 3/16" X 9/16" LG.
15	1	900715-08	PAN HEAD SCREW, 1/4"-20 X 1" LG.
16	1	908095-02	HANDLE-STRAP W/GROMMET 9-1/2" LG.
17	1	901016-2	THIN LOCKING NUT, 1/4"-20

# FLIPOVER WITH DUAL CART STOPS

**MAXON**<sup>®</sup>

11921 Slauson Ave. Santa Fe Springs, CA. 90670 (800) 227-4116 FAX (888) 771-7713



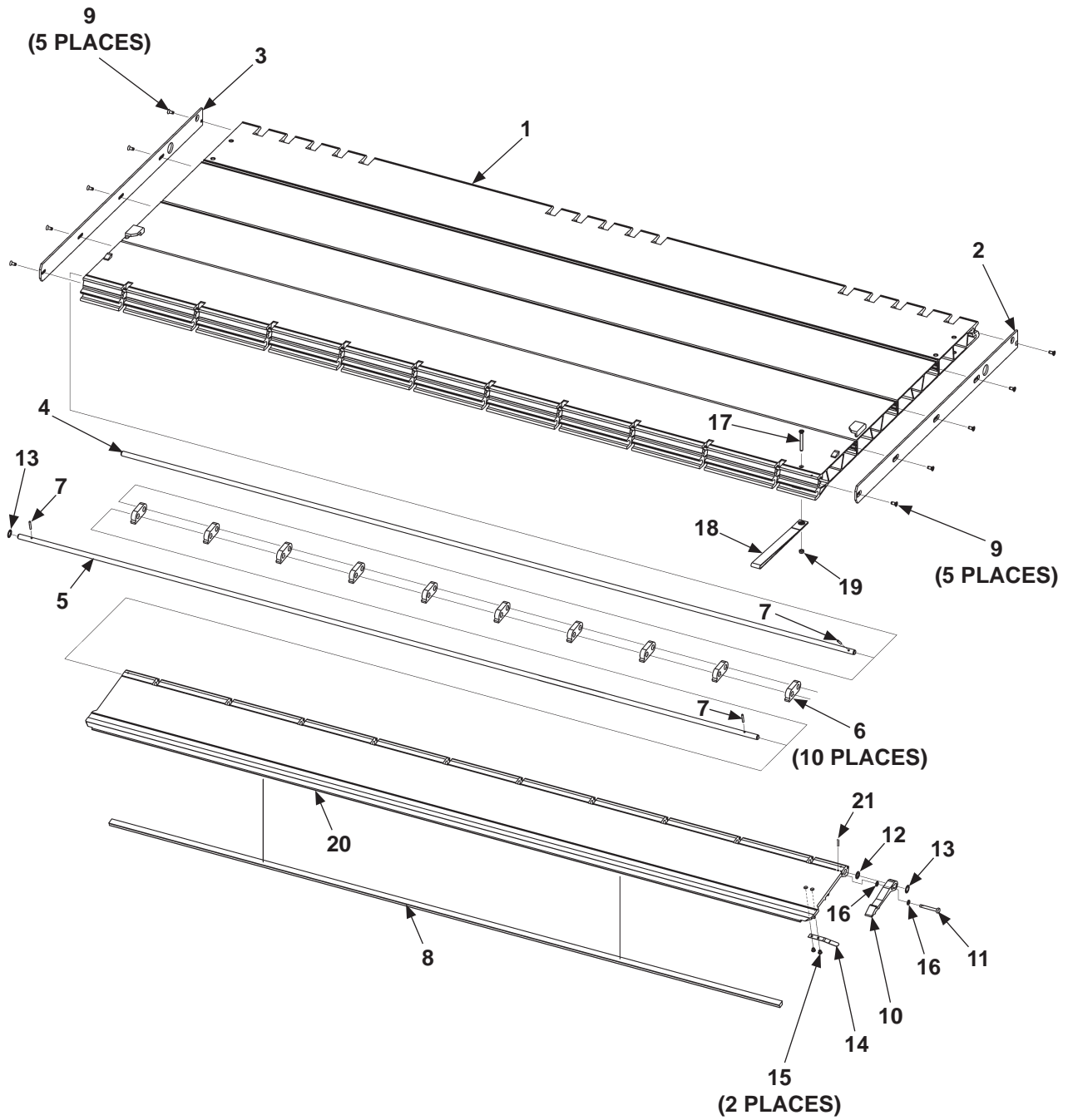


ITEM	QTY.	PART NO.	DESCRIPTION
REF	1	268760-01	FLIPOVER ASSEMBLY, 85-3/8" (WIDE)
1	1	268498-06	FLIPOVER WELDMENT, 85" (WIDE)
2	2	903705-06	RIVET, BLIND, 1/4" X 1-7/32" LG.
3	1	901016-2	THIN LOCKING NUT, 1/4"-20
4	2	267094-03	PIN, 5" LG.
5	2	267088-01	CART STOP LINK
6	4	903705-02	RIVET, BLIND, 1/4" X 5/8" LG.
7	2	903409-07	FENDER WASHER, 9/32" X 1-1/4" O.D.
8	1	267581-01	SPRING, FLIPOVER, 42" LG.
9	2	905314-05	BUMPER
10	1	268753-01	SIDE PLATE, FLIPOVER RH
11	1	268753-02	SIDE PLATE, FLIPOVER LH
12	10	900748-03	SELF-TAPPING SCREW, 1/4"-20 X 5/8" LG.
13	1	267094-04	PIN, 9-3/4" LG.
14	4	904719-03	ROLL PIN, 3/16" X 9/16" LG.
15	1	900715-08	PAN HEAD SCREW, 1/4"-20 X 1" LG.
16	1	908095-02	HANDLE-STRAP W/GROMMET 9-1/2" LG.
17	1	267092-06	CART STOP WELDMENT RH, 40-11/32" (WIDE)
18	1	267092-07	CART STOP WELDMENT LH, 40-11/32" (WIDE)

# FLIPOVER WITH SINGLE RETENTION RAMP

**MAXON®**

11921 Slauson Ave. Santa Fe Springs, CA. 90670 (800) 227-4116 FAX (888) 771-7713



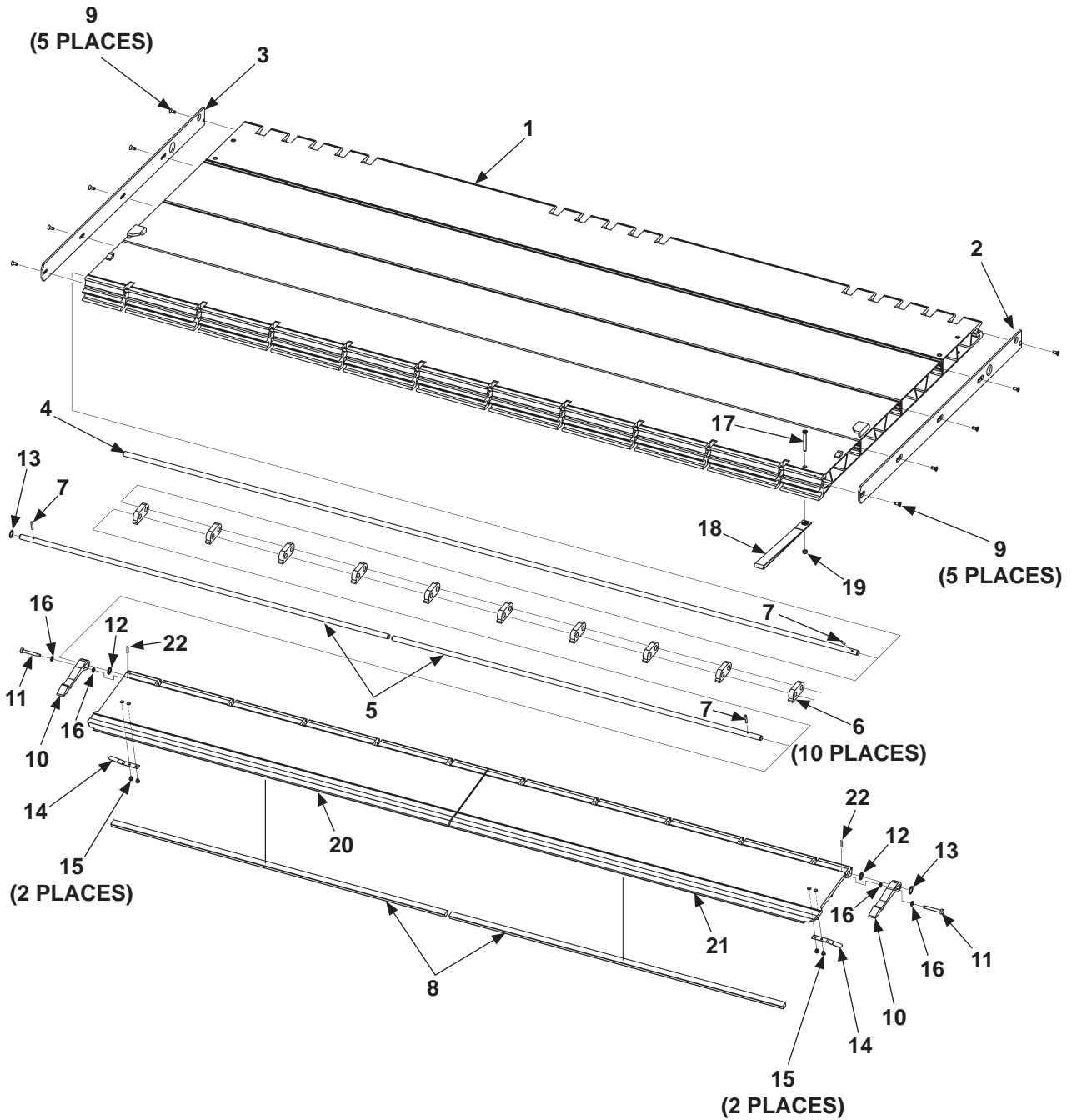
ITEM	QTY	PART NO.	DESCRIPTION
REF	1	268499-05	FLIPOVER ASSEMBLY
1	1	268498-04	FLIPOVER WELDMENT
2	1	268752-01	SIDE PLATE, RH
3	1	268752-02	SIDE PLATE, LH
4	1	267045-04	HINGE ROD, 1/2" X 84-3/4" LG.
5	1	267045-03	HINGE ROD, 1/2" X 84-9/16" LG.
6	10	311022-10	HINGE, 1/2" LG.
7	2	905007-07	ROLL PIN, 5/32" X 1" LG.
8	1	905318-02	EXTRUSION BUMPER
9	10	900748-03	PAN HEAD SCREW, 1/4"-20 X 5/8" LG.
10	1	311038-11	RETENTION RAMP HOOK
11	1	283951-01	CLEVIS PIN, 1/4" O.D.
12	1	903413-02	WASHER, 1/2"
13	1	903420-01	SELF LOCKING RETAINING RING, 1/2"
14	1	267326-01	RETENTION RAMP SPRING HOOK
15	2	904005-1	RIVET, 3/16" X 7/16"
16	2	903421-02	WASHER, 1/4"
17	1	900715-15	PAN HEAD SCREW, 1/4"-20 X 2-1/4" LG.
18	1	908095-02	HANDLE-STRAP W/GROMMET 9-1/2" LG.
19	1	901016-2	THIN LOCKING NUT, 1/4"-20
20	1	267041-02	RAMP
21	1	905007-03	ROLL PIN, 5/32" O.D.

**MAXON**<sup>®</sup> 11921 Slauson Ave. Santa Fe Springs, CA. 90670 (800) 227-4116 FAX (888) 771-7713

# FLIPOVER WITH DUAL RETENTION RAMPS

**MAXON®**

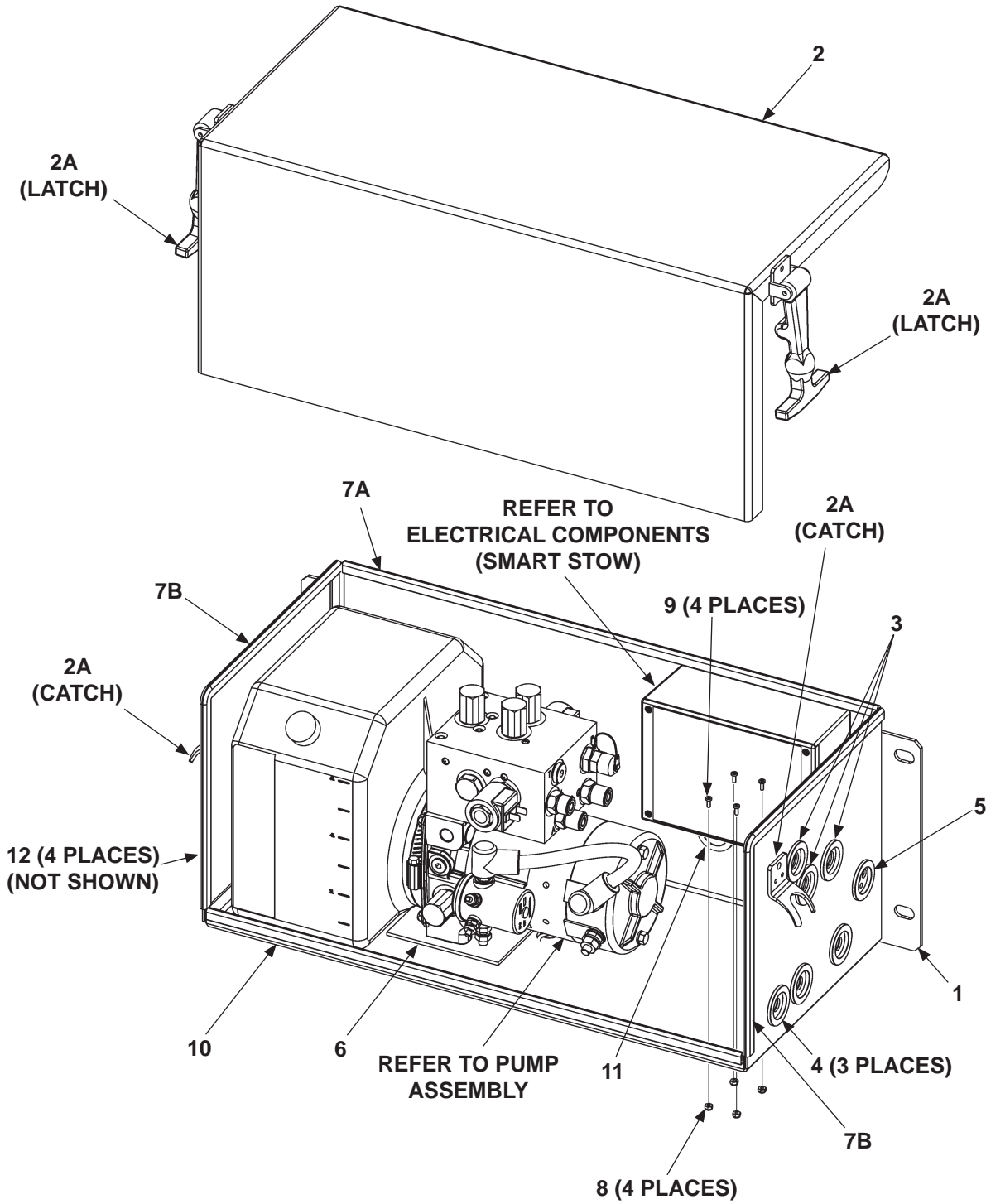
11921 Slauson Ave. Santa Fe Springs, CA. 90670 (800) 227-4116 FAX (888) 771-7713



ITEM	QTY	PART NO.	DESCRIPTION
REF	1	268499-06	FLIPOVER ASSEMBLY
1	1	268498-03	FLIPOVER WELDMENT
2	1	268752-01	SIDE PLATE, RH
3	1	268752-02	SIDE PLATE, LH
4	1	267045-04	HINGE ROD, 1/2" X 84-3/4" LG.
5	2	267045-06	HINGE ROD, 1/2" X 42-9/16" LG.
6	10	311022-10	HINGE, 1/2" LG.
7	3	905007-07	ROLL PIN, 5/32" X 1" LG.
8	2	905318-04	EXTRUSION BUMPER
9	10	900748-03	PAN HEAD SCREW, 1/4"-20 X 5/8" LG.
10	2	311038-11	RETENTION RAMP HOOK
11	2	283951-01	CLEVIS PIN, 1/4" O.D.
12	2	903413-02	WASHER, 1/2"
13	2	903420-01	SELF LOCKING RETAINING RING, 1/2"
14	2	267326-01	RETENTION RAMP SPRING HOOK
15	4	904005-1	RIVET, 3/16" X 7/16"
16	4	903421-02	WASHER, 1/4"
17	1	900715-15	PAN HEAD SCREW, 1/4"-20 X 2-1/4" LG.
18	1	908095-02	HANDLE-STRAP W/GROMMET 9-1/2" LG.
19	1	901016-2	THIN LOCKING NUT, 1/4"-20
20	1	267041-04	DUAL RAMP, LH
21	1	267041-06	DUAL RAMP, RH
22	2	905007-03	ROLL PIN, 5/32" O.D.

# PUMP BOX ASSEMBLY (SMART STOW)

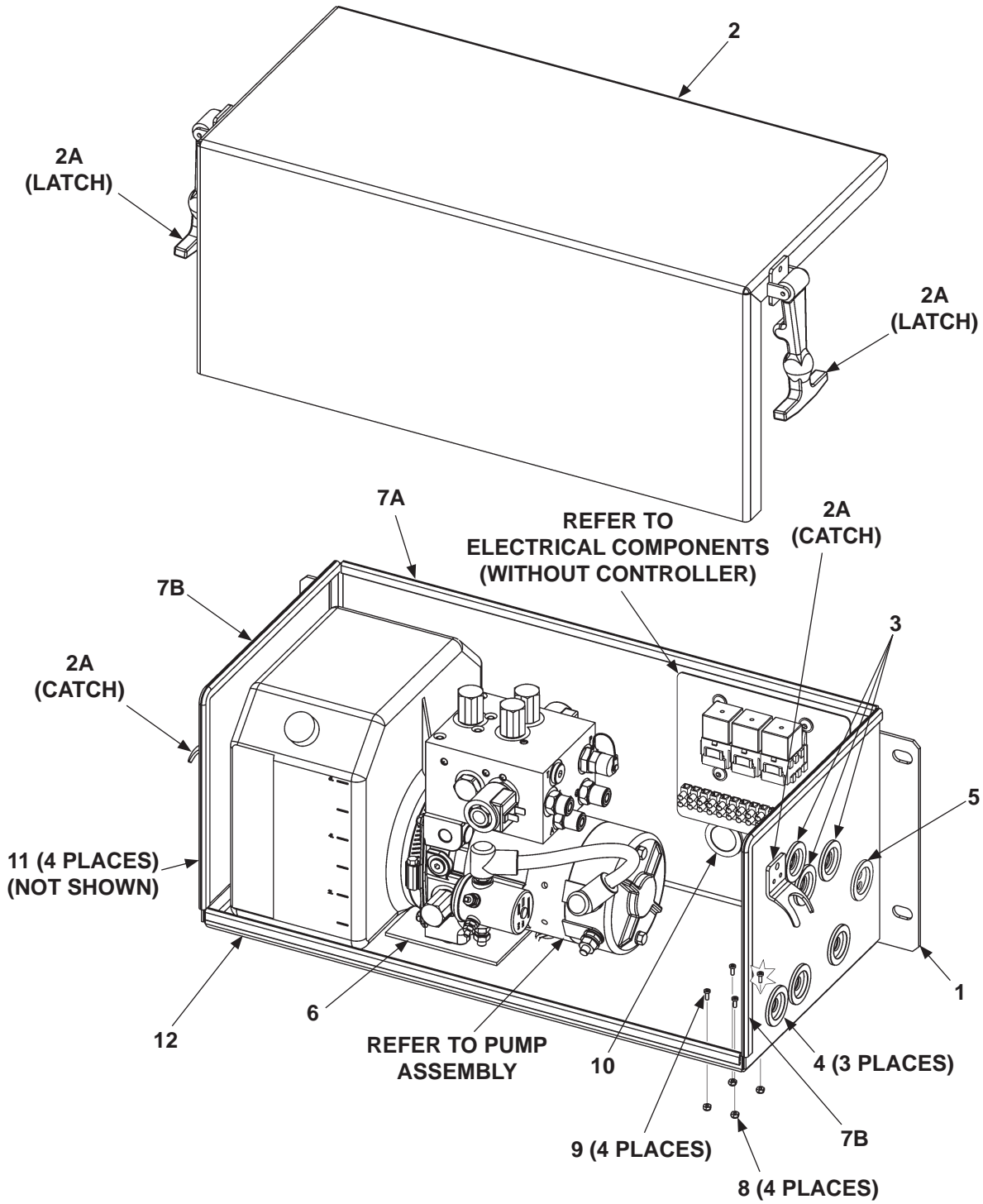
**MAXON®** 11921 Slauson Ave. Santa Fe Springs, CA. 90670 (800) 227-4116 FAX (888) 771-7713



ITEM	QTY	PART NO.	DESCRIPTION
REF	1	268276-01	POWER PACK & CONTROLLER ASSEMBLY
1	1	268080-01	PUMP BOX WELDMENT
2	1	268081-01	PUMP BOX COVER
2A	2	215139	CATCH & FASTENER
3	3	266428-07	GROMMET, 1" O.D., 5/8" I.D. HOLE
4	3	266428-04	GROMMET, 1" O.D., 1/2" I.D. HOLE
5	1	266428-10	GROMMET, 1" O.D., 3 HOLES
6	1	268535-01	HYDRAULIC PUMP SUPPORT PLATE
7	1	093212	EDGE TRIM, 60" LG.
7A	1	-	EDGE TRIM, 21-3/4" LG.
7B	2	-	EDGE TRIM, 19" LG.
8	4	901007	NYLON NUT, .112-40
9	4	900024-5	PAN HEAD SCREW, 4-40 X 5/16" LG.
10	1	093203-11	BULB TRIM SEAL, 21-3/4" LG.
11	1	266428-11	GROMMET, 1" I.D.
12	4	900057-2	SCREW, SELF TAPPING, #10-24 X 1/2" (NOT SHOWN)

# PUMP BOX ASSEMBLY (WITHOUT CONTROLLER)

**MAXON®**  
11921 Slauson Ave. Santa Fe Springs, CA. 90670 (800) 227-4116 FAX (888) 771-7713

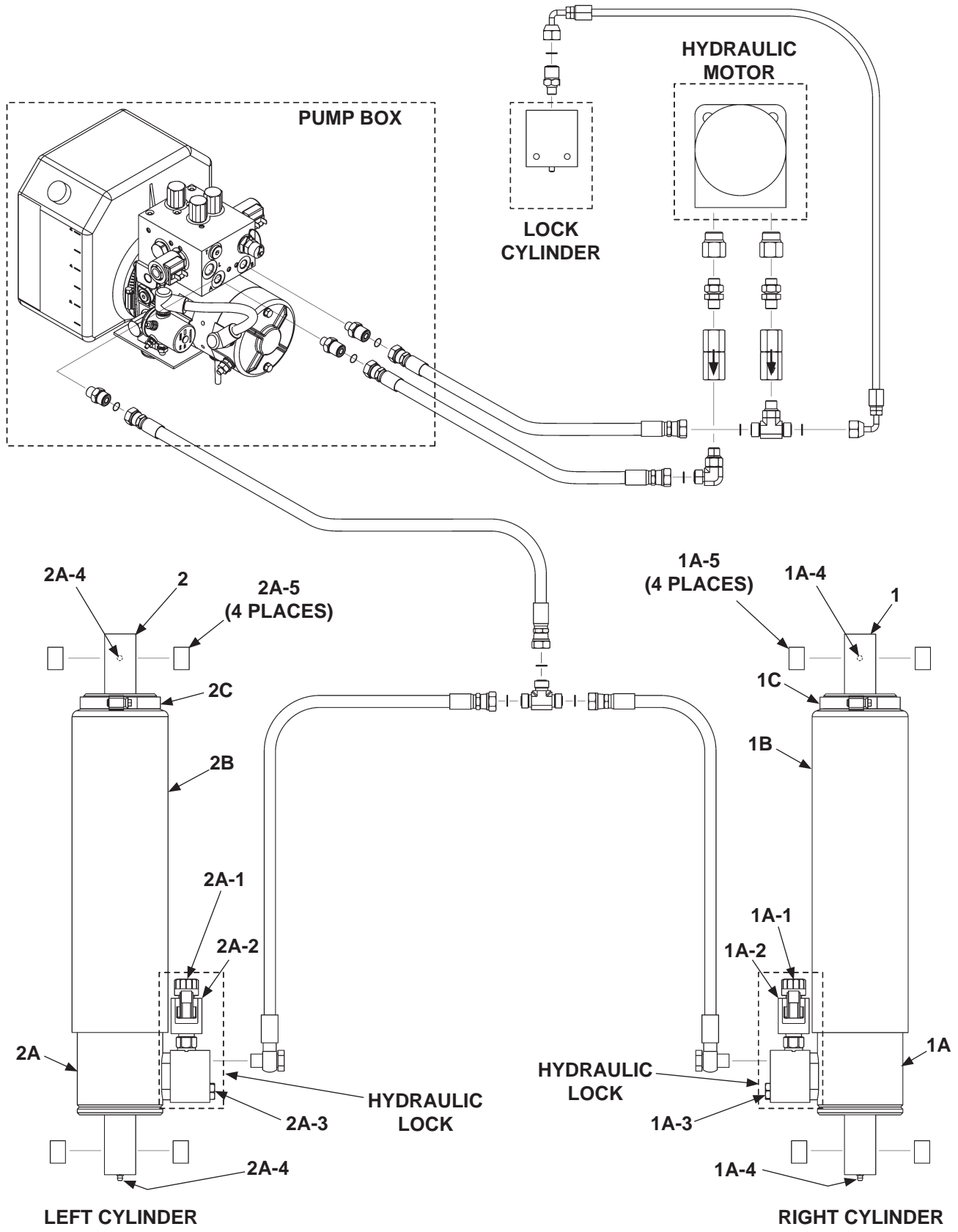




ITEM	QTY	PART NO.	DESCRIPTION
REF	1	268987-01	POWER PACK & CONTROLLER ASSEMBLY
1	1	268080-01	PUMP BOX WELDMENT
2	1	268081-01	PUMP BOX COVER
2A	2	215139	CATCH & FASTENER
3	3	266428-07	GROMMET, 1" O.D., 5/8" I.D. HOLE
4	3	266428-04	GROMMET, 1" O.D., 1/2" I.D. HOLE
5	1	266428-09	GROMMET, 1" O.D., 3 HOLES
6	1	268535-01	HYDRAULIC PUMP SUPPORT PLATE
7	1	093212	EDGE TRIM, 60" LG.
7A	1	-	EDGE TRIM, 21" LG.
7B	2	-	EDGE TRIM, 19" LG.
8	4	901007	NYLON NUT, .112-40
9	4	900024-5	PAN HEAD SCREW, 4-40 X 5/16" LG.
10	1	263814	GROMMET, 1" I.D.
11	4	900057-2	SCREW, SELF TAPPING, #10-24 X 1/2" (NOT SHOWN)
12	1	093203-11	BULB TRIM SEAL, 21-3/4" LG.

# HYDRAULIC COMPONENTS

**MAXON**<sup>®</sup>  
 11921 Slauson Ave. Santa Fe Springs, CA. 90670 (800) 227-4116 FAX (888) 771-7713



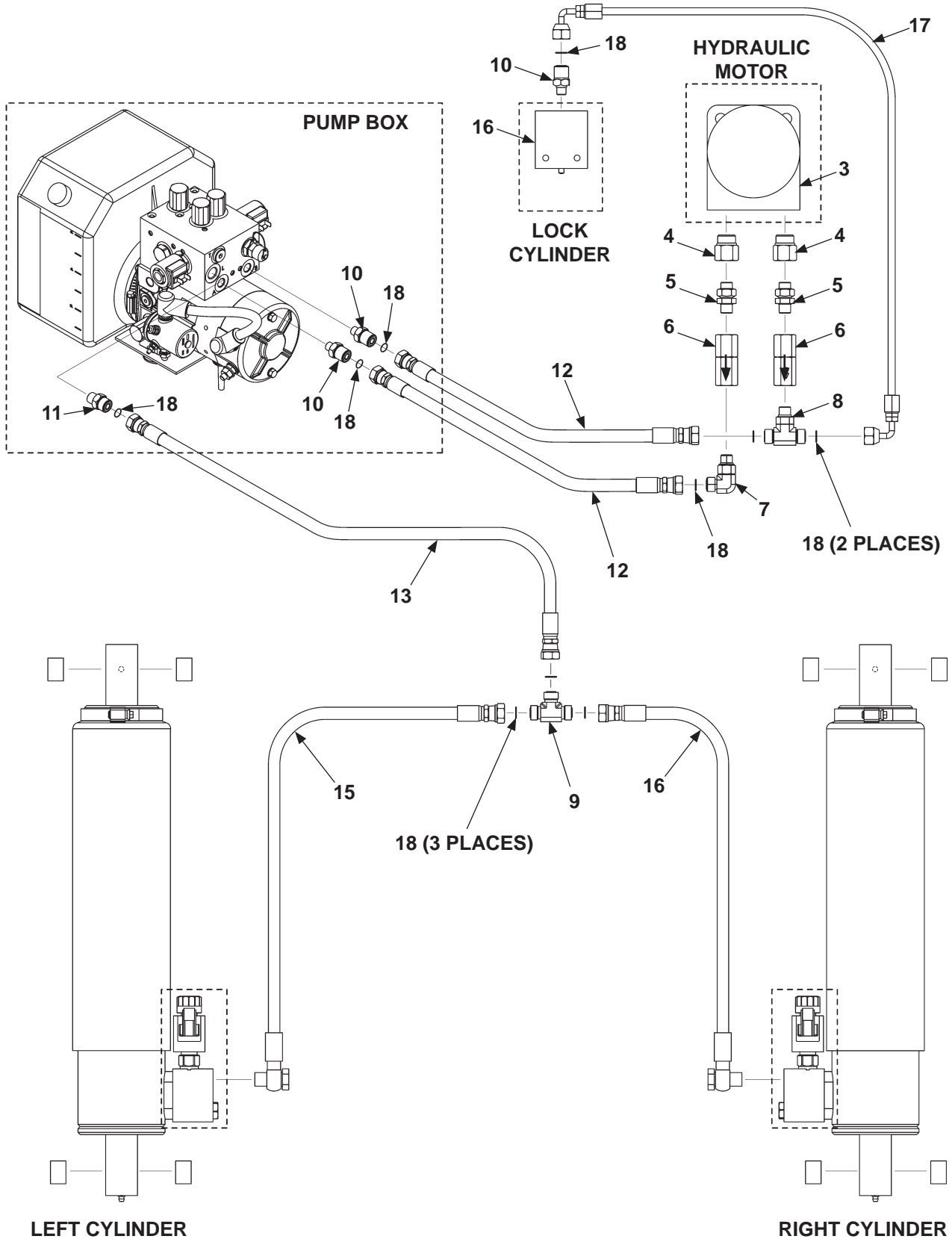
## CAUTION

To prevent hydraulic lock from being damaged, torque replacement valve cartridge to 25 lbs.-ft. & coil nut to 4-6 lbs.-ft.

ITEM	QTY.	PART NO.	DESCRIPTION
1	1	268552-01	CYLINDER ASSEMBLY, RH, 12V
1A	1	268502-01	CYLINDER, RH
1A-1	1	906832-01	VALVE
1A-2	1	906824-01	COIL
1A-3	1	268280-01	FLOW CONTROL VALVE
1A-4	2	908131-01	GREASE FITTING
1A-5	4	908046-05	SELF LUBE BEARING, 1-1/4" LG.
1B	1	268399-01	CYLINDER BELLOW
1C	1	908133-01	CLAMP, 3-1/6" - 4" RANGE
2	1	268552-02	CYLINDER ASSEMBLY, LH, 12V
2A	1	268502-02	CYLINDER, LH
2A-1	1	906832-01	VALVE
2A-2	1	906824-01	COIL
2A-3	1	268280-01	FLOW CONTROL VALVE
2A-4	2	908131-01	GREASE FITTING
2A-5	4	908046-05	SELF LUBE BEARING, 1-1/4" LG.
2B	1	268399-01	CYLINDER BELLOW
2C	1	908133-01	CLAMP, 3-1/6" - 4" RANGE

# HYDRAULIC COMPONENTS - Continued

**NOTE:** Replacement face seal fittings come with required O-rings.



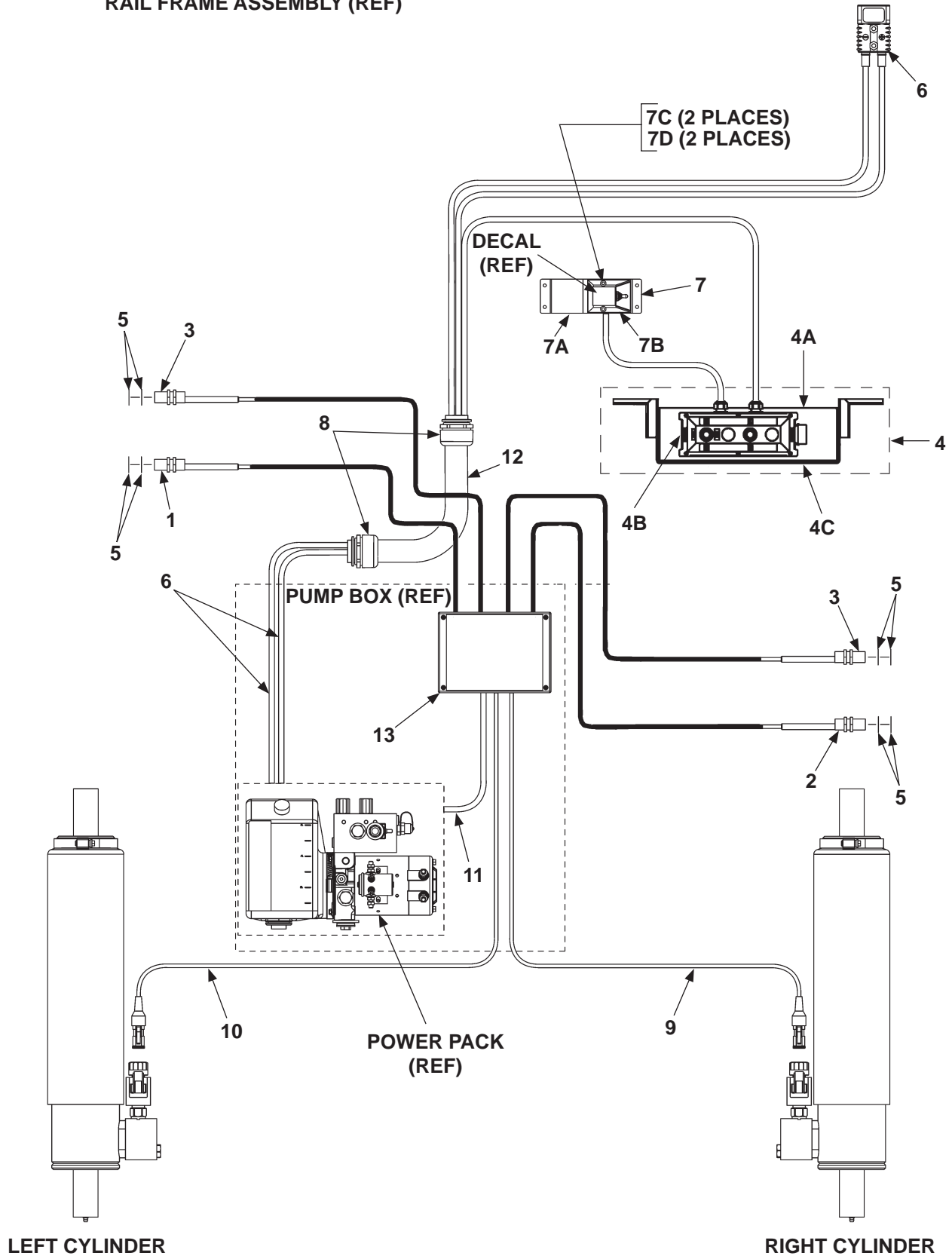
**MAXON**

11921 Slauson Ave. Santa Fe Springs, CA. 90670 (800) 227-4116 FAX (888) 771-7713

ITEM	QTY.	PART NO.	DESCRIPTION
3	1	268272-03	HYDRAULIC MOTOR
4	2	906812-01	REDUCER STRAIGHT THREAD
5	2	906786-01	UNION, #6M-M, O-RING
6	2	906709-02	FLOW REGULATOR VALVE, #6, 2GPM
7	1	906813-01	ELBOW #6, 3/8" O-RING FACE SEAL
8	1	906745-01	BRANCH TEE, FACE SEAL #6,O-RING, M-M
9	1	905150	UNION TEE, FACE SEAL 3/8" M, 6-JLO
10	3	906759-01	CONNECTOR, FACE SEAL #6, O-RING #4, M-M
11	1	905173	CONNECTOR, FACE SEAL #6 & O-RING #6, M-M
12	2	268671-01	HOSE ASSEMBLY, 3/8", 25" LG.
13	1	268671-02	HOSE ASSEMBLY, 3/8", SAE #6, 22" LG.
14	1	268672-01	HOSE ASSEMBLY, 3/8", #6-BANJO, 95-1/2" LG.
15	1	268672-02	HOSE ASSEMBLY, 3/8", #6-BANJO, 64" LG.
16	1	268501-01	SLIDER LOCK CYLINDER
17	1	268673-01	HOSE ASSEMBLY, 1/4", SAE #6, 42" LG.
18	10	906712-02	O-RING, #6 (3/8" FACE SEAL TUBE-END)

# ELECTRICAL COMPONENTS (SMART STOW)

RAIL FRAME ASSEMBLY (REF)



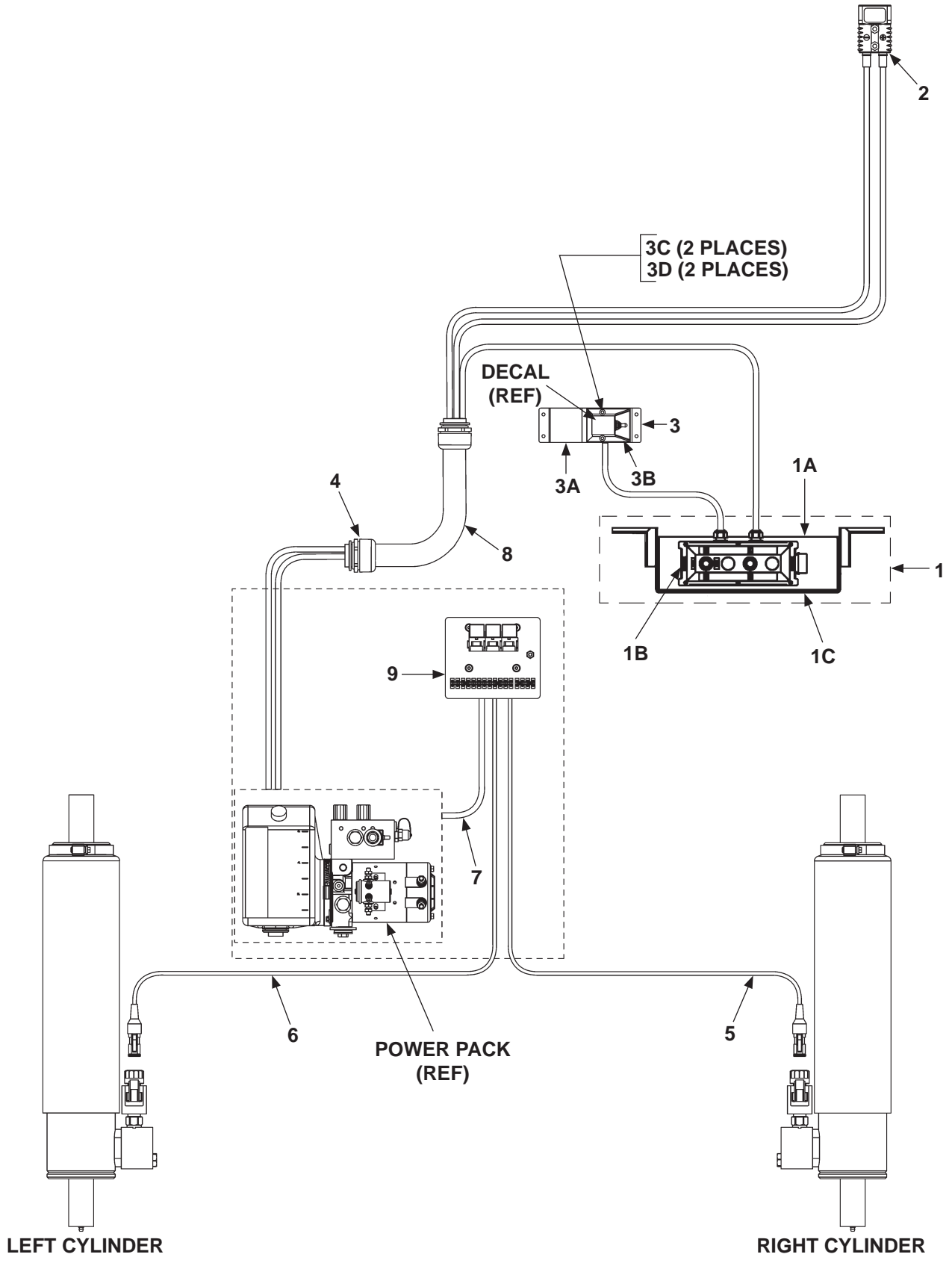
**MAXON**<sup>®</sup>

11921 Slauson Ave. Santa Fe Springs, CA. 90670 (800) 227-4116 FAX (888) 771-7713

ITEM	QTY.	PART NO.	DESCRIPTION
1	1	282631-01	STOW PROX SENSOR WIRE ASSEMBLY
2	1	282631-05	SLIDE PROX IN/OUT WIRE ASSEMBLY
3	2	282631-06	PARK/IN PROX SENSOR WIRE ASSEMBLY
4	1	283667-05	EXTERNAL CONTROL ASSEMBLY
4A	1	283657-01	BOX WELDMENT
4B	1	283665-05	EXTERNAL HAND CONTROL, NO KEY, 12VDC
4C	1	093209-22	EDGE TRIM (25-1/2" LG.)
4D	4	902000-3	FLAT WASHER, #6 (NOT SHOWN)
4E	4	902011-17	LOCK WASHER, #6 (NOT SHOWN)
4F	4	903111-01	HEX NUT, #6-32 (NOT SHOWN)
5	8	903439-01	LOCK WASHER, INTERNAL TOOTH
6	1	282632-01	CABLE ASSEMBLY, 2 GA, 12VDC
7	1	268598-01	INTERNAL CONTROL
7A	1	268599-01	BRACKET
7B	1	267959-01	MOLDED SWITCH
7C	2	900007-6	SCREW, PAN HEAD, #10-24 X 3/4" LG.
7D	2	901003	LOCK NUT, NYLON, #10-24
8	2	906559-01	STRAIGHT CONNECTOR FITTING
9	1	268274-01	RIGHT SIDE CABLE, 78" LG, 16GA
10	1	268274-02	LEFT SIDE CABLE, 104" LG, 16GA
11	1	282583-01	PUMP CONTROL WIRE ASSEMBLY
12	1	906560-48	SUPER FLEX CONDUIT
13	1	268291-01	CONTROLLER ASSEMBLY
14	6	205780	PLASTIC TIE, 7" LG. (NOT SHOWN)

# ELECTRICAL COMPONENTS (WITHOUT CONTROLLER)

**MAXON®**  
 11921 Slauson Ave. Santa Fe Springs, CA. 90670 (800) 227-4116 FAX (888) 771-7713





ITEM	QTY.	PART NO.	DESCRIPTION
1	1	283667-05	EXTERNAL CONTROL ASSEMBLY
1A	1	283657-01	BOX WELDMENT
1B	1	283665-05	EXTERNAL HAND CONTROL, NO KEY, 12VDC
1C	1	093209-22	EDGE TRIM (25-1/2" LG.)
1D	4	902000-3	FLAT WASHER, #6 (NOT SHOWN)
1E	4	902011-17	LOCK WASHER, #6 (NOT SHOWN)
1F	4	903111-01	HEX NUT, #6-32 (NOT SHOWN)
2	1	282632-01	CABLE ASSEMBLY, 2 GA, 12VDC
3	1	268598-01	INTERNAL CONTROL
3A	1	268599-01	BRACKET
3B	1	267959-01	MOLDED SWITCH
3C	2	900007-6	SCREW, PAN HEAD, #10-24 X 3/4" LG. (NOT SHOWN)
3D	2	901003	LOCK NUT, NYLON, #10-24 (NOT SHOWN)
4	2	906559-01	STRAIGHT CONNECTOR FITTING
5	1	268274-01	RIGHT SIDE CABLE, 78" LG, 16GA
6	1	268274-02	LEFT SIDE CABLE, 104" LG, 16GA
7	1	282583-01	PUMP CONTROL WIRE ASSEMBLY
8	1	906560-48	SUPER FLEX CONDUIT
9	1	268992-01	RELAY ASSY, GPSLR
10	6	205780	PLASTIC TIE, 7" LG. (NOT SHOWN)

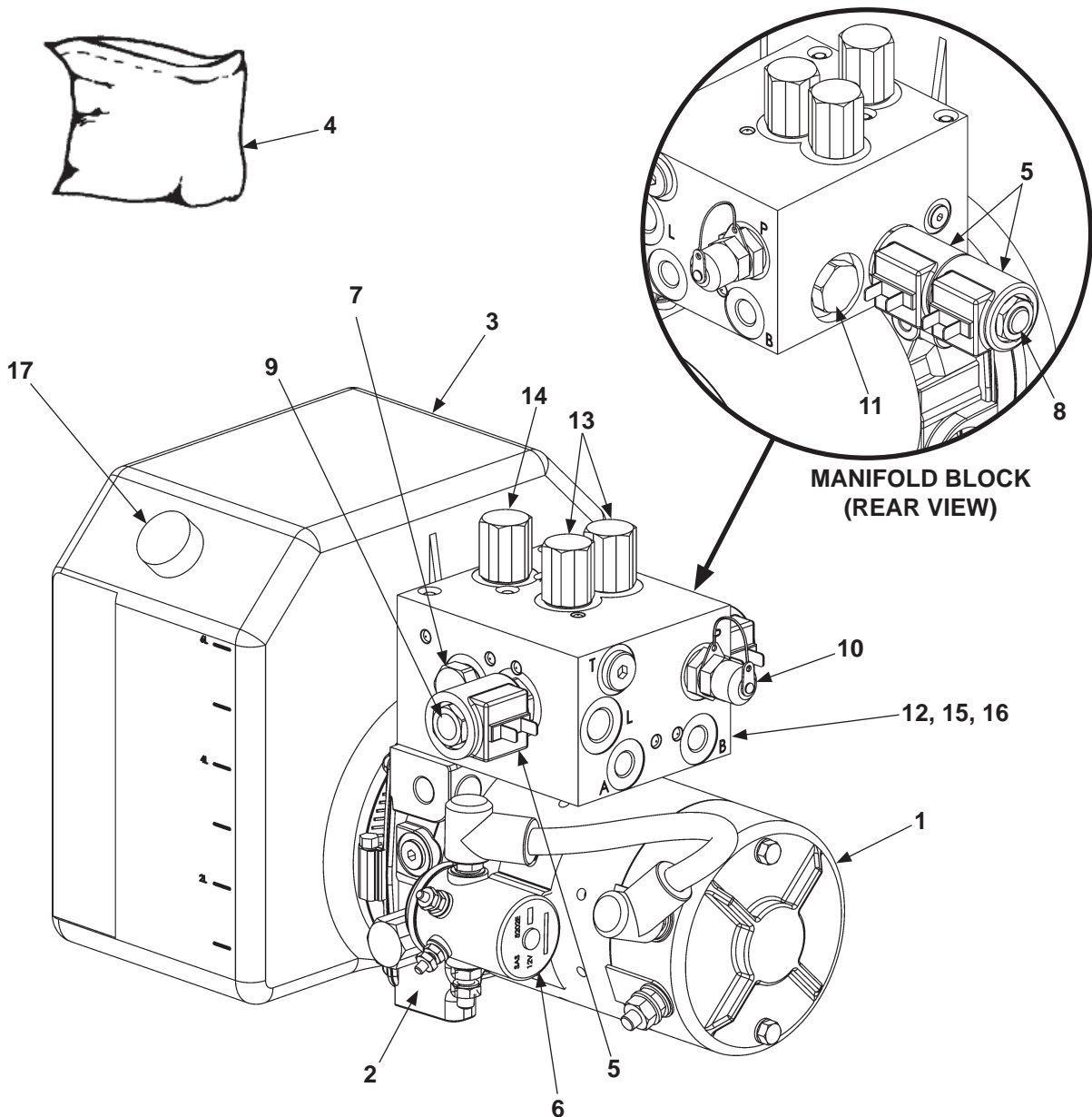
## 12 VDC POWER UNIT

### CAUTION

Do not over-tighten the terminal nuts on starter solenoid. For the load terminals, torque nuts to 40 lbs.-in. max. Torque the nuts on #10-32 control terminals 15-20 lbs.-in.

### CAUTION

To prevent damage when installing 2-way valves, torque valve cartridge nut to 30 lbs.-in. max.

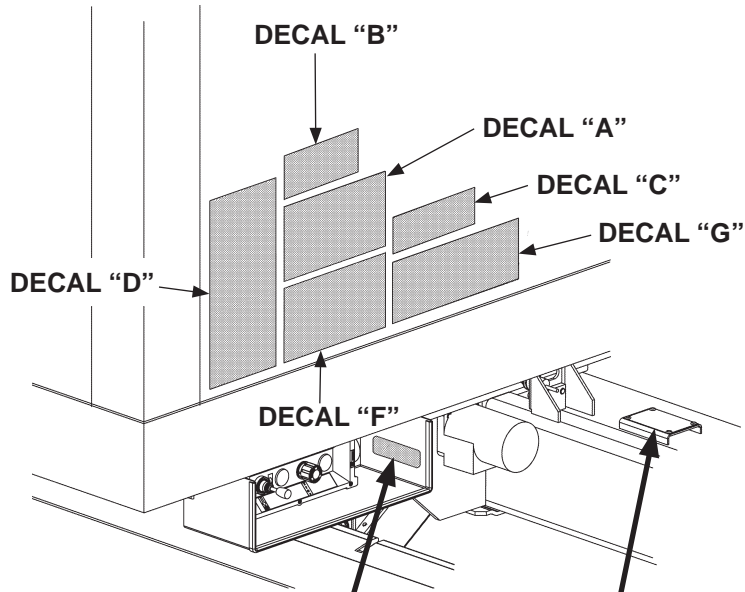


**MAXON**<sup>®</sup>

11921 Slauson Ave. Santa Fe Springs, CA. 90670 (800) 227-4116 FAX (888) 771-7713

ITEM	QTY.	PART NO.	DESCRIPTION
REF	1	268271-01	PUMP ASSEMBLY, 12V
1	1	268446-01	DC MOTOR
2	1	268447-01	GC PUMP & PARTS
3	1	268354-01	RESERVOIR
4	1	268355-01	BOX ASSEMBLY KIT
4A	1	REF	GROMMET
4B	2	REF	SCREWS
4C	2	REF	WASHERS
4D	2	REF	GASKETS
4E	1	REF	BOX DRAIN
5	3	268448-01	SOLENOID VALVE COIL, 10 VOLT
6	1	268449-01	STARTER SWITCH, 12 VOLT
7	1	268358-01	CHECK VALVE
8	1	268359-01	2-POS / 4-WAY VALVE STEM
9	1	268360-01	2-POS / 2-WAY VALVE STEM
10	1	268361-01	TEST POINT FITTING
11	1	268362-01	DOUBLE POLE CHECK VALVE
12	1	268363-01	FLOW CONTROL VALVE KIT, 4 GPM
13	2	268364-01	RELIEF VALVE KIT, 1015 PSI
14	1	268365-01	RELIEF VALVE KIT, 2250 PSI
15	1	268366-01	MANIFOLD BLOCK
16	1	268367-01	MANIFOLD ASSEMBLY
17	1	268368-01	BREATHER

# DECALS (WITH SMART STOW)



DECAL  
P/N 268417-01



SERIAL PLATE (REF)

P/N 267431-01 (GPSLR-33) & P/N 267431-02 (GPSLR-44)

FIG. 60-1

**MAXON**<sup>®</sup>

11921 Slauson Ave. Santa Fe Springs, CA. 90670 (800) 227-4116 FAX (888) 771-7713

## SAFETY INSTRUCTIONS

Read all decals and operation manual before operating liftgate.

1. Do not use liftgate unless you have been properly instructed and have read, and are familiar with, the operating instructions.
2. Be certain vehicle is properly and securely braked before using the liftgate.
3. Always inspect this liftgate for maintenance or damage before using it. Do not use liftgate if it shows any sign of damage or improper maintenance.
4. Do not overload
5. Make certain the area in which the platform will open and close is clear before opening or closing the platform.
6. Make certain platform area, including the area in which loads may fall from platform, is clear before and at all times during operation of liftgate.
7. This liftgate is intended for loading and unloading of cargo only. Do not use this liftgate for anything but its intended use.

A

## WARNING

Read this information carefully.

- Improper operation of this Liftgate can result in serious personal injury. If you do not have a copy of the operating instructions, please obtain them from your employer, distributor, or lessor before you attempt to operate Liftgate.
- If there are signs of improper maintenance, damage to vital parts, or slippery platform surface, do not use the Liftgate until these problems have been corrected.
- If you are using a pallet jack, be sure it can be maneuvered safely.
- Do not operate a forklift on the platform.
- Do not allow any part of yours or your helper's body to be placed under, within, or around any portion of the moving Liftgate, or its mechanisms, or in a position that would trap them between the platform and the ground or truck when the Liftgate is operated.
- If a helper is riding the platform with you, make sure you are both doing so safely and that you are not in danger of coming in contact with any moving or potentially moving obstacles.
- **USE GOOD COMMON SENSE.**
- If load appears to be unsafe, do not lift or lower it.

For a free copy of other manuals that pertain to this model Liftgate, please visit our website at [www.maxonlift.com](http://www.maxonlift.com) or call Customer Service at (800) 227-4116.

F



**WARNING**  
Liftgate hazards can result in crushing or falling.  
Keep hands and feet clear of pinch points.  
If riding liftgate, make sure load is stable and footing is solid.

Read and understand all instructions and WARNINGS before use.

G

**CAUTION**  
Always stand clear of platform area.

C

THE MAXIMUM CAPACITY OF THIS LIFT IS  
**3300 POUNDS**  
WHEN THE LOAD IS CENTERED ON THE LOAD CARRYING PLATFORM

B

GPSLR 33 ONLY

THE MAXIMUM CAPACITY OF THIS LIFT IS  
**4400 POUNDS**  
WHEN THE LOAD IS CENTERED ON THE LOAD CARRYING PLATFORM

B

GPSLR 44 ONLY

## OPERATING INSTRUCTIONS

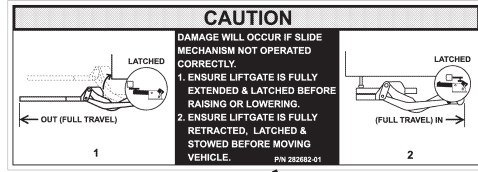
1. Power On
2. Slide Out To Unstow
3. Manually unfold using strap.
4. Raise
5. Lower
6. Manually fold using strap.
7. Slide In To Stow
8. Power Off

**IMPORTANT:** Release switches when liftgate shuts off.

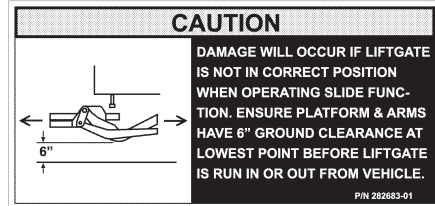
D

DECAL SHEET  
FIG. 61-1

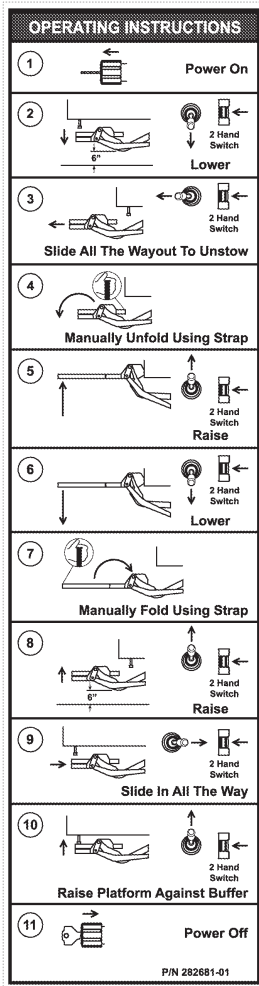
# DECALS (WITHOUT CONTROLLER)



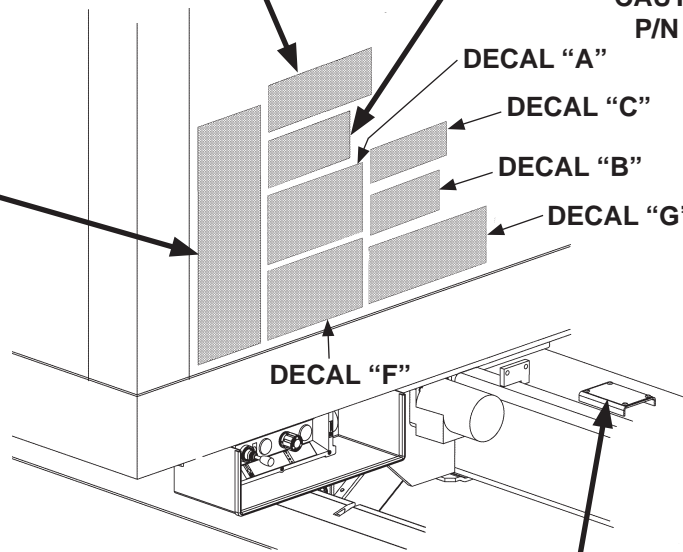
**CAUTION DECAL  
P/N 282682-01**



**CAUTION DECAL  
P/N 282683-01**



**OPERATION DECAL  
P/N 282681-01**



**SERIAL PLATE (REF)**

**P/N 282464-01 (GPSLR-33) & P/N 282464-02 (GPSLR-44)  
FIG. 62-1**

**SAFETY INSTRUCTIONS**

Read all decals and operation manual before operating liftgate.

1. Do not use liftgate unless you have been properly instructed and have read, and are familiar with, the operating instructions.
2. Be certain vehicle is properly and securely braked before using the liftgate.
3. Always inspect this liftgate for maintenance or damage before using it. Do not use liftgate if it shows any sign of damage or improper maintenance.
4. Do not overload
5. Make certain the area in which the platform will open and close is clear before opening or closing the platform.
6. Make certain platform area, including the area in which loads may fall from platform, is clear before and at all times during operation of liftgate.
7. This liftgate is intended for loading and unloading of cargo only. Do not use this liftgate for anything but its intended use.

(A)

**WARNING**

Read this information carefully.

- Improper operation of this Liftgate can result in serious personal injury. If you do not have a copy of the operating instructions, please obtain them from your employer, distributor, or lessor before you attempt to operate Liftgate.
- If there are signs of improper maintenance, damage to vital parts, or slippery platform surface, do not use the Liftgate until these problems have been corrected.
- If you are using a pallet jack, be sure it can be maneuvered safely.
- Do not operate a forklift on the platform.
- Do not allow any part of yours or your helper's body to be placed under, within, or around any portion of the moving Liftgate, or its mechanisms, or in a position that would trap them between the platform and the ground or truck when the Liftgate is operated.
- If a helper is riding the platform with you, make sure you are both doing so safely and that you are not in danger of coming in contact with any moving or potentially moving obstacles.
- **USE GOOD COMMON SENSE.**
- If load appears to be unsafe, do not lift or lower it.

For a free copy of other manuals that pertain to this model Liftgate, please visit our website at [www.maxonlift.com](http://www.maxonlift.com) or call Customer Service at (800) 227-4116.

(F)

**WARNING**

Liftgate hazards can result in crushing or falling.

Keep hands and feet clear of pinch points.

If riding liftgate, make sure load is stable and footing is solid.

Read and understand all instructions and WARNINGS before use.

(C)

**CAUTION**

Always stand clear of platform area.

(C)

THE MAXIMUM CAPACITY OF THIS LIFT IS

**3300 POUNDS**

WHEN THE LOAD IS CENTERED ON THE LOAD CARRYING PLATFORM

(B)

GPSLR 33 ONLY

THE MAXIMUM CAPACITY OF THIS LIFT IS

**4400 POUNDS**

WHEN THE LOAD IS CENTERED ON THE LOAD CARRYING PLATFORM

(B)

GPSLR 44 ONLY

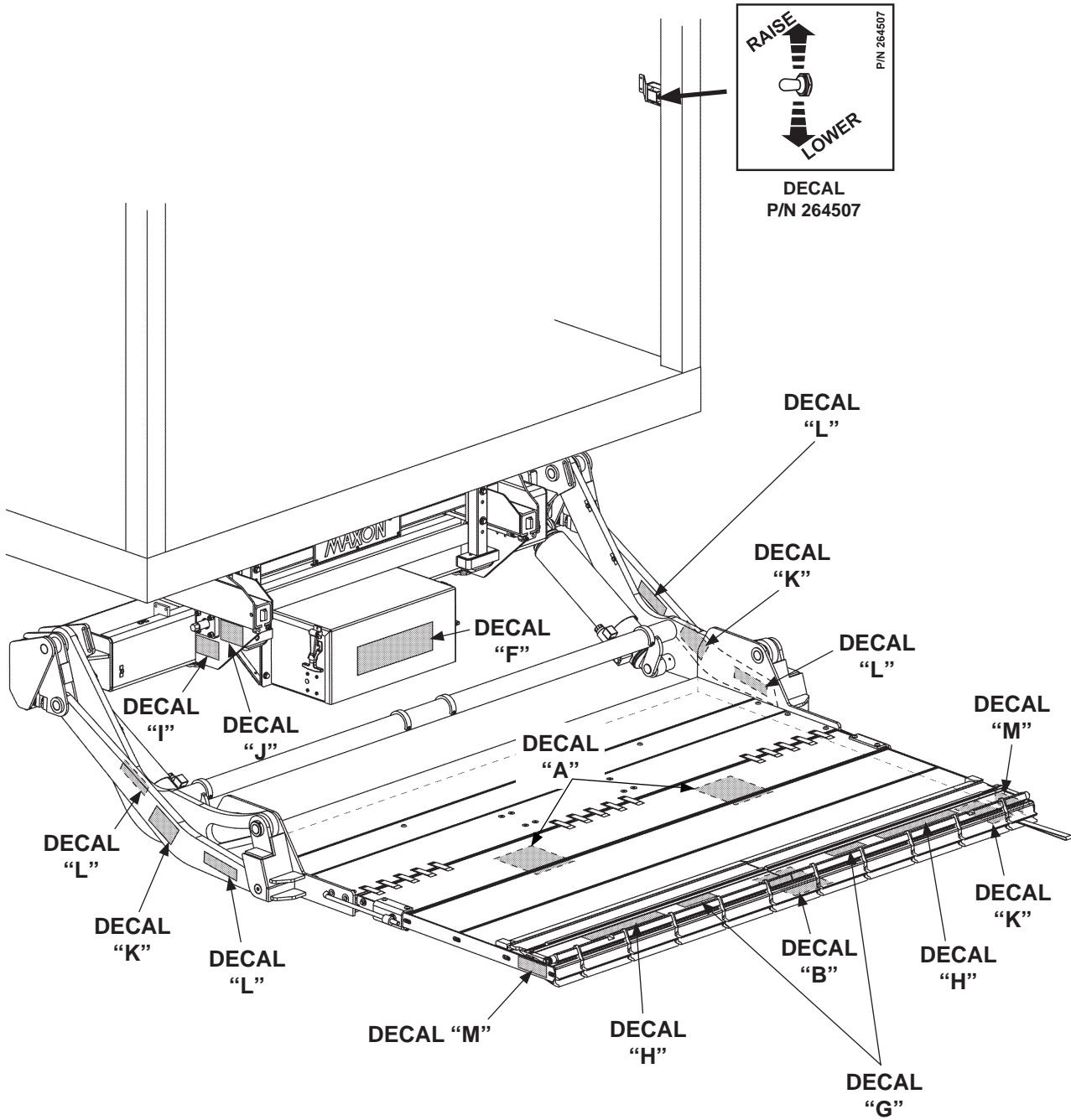
DECAL SHEET  
FIG. 63-1



# DECALS - Continued

**MAXON®**

11921 Slauson Ave. Santa Fe Springs, CA. 90670 (800) 227-4116 FAX (888) 771-7713





**WARNING**

When unstowing & stowing platform, stay clear of bumpers.

P/N 267432-01 **A**

**WARNING**

To avoid injury stay out of the path where the platform unfolds. Unfold platform from the side.

P/N 267432-01 **B**

**WARNING**

Avoid possible injury & damage to equipment if slider moves under power. Ensure battery is disconnected from lift-gate before operating the slider manually.

P/N 267432-01 **J**

**MANUAL SLIDER OPERATION & ACCESS INSTRUCTIONS**

P/N 267432-01 **I**

**WARNING**

To prevent personal injury & equipment damage, avoid working under the platform while platform is raised off the ground. Refer to Maintenance Manual for additional safety instructions.

**M**

**WARNING**

Keep hands clear of pinch points when folding flipover.

**M**

**WARNING**

To avoid possible injury and damage to equipment, never stand on lift arms, parallel arms, or bottom side of platform.

P/N 267432-01 **K**

**WARNING**

Keep hands & feet clear of lifting arms.

P/N 267432-01 **L**

**WARNING**

To prevent personal injury & damaged equipment, ramp must be in retention position when cart is being raised or lowered on platform.

P/N 267432-01 **C**

**1** a. Lift  
b. Pull to unhook ramp

**2** Release RH ramp and/or LH Ramp

**3** a. Slide  
b. Rotate

**4** a. Pull  
b. Rotate

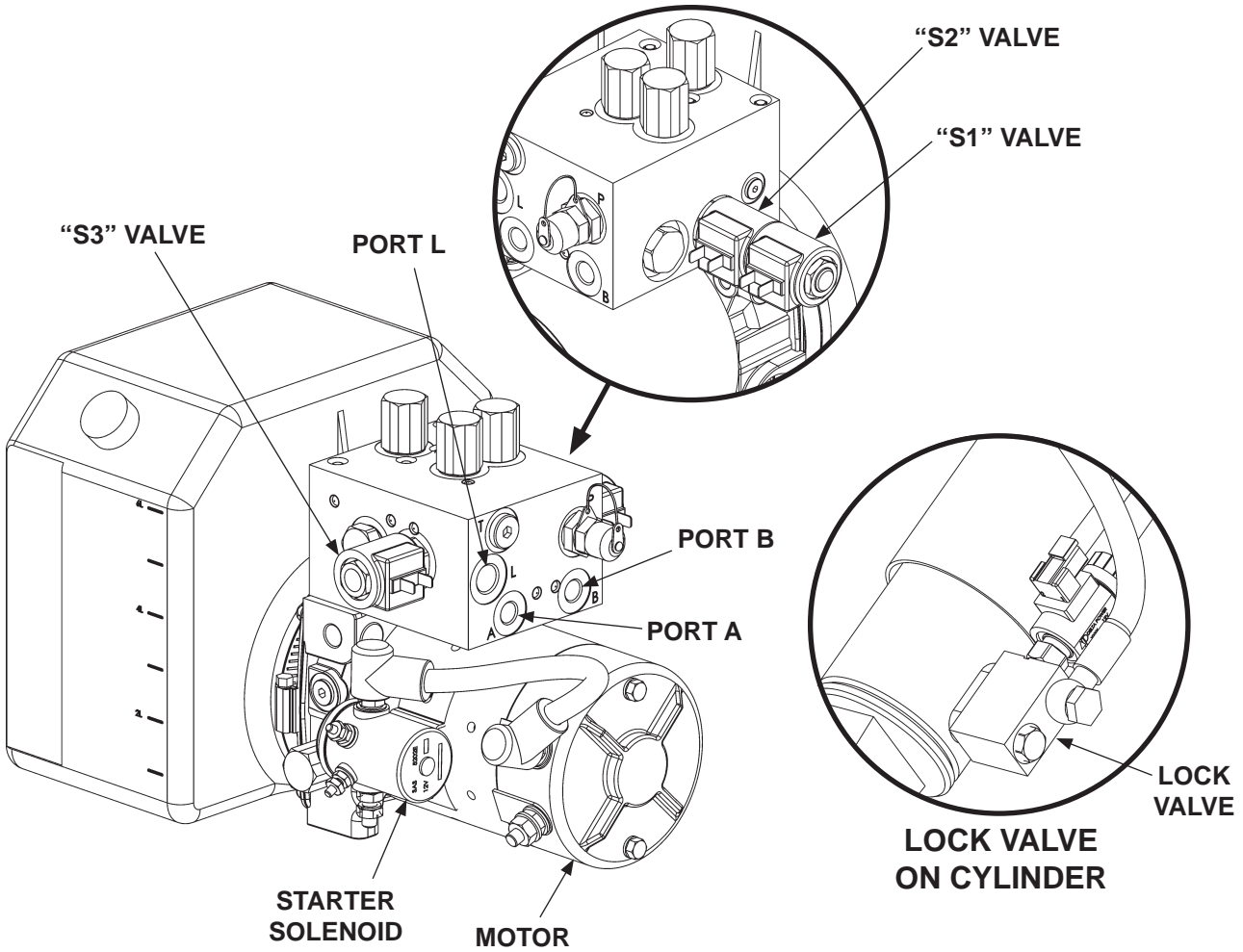
**5** a. Rotate  
b. Slide  
c. Hook

P/N 267432-01 **H**

DECAL SHEET 267432-01  
FIG. 65-1

# SYSTEM DIAGRAMS

## PUMP & MOTOR SOLENOID OPERATION



POWER UNIT MOTOR & SOLENOID OPERATION						
LIFTGATE FUNCTION	PORT	SOLENOID OPERATION (✓ MEANS ENERGIZED)				
		MOTOR	VALVE "S1"	VALVE "S2"	VALVE "S3"	LOCK VALVE
RAISE	L	✓	-	-	-	✓
LOWER	L	-	-	-	✓	✓
SLIDE OPEN	A	✓	-	✓	-	-
SLIDE CLOSED	B	✓	✓	-	-	-

REFER TO VALVES SHOWN ON  
HYDRAULIC SCHEMATIC

**TABLE 66-1**

**MAXON®**  
 11921 Slauson Ave. Santa Fe Springs, CA. 90670 (800) 227-4116 FAX (888) 771-7713

# HYDRAULIC SCHEMATIC

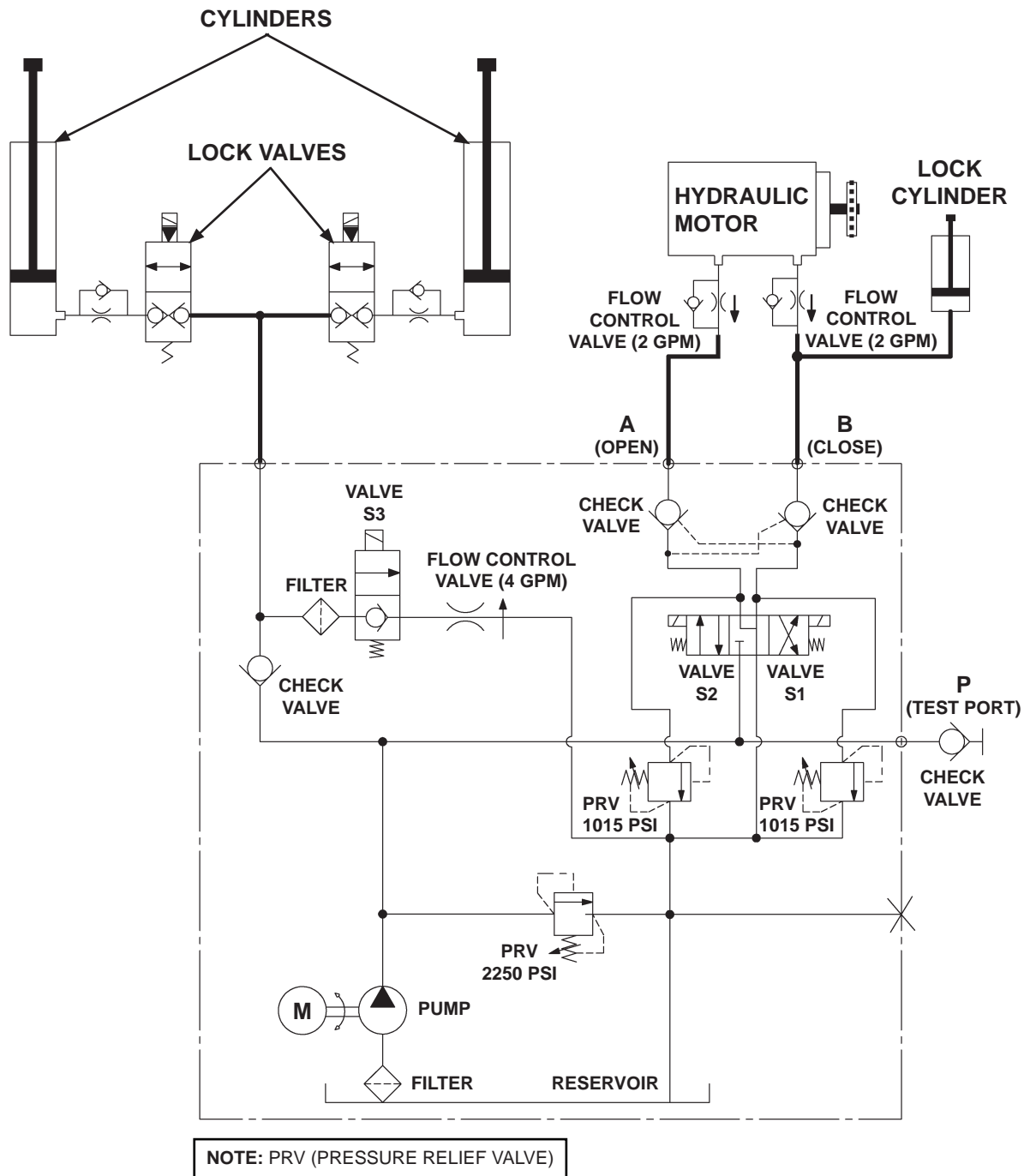
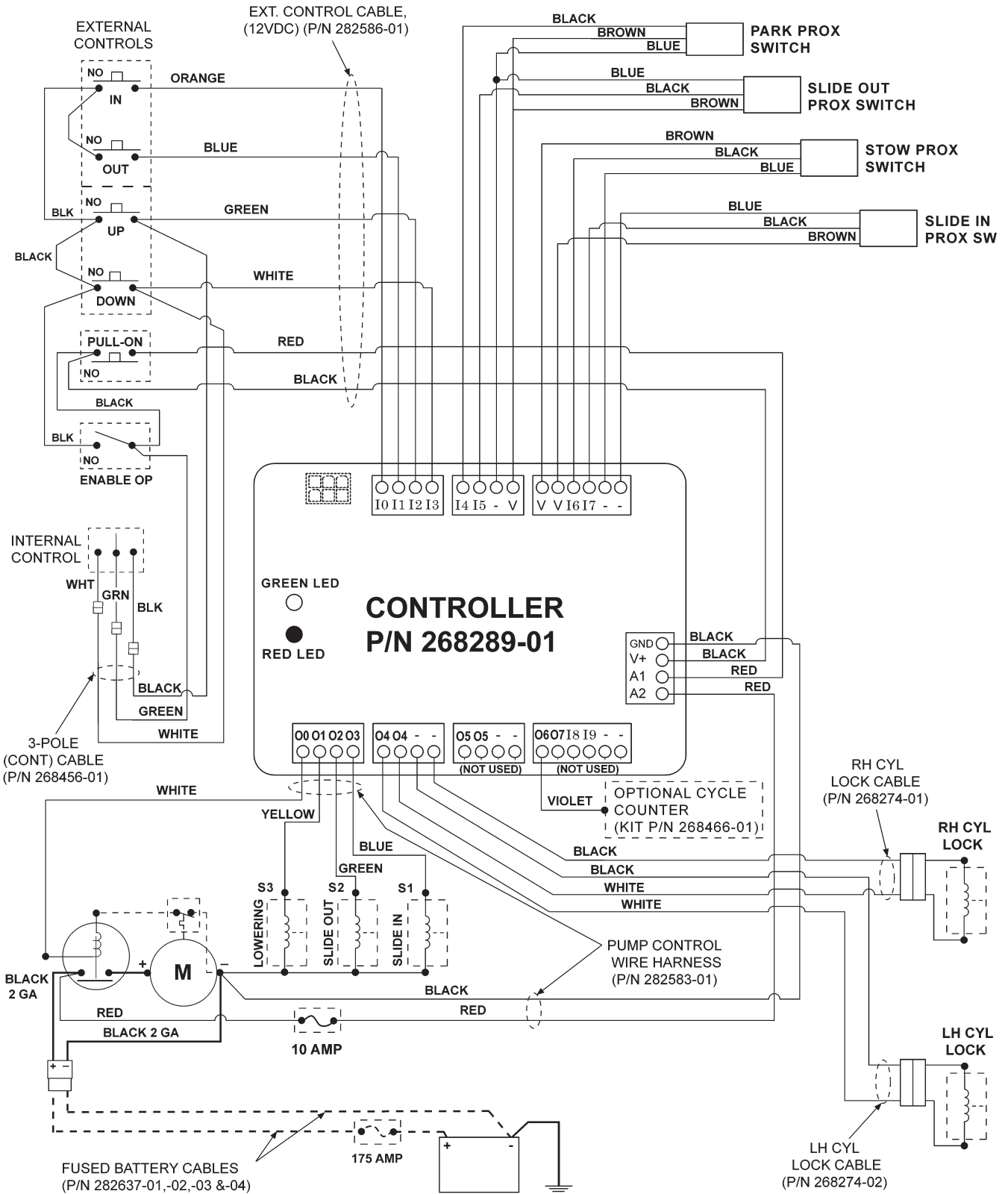


FIG. 67-1

# SYSTEM DIAGRAMS - Continued

## ELECTRICAL SCHEMATIC (SMART STOW)

**MAXON®**  
 11921 Slauson Ave. Santa Fe Springs, CA. 90670 (800) 227-4116 FAX (888) 771-7713



**FIG. 68-1**

# ELECTRICAL SCHEMATIC (WITHOUT CONTROLLER)

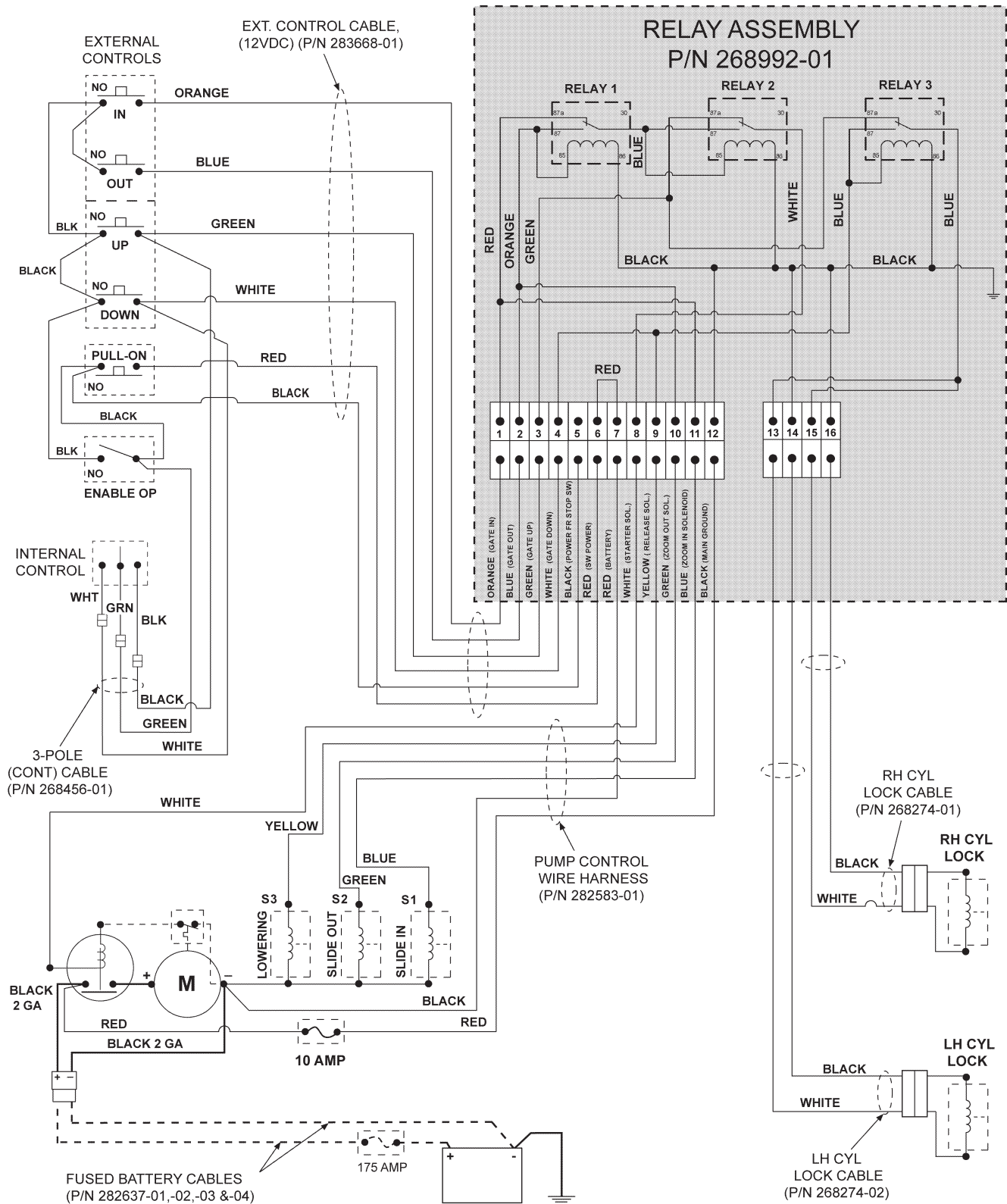


FIG. 69-1

# TROUBLESHOOTING

TO BE PROVIDED IN FUTURE UPDATE

**MAXON**<sup>®</sup>

11921 Slauson Ave. Santa Fe Springs, CA. 90670 (800) 227-4116 FAX (888) 771-7713

