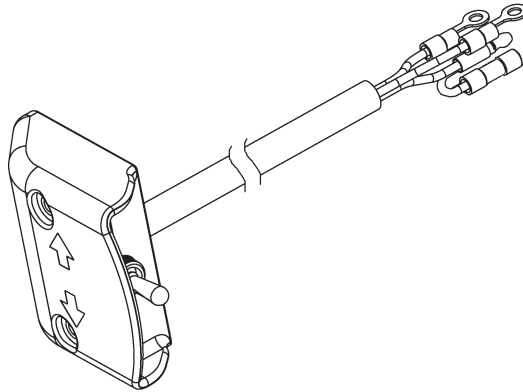
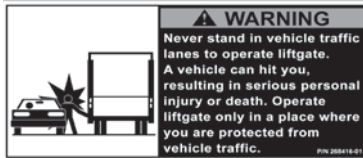


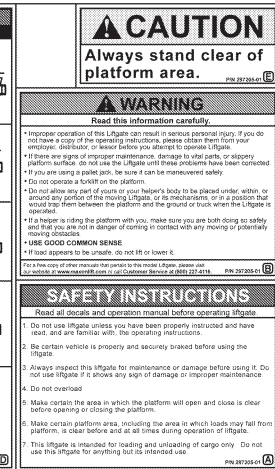
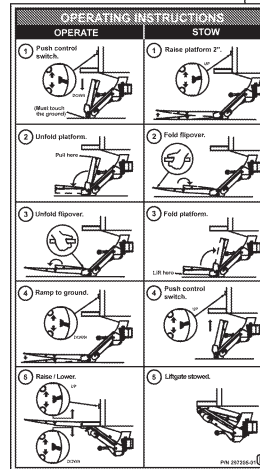
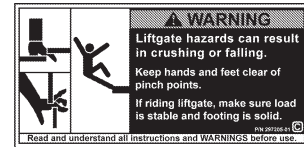
INSTRUCTION, STREET SIDE CONTROL KIT P/N 297162-01



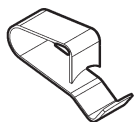
TOGGLE SWITCH ASSEMBLY, 175" LG.
P/N 296855-03
QTY. 1



DECAL, SS CONTROL WARNING
P/N 268416-01
QTY. 1



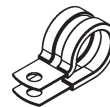
DECAL SHEET
P/N 297205-01
QTY. 1



SPRING CLIP
P/N 050079
QTY. 5



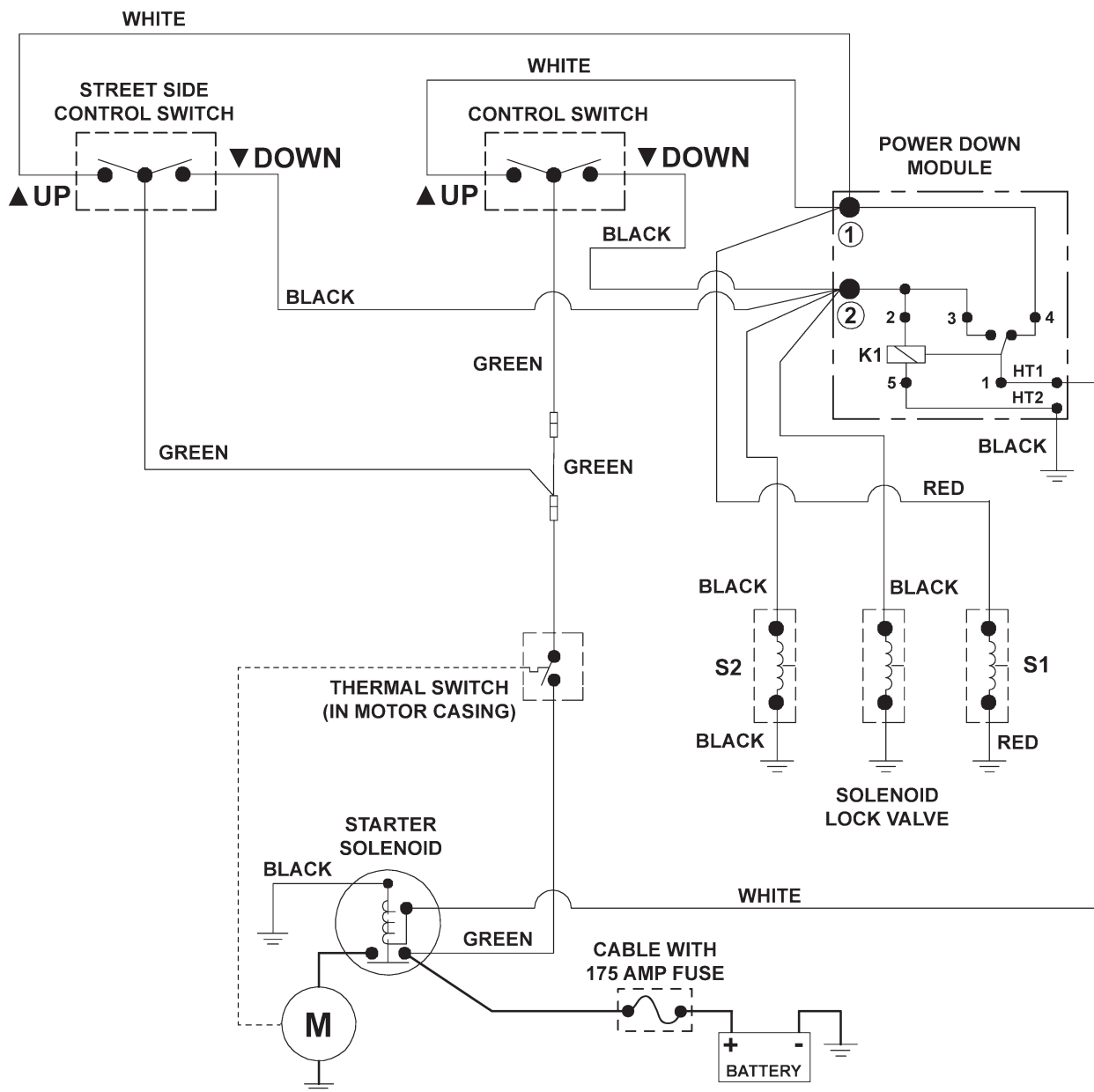
GROMMET
P/N 266428-12
QTY. 1



LOOM CLAMP #10
P/N 801681
QTY. 6



SELF-TAPPING SCREW
P/N 900057-5
QTY. 8



**GPT ELECTRICAL SCHEMATIC WITH OPTIONAL STREET SIDE CONTROL SWITCH
FIG. 2-1**

⚠ WARNING

Remove all rings, watches and jewelry before doing any electrical work.

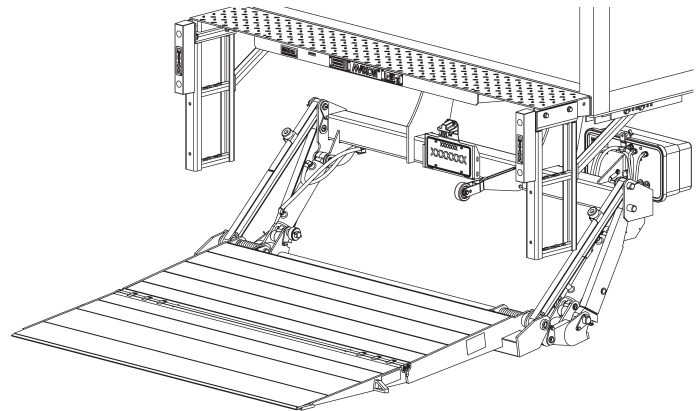
⚠ WARNING

To prevent accidental personal injury and equipment damage, disconnect (-) battery cable from battery.

⚠ WARNING

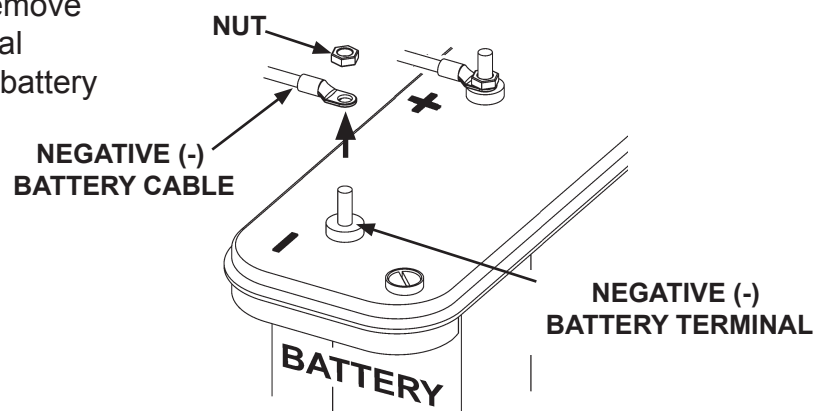
Never route an energized wire. Make sure battery is disconnected. Always route electrical wires clear of moving parts, brake lines, sharp edges and exhaust systems. Avoid making sharp bends in wiring. Attach securely. If drilling is necessary, first check behind the drilling surface so you do not damage any fuel lines, vent lines, brake lines or wires.

1. Lower platform to the ground. Then, unfold platform and flipover (**FIG. 3-1**). See **Operation Manual** for detailed operating instructions.



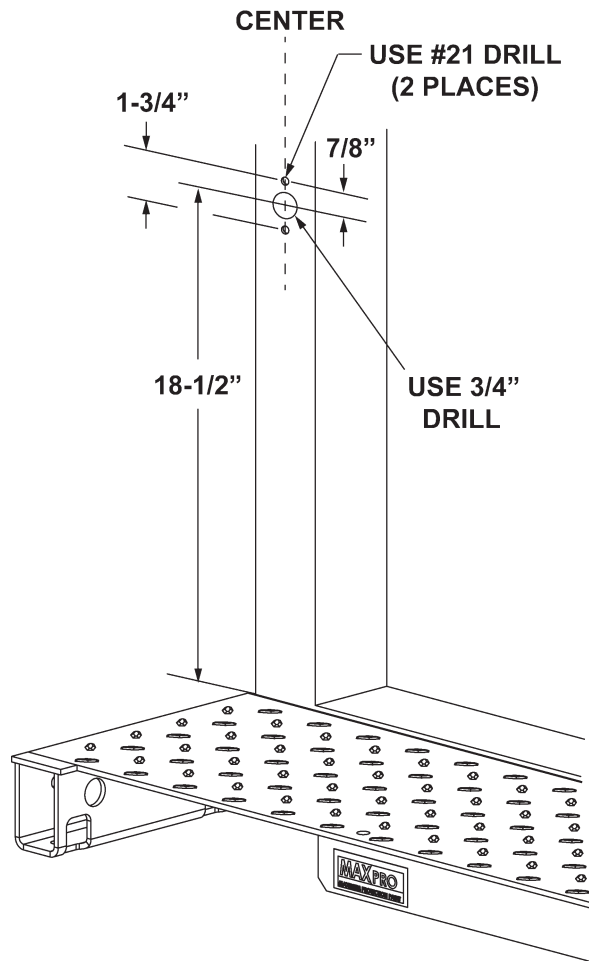
PLATFORM LOWERED TO THE GROUND
FIG. 3-1

2. Disconnect power from Liftgate. Remove nut from negative (-) battery terminal (**FIG. 3-2**). Disconnect negative (-) battery cable (**FIG. 3-2**).



DISCONNECTING POWER
FIG. 3-2

3. Drill one 3/4" hole and two #21-size holes in the vertical post on curb side of vehicle body as shown in FIG. 4-1.

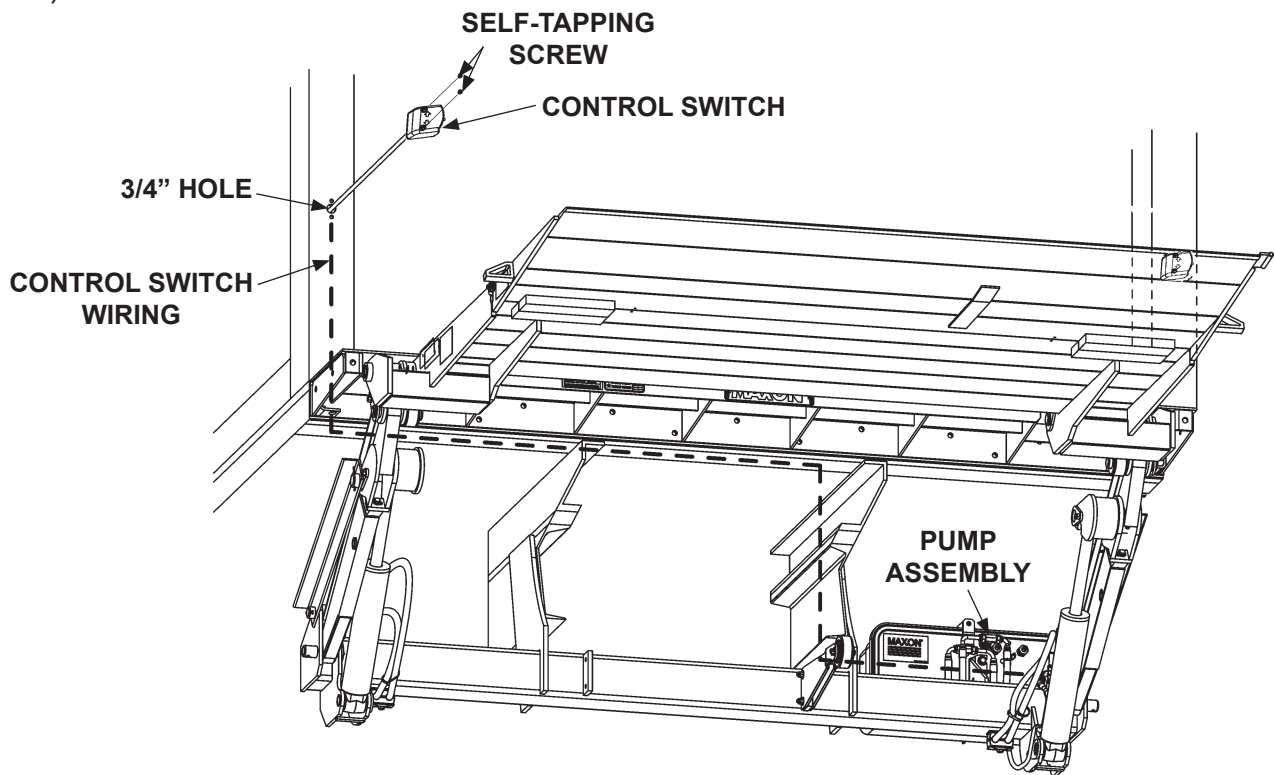


DRILLING HOLES IN VEHICLE BODY
FIG. 4-1

⚠ CAUTION

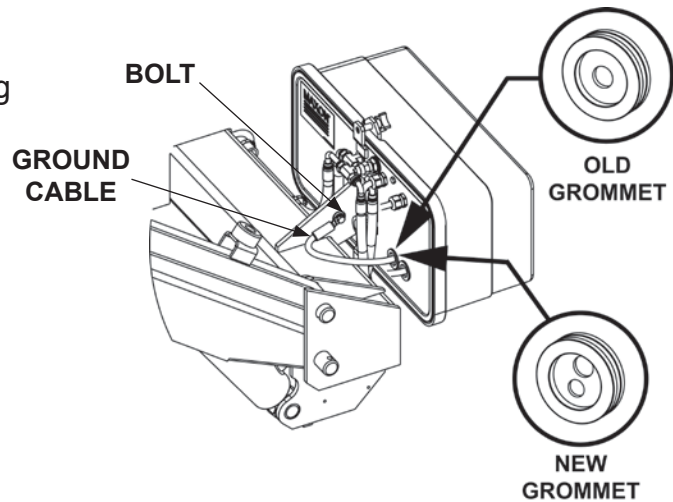
Always route electrical wires clear of moving parts, brake lines, sharp edges and exhaust systems. Avoid making sharp bends in wiring. Attach securely. If drilling is necessary, first check behind the drilling surface so you do not damage fuel lines, vent lines, brake lines or wires.

4. Insert control switch wiring into the 3/4" hole on the corner post and run it down the corner post, out and under the vehicle body to the pump assembly. (See dashed line - FIG. 5-1.) Secure wiring to vehicle body using frame clips and/or loom clamps with self tapping screws (Kit items).



**CONTROL SWITCH WIRING
FIG. 5-1**

5. Disconnect ground cable from pump mounting bracket (**FIG. 6-1**). Remove existing grommet from pump mounting plate (**FIG. 6-1**). Insert new grommet (Kit item) into pump mounting Plate.



REPLACING GROMMET

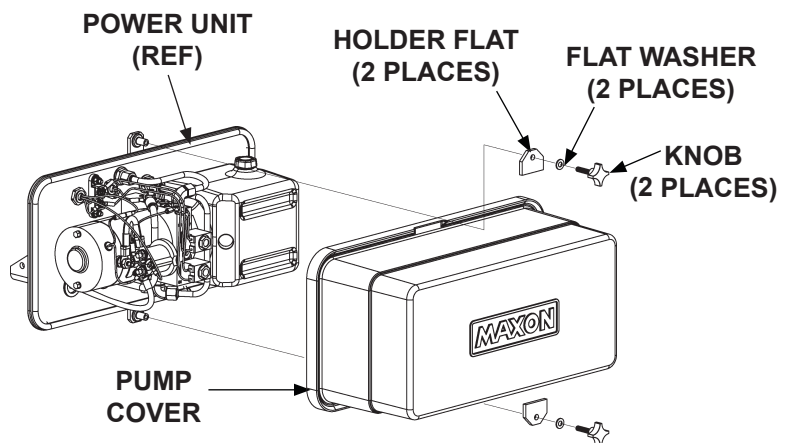
FIG. 6-1

6. Unbolt and remove pump cover (**FIG. 6-2**).

7. Insert switch wiring through new grommet on pump mounting plate (**FIG. 6-1**). Then, connect the switch wiring to the junction block as shown on the next page in **FIG. 7-1**.

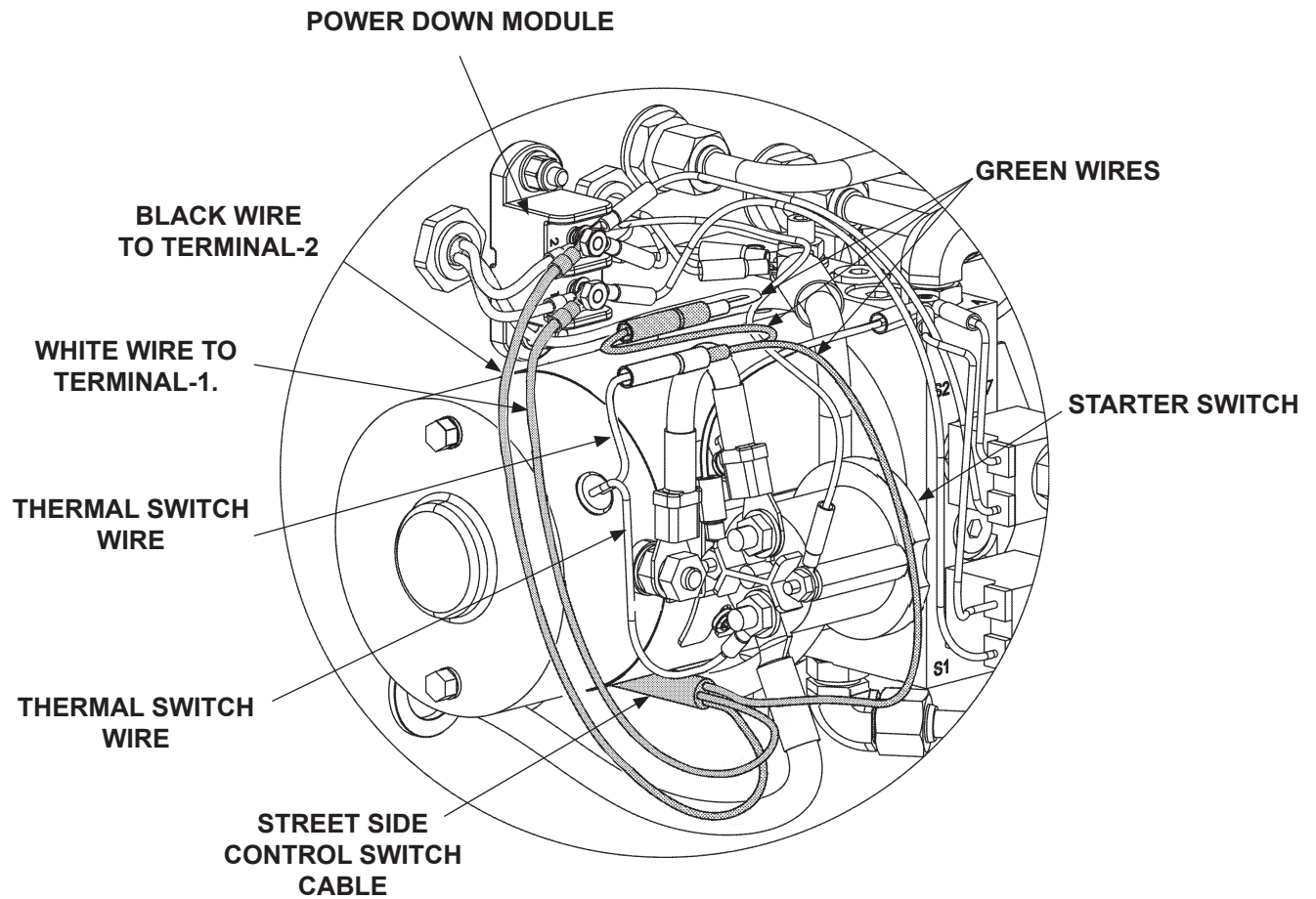
8. Reconnect ground cable to pump mounting bracket (**FIG. 6-1**).

9. Bolt on the pump cover as shown in **FIG. 6-2**.

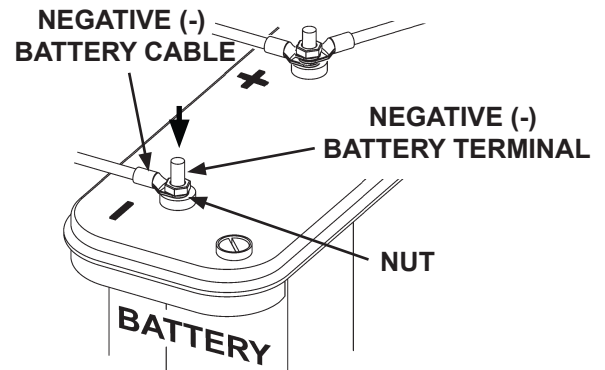


BOLTING / UNBOLTING PUMP COVER

FIG. 6-2

**CONTROL SWITCH WIRING CONNECTIONS****FIG. 7-1**

10. Reconnect battery to lift gate. Remove nut from negative (-) battery terminal (FIG. 8-1). Connect negative (-) battery cable to the negative (-) battery terminal (FIG. 8-1). Install and tighten nut.



RECONNECTING POWER
FIG. 8-1

11. Verify street side control works correctly. Push control switch **UP** to raise platform (FIG. 8-2). Then, push control switch **DOWN** (FIG. 8-2) to lower platform to the ground.

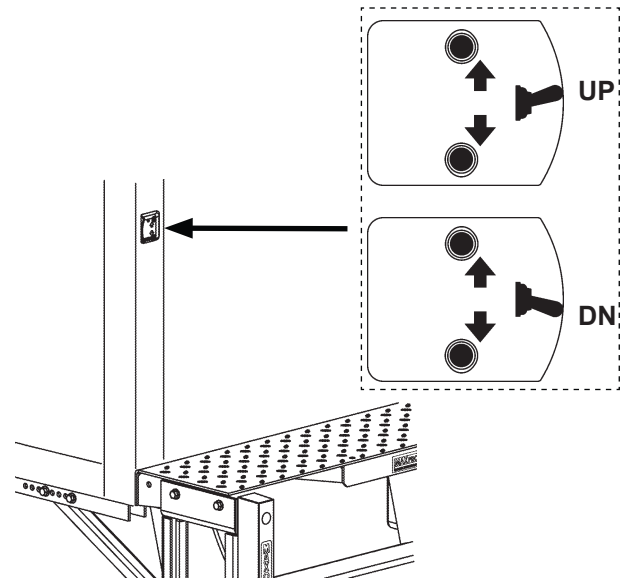


FIG. 8-2

12. Attach decals (Kit items) to street side control switch and truck body (FIG. 8-3.)

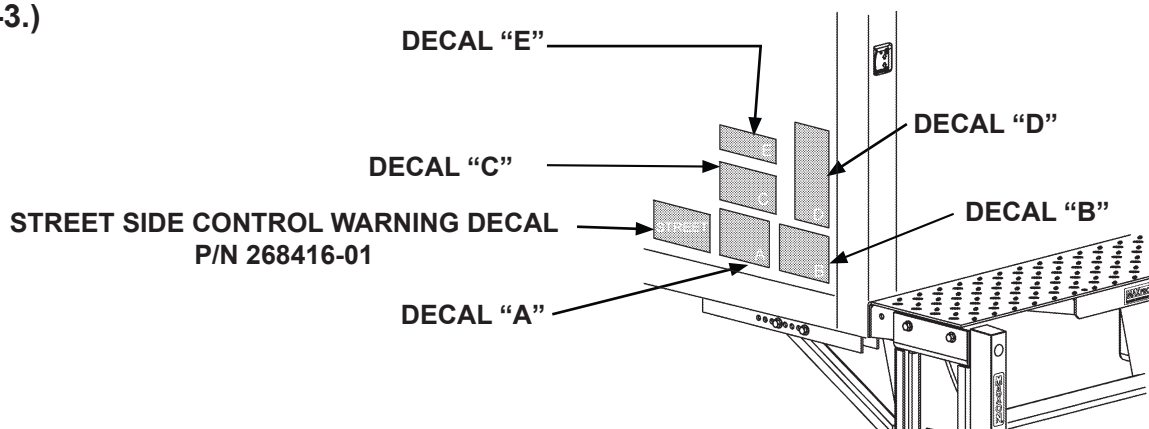


FIG. 8-3