

MAXON[®] **MOBILITY[™]**

Maintenance Manual Contains:

Warranty Information

Safety Summary

Trouble Shooting Guide

Lift Specifications

Lift Terminology

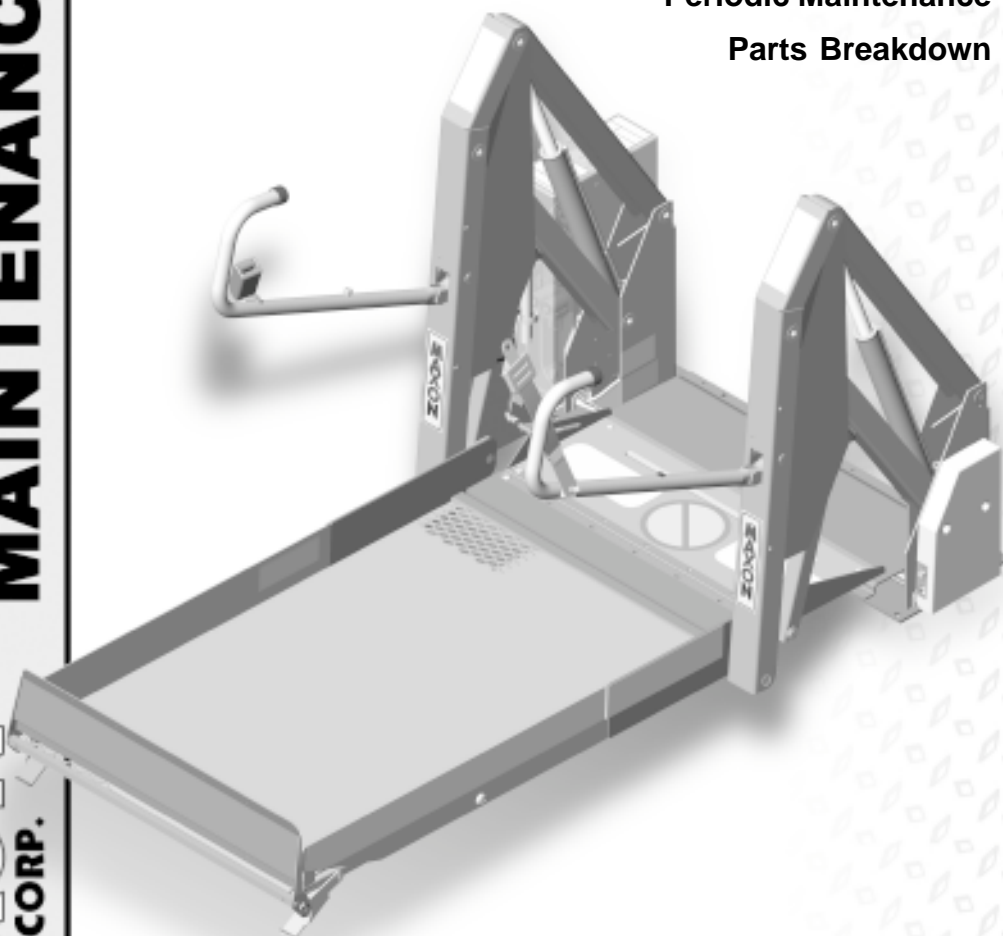
Decals and Decal Placement

Periodic Maintenance

Parts Breakdown

WHEELCHAIR LIFT MAINTENANCE MANUAL

MAXON[®]
LIFT CORP.



**M-00-38
REV. C
JUNE 2003**

MAXON[®]

LIFT CORP.

**11921 Slauson Ave.
Santa Fe Springs, CA. 90670**

CUSTOMER SERVICE:

TELEPHONE (562) 464-0099 TOLL FREE (800) 227-4116

FAX: (888) 771-7713

NOTE: For latest version Manuals (and replacements), download Manuals from Maxon's website at www.maxonlift.com.

WARRANTY POLICY & PROCEDURE

NEW LIFT WARRANTY

Term of Warranty: 3 Years from In-Service Date

Type of Warranty: Full Parts and Labor

MAXON agrees to replace any components which are found to be defective during the first 3 years of service, and will reimburse for labor based on MAXON Mobility's Warranty Flat Rate Labor Schedule. All claims for warranty must be received within 30 Days of the repair date, and include the following information:

1. Lift Model Number
2. Lift Serial Number
3. Detailed Description of Problem
4. Corrective Action Taken, and Date of Repair.
5. Parts used for Repair, Including MAXON Part Number(s).
6. MAXON RMA # and/or Authorization # if applicable (see below).
7. Person contacted at MAXON if applicable.

REPLACEMENT PART WARRANTY

Term of Warranty: 1 Year from Date of Purchase

Type of Warranty: Part Replacement and Replacement Labor.

MAXON will guarantee all returned genuine MAXON replacement parts upon receipt, and inspection of parts and purchase invoice. All Warranty repairs must be performed by an authorized MAXON warranty distributor.

Major components (i.e. hydraulic pumps, cylinders, valves or requested part by Maxon) must be returned, freight prepaid, prior to the claim being processed. To ensure timely processing of these warranty claims, an RMA (Returned Merchandise Authorization) number must be obtained from MAXON's Warranty Department prior to the return of any defective part. Defective Parts must be returned within 60 days of the claim date for consideration to:

Warranty Department, MAXON Lift Corp.

16205 DISTRIBUTION WAY CERRITOS CA 90703-2329

MAXON's warranty policy does not include the reimbursement for travel time; towing; vehicle rental; service calls; fabrication of parts which are available from MAXON; oil; defects due to misuse or abuse; loss of income due to downtime.

MAXON's Flat Rate Labor Schedule times takes into consideration time required for diagnosis of problem.

Warranty and Technical Information is available by calling MAXON's Customer Service Department.

TABLE OF CONTENTS

SAFETY SUMMARY	PAGE 6
SPECIFICATIONS	PAGE 7
LIFT TERMINOLOGY	PAGE 8
MAINTENANCE SECTION.....	PAGE 10
PERIODIC MAINTENANCE CHECKLIST	PAGE 10
PERIODIC MAINTENANCE CHECKLIST REFERENCE	PAGE 11
ADJUSTMENTS	PAGE 12
LIMIT SWITCH ADJUSTMENT	PAGE 12
PLATFORM TILT ADJUSTMENT	PAGE 13
PRESSURE SWITCH ADJUSTMENT	PAGE 14
PARTS EXPLODED VIEWS.....	PAGE 16
WL-6A-A WHEELCHAIR LIFT	PAGE 17
LEFT HAND VERTICAL TRAVELING ARM ASSEMBLY	PAGE 18
RIGHT HAND VERTICAL TRAVELING ARM ASSEMBLY	PAGE 20
MAIN FRAME	PAGE 22
PLATFORM ASSEMBLY	PAGE 24
HYDRAULIC COMPONENTS	PAGE 26
ELECTRICAL COMPONENTS	PAGE 28
HAND CONTROL ASSEMBLY	PAGE 30
DECALS AND DECAL PLACEMENT	PAGE 31

TABLE OF CONTENTS - Continued

SCHEMATICS	PAGE 35
HYDRAULIC SCHEMATIC	PAGE 36
ELECTRICAL SCHEMATIC	PAGE 37
TROUBLE SHOOTING GUIDE	PAGE 38

SAFETY SUMMARY

Comply with the following **WARNINGS** and safety precautions while maintaining the Wheel-chair Lift. See Operator's Manual M-00-37 for operating safety requirements.

WARNING

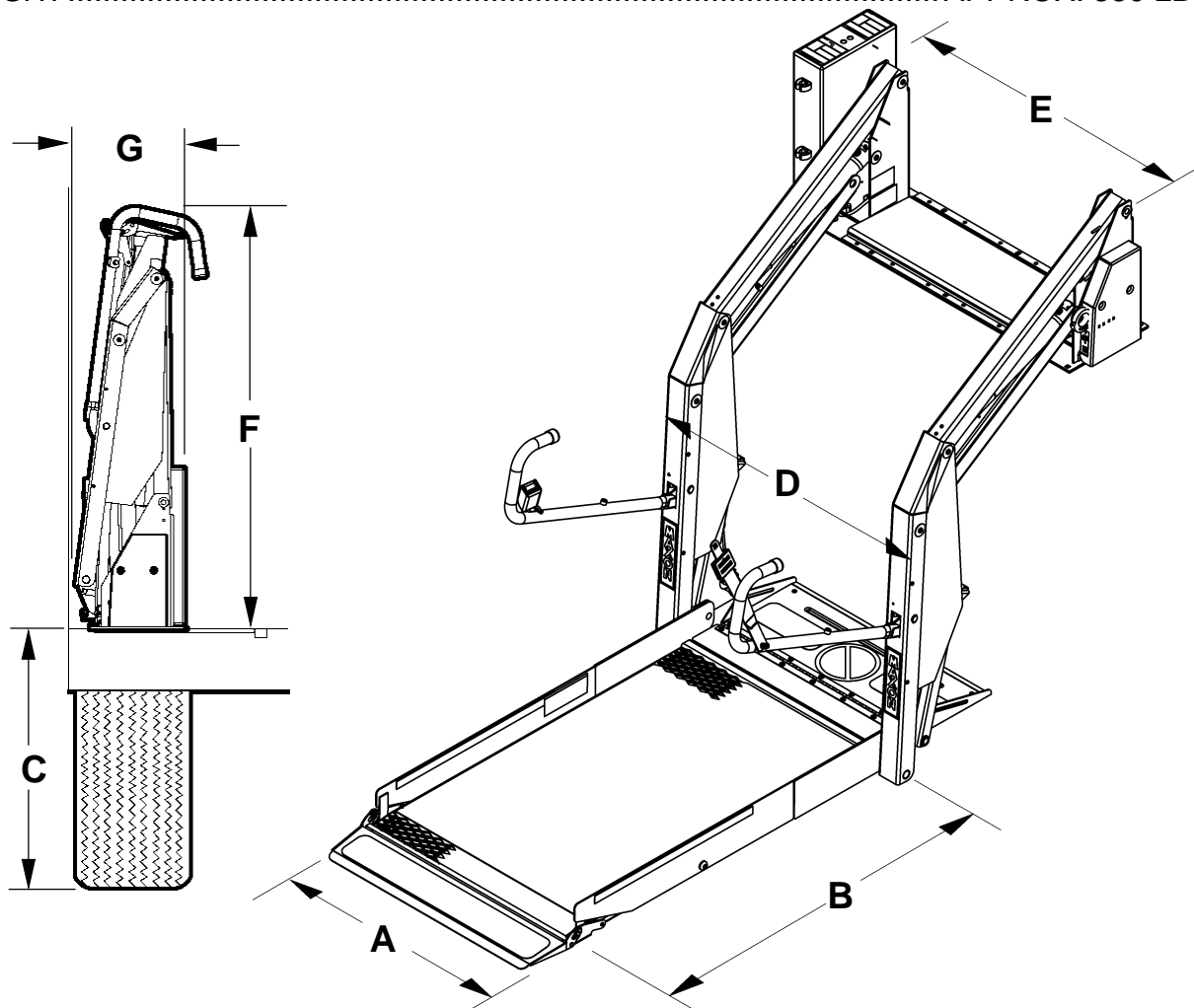
1. Read and understand the instructions in this **Maintenance Manual** before performing maintenance on the Lift.
2. Before operating the Lift, read and understand the operating instructions contained in **Operator's Manual M-00-37**.
3. Comply with all **WARNING** and instruction decals attached to the Lift.
4. Consider the safety and location of bystanders and location of nearby objects when operating the Lift. Stand to one side of platform while operating the Lift.
5. Do not allow untrained persons to operate the Lift.
6. Do not stand under, or allow obstructions under the Platform when lowering the Lift. **Be sure your feet are clear of the Lift.**
7. **Keep fingers, hands, arms, legs, and feet clear of moving Lift parts (and platform edges) when operating this unit.**
8. **Disconnect vehicle battery power** when repairing or servicing Lift.
9. Wear appropriate safety equipment, such as protective eyeglasses, faceshield and clothing while performing maintenance on the Lift and handling the vehicle battery. Debris from cutting and drilling, and contact with battery acid, may injure eyes and exposed skin.
10. Be careful working by a vehicle battery. Make sure the work area is well ventilated and there are no flames or sparks near the battery. Never lay objects on the battery that can short the terminals together. If battery acid gets in your eyes, immediately seek first aid. If acid gets on your skin, immediately wash it off with soap and water.
11. If an emergency situation arises (vehicle or Lift) while operating the Lift, release the hand control switch and the Lift will stop.
12. A correctly installed Lift operates smoothly and reasonably quiet. The only noticeable noise, during Lift operation, is from the Pump Unit while the Platform is raised and folded. Listen for scraping, grating and binding noises and correct the problem before continuing to operate the Lift.
13. Keep decals clean and legible. If decals are defaced or missing, replace them. **Free re-placement decals** are available from **Maxon Customer Service**.
14. Use only **Maxon Authorized Parts** for replacement parts. Order replacement parts from:

MAXON LIFT CORP. Customer Service
11921 Slauson Ave., Santa Fe Springs, CA 90670
Phone: (800) 227-4116
Email: partssales@maxonlift.com

Provide the Lift model and serial number information with your order.

SPECIFICATIONS

POWER ELECTRO-HYDRAULIC POWER UNIT
PUMP RATING 12 VOLTS DC 65 AMP. AVG./CYCLE, 1250 PSI
24 VOLTS DC 33 AMP. AVG./CYCLE, 1250 PSI
HYDRAULIC CYLINDERS 2, 1.5", POWER-UP/GRAVITY-DOWN
RATED LOAD CAPACITY 800LBS
MANUAL BACKUP HAND PUMP/RELIEF VALVE
WEIGHT APPROX. 350 LBS.



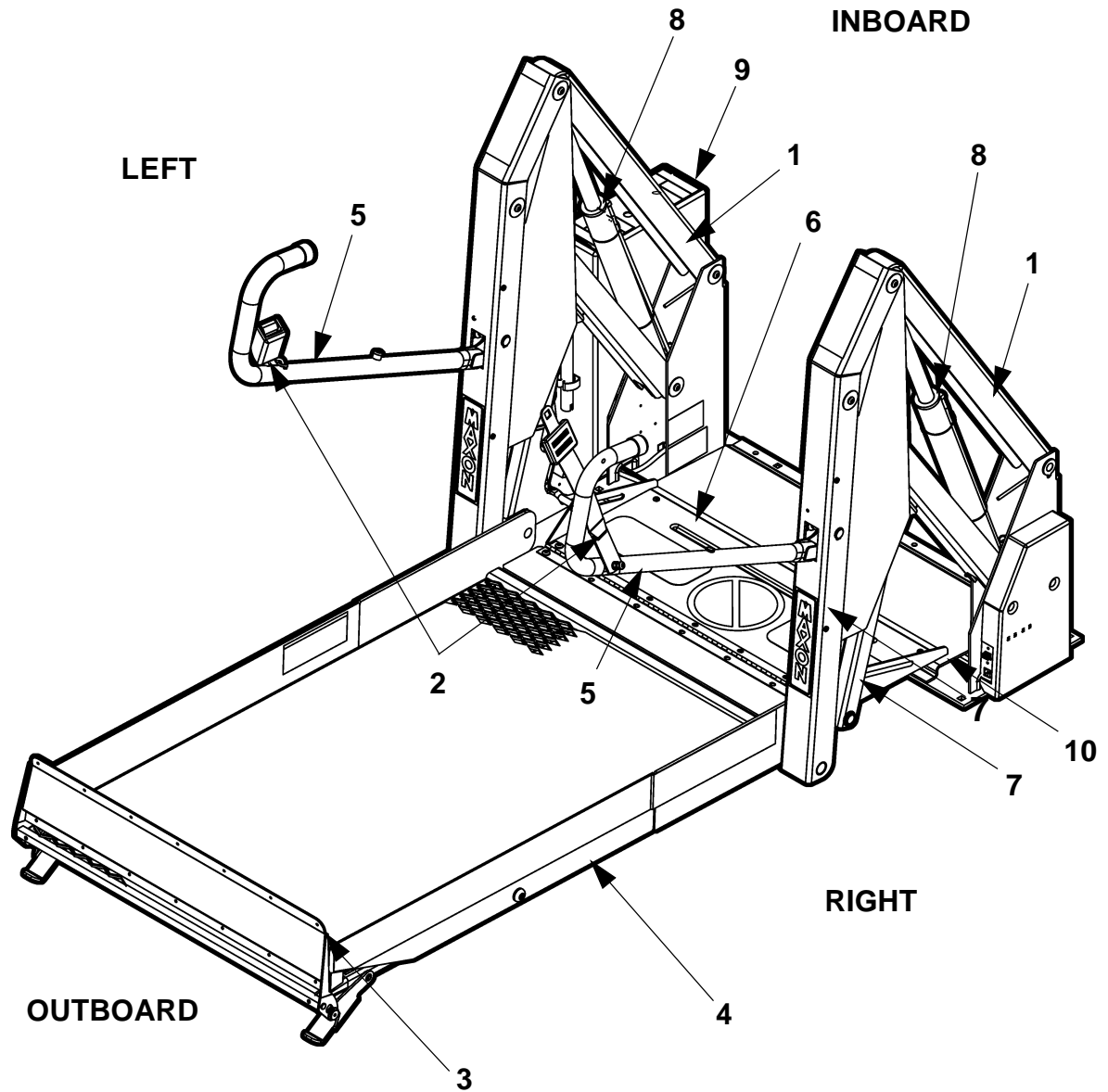
	A	B	C	D	E	F	G
MODELS	USABLE PLATFORM WIDTH	USABLE PLATFORM LENGTH	FLOOR-TO- GROUND TRAVEL	TRAVELING FRAME WIDTH	OVERALL WIDTH	HEIGHT (FOLDED)	INSTALLATION DEPTH (FOLDED)
WL-6A-A0LLS	30	53	42	38	45	55	14
WL-6A-A1LLS	33	53	42	41	48	55	14
WL-6A-A0HLS	30	53	48	38	45	57	14
WL-6A-A1HLS	33	53	48	41	48	57	14

LIFT TERMINOLOGY

Lift references used throughout this manual are defined below and illustrated on opposite page.

ITEM	NAME	DESCRIPTION
1	TRAVELING ARM ASSY.	(Left/Right) Upper and Lower Links connecting each Vertical Arm on Platform Assembly to Base Assembly.
2	OCCUPANT RESTRAINT	Occupant Restraint is a belt that acts as a barrier to keep the Wheelchair from rolling off the Platform. Belt must be engaged to start operation.
3	OUTBOARD ROLLSTOP ASSY.	Barrier to prevent the Wheelchair from rolling off of the Platform. Also provides entry/exit ramp for platform.
4	PLATFORM ASSEMBLY	Holds the Wheelchair and Occupant during "UP/DOWN" operation between vehicle floor and the ground.
5	HANDRAIL (LH/RH)	Provides a hand hold for the Lift occupant.
6	INBOARD ROLLSTOP ASSY.	Barrier to prevent the Wheelchair from rolling off inboard side of platform. Also, provides bridge between Lift Platform and Vehicle Door Threshold.
7	KNUCKLE ASSEMBLY	(Left/Right) Linkage which folds the Platform.
8	HYDRAULIC CYLINDER	(Left/Right) Telescoping Steel Tube that folds and unfolds the lift, and moves the lift up and down.
9	HYDRAULIC POWER UNIT	Contains hydraulic pump, fluid lines and controls to operate the hydraulic cylinders.
10	BASE ASSEMBLY	Assembly that mounts Lift on the vehicle floor.

LIFT TERMINOLOGY



MAINTENANCE SECTION

PERIODIC MAINTENANCE CHECKLIST

☐ Semi-Annual

- ☐ Visually check the Platform Hinge Pins for excessive wear or broken welds. For parts replacement, see the Assembly Breakdown Drawings.

☐ Quarterly

- ☐ Check all Hinge Pins for excessive wear or broken welds. For parts replacement, see the Assembly Breakdown Drawings.
- ☐ Check the hydraulic fluid level in the Pump Reservoir, with Lift at ground level (**see FIG.1**). The fluid used in the system is **Grade ISO-(32)** hydraulic fluid.
- ☐ Check Hoses and Fittings for chafing and leaks. Replace if necessary.
- ☐ Check the electrical wiring for worn insulation, and the terminals for corrosion and secure fit.
- ☐ Check all fasteners (nuts, bolts, screws & rivets) for tightness. Also, check cotter pins, clevis pins, snap ring pins & retaining rings for noticeable wear and damage.
- ☐ Check that all Warning Decals are in place and legible.

☐ Monthly (or as required)

- ☐ Clean Lift with mild detergent and water.
- ☐ Visually check the complete Lift for excessive wear, worn parts or broken welds.
- ☐ Lubricate Lift pivot points (**FIG.1**).

☐ Daily (performed by lift attendant- see Operator Manual M-00-37)

PERIODIC MAINTENANCE CHECKLIST REFERENCE

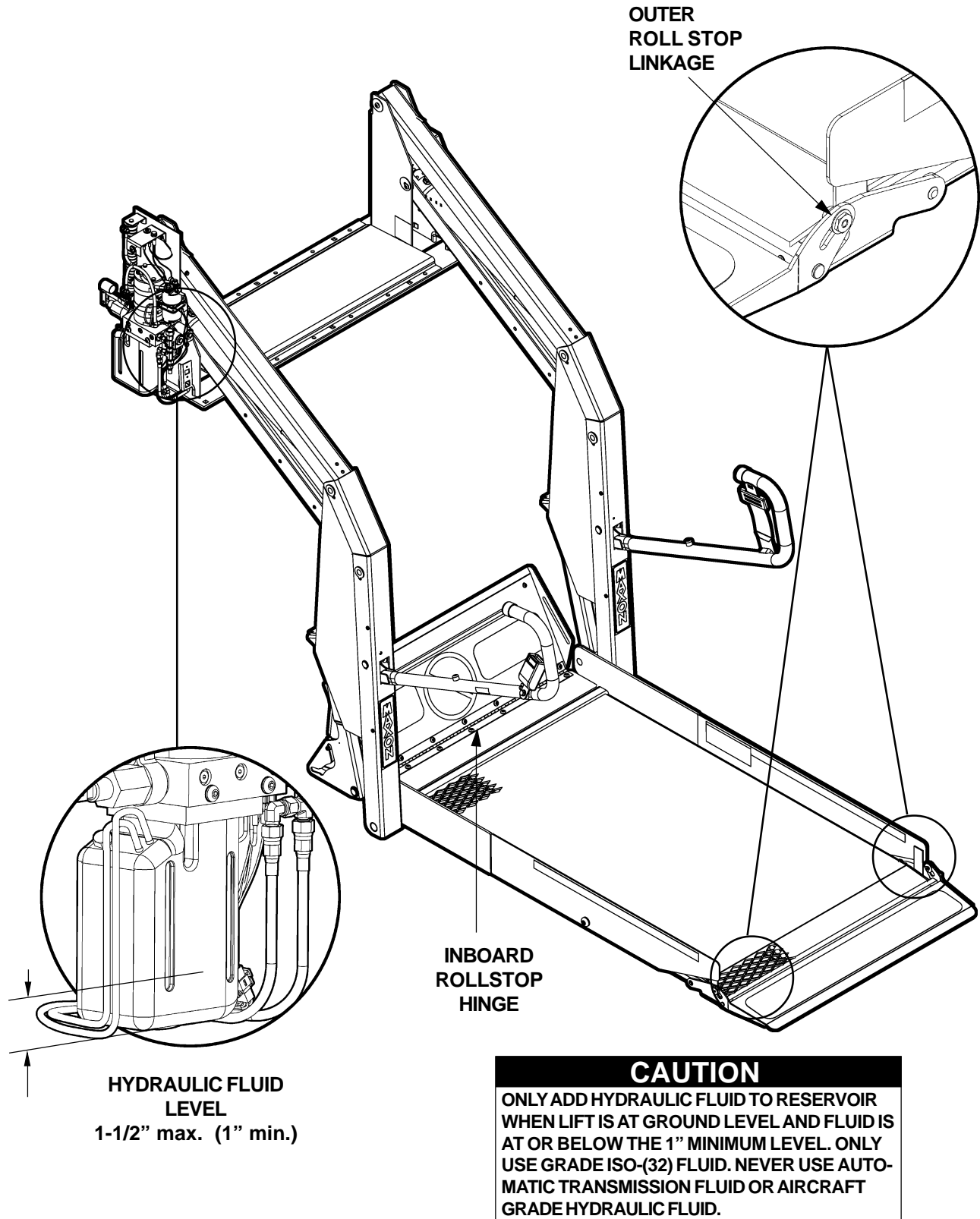


FIG. 1

ADJUSTMENTS

LIMIT SWITCH ADJUSTMENT

See the Limit Switch Adjustment Diagram (**FIG. 2**) for correct limit switch adjustment. Follow the steps in the chart below to correctly adjust Lift functions - **UNFOLD**, **UP** (raising) and **FOLD**.

Need Technical Support?

- Call or fax **Customer Service** (see **Safety Summary** page for phone numbers).
- Send Email to **technicalsupport@maxonlift.com**.

NOTE: When loosening the cutoff adjustment screw on the **UP** cutoff switch or **UNFOLD** cutoff switch, apply enough pressure to the screw so the block and screw will move properly (not just the screw).

COMPONENT	ADJUSTMENT PROCEDURE	CHECK	ACTION
UNFOLD CUTOFF SWITCH & DOWN ARMING SWITCH (VEHICLE FLOOR LEVEL)	Adjust lower limit switch so that Lift stops just below the UP cutoff. This gives the necessary overlap to avoid dead spots.	1. Lift stops low. 2. Lift stops high.	1. Turn screw counter-clockwise to raise. 2. Turn screw clockwise to lower.
UP CUTOFF SWITCH & FOLD ARMING SWITCH (VEHICLE FLOOR LEVEL)	Adjust upper limit switch so that Lift stops just as the first knuckle actuator pad touches the underside of the lower parallel arm.	1. Lift stops low. 2. Lift stops high.	1. Turn screw counter-clockwise to raise. 2. Turn screw clockwise to lower.

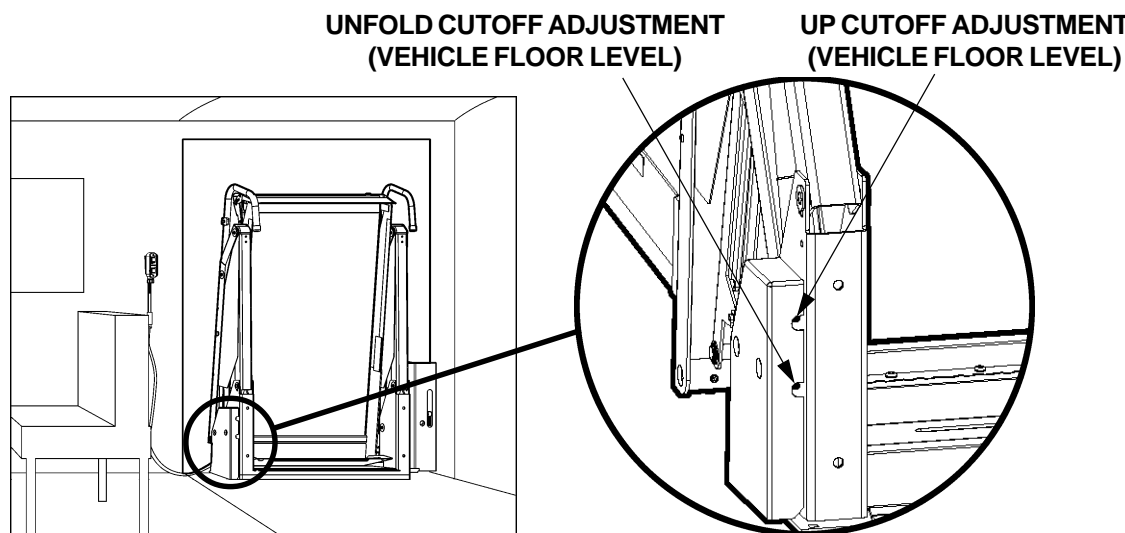


FIG. 2

PLATFORM TILT ADJUSTMENT

1. The platform tilt adjustment is crucial for proper platform rollstop operation. However, this angle cannot be adjusted at the factory. Factors such as vehicle floor height, Lift installation angle, and stiffness of the vehicle springs may vary the installation geometry.

NOTE: For the following procedure, ground level is the point where platform (**FIG. 3**) rollstop first reaches full deployment on the ground.

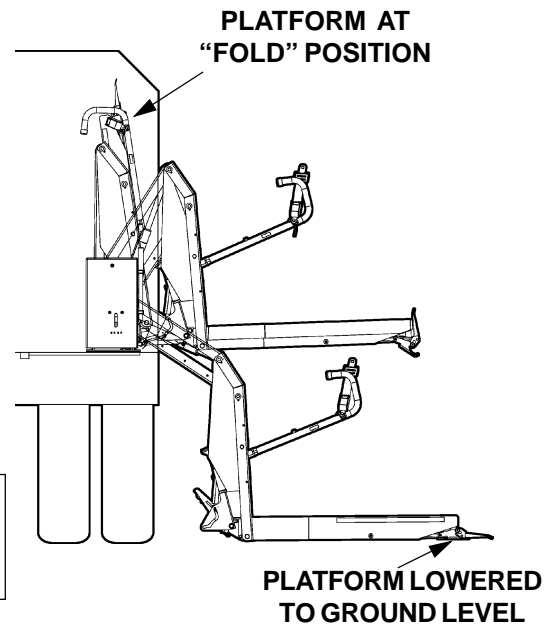
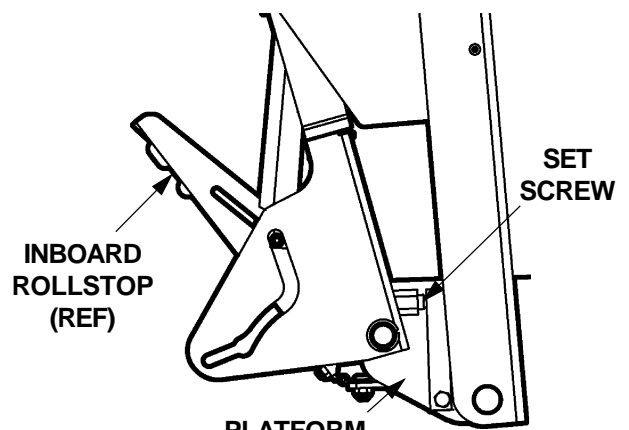


FIG. 3

2. Lower platform to ground level (**FIG. 3**). Measure the distance between the inboard edge of the platform and the ground. Distance should be 3/4" to 1".

3. Be sure to adjust set screws (**FIG. 4**) equally on both sides of platform to ensure proper leveling. of platform. After platform is properly leveled, apply Blue Loctite thread-locking compound to both set screws.



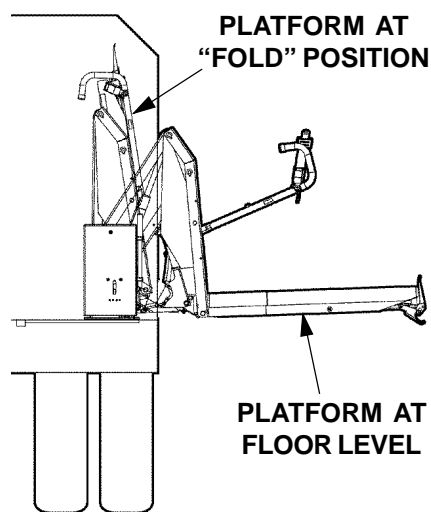
PLATFORM ADJUST SET SCREW (LH SIDE OF PLATFORM SHOWN)

FIG. 4

PRESSURE SWITCH ADJUSTMENT

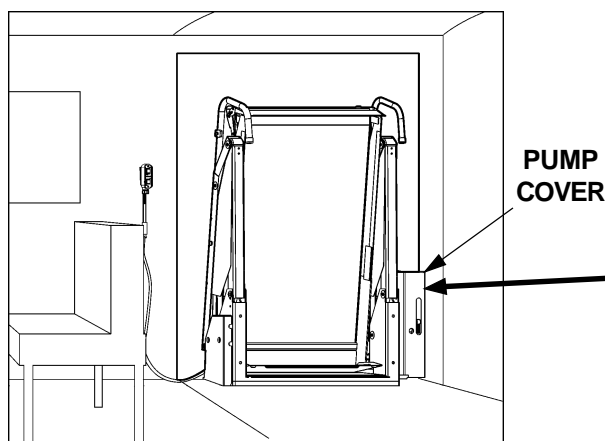
NOTE: Before doing this procedure, make sure vehicle battery is fully charged to +12.6 VDC, minimum. An undercharged battery can make Lift operate incorrectly.

1. Use the Hand Control to **UNFOLD** platform to vehicle floor level (**FIG. 5**). **FOLD** platform (**FIG. 5**). See if platform hesitates while folding or if it fails to fold.

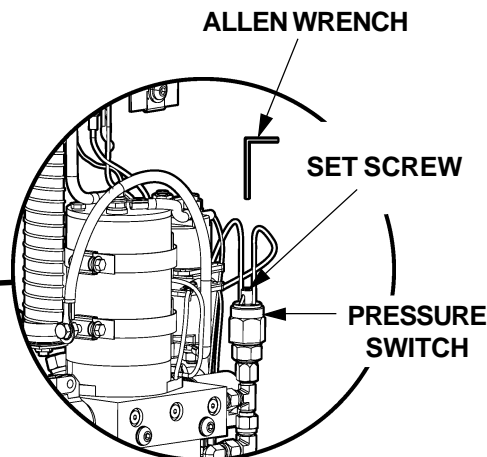


FOLDING & UNFOLDING PLATFORM
FIG. 5

2. If platform hesitates or fails to fold, do the following. Remove Pump Cover (**FIG. 6A**). Turn the Pressure Switch set screw clockwise a little at a time while pushing **FOLD** Switch on Hand Control. Stop turning set screw when platform folds without hesitating.



LIFT VIEWED FROM INSIDE VEHICLE
(POWER UNIT ON LH SIDE)
FIG. 6A



ADJUSTING PRESSURE SWITCH
FIG. 6B

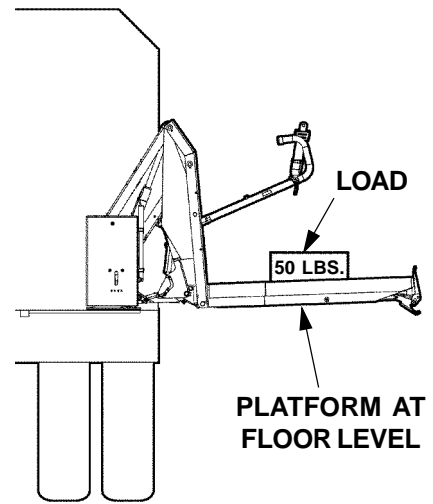
MAXON

11921 Slauson Ave. Santa Fe Springs, CA. 90670 (800) 227-4116 FAX (888) 771-7713

3. Next, **UNFOLD** platform to vehicle floor level (**FIG. 7**). Place a 50 pound load on the center of platform. Try to **FOLD** platform using Hand Control. Platform should not fold.

4. If platform starts folding with the 50 pound load, release **FOLD** Switch to stop platform. Use the Hand Control to **UNFOLD** platform to vehicle floor level (**FIG. 7**).

5. Turn the Pressure Switch set screw (**FIG. 6B**) counter-clockwise a little at a time. Try to **FOLD** platform using Hand Control. Release **FOLD** Switch if platform starts to fold. Then, **UNFOLD** platform to vehicle floor level. Repeat this step until platform does not fold with the 50 pound load.



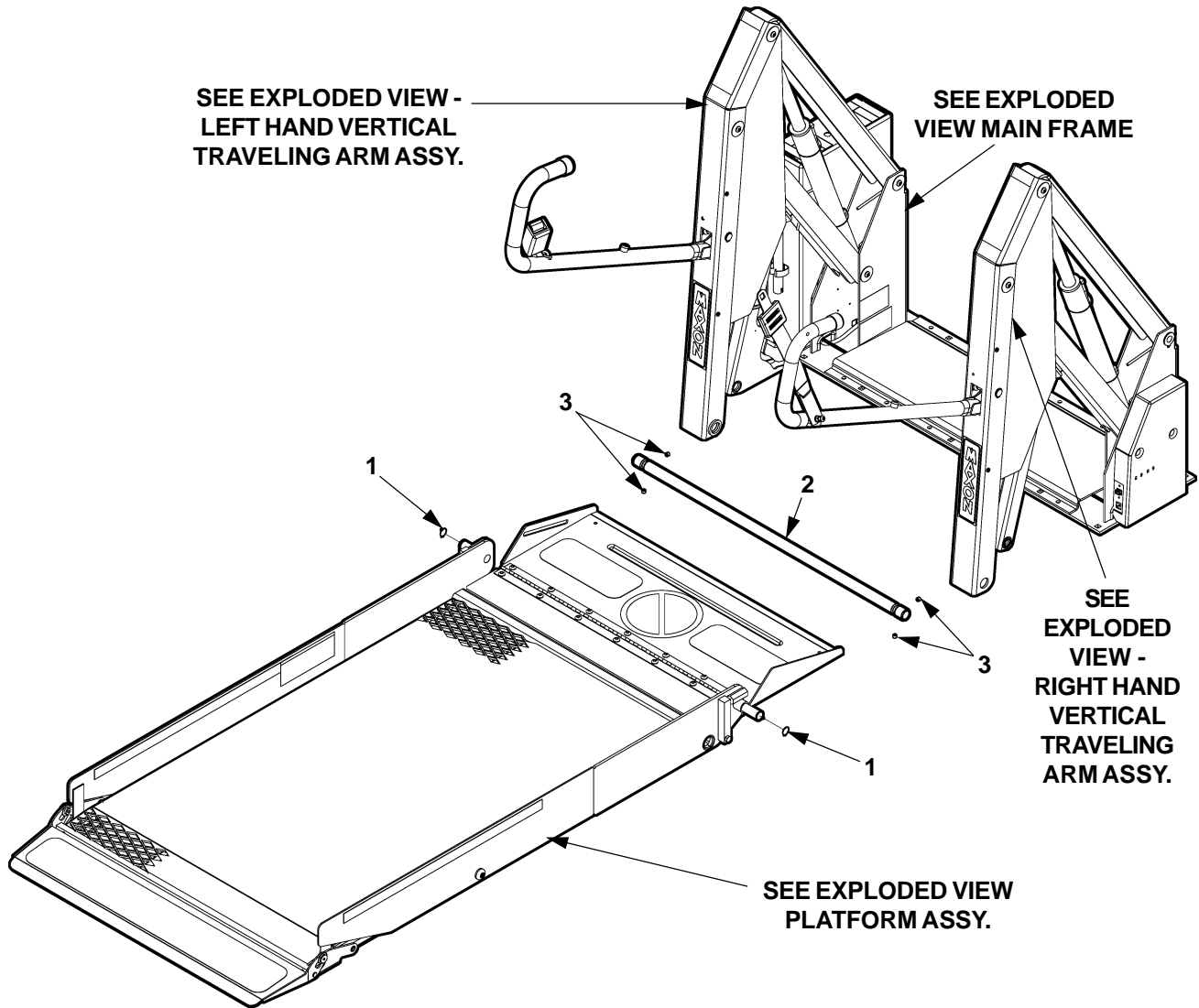
PLATFORM WITH 50 LB. LOAD
FIG. 7

MAXON®

11921 Slauson Ave. Santa Fe Springs, CA. 90670 (800) 227-4116 FAX (888) 771-7713

PARTS EXPLODED VIEWS

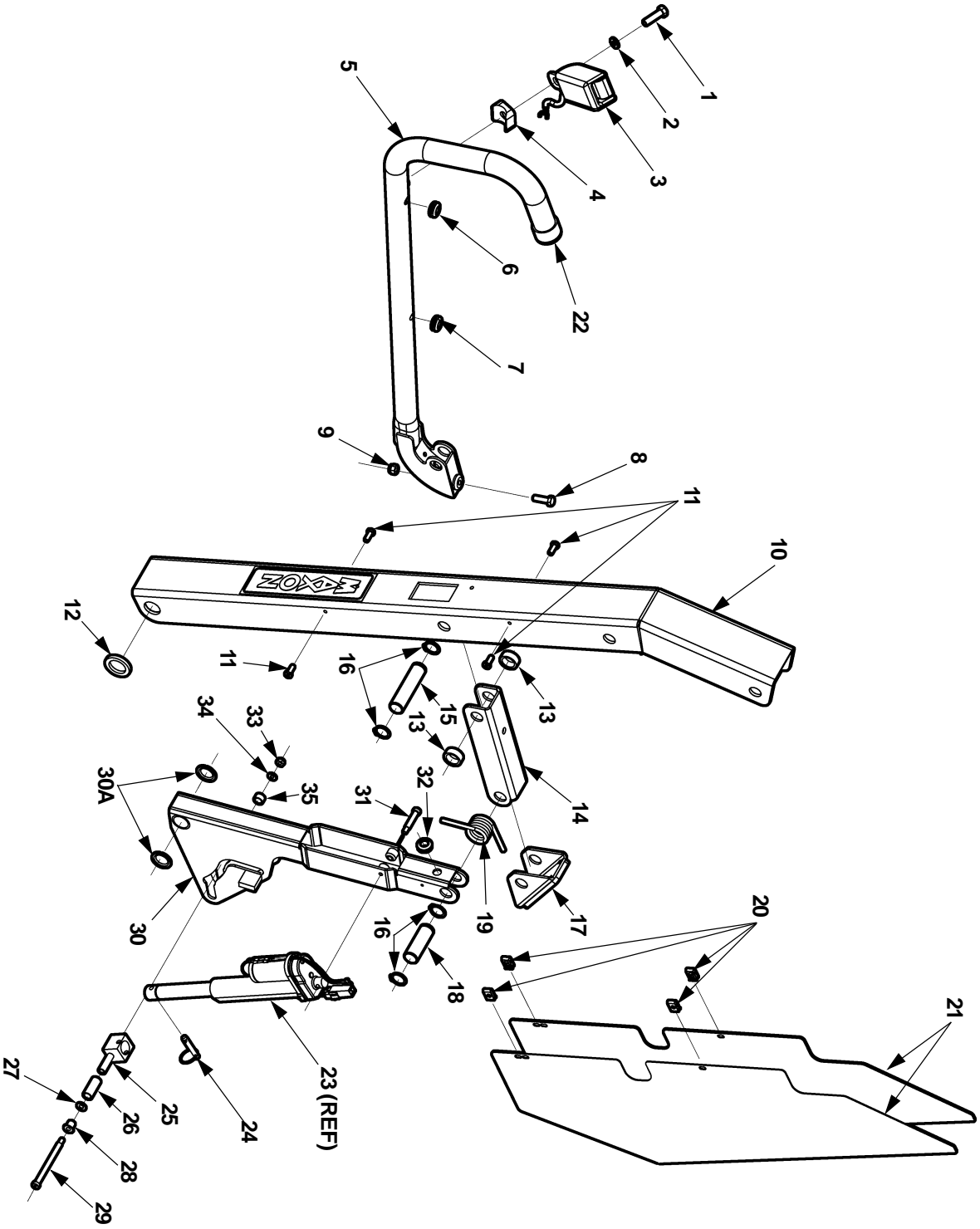
WL-6A-A WHEELCHAIR LIFT



ITEM	QTY.	PART NO.	DESCRIPTION
1	2	905005	RETAINING RING, 3/4"
2	1		SHAFT, 36.5" LG.
			SHAFT, 39.5" LG.
3	4		SET SCREW, 3/8"-16 X 3" LG.

FOR REFERENCE ONLY

LEFT HAND VERTICAL TRAVELING ARM ASSEMBLY

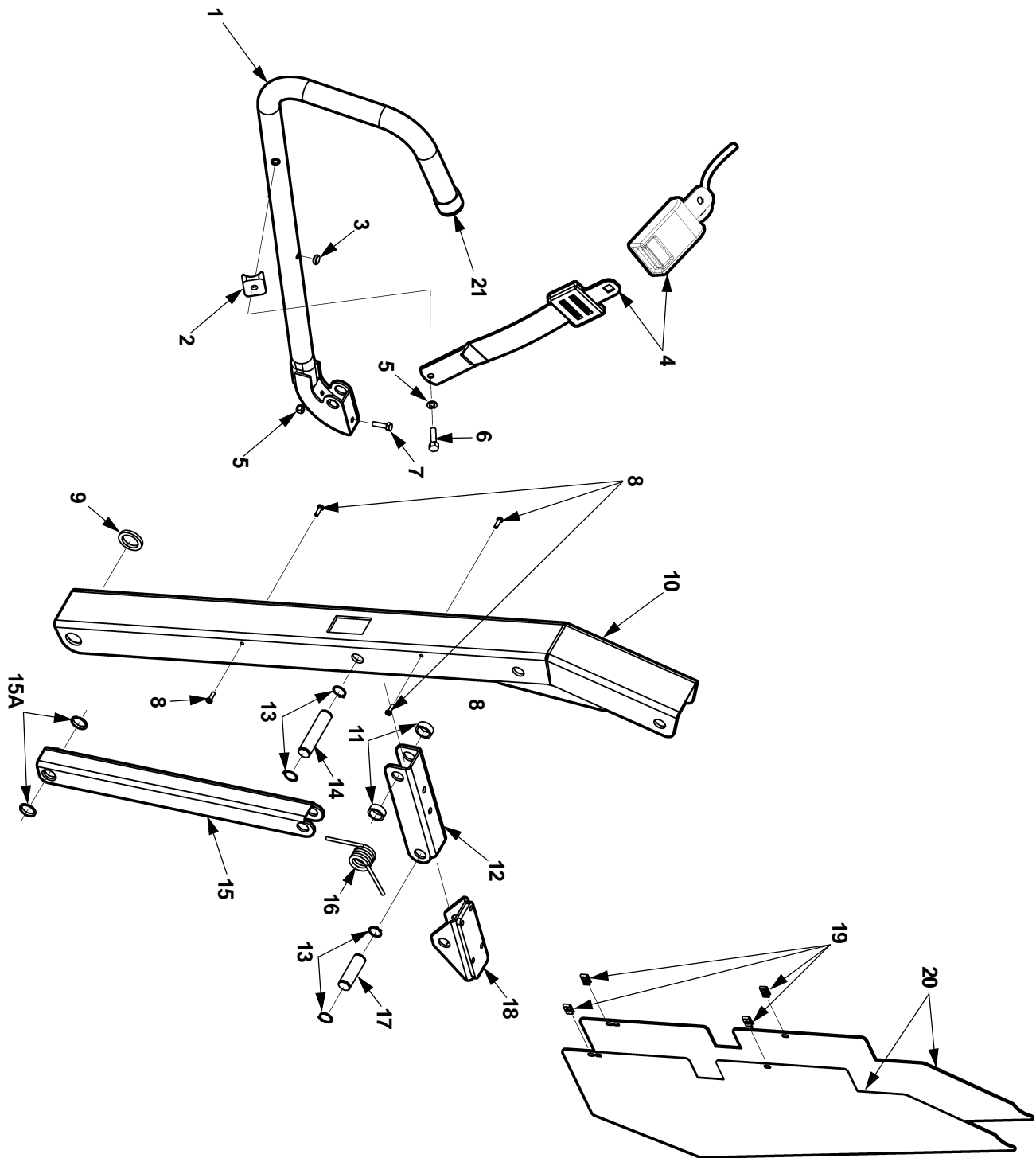


LEFT HAND VERTICAL TRAVELING ARM ASSEMBLY

ITEM	QTY.	PART NO.	DESCRIPTION
1	1		CAP SCREW, 5/16"-18 X 1-3/4" LG.
2	1		WASHER, 5/16"
3	1		SAFETY BELT (SEE RH VERTICAL TRAVELING ARM ASSY)
4	1	261425	PLATE, MOUNT SEATBELT
5	1	265070-01	HANDRAIL ASSEMBLY LH (PUMP ON LEFT SIDE)
		265070-03	HANDRAIL ASSEMBLY LH (PUMP ON RIGHT SIDE)
6	1		GROMMET, BUSHING SNAP
7	1	265084-01	BUMPER BUTTON
8	1		BOLT, 1/4"-20 X 1" LG.
9	1		NUT, NYLON 1/4"-20
10	1	265003-01	VERTICAL ARM (42" FLOOR HEIGHT)
		265003-03	VERTICAL ARM (48" FLOOR HEIGHT)
11	4		SCREW, 3/16"-24 X 5/8" LG.
12	1		SPACER, SHIM
13	2	261280	SPACER, KNUCKLE LINK
14	1		BRACKET, KNUCKLE SUPPORT
15	1	265037	PIN, SNAP RING, 3-5/16" LG.
16	4	905005	RING, RETAINER
17	1	266256	SADDLE & PAD ASSEMBLY
18	1	265036	PIN, SNAP RING, 2-3/8" LG.
19	1	265096	SPRING, KNUCKLE ACTUATOR
20	4	905002	J-NUT, 10-24
21	2	261269	SHIELD, PINCH POINT (42" FLOOR HEIGHT)
		261269-01	SHIELD, PINCH POINT (48" FLOOR HEIGHT)
22	1	905019	CAP, END HANDRAIL
23	1		ACTUATOR ASSY (SEE ELECTRICAL COMPONENTS)
24	1	904701	PIN, SELF LOCKING
25	1	266228	BRACKET, CYL ROD END
26	1	266229-02	ROLLER, 1-1/4" LG
27	1	902000-2	WASHER, FLAT 1/4 X 1/32
28	1	266230-01	ROLLER, FLANGED
29	1	900060-14	SCREW, SHOULDER 1/4" DIA. X 3-1/4"
30	1	266251-01	VERTICAL ARM KNUCKLE SUPPORT, 42", LH
30A	2	265017	BEARING, SELF LUBE
31	1	900060-7	SCREW, SHOULDER, 10-24, 1/4" X 1-1/4" LG.
32	1	263795	GROMMET, 3/8" X 1/2"
33	1	901003	NUT, NYLON, 10-24
34	1	902000-5	WASHER, FLAT #10
35	1	266229-01	ROLLER, 5/16" LG

REFERENCE PARTS

RIGHT HAND VERTICAL TRAVELING ARM ASSEMBLY



RIGHT HAND VERTICAL TRAVELING ARM ASSEMBLY

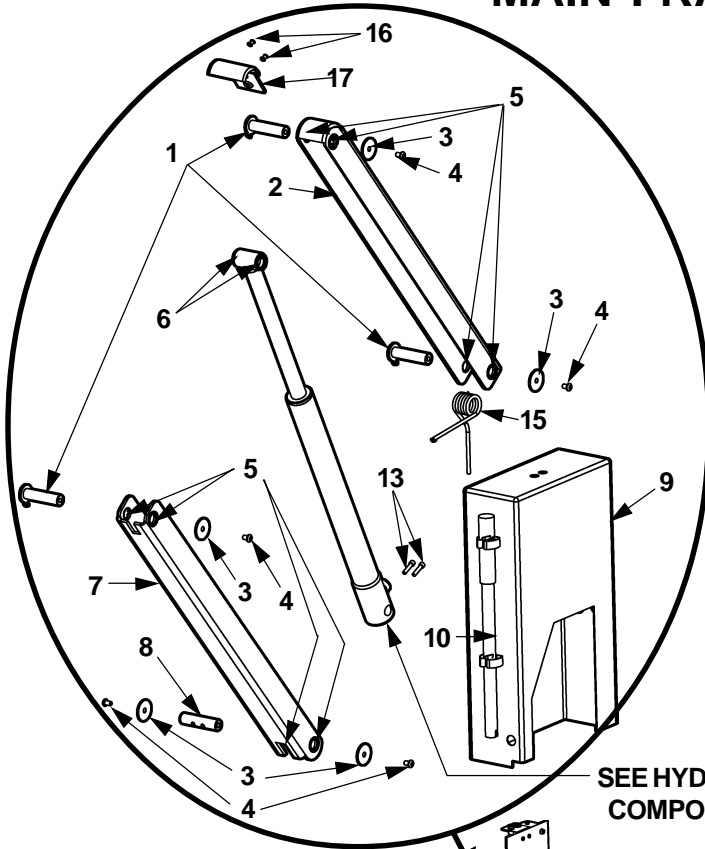
ITEM	QTY.	PART NO.	DESCRIPTION
1	1	265070-02	HANDRAIL ASSEMBLY RH
2	1	261425	PLATE, MOUNT SEATBELT
3	1	265084-01	BUMPER BUTTON
4	1	265006	SAFETY BELT
5	1		WASHER, 5/16"
6	1		CAP SCREW, 5/16"-18 X 1-3/4" LG.
7	1		BOLT, 1/4"-20 X 1" LG.
8	4		SCREW, 3/16"-24 X 5/8" LG.
9	1		SPACER, SHIM
10	1	265003-02	VERTICAL ARM (42" FLOOR HEIGHT)
		265003-04	VERTICAL ARM (48" FLOOR HEIGHT)
11	2	261280	SPACER, KNUCKLE LINK
12	1		BRACKET, KNUCKLE SUPPORT
13	2	905005	RING, RETAINER
14	1	265037	PIN, SNAP RING, 3-5/16"
15	1		VERTICAL ARM KNUCKLE SUPPORT (42" FLOOR HEIGHT)
			VERTICAL ARM KNUCKLE SUPPORT (48" FLOOR HEIGHT)
15A	2	265017	BEARING, SELF LUBE
16	1	265096	SPRING, KNUCKLE ACTUATOR
17	1	265036	PIN, SNAP RING, 2-3/8"
18	1	266256	SADDLE & PAD ASSEMBLY
19	4	905002	J-NUT, 10-24
20	2	261269	SHIELD, PINCH POINT (42" FLOOR HEIGHT)
		261269-01	SHIELD, PINCH POINT (48" FLOOR HEIGHT)
21	1	905019	CAP, END HANDRAIL

REFERENCE PARTS

MAXON®

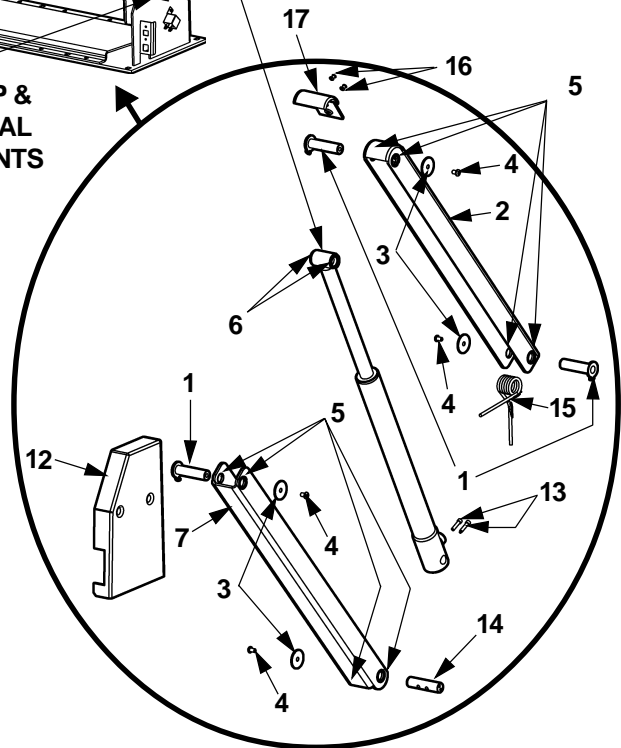
11921 Slauson Ave. Santa Fe Springs, CA. 90670 (800) 227-4116 FAX (888) 771-7713

MAIN FRAME



SEE HYDRAULIC
COMPONENTS

SEE PUMP &
ELECTRICAL
COMPONENTS

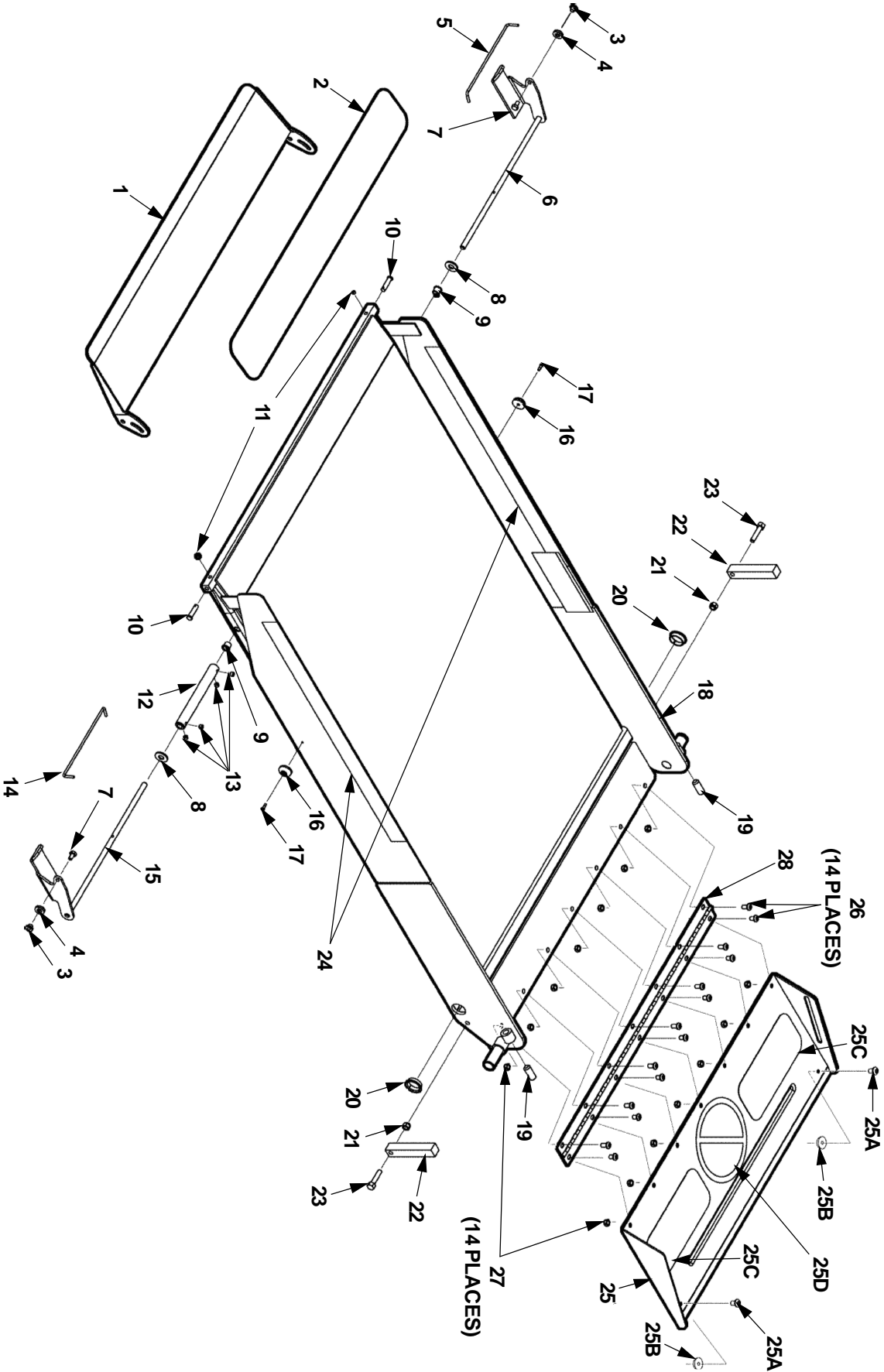


MAIN FRAME

ITEM	QTY.	PART NO.	DESCRIPTION
1	6	265035	PIN, RETAINER
2	2	265018-01	UPPER ARM (42" FLOOR HEIGHT)
		265018-02	UPPER ARM (48" FLOOR HEIGHT)
3	9		WASHER
4	9		BUTTON SCREW, 5/16-18 X 1/2"
5	20	265017	BEARING, SELF-LUBE
6	4	265072	BEARING, SELF-LUBE
7	2	265020-01	LOWER ARM (42" FLOOR HEIGHT)
		265020-02	LOWER ARM (48" FLOOR HEIGHT)
8	1		PIN CYLINDER
9	1	266314-01	PUMP COVER LH
		266315-01	PUMP COVER RH
10	1	261249	HANDLE, HAND PUMP
11	1		MAIN FRAME
12	1	265142-01	COVER LH
		265142-02	COVER RH
13	4		SOCKET SCREW, 1/4-20 X 1"
14	1		PIN, CYLINDER & CAM
15	2	261221	SPRING, UPPER ARM
16	4	904002-2	POP RIVETS
17	2	265171	PINCH GUARD

 **REFERENCE PARTS**

PLATFORM ASSEMBLY



PLATFORM ASSEMBLY

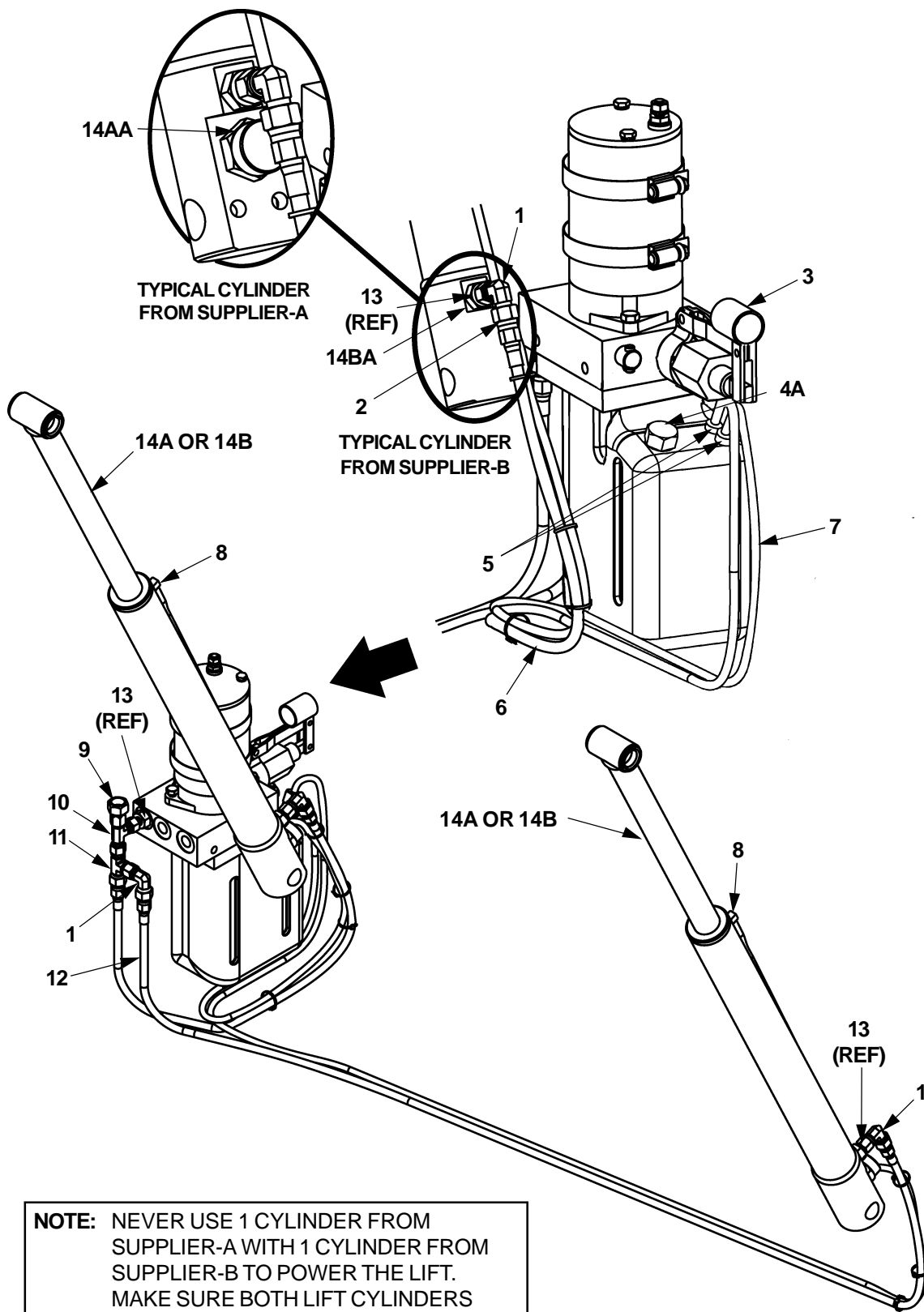
ITEM	QTY.	PART NO.	DESCRIPTION
1	1	265068-01	ROLL STOP WELDMENT 30"
		265068-02	ROLL STOP WELDMENT 33"
2	1	261346	MATting, NON SLIP FRONT
3	2	265058	NUT, SWIVEL
4	2	261314	WASHER, NYLON
5	1	265063-02	TORSION SPRING LH
6	1	265064-01	ACTUATOR WELDMENT LH
7	2	900000-2	BOLT, 1/4"-20 X 1/2" LG
8	2		WASHER, 3/8"
9	2		BUSHING, STOP ACTUATOR
10	2	905211-1	PIN, CLEVIS
11	2	903002-05	SCREW, SET HEX
12	1	265053	COLLAR, STOP ACTUATOR
13	4	903006-2	SCREW, SET 1/4"-20 X 1/4" LG.
14	1	265063-01	TORSION SPRING RH
15	1	265064-02	ACTUATOR WELDMENT RH
16	2	261317	SPACER, BUMPER
17	2		CAP SCREW, 8-32 X 1/2" LG.
18	1		PLATFORM 30"
			PLATFORM 33"
19	2	903008-1	SCREW, SET HEX
20	2	265062	BEARING, SELF-LUBE
21	2		LOCK NUT, NYLON
22	2		STRIKER, PLATFORM ADJUSTER
23	2		CAP SCREW, 5/16"-18 X 1-1/2" LG.
24	2	905293-10	VINYL TAPE, SOLID YELLOW (STRIP)
25	1	266233-01	INROLL RAMP ASSY, 30" WIDE PLATFORM
		266233-02	INROLL RAMP ASSY, 33" WIDE PLATFORM
25A	2	900005-1	SCREW, BUTTON 1/4"-20 X 3/8" LG. ALLOY
25B	2	261319	GUIDE, P/F FRONT W/CHAIR
25C	2	261347	MATting, NONSLIP REAR
25D	1		LABEL, DONT STAND (SEE DECALS)
26	14	900001-2	SCREW, BUTTON 5/16"-18 X 1/2" LG. ALLOY
27	14	901016-3	LOCK NUT, 5/16"-18 THIN HEAD
28	1	266238-01	HINGE, PLATFORM

REFERENCE PARTS

HYDRAULIC COMPONENTS

MAXON®

11921 Slauson Ave. Santa Fe Springs, CA. 90670 (800) 227-4116 FAX (888) 771-7713



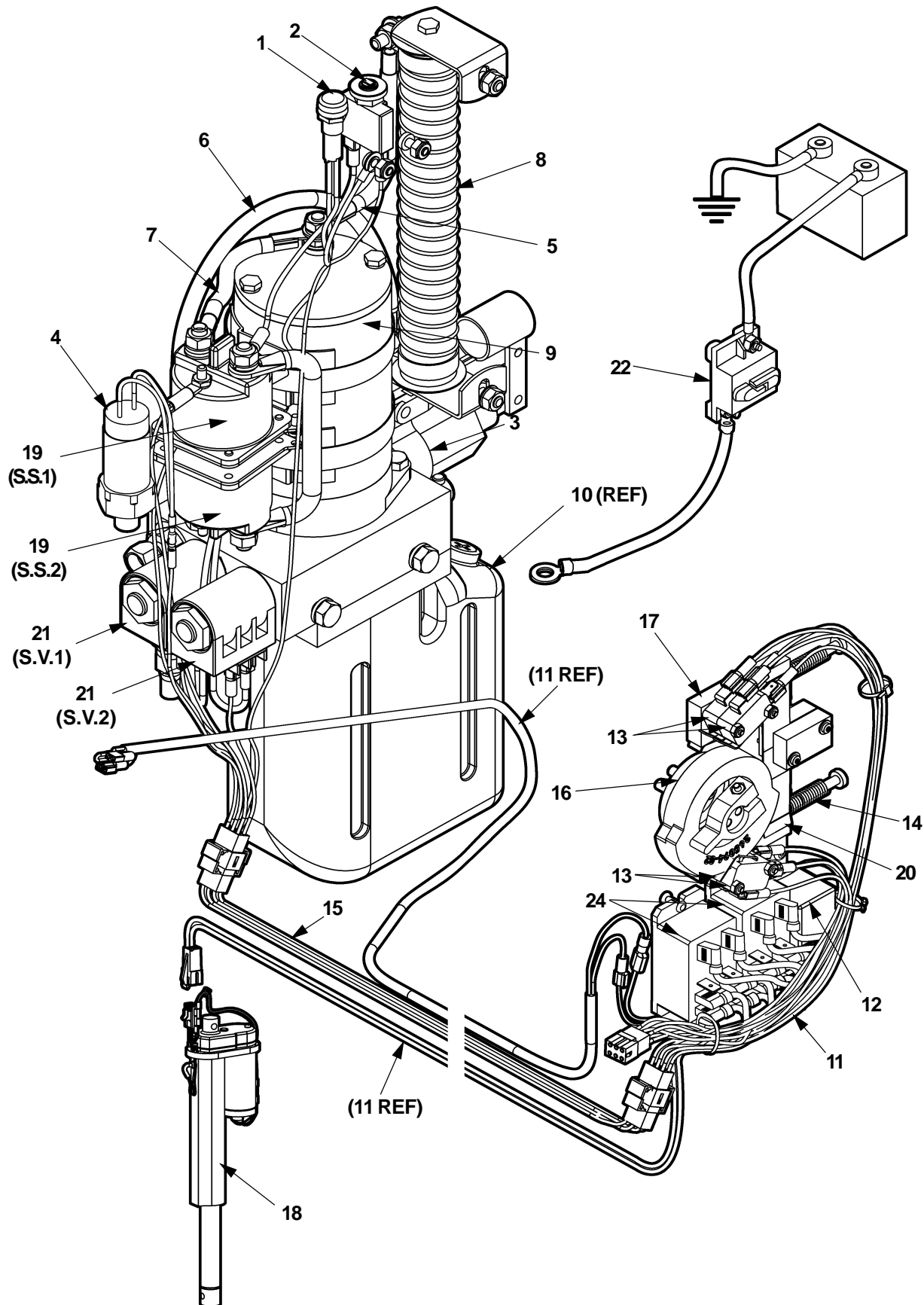
NOTE: NEVER USE 1 CYLINDER FROM SUPPLIER-A WITH 1 CYLINDER FROM SUPPLIER-B TO POWER THE LIFT. MAKE SURE BOTH LIFT CYLINDERS ARE THE SAME (FROM SUPPLIER-A OR SUPPLIER-B).

HYDRAULIC COMPONENTS

ITEM	QTY.	PART NO.	DESCRIPTION
1	3	905027	HYDRAULIC ELBOW
2	1	261351	HOSE ASSEMBLY 88" #4 JIC - #4JIC
3	1	265116	HAND PUMP
4	1	265117	RESERVOIR
4A	1	265141	BREATHING CAP
5	2	224369	BARB FITTING
6	1	905022-01	TUBING RETURNING LINE, 52"
7	1	905022-02	TUBING RETURNING LINE, 88"
8	2	905024	ELBOW FITTING
9	1	905249	SWIVEL, FEMALE
10	1	905250	TEE, SWIVEL
11	1	905026	TEE, FITTING RUN
12	1	261350	HOSE ASSEMBLY 63" #4 JIC - #4 JIC
13	2		FITTING, STRAIGHT THREAD, O-RING
14A	2	265055	HYDRAULIC CYLINDER (42" FLOOR HEIGHT) (SUPPLIER-A)
		265055-01	HYDRAULIC CYLINDER (48" FLOOR HEIGHT) (SUPPLIER-A)
14AA	1	905025	FLOW CONTROL PRESSURE VALVE (SUPPLIER-A)
14B	2	TBD	HYDRAULIC CYLINDER (42" FLOOR HEIGHT) (SUPPLIER-B)
		TBD	HYDRAULIC CYLINDER (48" FLOOR HEIGHT) (SUPPLIER-B)
14BA	1	TBD	FLOW CONTROL PRESSURE VALVE (SUPPLIER-B)

 REFERENCE PARTS

ELECTRICAL COMPONENTS



MAXON®

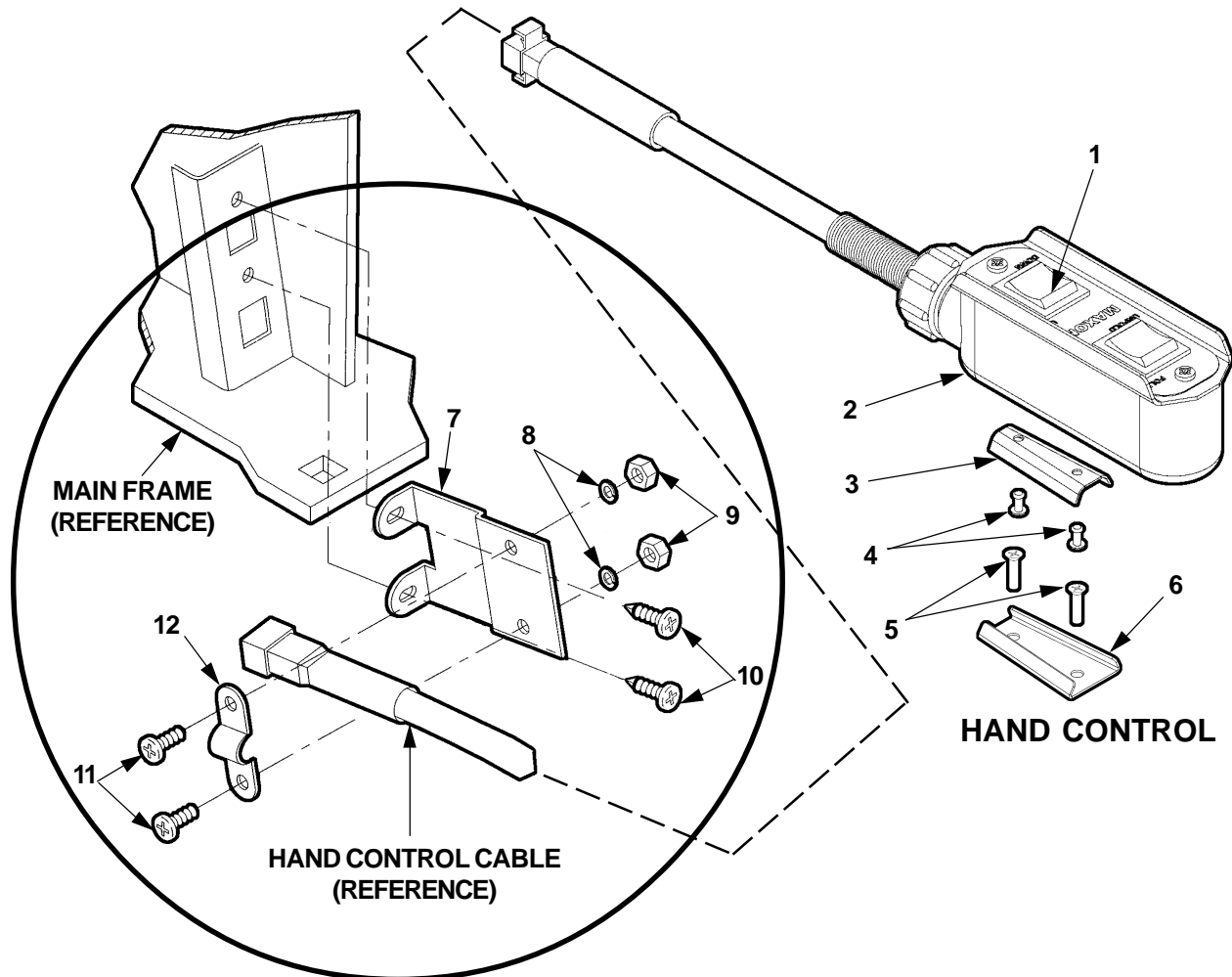
11921 Slauson Ave. Santa Fe Springs, CA. 90670 (800) 227-4116 FAX (888) 771-7713

ELECTRICAL COMPONENTS

ITEM	QTY.	PART NO.	DESCRIPTION
1	1	265144	INDICATOR LIGHT ASSEMBLY
2	1	907031	CIRCUIT BREAKER, 8 AMP
3	1	265130-01	PUMP ASSEMBLY, LH (LIFTS WITH LH PUMP)
		265130-02	PUMP ASSEMBLY, RH (LIFTS WITH RH PUMP)
4	1	265945-01	PRESSURE SWITCH ASSEMBLY, ADJUSTABLE
5	1	265127	CABLE ASSEMBLY
6	1	265128	CABLE ASSEMBLY
7	1	265124	CABLE ASSEMBLY
8	1	265121	RESISTOR
9	1	265118	MOTOR - 12V
10	1		RESERVOIR (SEE HYDRAULIC COMPONENTS)
11	1	265150-01	ELECTRICAL HARNESS
12	1	265147	RELAY
13	4	905032	SWITCH, LIMIT (FLOOR LEVEL)
14	2	261365	SPRING, LATCH
15	1		EXTENSION HARNESS ASSEMBLY
16	1	265094-01	CAM LIFT CONTROL LH (LIFTS WITH RH PUMP)
		265094-02	CAM LIFT CONTROL RH (LIFTS WITH LH PUMP)
17	1	265106-01	SWITCH AND BLOCK ASSEMBLY, LH (LIFTS WITH RH PUMP)
		265106-02	SWITCH AND BLOCK ASSEMBLY, RH (LIFTS WITH LH PUMP)
18	1	266231-01	ACTUATOR ASSEMBLY
19	2	265115-01	SOLENOID SWITCH, 12V, 3-TERMINAL
20	1	265097	SPRING RETAINER
21	2	265125	2-WAY VALVE ASSEMBLY
22	1	905037	CIRCUIT BREAKER 90 AMP
23	2	906404	RELAY, 12 VDC

REFERENCE PARTS

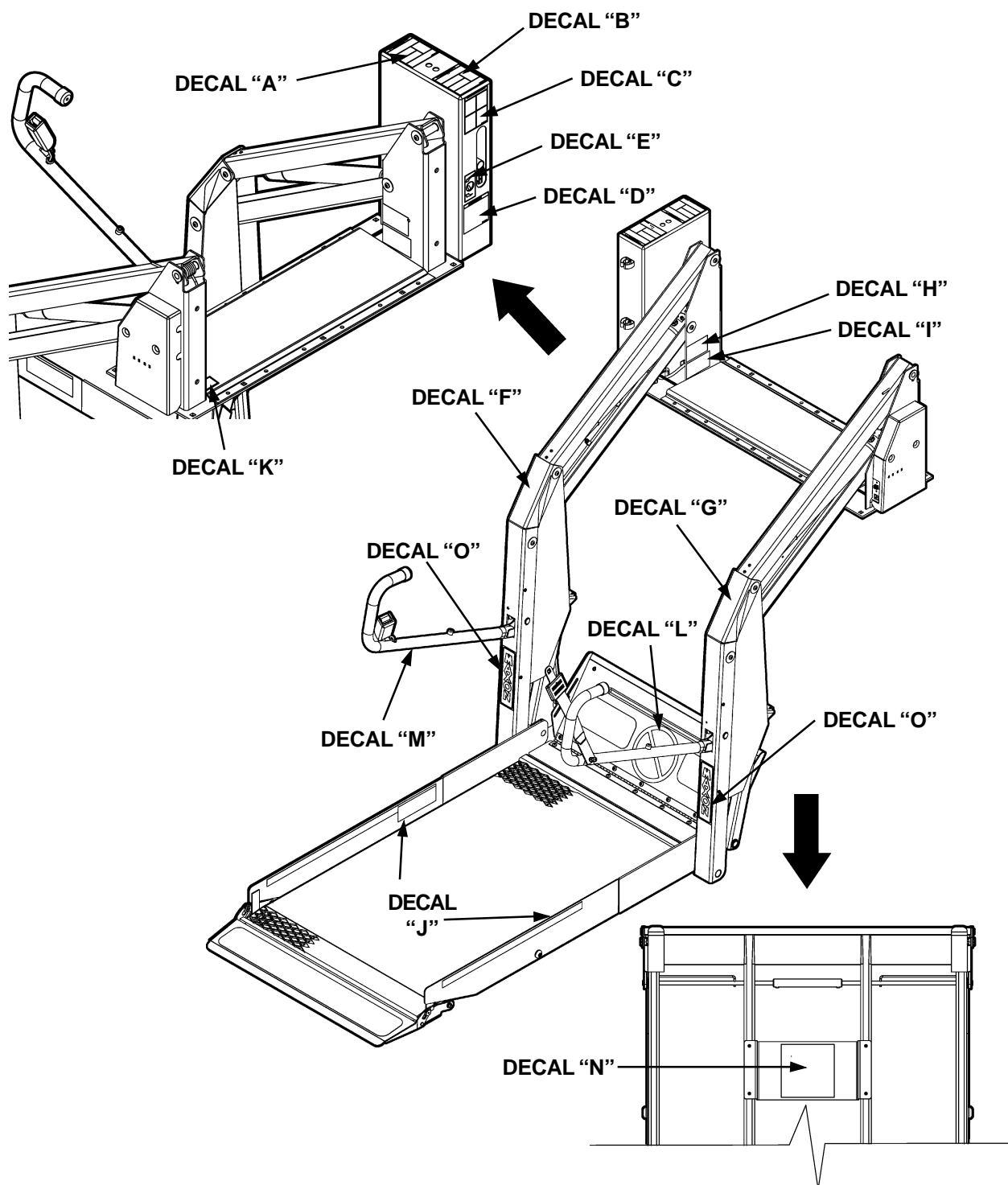
HAND CONTROL ASSEMBLY



STRAIN RELIEF

ITEM	QTY.	PART NO.	DESCRIPTION
1	2	905260	SWITCH, HAND CONTROL
2	1	265100-01	HAND CONTROL ASSEMBLY
		265100-02	HAND CONTROL ASSEMBLY (ARMORED)
3	1	261445	HOOK, HAND CONTROL
4	2	904004-2	RIVET
5	2	261413	PAN HEAD SCREW, SELF-TAP, #8 x 3/8" LG.
6	1	265120	BRACKET, MOUNT HAND CONTROL
7	1	261364	STRAIN RELIEF
8	1	902006-1	LOCK WASHER, #10
9	1	901003	NYLON LOCK NUT, #10-24
10	1	900026-3	PAN HEAD SCREW, THREAD CUTTING, #8-32 x 1/2" LG.
11	2	900007-1	PAN HEAD SCREW, #10-24 x 5/8" LG.
12	1	265120	BRACKET, MOUNT HAND CONTROL

DECALS AND DECAL PLACEMENT



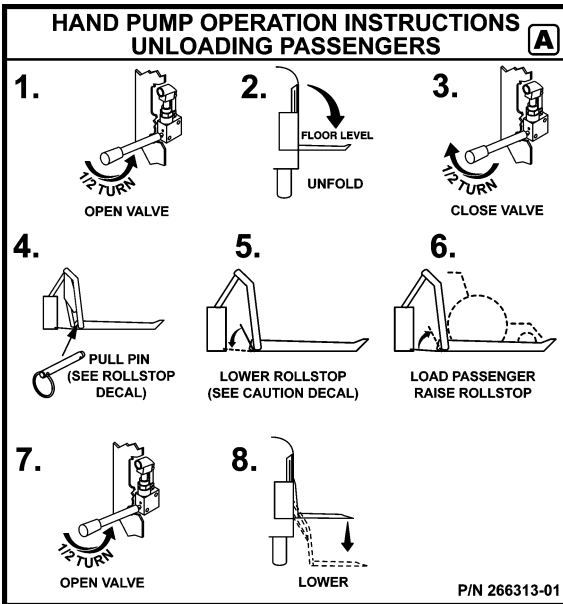
The Wheelchair Lift must have all **WARNING** and **CAUTION** decals attached, and decals must be legible. If decals are defaced or missing, replace them. Free replacements are available from Maxon by contacting:

MAXON LIFT CORP. Customer Service
 11921 Slauson Ave., Santa Fe Springs, CA 90670
 Phone: (800) 227-4116
 Email: partssales@maxonlift.com

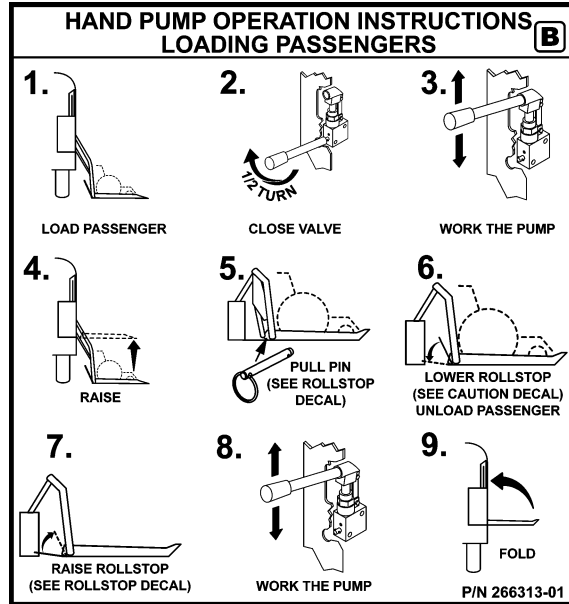
DECALS AND DECAL PLACEMENT - Continued

MAXON®

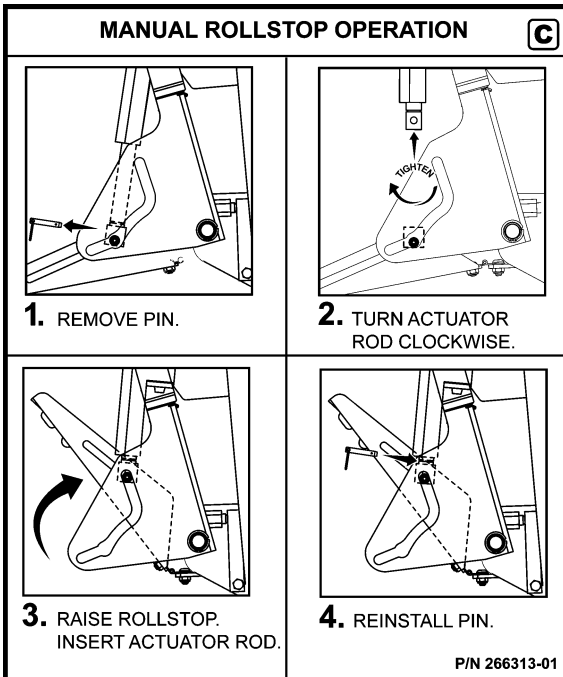
11921 Slauson Ave. Santa Fe Springs, CA. 90670 (800) 227-4116 FAX (888) 771-7713



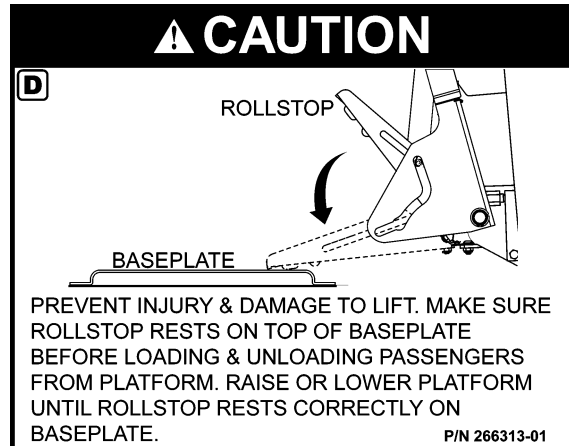
DECAL "A" P/N 266313-01



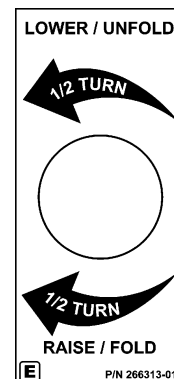
DECAL "B" P/N 266313-01



DECAL "C" P/N 266313-01



DECAL "D" P/N 266313-01



DECAL "E" P/N 266313-01

OPERATING INSTRUCTIONS:

ENTER VEHICLE

1. Fully open and secure door(s).
2. Activate **UNFOLD** switch to open platform to horizontal position.
3. Activate **LOWER** switch to lower platform to ground level.
4. Position Wheelchair centrally on platform and **LOCK WHEELCHAIR BRAKES**.
5. Fasten Occupant Restraint Belt.
6. Activate **RAISE** switch to raise platform to vehicle floor level.
7. Release wheelchair brakes and enter vehicle.

EXIT VEHICLE

1. Fully open and secure door(s).
2. Activate **UNFOLD** switch to open platform to horizontal position.
3. Fasten Occupant Restraint Belt.
4. Position wheelchair centrally on platform and **LOCK WHEELCHAIR BRAKES**.
5. Activate **LOWER** switch to lower platform to ground level.
6. Unlatch Occupant Restraint Belt and place on hook provided.
7. Release wheelchair brakes and exit platform.

STOW LIFT

From Vehicle Floor

1. Activate **FOLD** switch to close platform. Fold operation will stop automatically when completed.

From Ground Level

1. Activate **RAISE** switch to raise platform to vehicle floor level.
2. Activate **FOLD** switch to close platform. Fold operation will stop automatically when completed.
3. Close Door(s) P/N 261389

DECAL "F" P/N 261389

MAXON®		
0042FA00001	800	WL-6A-A
SERIAL	CAPACITY (LBS)	MODEL
SANTA FE SPRINGS CALIF.		
MADE IN MEXICO		
MO.	<input type="text"/>	YEAR <input type="text"/>

905272

DECAL "H" P/N 905272

COMMERCIAL WHEELCHAIR LIFT

WARNING

- This Wheelchair Lift is intended for Commercial Use and to be operated by an Attendant. Do Not attempt to ride Lift without the assistance of an Attendant.
- Improper operation of this Lift can result in serious personal injury. Do not operate unless you have been properly instructed and have read, and are familiar with, the operating instructions. If you do not have a copy of the Operator's Manual, additional copies are available from:

MAXON Lift Corp.

11921 Slauson Ave

Santa Fe Springs, CA 90670

(800) 227-4116

- Be certain the vehicle is properly and securely braked before using the lift.
- Prior to use, inspect the Lift for maintenance or damage. If a problem exists, do not use Lift until it is corrected.

Do not exceed rated load capacity of Lift which is 800 lbs. (364 kg).

- Do not allow any part of yours or your rider's body to be placed under, within, or around any portion of the moving Lift or its mechanisms, or in a position that would trap them between the platform and the ground or vehicle when the Lift is operated.
- Be certain that the area the Lift will move through during operation is clear of all obstacles.
- Above all, USE GOOD COMMON SENSE when operating this Lift.

P/N 265352

DECAL "G" P/N 265352

The MAXON Lift Corp. certifies that this wheelchair lift conforms to all applicable requirements of the Americans w/Disabilities Act of 1990, the National Standards for School Buses and the California Code of Regulations requirements in effect on the date of manufacture.

P/N 265112

DECAL "I" P/N 265112

DECALS AND DECAL PLACEMENT - Continued

MAXON®

11921 Slauson Ave. Santa Fe Springs, CA. 90670 (800) 227-4116 FAX (888) 771-7713

WARNING

STANDING POSITION ON PLATFORM

**Position a standing passenger
in center of platform between
handrails, facing direction of travel.**

P/N 265110

DECAL "J" P/N 265110



P/N 261444

DECAL "L" P/N 261444



P/N 261357

DECAL "N" P/N 261357

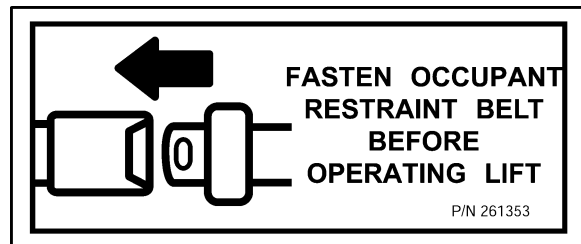
Chassis Electrical Ground

The surface finish of this lift is powder coat paint. To insure a proper electrical ground to the vehicle chassis remove the paint from the area around the chassis grounding strap mounting bolt hole by grinding or sanding the surface to expose bare metal. Also, remove any undercoating from the surface of the vehicle chassis where the strap will be fastened.

Failure to properly ground the electrical system can result in faulty Lift operation and premature electrical system failure.

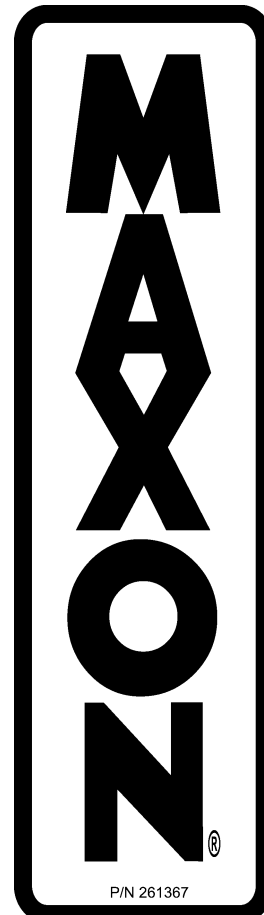
P/N 265325

DECAL "K" P/N 265325



P/N 261353

DECAL "M" P/N 261353

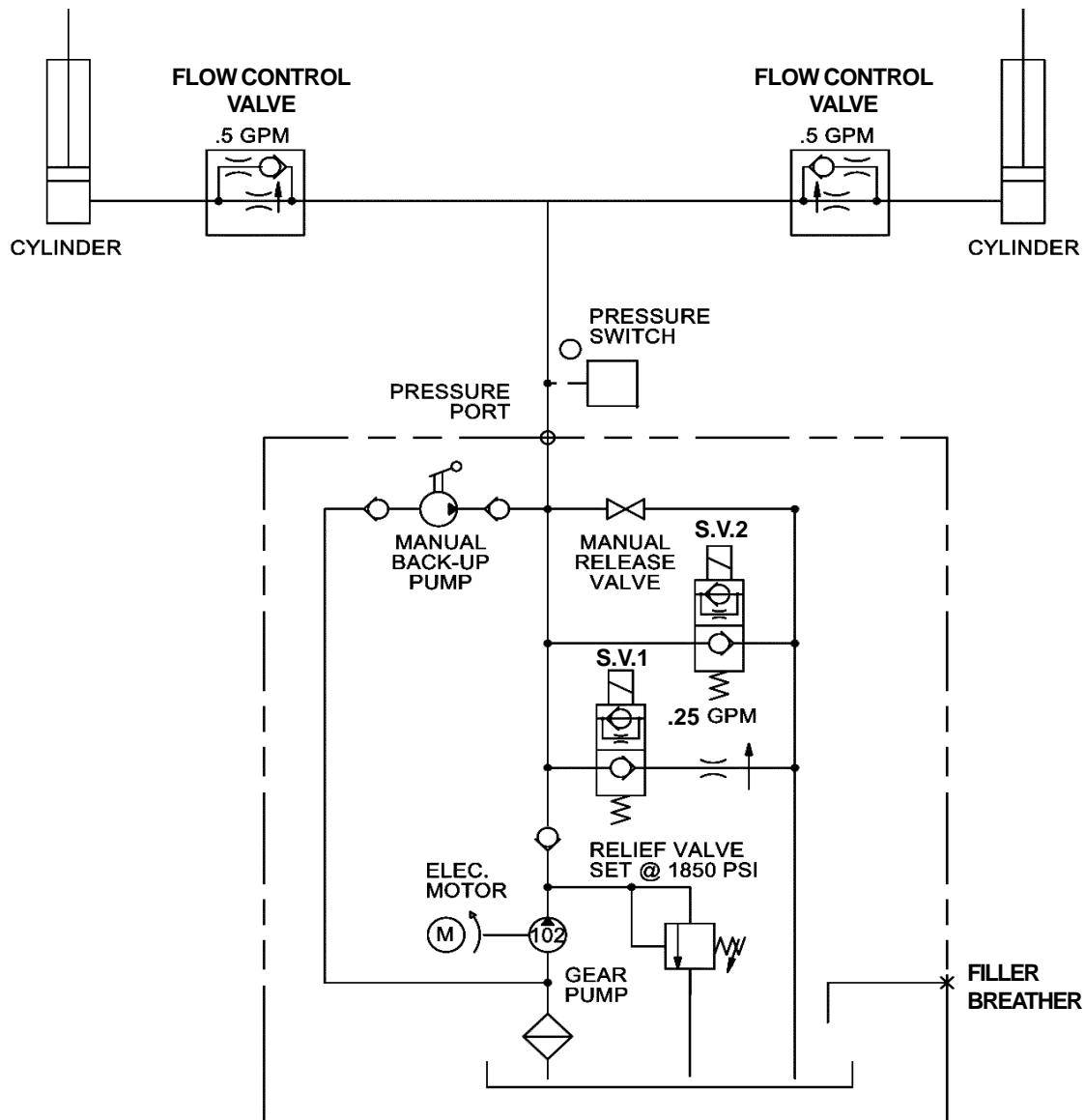


P/N 261367

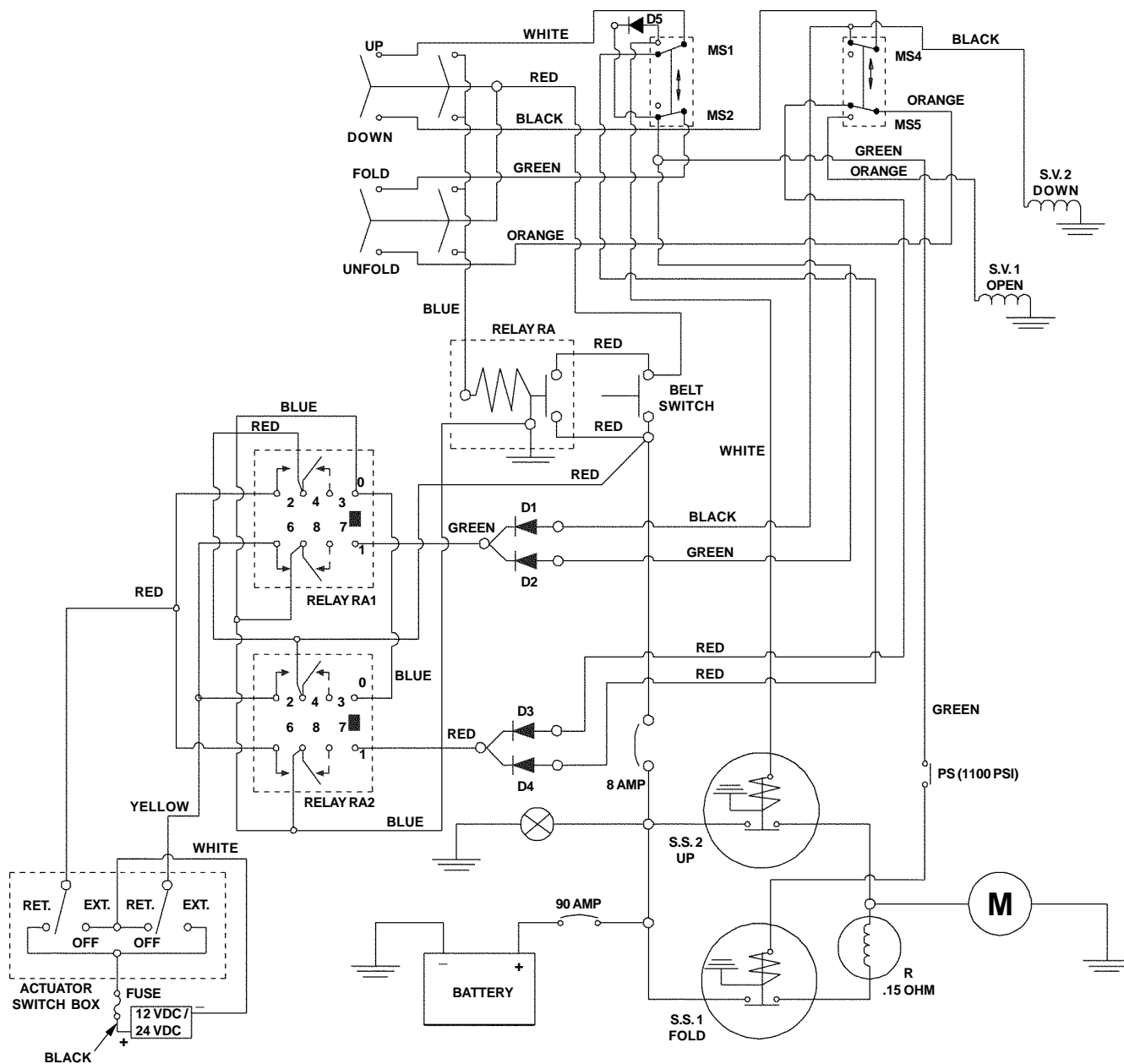
DECAL "O" P/N 261367

SCHEMATICS

HYDRAULIC SCHEMATIC



ELECTRICAL SCHEMATIC



TROUBLE SHOOTING GUIDE



WARNING

DO NOT OPERATE WHEELCHAIR LIFT IF IT MALFUNCTIONS. LIFT MUST BE REPAIRED BY AN AUTHORIZED MOBILITY DEALER BEFORE RESUMING LIFT OPERATION.

WHEELCHAIR LIFT TROUBLE SHOOTING GUIDE

MALFUNCTION	POSSIBLE CAUSE	ACTION
1. LIFT WILL NOT OPERATE AND INTERLOCK LIGHT IS NOT ILLUMINATED.	Vehicle interlock circuit supplying primary power to the Lift	Check vehicle interlock circuit. Reset or repair as required.
2. LIFT WILL NOT LIFT UP OR FOLD, BUT INDICATOR LIGHT IS ILLUMINATED.	a. OCCUPANT RESTRAINT unfastened b. Pressure release valve open (manual pump) c. Faulty solenoid switch d. Faulty pump motor e. Faulty HAND CONTROL f. Leaking cylinder seals.	a. Fasten OCCUPANT RESTRAINT. b. Close Pressure release valve. c. Replace faulty solenoid switch. d. Replace faulty pump motor. e. Replace faulty HAND CONTROL. f. Replace leaking cylinder seals.
3. LIFT OPERATES WITHOUT FASTENING RESTRAINT BELT AND INDICATOR LIGHT IS ILLUMINATED.	Electrical short in RESTRAINT BELT ASSEMBLY.	Replace faulty RESTRAINT BELT ASSEMBLY.
4. LIFT OPERATES, BUT INDICATOR LIGHT WILL NOT ILLUMINATE.	Faulty INDICATOR LIGHT (or its connecting wiring).	Replace faulty INDICATOR LIGHT.
5. MOTOR KEEPS RUNNING AFTER LIFT IS FOLDED.	Faulty Pressure Switch	Replace Pressure Switch.
6. LIFT WILL NOT UNFOLD.	a. No power to S.V.1. b. Faulty HAND CONTROL c. Obstructed traveling arms d. Faulty UNFOLD CUTOFF SWITCH.	a. Adjust or replace limit switch ms5. b. Replace HAND CONTROL c. Remove obstructions from traveling arms. d. Replace faulty UNFOLD CUTOFF SWITCH.
7. LIFT DOES NOT UNFOLD SMOOTHLY OR UNFOLDS UNEVENLY.	a. Low hydraulic fluid level b. Leaking hydraulic components: hoses, valves, cylinders, or pressure switches c. UNFOLD CUTOFF and DOWN ARMING SWITCHES need adjustment.	a. Check for hydraulic fluid leaks, correct leaks, and add recommended grade of hydraulic fluid to correct level. b. Replace damaged components: hoses, valves, cylinder seals, or pressure switches. c. Adjust UNFOLD CUTOFF and DOWN ARMING SWITCHES according to Limit Switch Adjustment procedure.
8. LIFT WILL NOT LOWER.	a. No power to S.V.2. b. FLOW CONTROLS may be contaminated or faulty. c. Faulty HAND CONTROL d. Obstructed traveling arms e. Faulty DOWN ARMING SWITCH.	a. Adjust or replace limit switch ms4. b. Clean contaminated flow controls. If malfunction still exists, replace FLOW CONTROLS. c. Replace HAND CONTROL. d. Remove obstructions from traveling arms. e. Replace faulty DOWN ARMING SWITCH.
9. LIFT DOES NOT LOWER SMOOTHLY OR LOWERS UNEVENLY.	a. Low hydraulic fluid level b. Leaking hydraulic components: hoses, pumps, valves cylinders, or pressure switches c. FLOW CONTROLS may be contaminated or faulty. d. UNFOLD CUTOFF and DOWN ARMING SWITCHES need adjustment.	a. Check for hydraulic fluid leaks, correct leaks, and add recommended grade of hydraulic fluid to correct level. b. Replace damaged components: hoses, pumps, valves cylinder seals, or pressure switches. c. Clean contaminated FLOW CONTROLS. If malfunction still exists replace FLOW CONTROLS. d. Adjust UNFOLD CUTOFF and DOWN ARMING SWITCHES according to Limit Switch Adjustment procedure.

MAXON®

11921 Slauson Ave. Santa Fe Springs, CA. 90670 (800) 227-4116 FAX (888) 771-7713

TROUBLE SHOOTING GUIDE - Continued

WHEELCHAIR LIFT TROUBLE SHOOTING GUIDE		
MALFUNCTION	POSSIBLE CAUSE	ACTION
10. LIFT WILL NOT RAISE.	<ul style="list-style-type: none"> a. Manual pump pressure release valve open. b. Leaking hydraulic components: hoses, pumps, valves cylinders, or pressure switches c. Faulty motor d. Faulty solenoid switch e. Faulty HAND CONTROL f. Faulty UP CUTOFF SWITCH g. Obstructed traveling arms 	<ul style="list-style-type: none"> a. Close manual pump pressure release valve. b. Check for hydraulic fluid leaks, correct leaks, and add recommended grade of hydraulic fluid to correct level. Replace damaged components: hoses, valves, cylinder seals, or pressure switches. c. Replace faulty motor. d. Replace faulty solenoid switch. e. Replace faulty HAND CONTROL. f. Replace faulty UP CUTOFF SWITCH. g. Remove obstructions from traveling arms.
11. LIFT DOES NOT RAISE SMOOTHLY OR RAISES UNEVENLY.	<ul style="list-style-type: none"> a. Low hydraulic fluid level b. Air in hydraulic system. c. Leaking hydraulic components: hoses, pumps, valves cylinders, or pressure switches d. UP CUTOFF and FOLD ARMING SWITCHES need adjustment. 	<ul style="list-style-type: none"> a. Check for hydraulic fluid leaks, correct leaks, and add recommended grade of hydraulic fluid to correct level. b. Bleed hydraulic system. c. Replace damaged components: hoses, valves, cylinder seals, or pressure switches. d. Adjust UP CUTOFF and FOLD ARMING SWITCHES according to Limit Switch Adjustment procedure.
12. LIFT WILL NOT FOLD.	<ul style="list-style-type: none"> a. Manual pump pressure release valve open. b. Low hydraulic fluid level c. Flow controls may be contaminated or faulty d. Faulty HAND CONTROL e. Obstructed traveling arms f. Faulty FOLD ARMING SWITCH. g. Battery voltage too low. h. PRESSURE SWITCH needs adjustment. 	<ul style="list-style-type: none"> a. Close manual pump pressure release valve. b. Check for hydraulic fluid leaks, correct leaks, and add recommended grade of hydraulic fluid to correct level. c. Clean contaminated flow controls. If malfunction still exists, replace flow controls. d. Replace HAND CONTROL. e. Remove obstructions from traveling arms. f. Replace faulty FOLD ARMING SWITCH. g. Check battery voltage for +12.6 VDC min.Charge or replace. h. Adjust PRESSURE SWITCH according to adjustment procedure.
13. LIFT DOES NOT FOLD SMOOTHLY, OR FOLDS UNEVENLY.	<ul style="list-style-type: none"> a. Manual pump pressure release valve open. b. Flow controls may be contaminated or faulty. c. UP CUTOFF and FOLD ARMING SWITCHES need adjustment. 	<ul style="list-style-type: none"> a. Close manual pump pressure release valve and add recommended grade of hydraulic fluid to correct level. b. Clean contaminated flow controls. If malfunction still exists, replace flow controls. c. Adjust UP CUTOFF and FOLD ARMING SWITCHES according to Limit Switch Adjustment procedure
14. PLATFORM ROLLSTOPS (OUTBOARD OR INBOARD) DO NOT RAISE OR LOWER.	<ul style="list-style-type: none"> a. Obstructed RELEASE LATCH (Outboard). b. PLATFORM moving parts need lubrication. c. Bent or damaged components d. Faulty INBOARD ROLLSTOP Actuator. e. Battery voltage too low. 	<ul style="list-style-type: none"> a. Remove obstructions from ROLLSTOP release mechanism. b. Lubricate Lift parts as indicated in Periodic Maintenance Checklist. c. Replace ROLLSTOP. d. Replace INBOARD ROLLSTOP Actuator. e. Check battery voltage for +12.6 VDC min.Charge or replace.