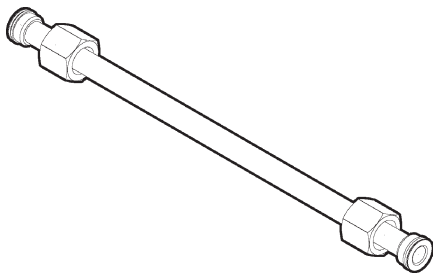
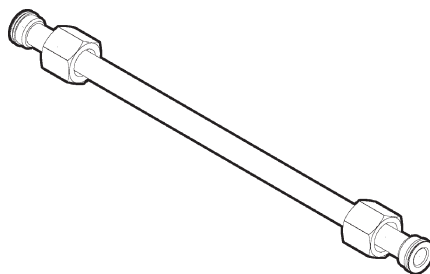


## INSTALLATION INSTRUCTION FOR BMR-A ABOVE BED KIT KIT P/N 285975-01

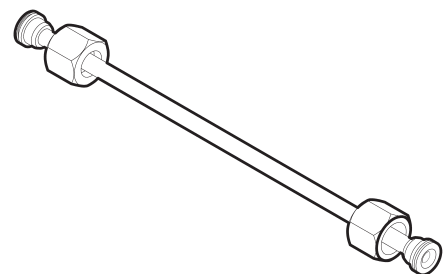
**NOTE:** The Liftgate can be mounted so the platform is up to 8" above the floor of the vehicle. However, platform travel cannot be more than 53" above the ground. Platform will not reach the ground if Liftgate is installed at a height that allows for platform to be raised more than 53" above the ground.



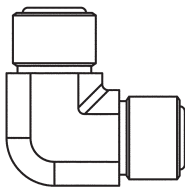
**TUBE ASSEMBLY  
O-RING FACE SEAL  
8" LG. (1/2" O.D.)  
P/N 280551-01  
QTY. 2**



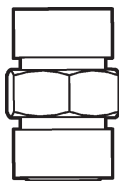
**TUBE ASSEMBLY  
O-RING FACE SEAL  
8" LG. (3/8" O.D.)  
P/N 280552-01  
QTY. 2**



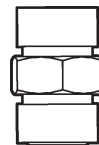
**TUBE ASSEMBLY  
O-RING FACE SEAL  
8" LG. (1/4" O.D.)  
P/N 268894-01  
QTY. 1**



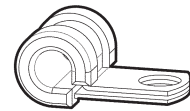
**UNION, ELBOW,  
F/S #4M-#4M 90°  
P/N 906792-01  
QTY. 1**



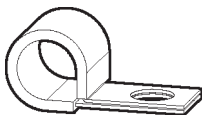
**UNION, FACE SEAL,  
#8 MALE-TO-MALE  
P/N 905161  
QTY. 2**



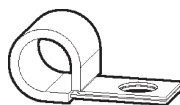
**UNION, FACE SEAL,  
#6 MALE-TO-MALE  
P/N 905175  
QTY. 2**



**CLAMP, #4  
RUBBER LOOM  
P/N 906479-01  
QTY. 1**



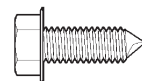
**CLAMP, #8  
RUBBER LOOM  
P/N 214663  
QTY. 2**



**CLAMP, #6  
RUBBER LOOM  
P/N 224006  
QTY. 2**



**PLASTIC TIE, 7"  
P/N 205780  
QTY. 5**



**SCREW, SELF-  
DRILLING, 3/4" LONG  
P/N 900045-1  
QTY. 5**

**NOTE:** Use these instructions along with BMR-A Installation Manual **M-00-24** to do a complete Liftgate installation. The following instructions only cover the work and parts that enable the BMR-A Liftgate to raise above vehicle bed level. Refer to **M-00-24** for instructions for installing the Liftgate, hydraulic system, electric system, and optional equipment components.

**⚠ CAUTION**

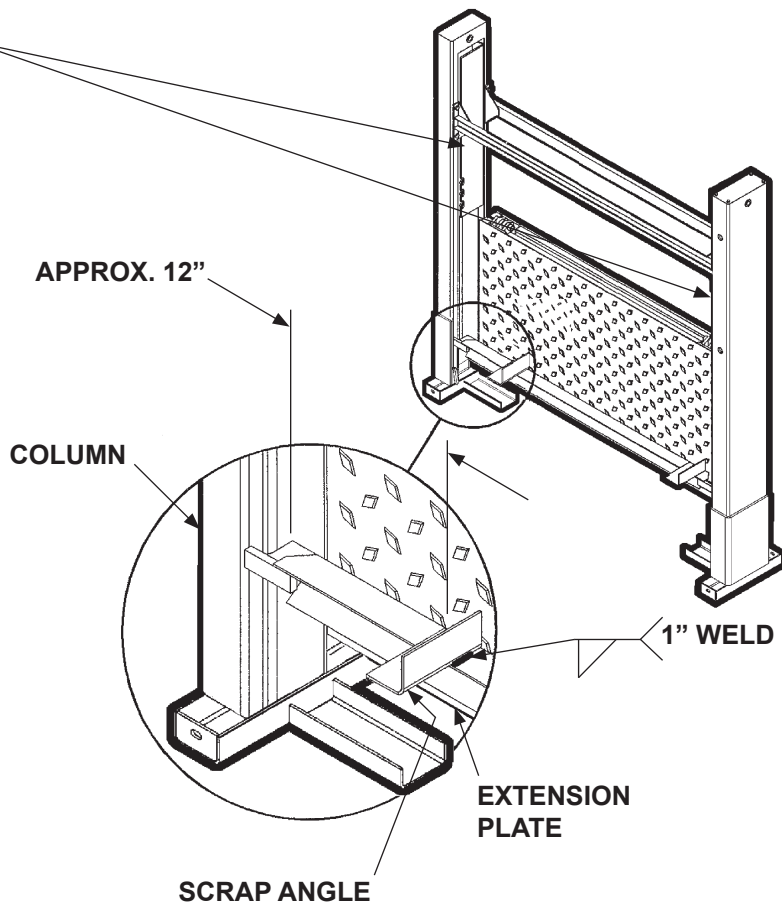
Comply with welding **CAUTION** decals on the LH & RH runners.

**CAUTION**

Electrical components and metal parts on this liftgate can be severely damaged by connecting an electric welder to liftgate at the wrong place. To prevent damage, always connect ground lead directly to the component being welded (e.g. runner, column, platform) and as close to the weld as possible.

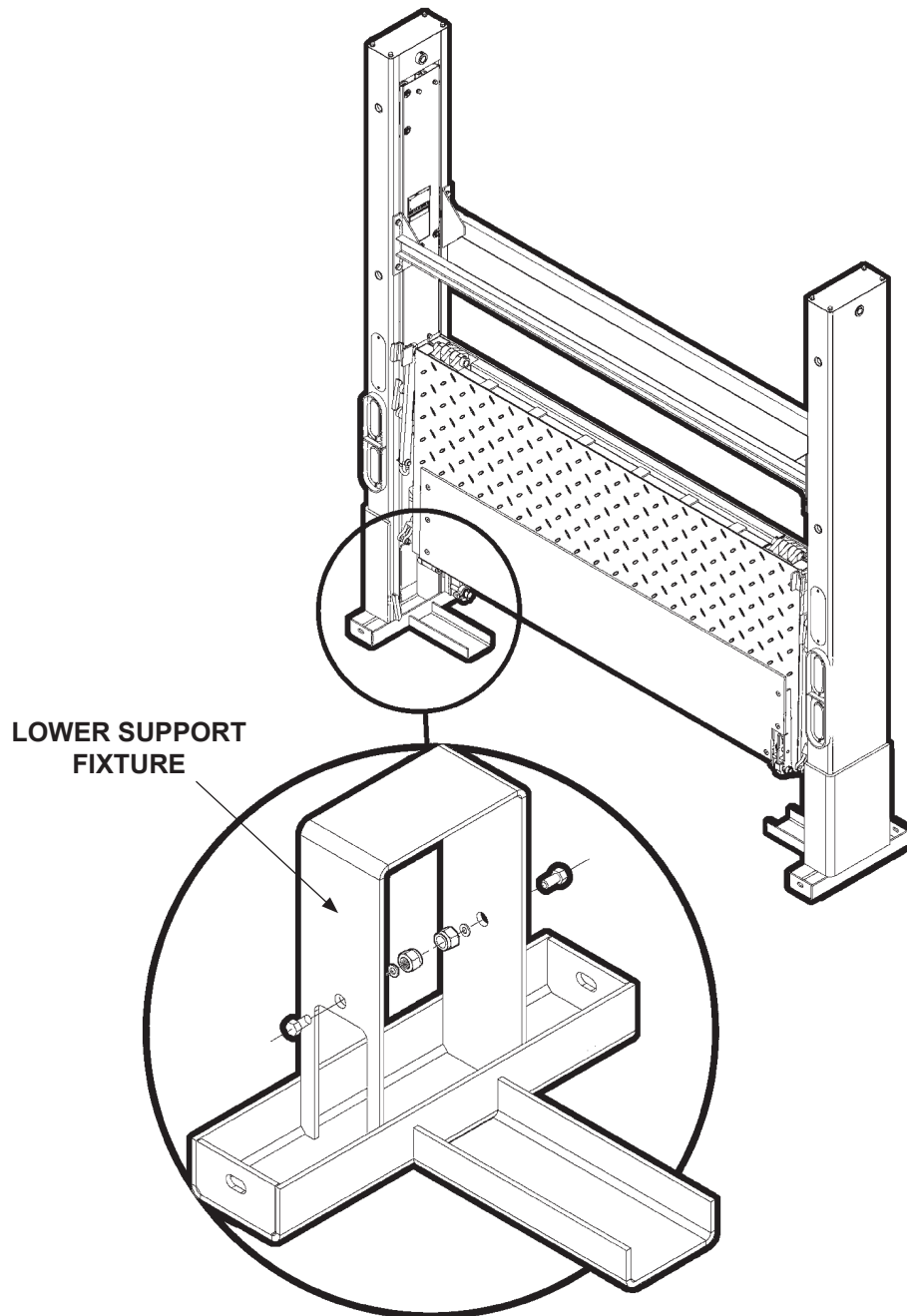
P/N 260293

1. Weld 2 pieces of 10" x 2" angle stock to the top surface of the extension plate near the left hand (LH) column as shown in **FIG. 2-1** and the same way near the right hand (RH) column. The angle stock helps keep extension plate flush with top of vehicle bed while installing Liftgate.



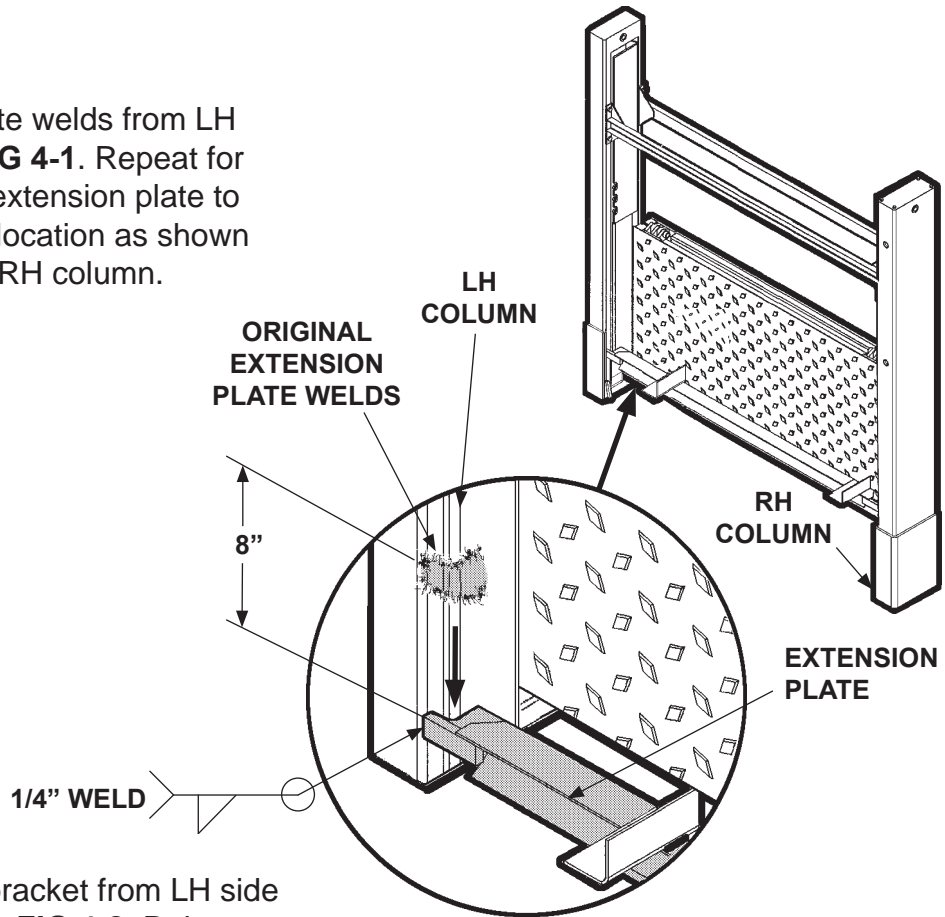
**FIG. 2-1**

2. Remove the (2) lower support fixtures (**FIG. 3-1**) by unbolting them from inside both columns.



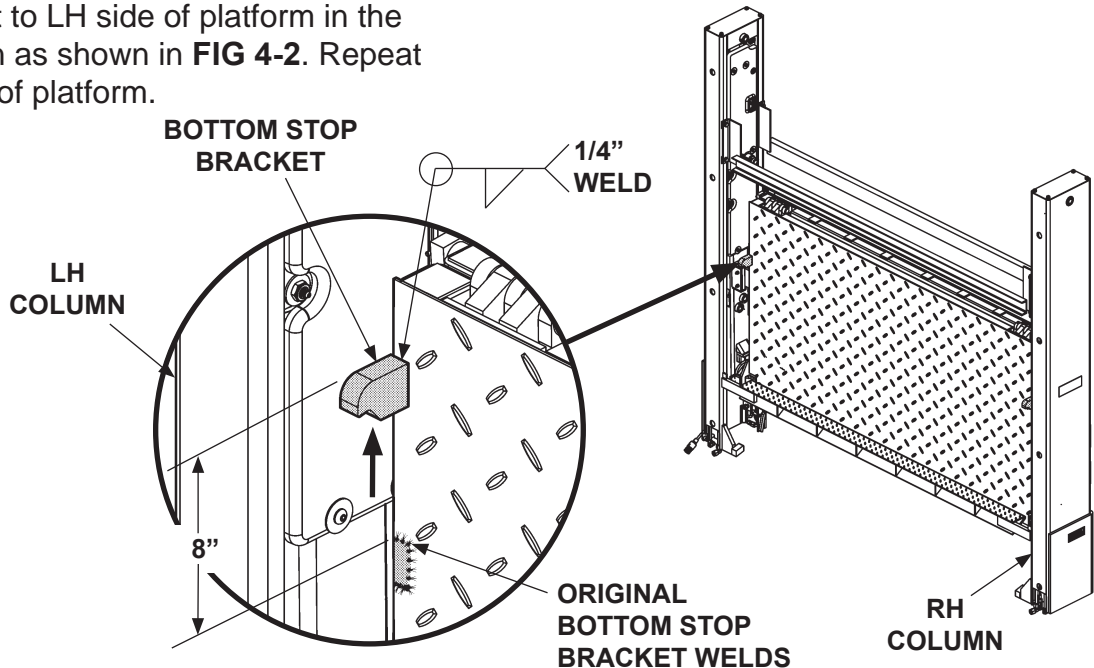
**FIG. 3-1**

3. Remove extension plate welds from LH column as shown in **FIG 4-1**. Repeat for RH column. Weld the extension plate to LH column in the new location as shown in **FIG 4-1**. Repeat for RH column.



**FIG. 4-1**

4. Remove bottom stop bracket from LH side of platform as shown in **FIG 4-2**. Raise stop bracket the same amount as extension plate was lowered. Then, weld the stop bracket to LH side of platform in the new location as shown in **FIG 4-2**. Repeat for RH side of platform.



**FIG. 4-2**

## CAUTION

Keep dirt, water and other contaminants from entering the hydraulic system. Before opening the hydraulic fluid reservoir filler cap, drain plug and hydraulic lines, clean up contaminants that can get in the openings. Also, protect the openings from accidental contamination.

5. Remove protective caps from fittings prior to installing extension tubes.
6. Remove original elbows from power down lines (**FIG. 6-1**), return lines (**FIG. 7-1**) and lifting lines (**FIGS. 6-1 & 7-1**).
7. Connect tube assemblies (kit items) to hydraulic lines (**FIGS. 6-1 & 7-1**).
8. Reconnect original elbows to bottom of respective tube assemblies (**FIGS. 6-1 & 7-1**).
9. Loosen and rotate original elbow for closing line downward 90° on right hand column. (**FIGS. 6-1 & 7-1**). Connect 1/4" O.D. tube (kit item) to line. Then, attach #4 elbow to 1/4" O.D. tube as shown in **FIGS. 6-1 & 7-1**.
10. Ensure elbows at bottom of extension tubes are rotated towards the front of vehicle (**FIG. 8-1**).
11. Connect hydraulic lines to open end of each elbow as shown in (**FIGS. 6-1 & 7-1**).
12. Tighten all connections securely.

**RUN HYDRAULIC LINES**

**CAUTION**

Before connecting hoses, ensure face seal o-rings are in place.

**NOTES:** For information on the hoses in this illustration, see section for running hydraulic lines in the BMR-A Installation Manual M-00-24.

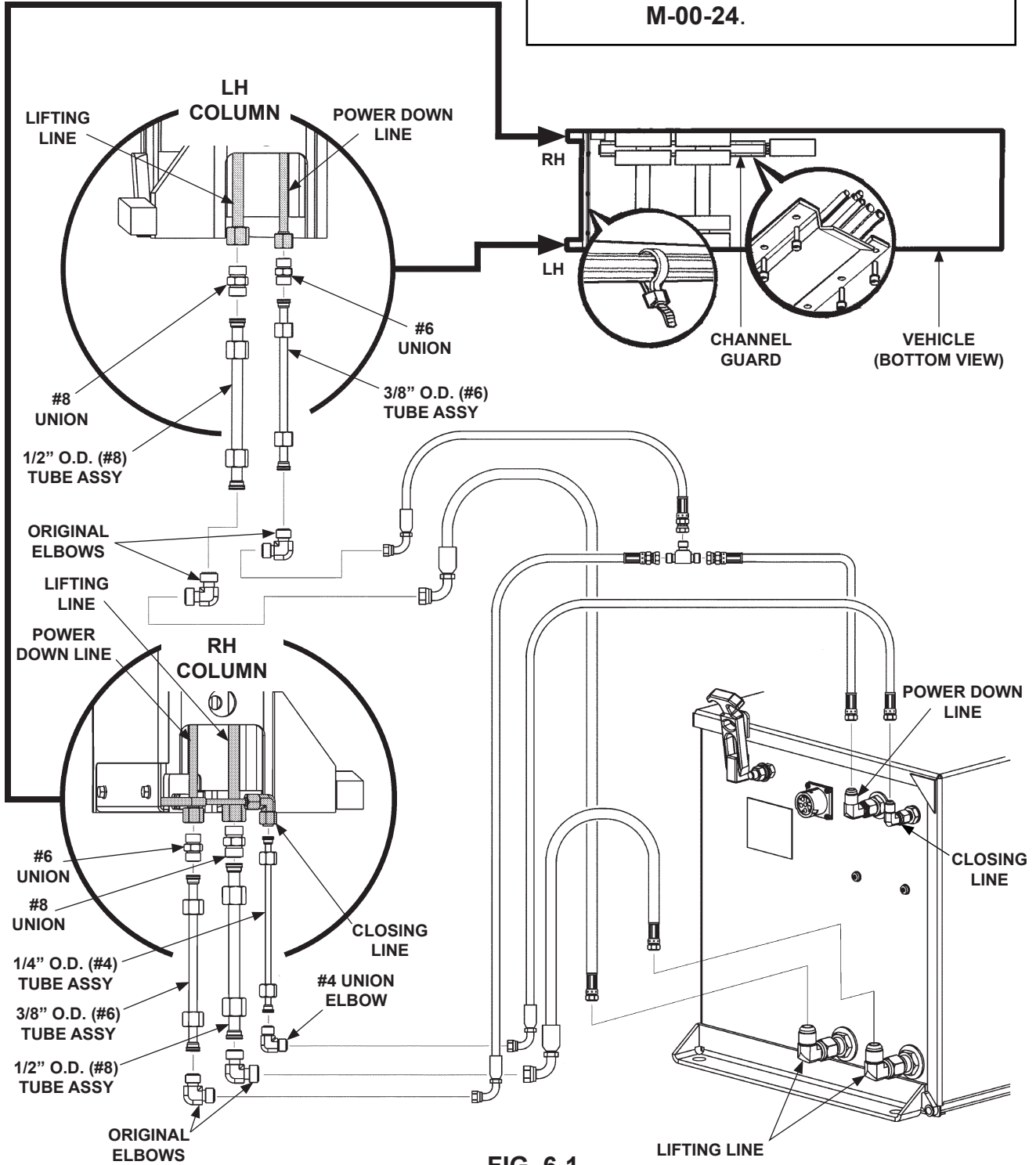


FIG. 6-1

**RUN HYDRAULIC LINES****CAUTION**

Before connecting hoses, ensure face seal o-rings are in place.

**NOTES:** For information on the hoses in this illustration, see section for running hydraulic lines in the BMR-A Installation Manual M-00-24.

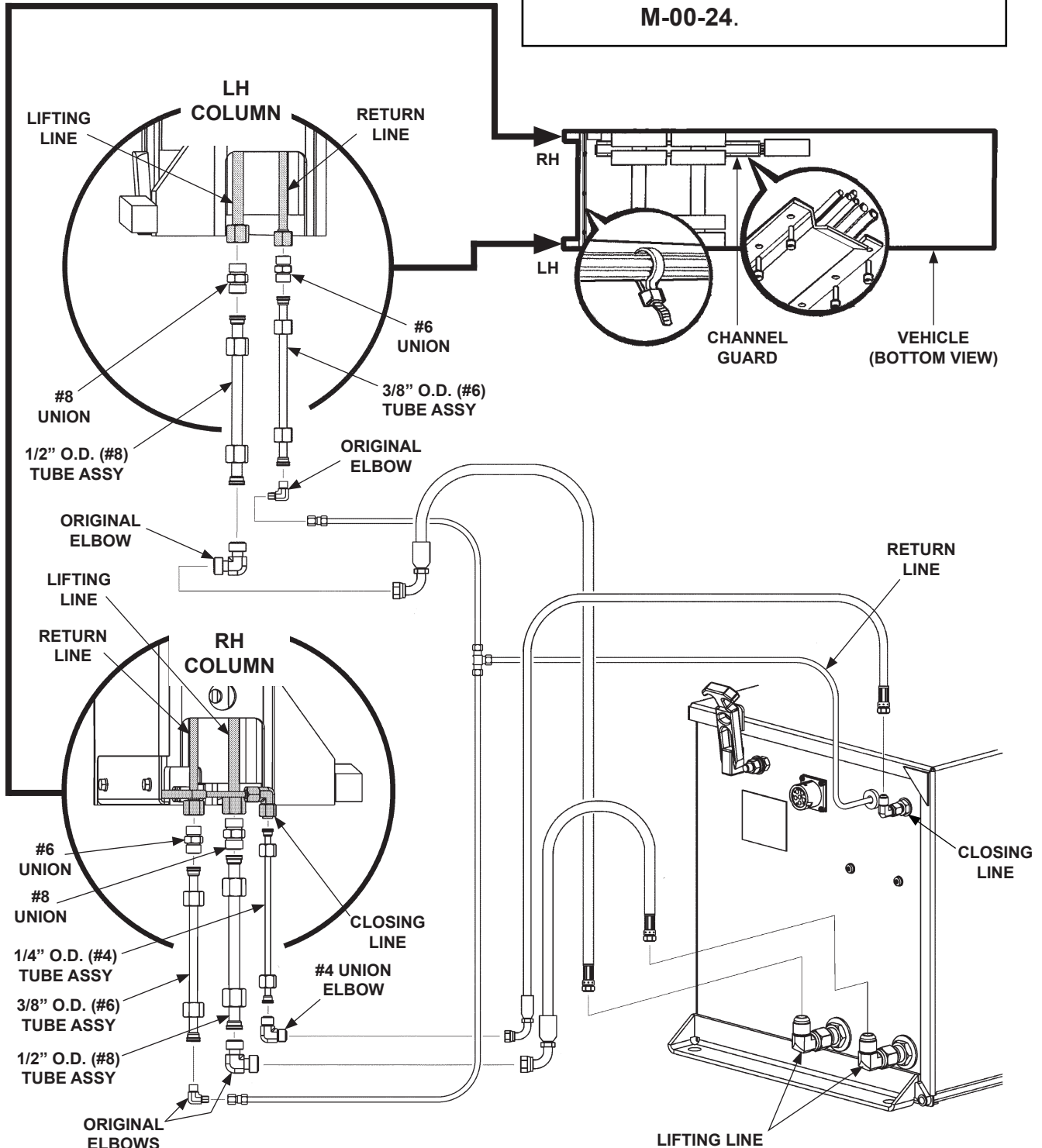
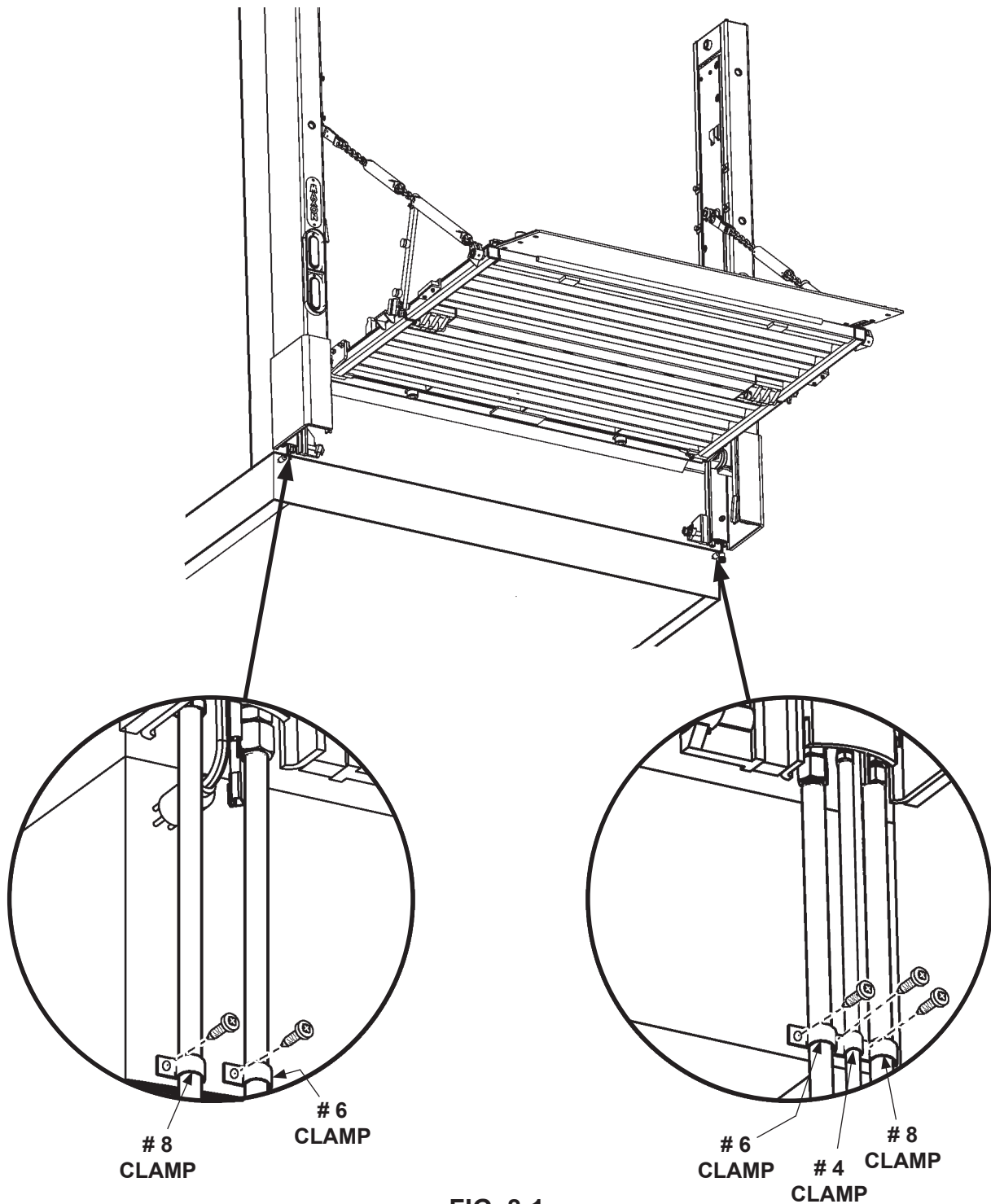


FIG. 7-1



**FIG. 8-1**

13. Get # 8 loom clamps for each of the (2) 1/2" O.D. tubes, # 6 loom clamps for the (2) 3/8" O.D. tubes, and # 4 loom clamp for the (1) 1/4" O.D. tube. Place loom clamp on each tube and mark a hole to fasten each clamp to vehicle body as shown in **FIG. 8-1**. Drill #20-size (.161") hole for each clamp. Fasten each of the 5 clamps to vehicle body with self-drilling screws.