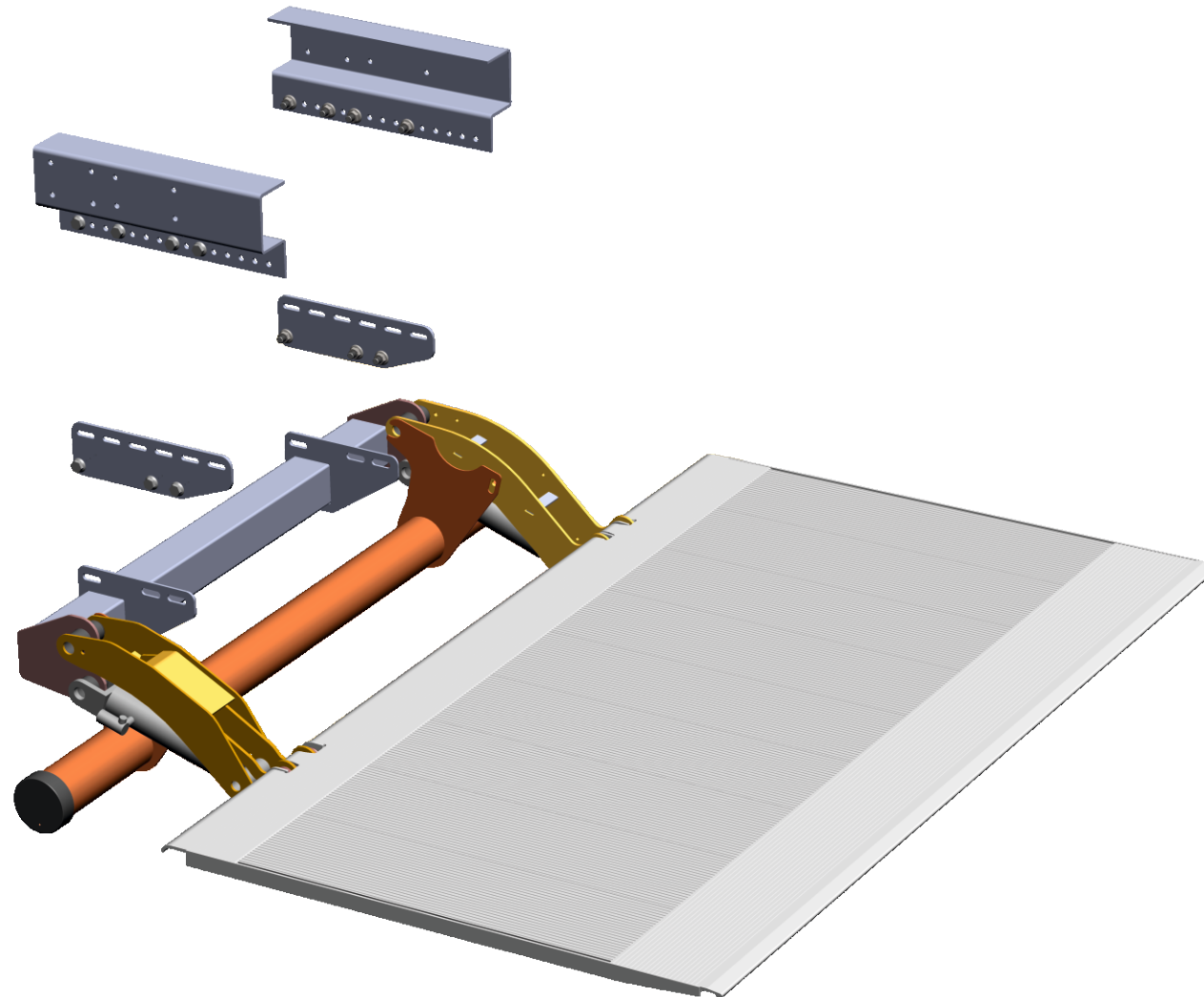


MAXON®

Spare Parts Catalogue GPC 17 X-1



Document no.: S 20 912 489
Version 2020

MAXON® Lift CORP.

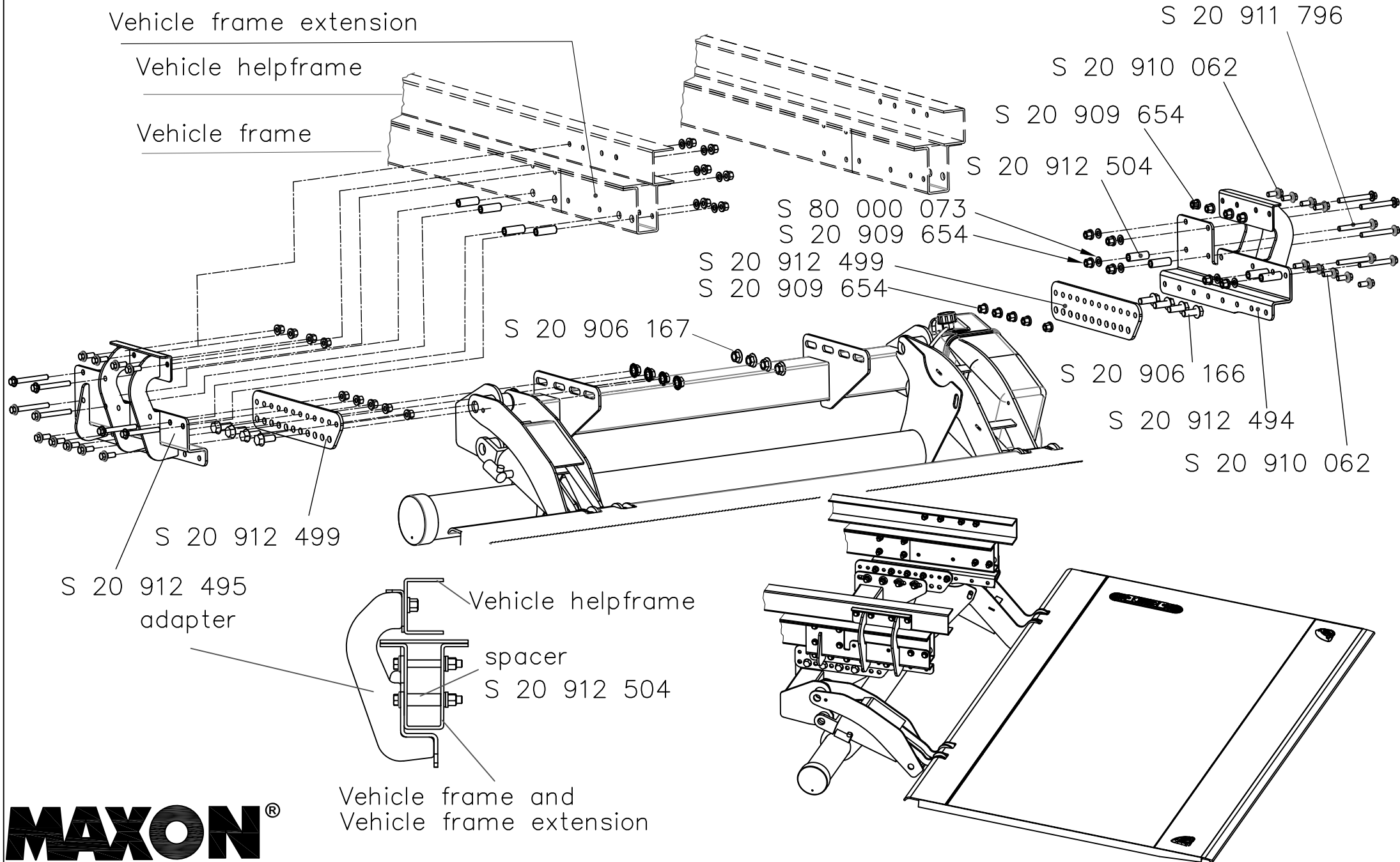
11921 Slauson Avenue. Santa Fe Springs, CA 90670 (800) 227 - 4116

Installation Adapter for Ford Transit year of manufacture since 2014

Vehicle frame extension

Vehicle helpframe

Vehicle frame

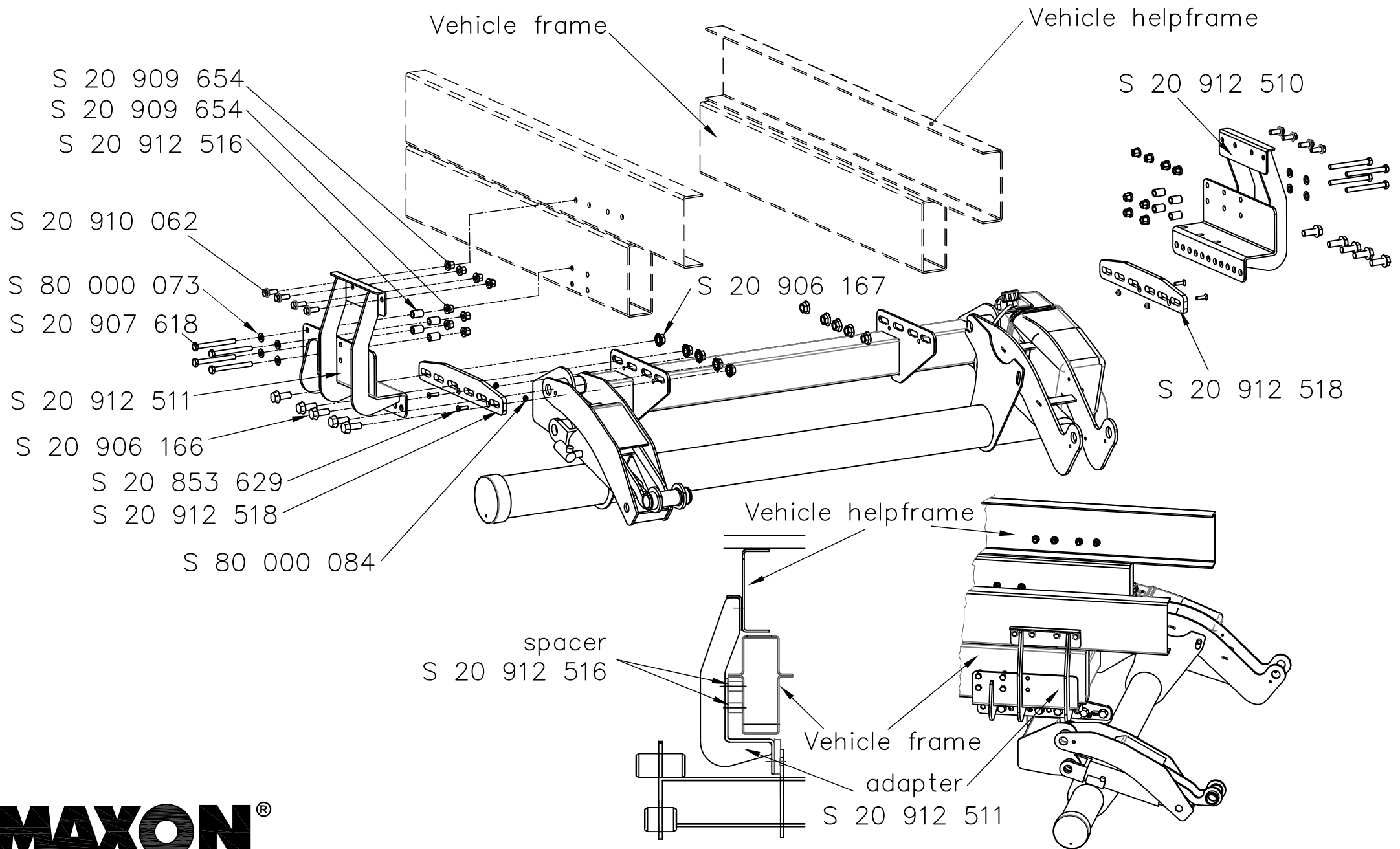


MAXON®

GPC 17 X-1

Document no.: S 20 912 489
version 12.05.2021

Installation Adapter for Mercedes Benz Sprinter

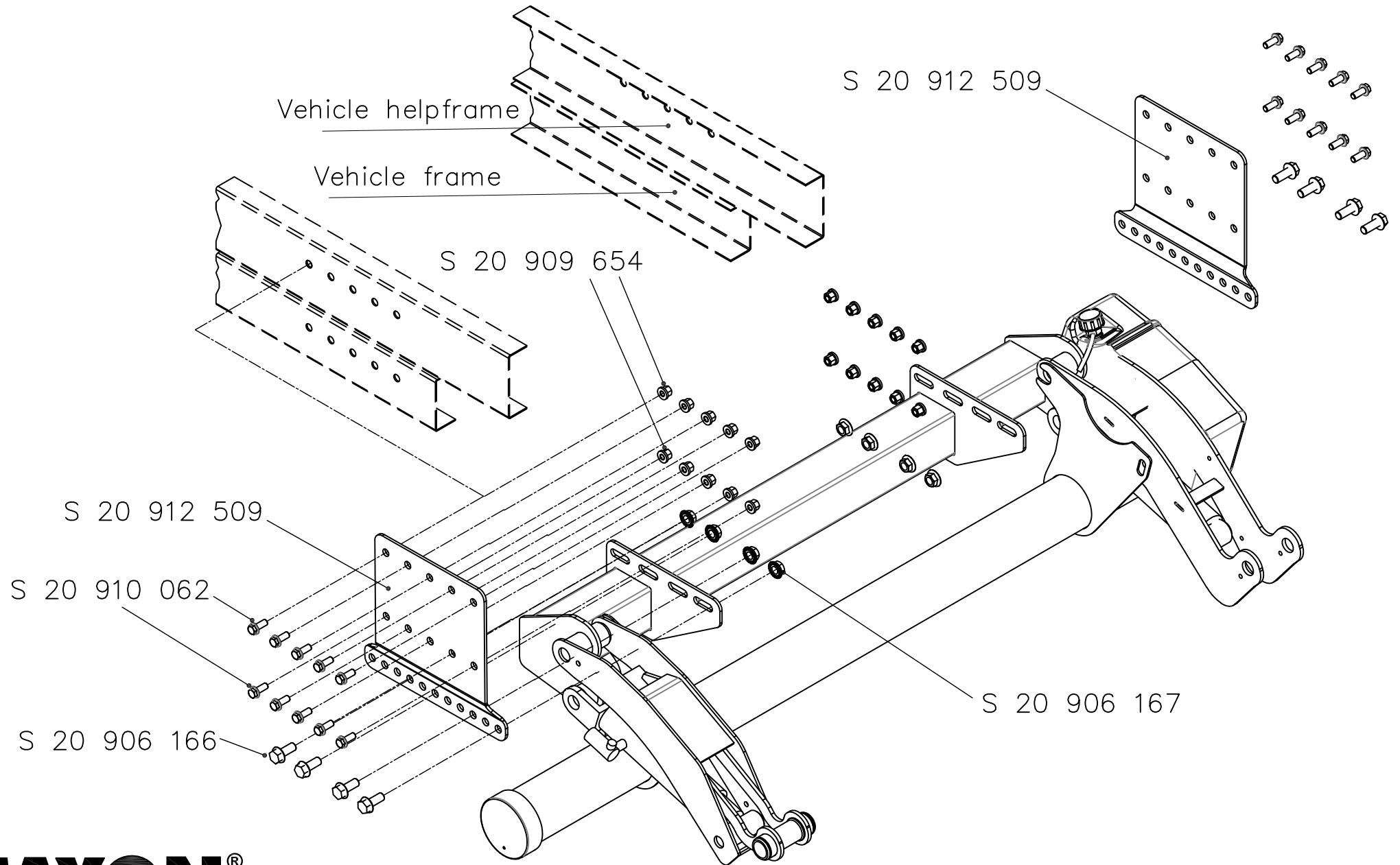


MAXON®

GPC 17 X-1

Document no.: S 20 912 489
version 05.2021

Installation Adapter for C-Frame (for Iveco Daily)

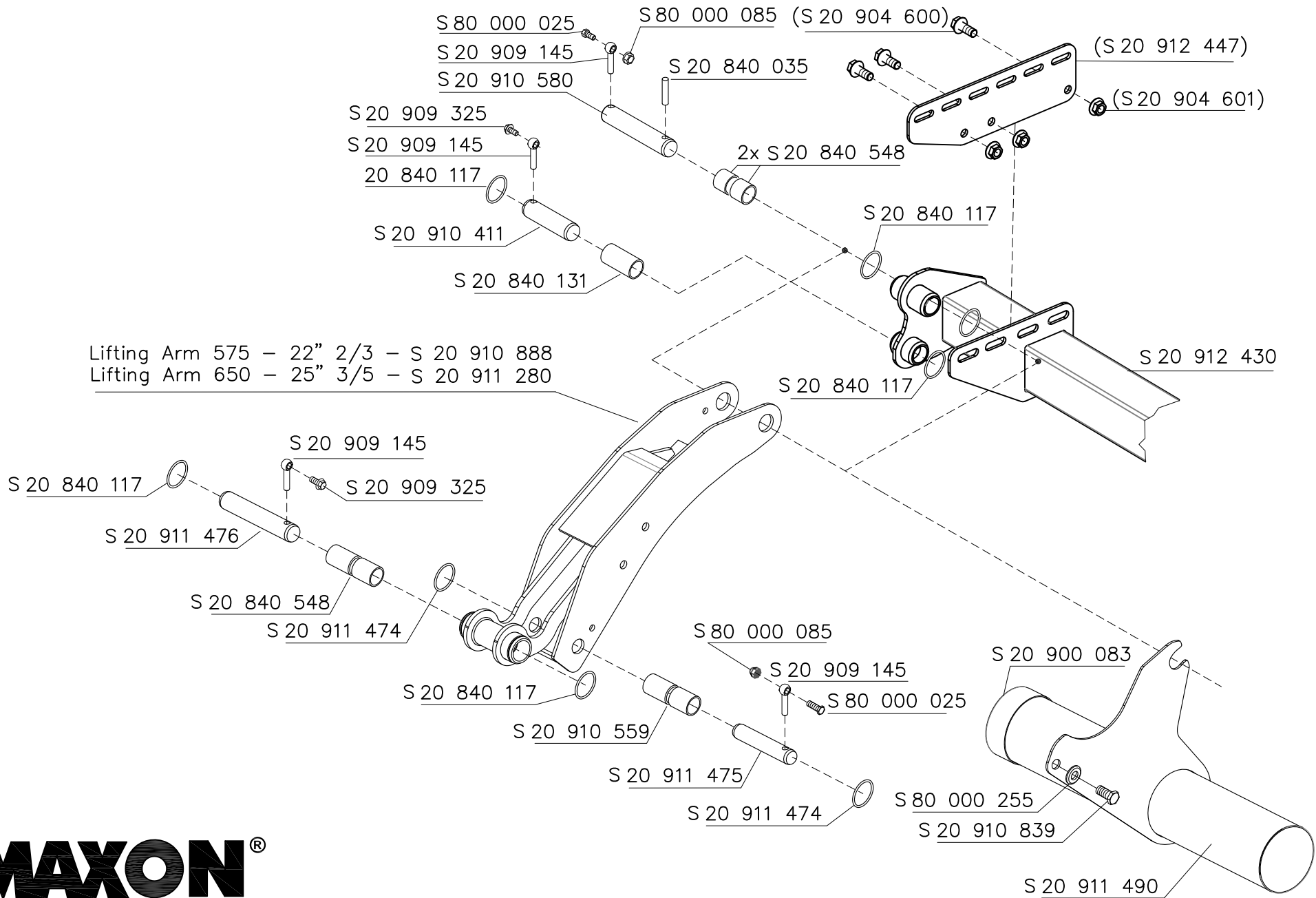


MAXON[®]

GPC 17 X-1

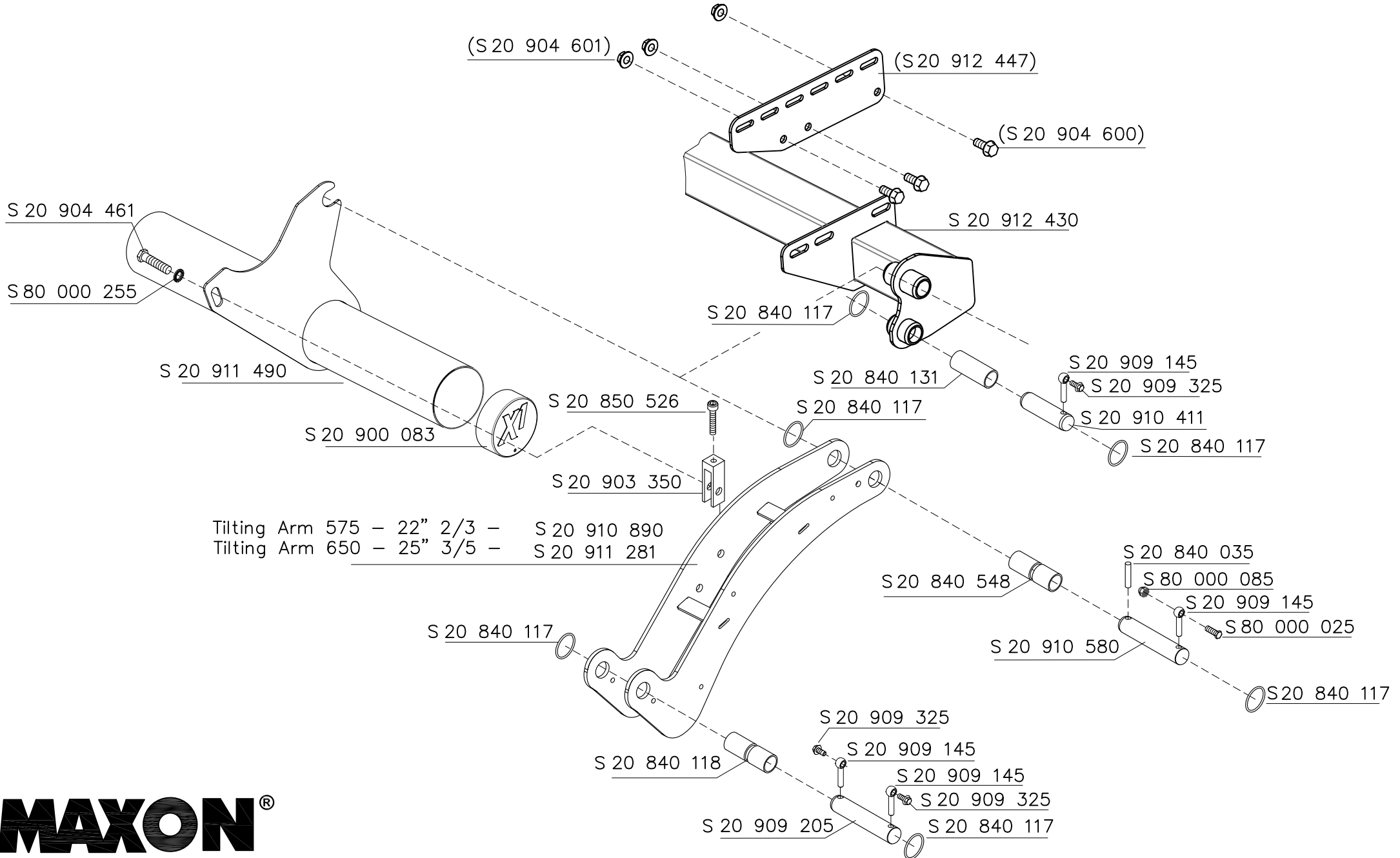
Document no.: S 20 912 489
version 05.2021

Lifting mechanism (left hand)
 Lifting Arm 22" 2/3 (575mm), 25" 3/5 (650mm)

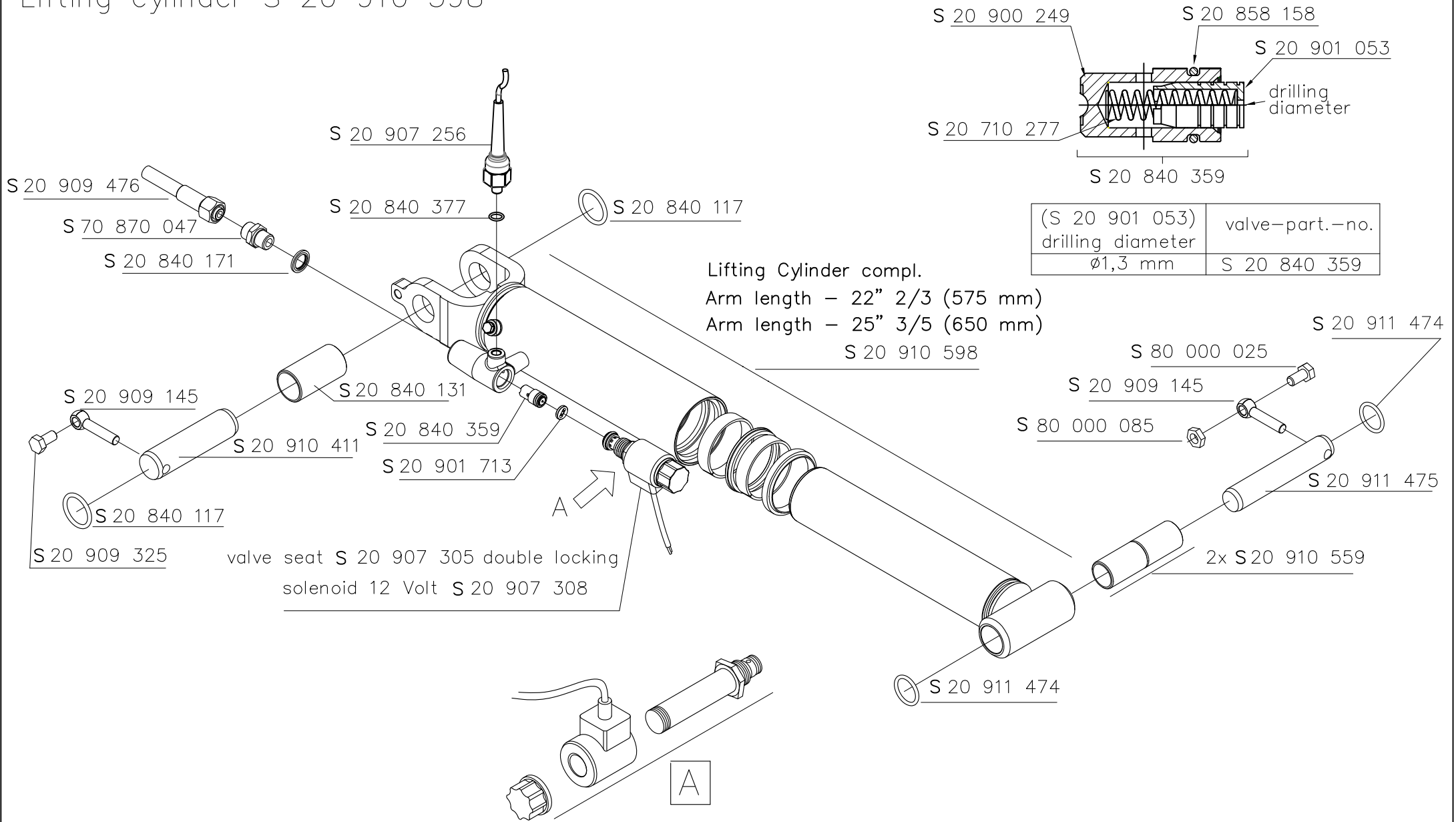


MAXON®

Lifting mechanism (right hand)
 Tilting Arm 22" 2/3 (575mm), 25" 3/5 (650mm)

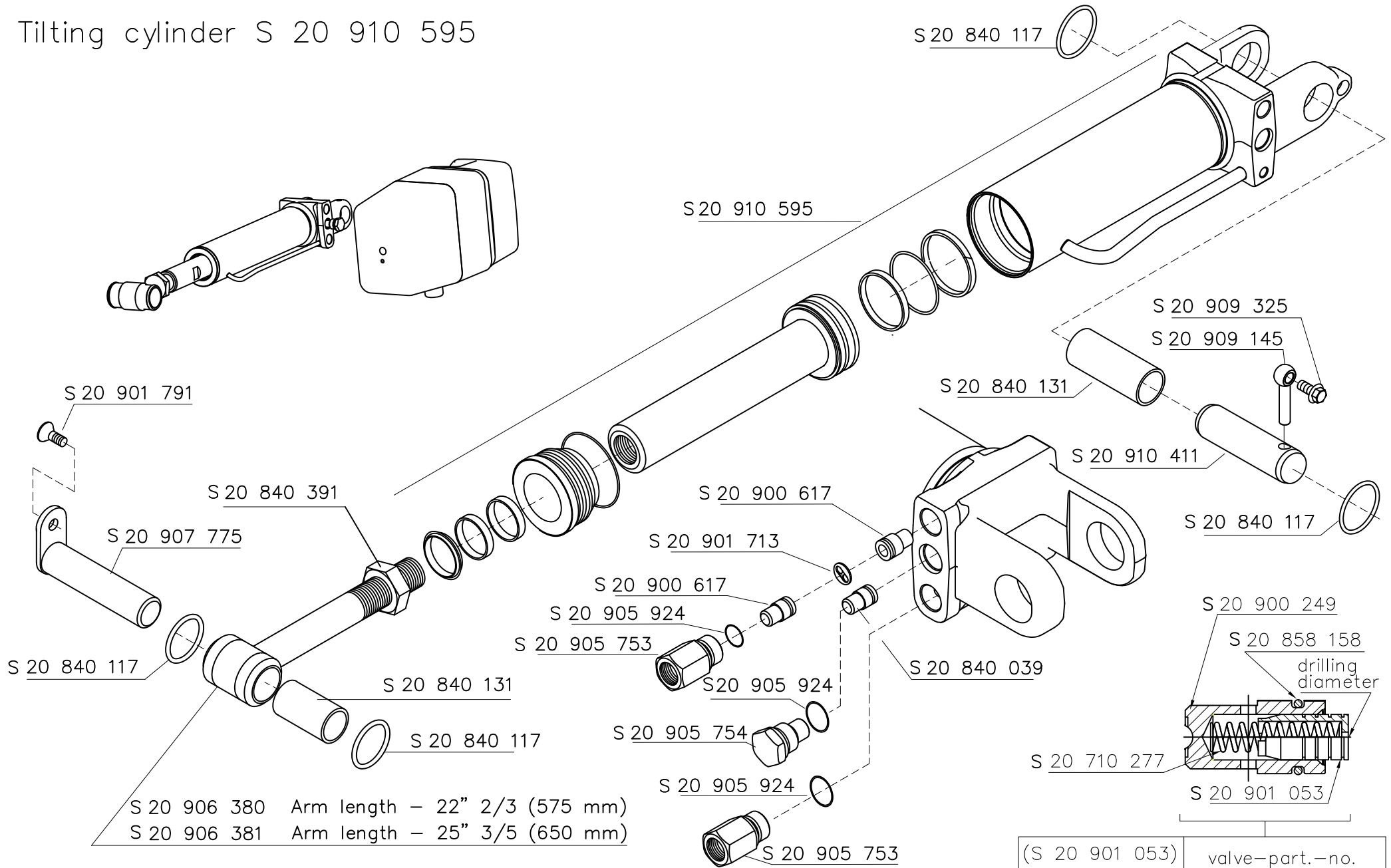


Lifting cylinder S 20 910 598



(S 20 901 053) drilling diameter	valve-part.-no.
ø1,3 mm	S 20 840 359

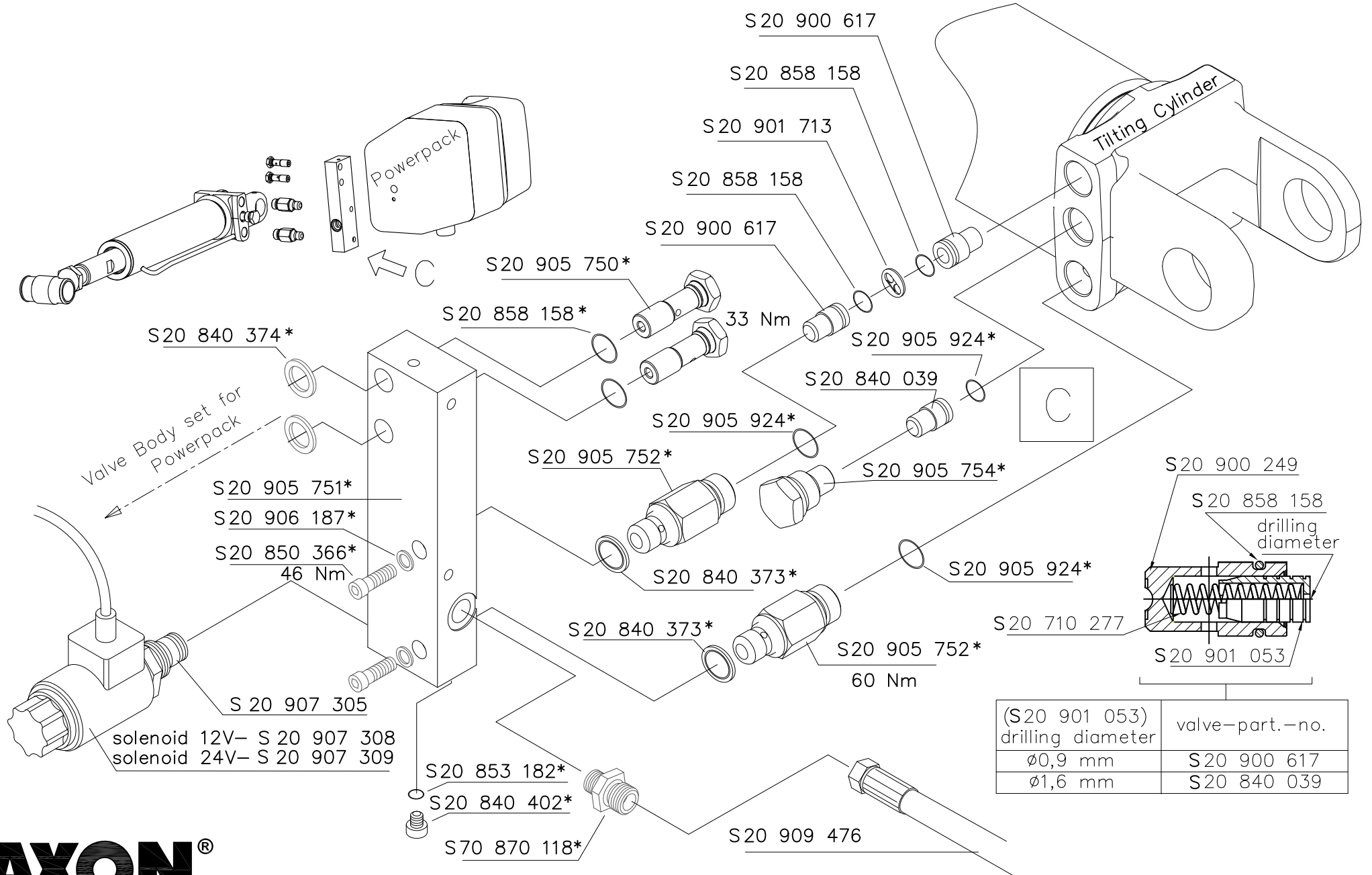
Tilting cylinder S 20 910 595



S 20 906 380 Arm length – 22" 2/3 (575 mm)
 S 20 906 381 Arm length – 25" 3/5 (650 mm)



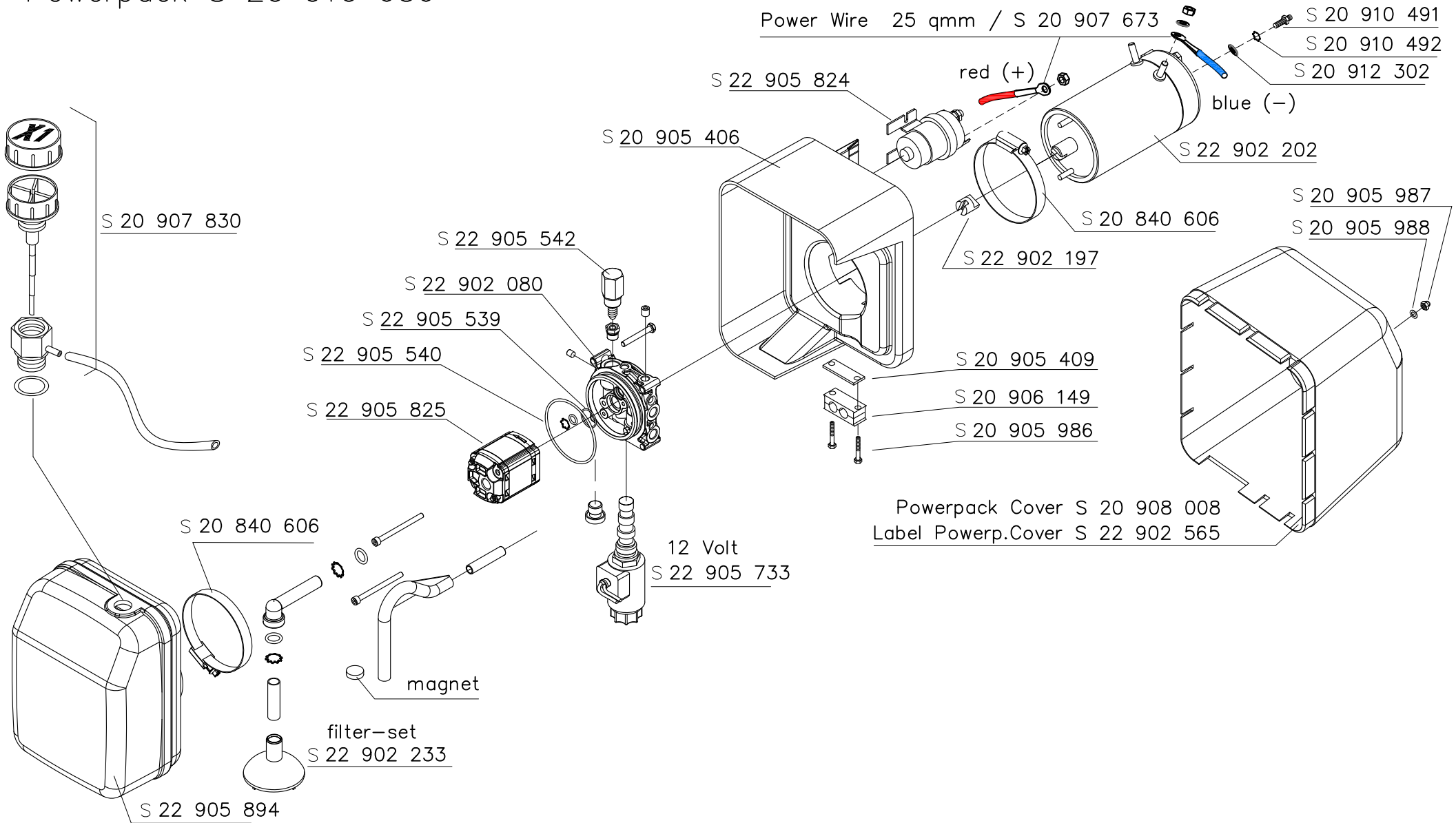
Valve Body set 20 907 829* on Tilting cylinder



MAXON[®]

GPC 17 X-1

Powerpack S 20 910 656



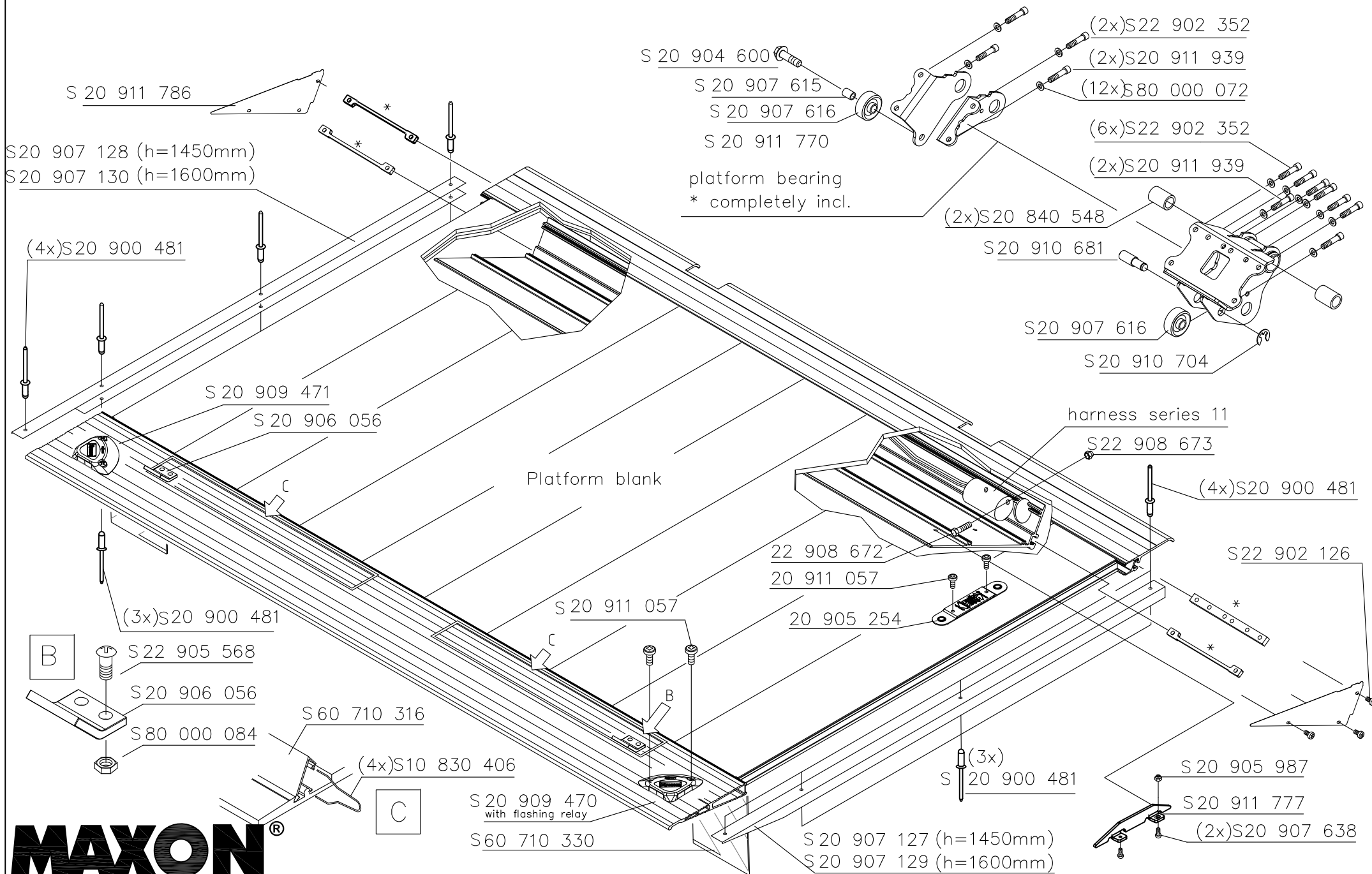
Power wire 25 qmm incl. fuse / S 20 906 653
Ground wire 25 qmm / S 20 906 654

MAXON®

GPC 17 X-1

Document no.: S 20 912 489
version 10.2020

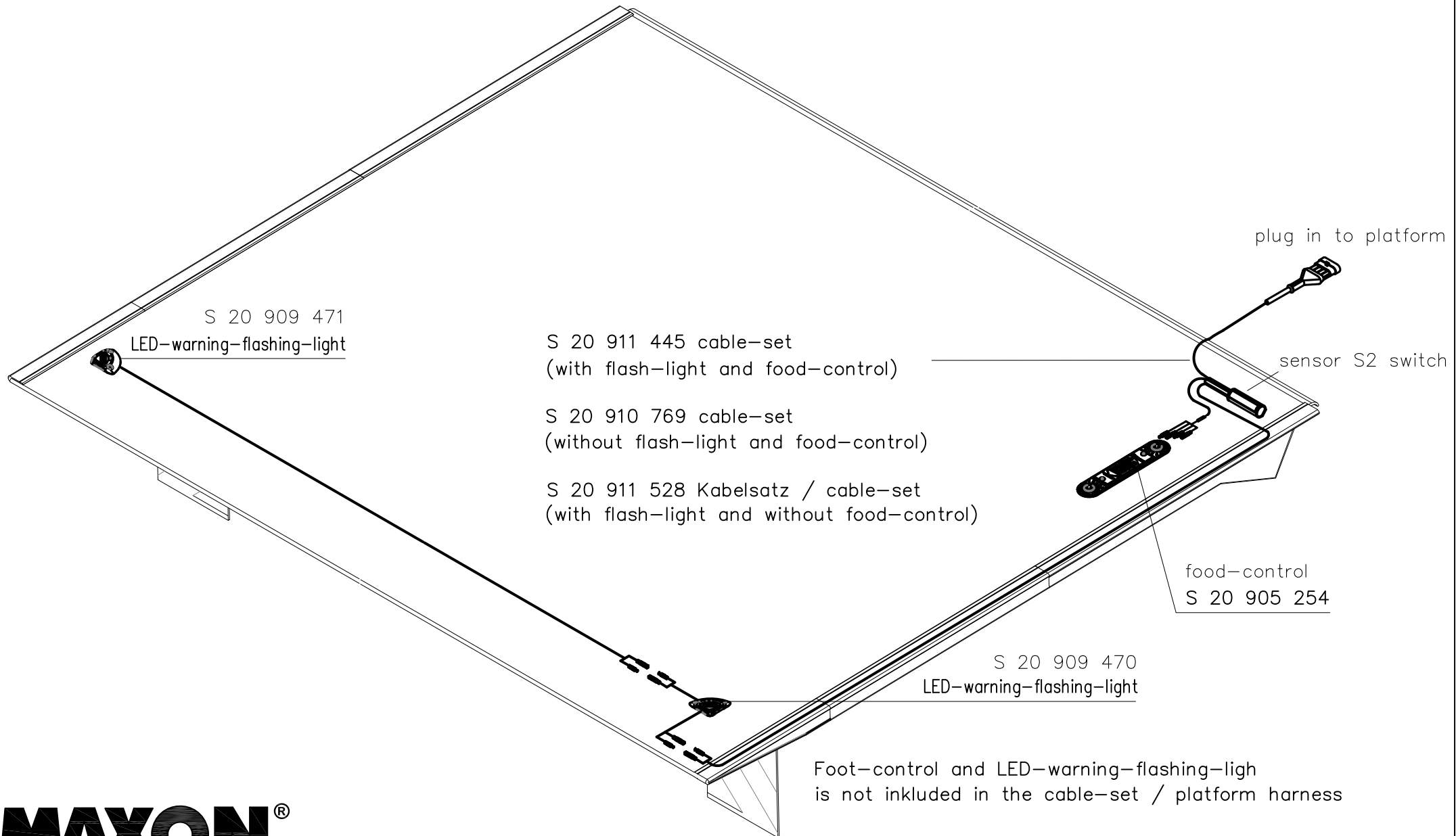
platform



MAXON®

GPC 17 X-1

platform set of cables at series 11, GPC X-1 and GPC X-4 standard



MAXON[®]

GPC X1 - X4 standard

Series 11
Stand 10.2020

Elektrical connection GPC X-1 and X-4 standard liftgate at series 11

Control-Unit with service switch Series 11
(in the powerpack) with plugs for harness

harness
Part.-No. S 20 911 365

option harness
Part.-No. S 20 911 494
for cabled remote

3-button cabled remote
Part.-No. S 20 911 191
2-button cabled remote
Part.-No. S 20 911 190

harness
Part.-No. S 20 911 364

*4 plug connection
2 or 3 button cabled remote

*3 connection plug
platform

*2 connection plug
MAXON control panel

MAXON control panel
Part.-No. S 20 912 464

*5 option harness
Part.-No. S 20 911 495
for radio control remote

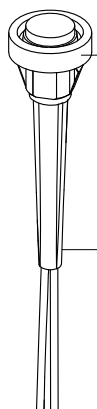
cabin switch on / off
for liftgate
Part.-No. S 20 906 974

option:
control-LED
Part.-No. S 20 905 547

*1 ETMA- connection plug
liftgate on / off switch

MAXON[®]

GPC X-1 and GPC X-4 standard Control Unit series 11, Control Panel

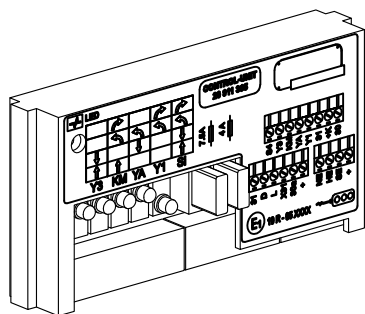


S 20 906 974

Wire

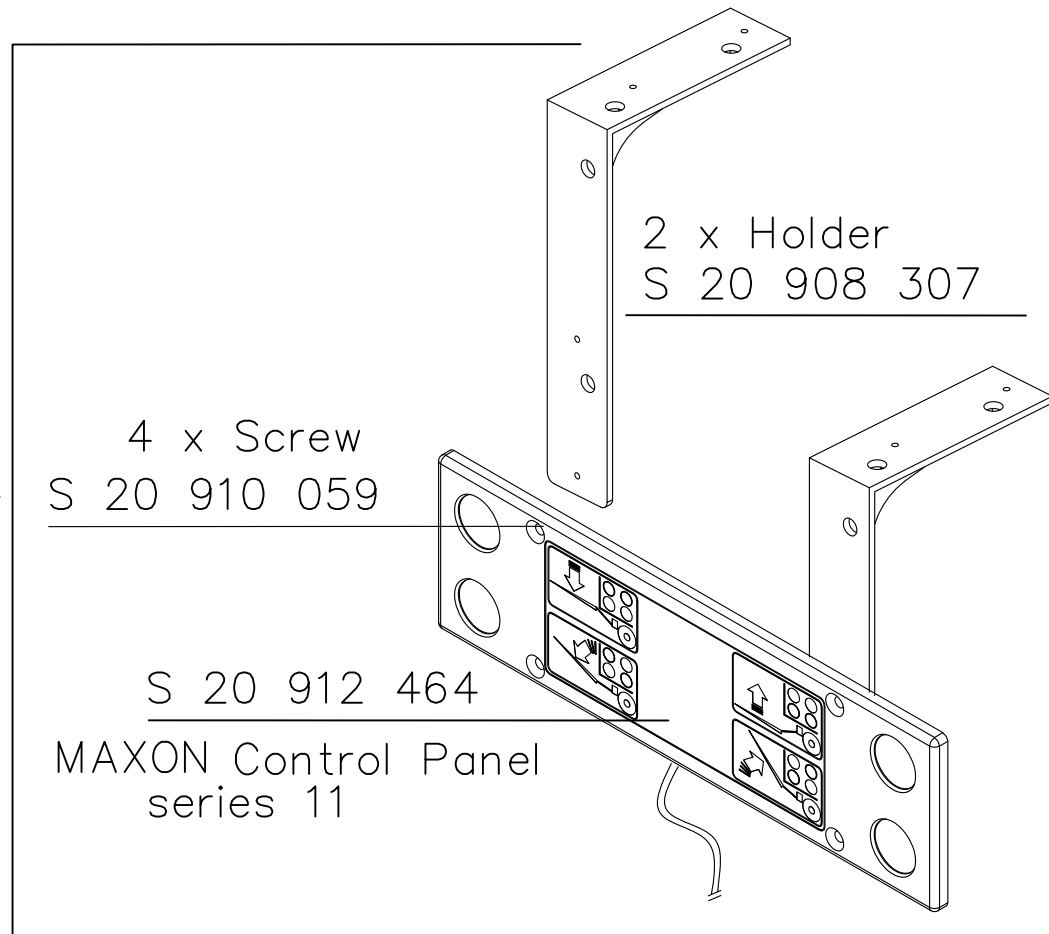
S 20 906 975

MAXON
Control Panel
with Screws
incl. Holder
S 20 912 465



S 20 912 567

MAXON
Control Unit Series 11
with Service Switch



2 x Holder
S 20 908 307

4 x Screw
S 20 910 059

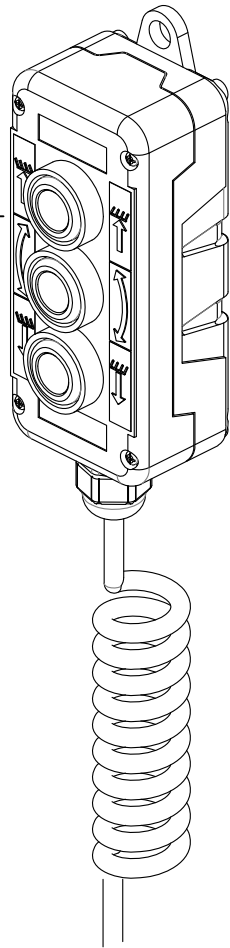
S 20 912 464

MAXON Control Panel
series 11

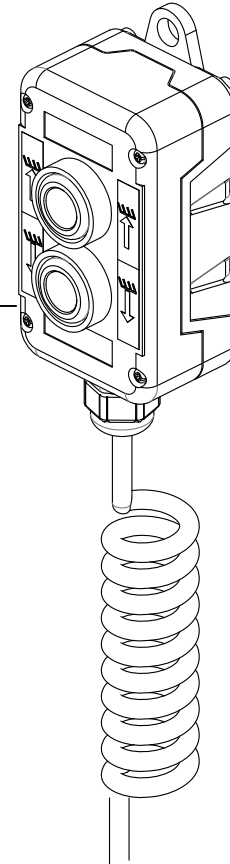
S 20 911 364 with out picture cable-set for Control Unit series 11

S 20 911 359 with out picture cable-set for Powerpack Series 11

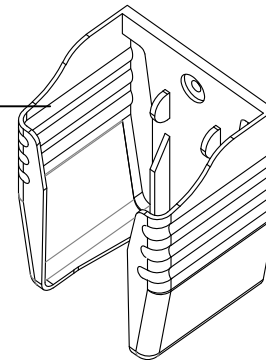
3-Button
cabled remote
S 20 911 191



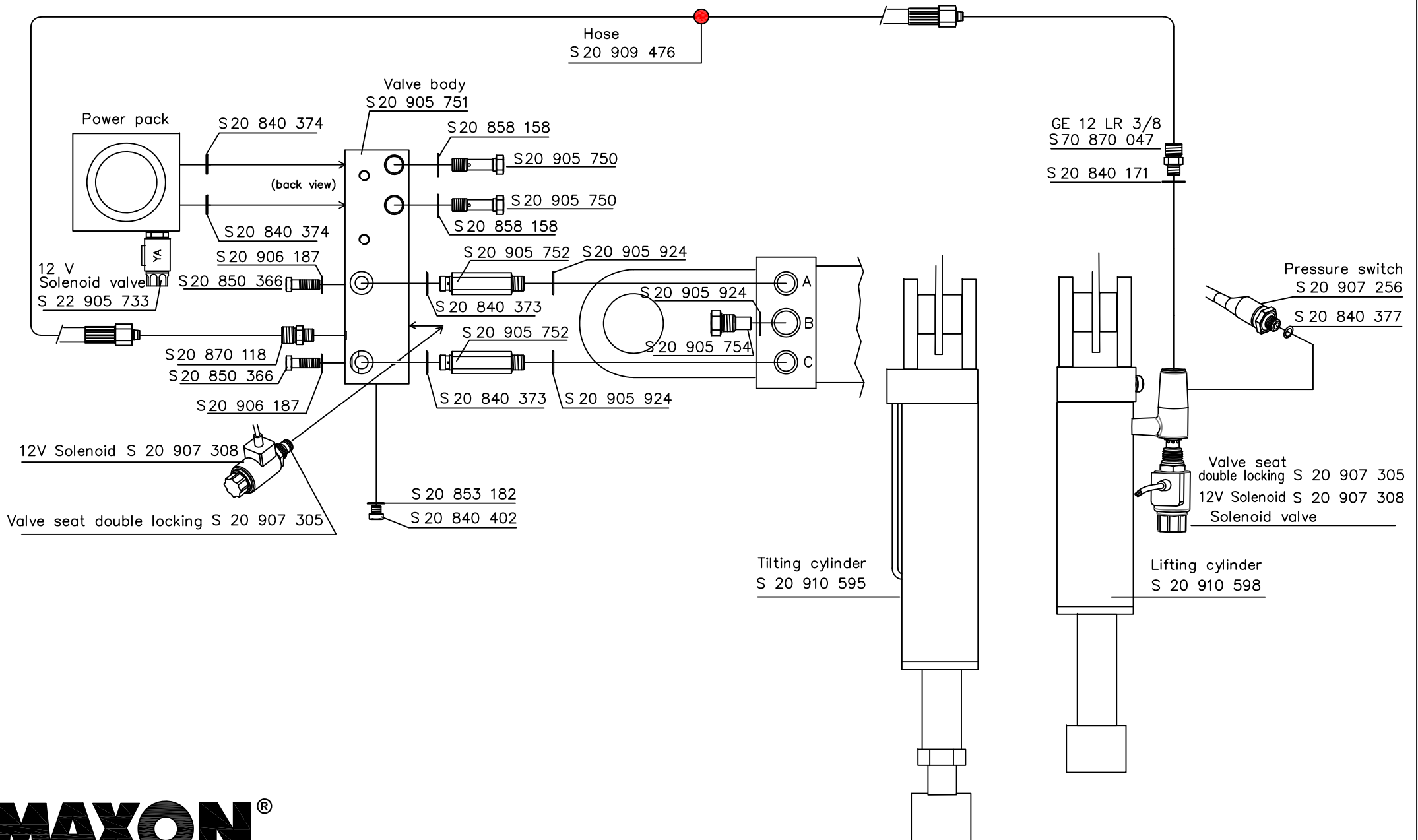
2-Button
cabled remote
S 20 911 190



Holder
S 22 905 783



Hydraulicfitting



MAXON®

GPC 17 X-1