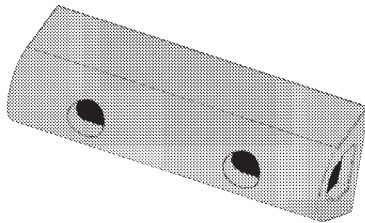
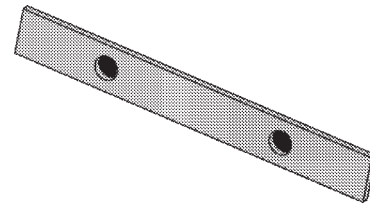
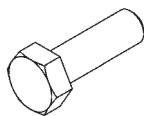


INSTRUCTIONS, MLA BUMPER KIT**P/N 212298-01**

D-SHAPE RUBBER BUMPER
P/N 212296-01
QTY. 4



BUMPER BACKING PLATE
P/N 212297-01
QTY. 4



CAP SCREW,
5/16"-18 X 1" LG, GRADE 8
P/N 900009-2
QTY. 8

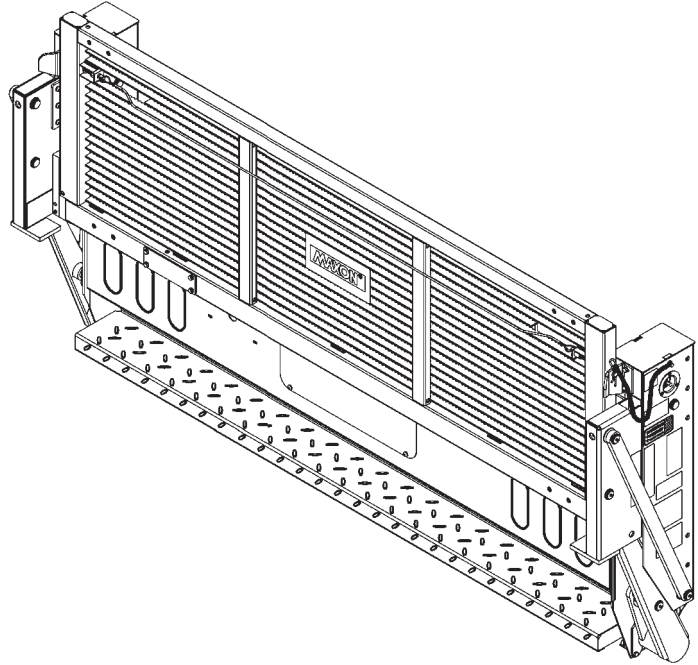


LOCK WASHER,
5/16" X 5/64" GRADE 8
P/N 902011-3
QTY. 8

⚠ CAUTION

To prevent platform from opening by accident, ensure platform is latched securely in stowed position before bumpers are installed.

1. Stow platform to gain access to the bumper mounting positions on bottom of the platform (**FIG. 2-1**). Refer to **MLA Operation Manual** for detailed operating instructions.

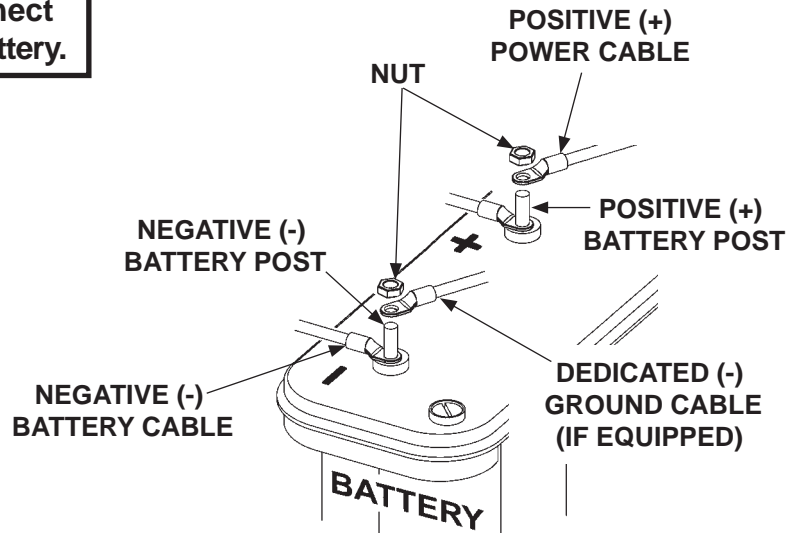


**PLATFORM STOWED
(STEEL GRATE PLATFORM SHOWN)
FIG. 2-1**

⚠ WARNING

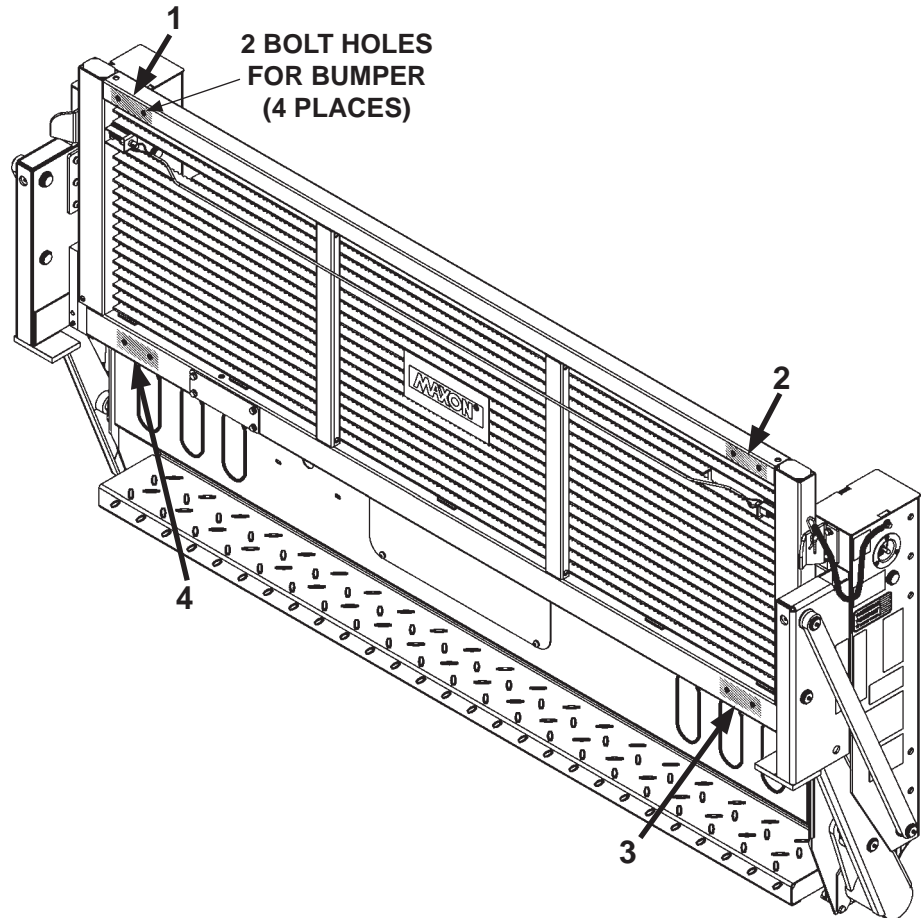
To prevent accidental personal injury and equipment damage, disconnect (-) negative and (+) cables from battery.

2. Disconnect power from the pump by disconnecting negative (-) and positive (+) cables from the battery (**FIG. 2-2**). Reinstall nuts on negative (-) and positive (+) battery terminals.



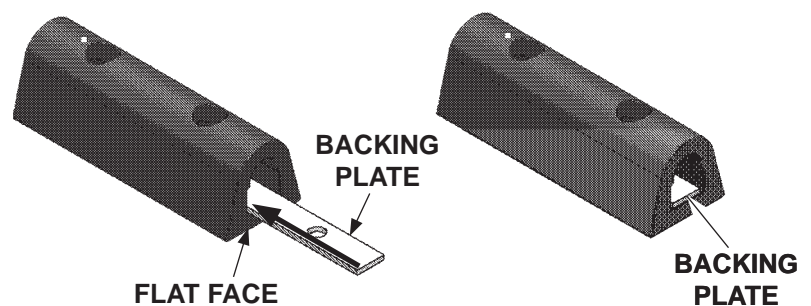
**DISCONNECTING BATTERY POWER
FIG. 2-2**

3. Determine which positions to mount bumpers on bottom surface of platform (**FIG. 3-1**).
- 4 bumpers (**FIG. 3-1** at 1, 2, 3 and 4)
 - 2 bumpers (**FIG. 3-1** at 1 and 2)
 - 2 bumpers (**FIG. 3-1** at 3 and 4)



**POSITIONS FOR BUMPERS ON PLATFORM
FIG. 3-1**

4. Insert backing plate against flat face on inside of each bumper (Kit items) to be installed **FIG. 3-2**. Align 2 holes in the backing plate with the 2 holes on the flat face of bumper.



**INSERTING BACKING PLATE IN BUMPER
FIG. 3-2**

5. Bolt 1 rubber bumper with backing plate to each position planned in step 3. Refer to **FIGS. 4-1 and 4-1A**. Tighten bolts securely, but do not overtighten. Repeat this step for 2nd, 3rd and 4th bumpers as planned in step 3.

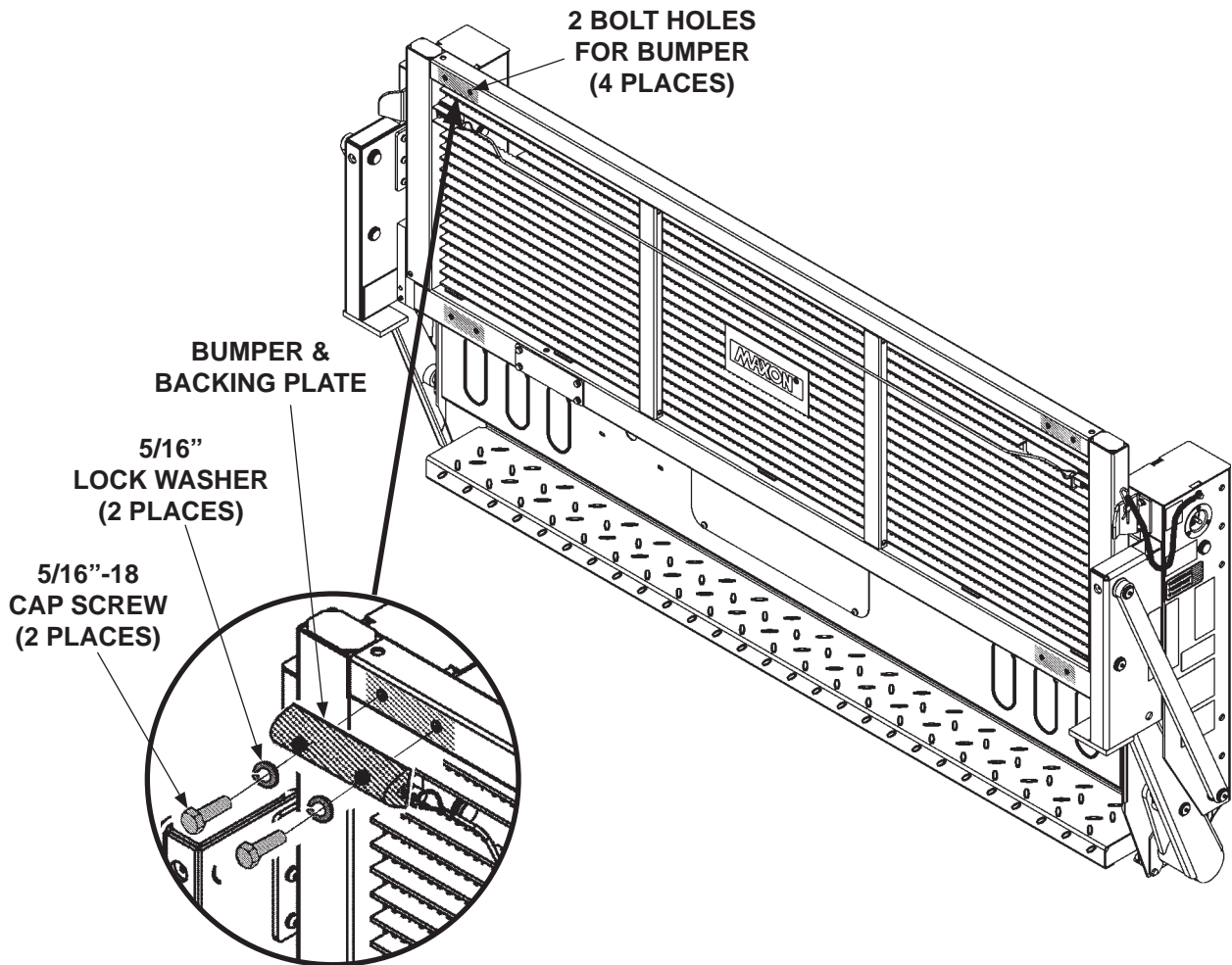
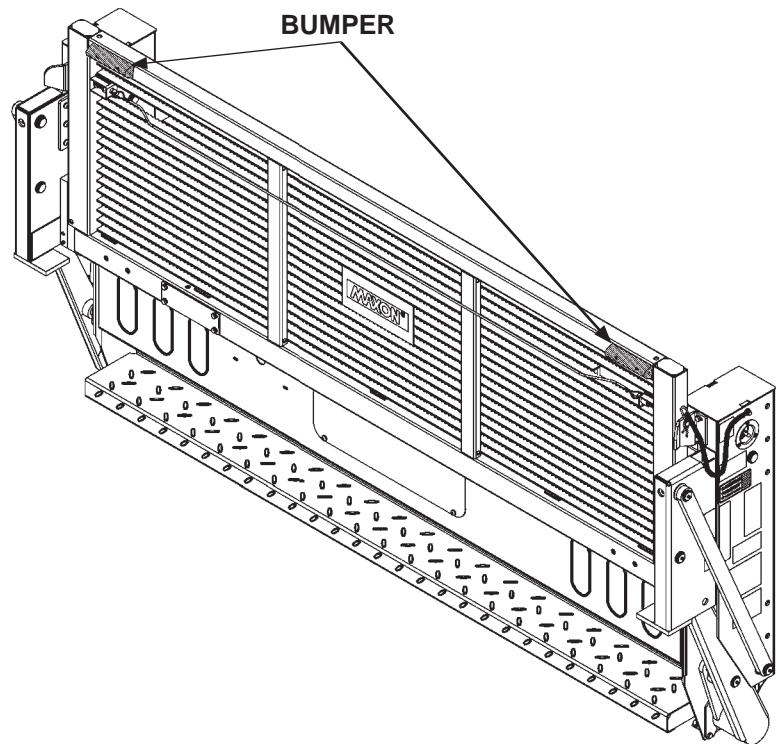


FIG. 4-1A

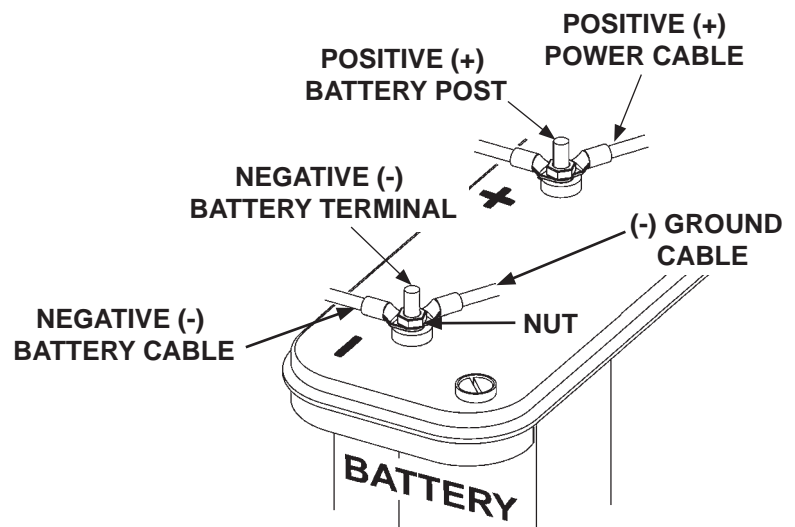
BOLTING BUMPERS ON PLATFORM
FIG. 4-1

6. Platform is shown in **FIG. 5-1** with bumpers installed at positions 1 and 2.



2 BUMPERS INSTALLED ON PLATFORM
FIG. 5-1

7. Remove nuts from negative (-) and positive (+) battery terminals. Reconnect power to the pump by reconnecting negative (-) and positive (+) cables to the battery (**FIG. 5-2**). Then, reinstall nuts on negative (-) and positive (+) battery terminals. Tighten nuts to secure the cable connections.



BATTERY POWER RECONNECTED
FIG. 5-2

NOTE: Refer to **MLA Operation Manual** for detailed operating instructions.

8. Unlatch, unfold and lower platform to the ground. Check if platform sits on the ground as expected. If necessary, repeat steps 1-3, 5, 7 and 8 to change positions of the bumpers and check results.