

# LIGHT DUTY SERIES

## C2-60SB Service Body

**MAXON®**



### C2-60SB SPECIFICATIONS

Introducing the all-new C2-60SB just like the liftgates you know, but at significantly reduced cost. The C2-60SB provides direct lifting with level ride and ramp options that increase loadable platform depth.

- C2-60SB liftgates are built with high performance and low maintenance in mind
- Oversized, fully enclosed pump and motor assembly helps ensure increased life and less downtime
- Maintenance-free bearings reduce the need for service

	Model No.	Load Area	Ramp	Bed Height Range	Weight
1300 lbs	<b>Steel Platform</b>				
	C2-60SB-1342 TP27	55" X 27"	4"	28" to 42"	460 lbs
	C2-60SB-1342 TP38	55" X 38"	4"		510 lbs
	C2-60SB-1342 TP42	55" X 42"	7"		535 lbs
	<b>Aluminum Platform</b>				
	C2-60SB-1342 EA27	55" X 27"	6"	28" to 42"	435 lbs
	C2-60SB-1342 EA38	55" X 38"	6"		465 lbs
	C2-60SB-1342 EA48	55" X 48"	6"		495 lbs
	<b>Grip Strut Steel Platform</b>				
	C2-60SB-1342 GS27	55" X 27"	4"	28" to 42"	460 lbs
<b>Bar Grate Steel Platform</b>					
C2-60SB-1342 BG27	55" X 27"	4"	28" to 42"	460 lbs	
1500 lbs	<b>Steel Platform</b>				
	C2-60SB-1542 TP27	55" X 27"	4"	28" to 42"	460 lbs
	C2-60SB-1542 TP38	55" X 38"	4"		510 lbs
	C2-60SB-1542 TP42	55" X 42"	7"		535 lbs
	<b>Aluminum Platform</b>				
	C2-60SB-1542 EA27	55" X 27"	6"	28" to 42"	435 lbs
	C2-60SB-1542 EA38	55" X 38"	6"		465 lbs
	C2-60SB-1542 EA48	55" X 48"	6"		495 lbs
	<b>Grip Strut Steel Platform</b>				
	C2-60SB-1542 GS27	55" X 27"	4"	28" to 42"	460 lbs
<b>Bar Grate Steel Platform</b>					
C2-60SB-1542 BG27	55" X 27"	4"	28" to 42"	460 lbs	

NOTE: Platforms TP27, EA27, GS27, BG27 are single piece platforms.  
Models for Bodies With 51" - 55" Opening



Maxon Lift Corp. 11921 Slauson Ave., Santa Fe Springs, CA 90670  
800.227.4116 Fax 888.771.7713, [www.maxonlift.com](http://www.maxonlift.com)

# LIGHT DUTY SERIES

## C2-60SB Service Body

**MAXON®**

### C2 standard features

- "SB" versions are 60" wide
- Dual hydraulic lifting cylinders
- Maintenance-free components
- Protected / recessed main control with time-out feature
- Steel and aluminum platforms
- Painted
- Fully-enclosed hydraulic system
- Patent Pending Pre-Punched Holes for Camera/Sensors
- Gravity down only

### Optional features

- Hot Dip Galvanized Finish (at no additional charge)
- Light Kits
- Remote Pendant Control
- Rubber Platform Protection Bumpers
- Folding Tire Rack Kit



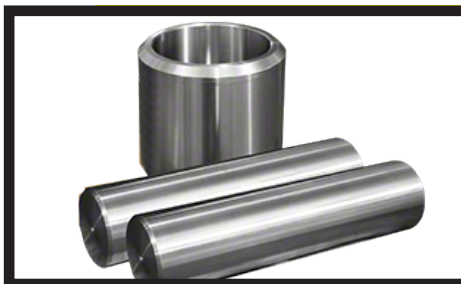
### Enclosed Pump & Motor Assembly

The C2 pump and motor assembly is fully enclosed and shielded from the elements.



### Main Control with Time-Out Feature

A timed toggle control prevents unauthorized use. It automatically deactivates 90 seconds after operation.



### Maintenance Free Pins & Bushings

Maintenance free pins and bushings allow for years of maintenance free service.



### Power Cable with Full Length Ground

The dedicated ground cable helps to get the maximum lifespan out of the vehicle's battery.

**Distributed by:**

M-300-0925



Maxon Lift Corp. 11921 Slauson Ave., Santa Fe Springs, CA 90670  
800.227.4116 Fax 888.771.7713, [www.maxonlift.com](http://www.maxonlift.com)