

CONVENTIONAL SERIES **MAXON**[®]

The GPC Series

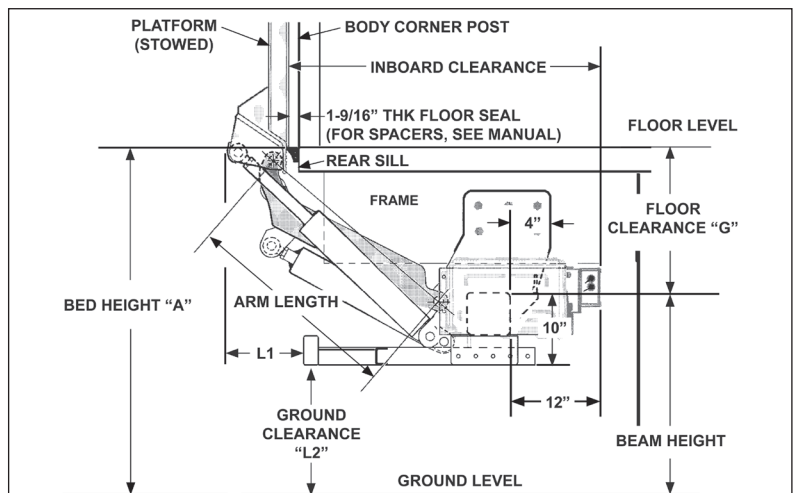


GPC SPECIFICATIONS

The GPC 22/33/44 is the first North American designed and manufactured cantilever style liftgate. MAXON's new GPC comes in a variety of platform sizes, in both aluminum and steel versions, and can accommodate a wide range of bed height requirements

- Excellent load / platform stability due to 2 tilt and 2 lift cylinders
- Platform can be leveled at any position with the standard controls
- All pivot points are fitted with greaseable bearings
- Heavy duty motor with thermal protection
- Lock valves used on all cylinders
- Exposed cylinders are weather protected with a rigid cover and a rubber sleeve
- Bolt-on installation plates for quick and simple installation (can be welded as well)
- Dual cart stops are standard

MODEL CAPACITY	PLATFORM SIZE	PLATFORM MATERIAL	TOTAL WEIGHT	BED HEIGHT**
GPC-22* (2200 Lbs.)	46" x 94.5", 98.5"	AL	1050 lb - 1080 lb	37.4" LADEN to 60.4" UNLADEN
	55" x 94.5", 98.5"	AL	1050 lb - 1100 lb	
	48" x 94.5", 98.5"	Steel	1150 lb - 1190 lb	
GPC-33* (3300 Lbs.)	64" x 94.5", 98.5"	AL	1110 lb - 1140 lb	
	73" x 94.5", 98.5"	AL or Steel	1150 lb - 1170 lb / 1360 lb - 1380 lb	
	82" x 94.5", 98.5"	AL	1190 lb - 1230 lb	
GPC-44* (4400 Lbs.)	85" x 94.5", 98.5"	Steel	1460 lb - 1510 lb	
	82" x 94.5", 98.5"	AL	1250 lb - 1320 lb	
	91" x 94.5", 98.5"	AL	1280 lb - 1350 lb	
	73" x 94.5", 98.5"	Steel	1420 lb - 1490 lb	
	85" x 94.5", 98.5"	Steel	1520 lb - 1600 lb	
	96" x 94.5", 98.5"	Steel	1600 lb - 1670 lb	



LENGTH OF LIFT ARMS	BED HEIGHT MAX. TO MIN. (UNLADEN)	FLOOR CLEARANCE (MIN. TO MAX.)	BEAM HEIGHT (MIN. TO MAX.)	INBOARD CLEARANCE (MIN. TO MAX.)	UNDERRIDE POSITION L1	UNDERRIDE GND CLEARANCE L2
1000MM (39.4") Long Arm 52-5/16" laden to 60-3/8" unladen	60.4" TO 56.3"	29.3" TO 25.3"	27.0" TO 31.0"	40.3" TO 45.7"	8.2" TO 11.9"	17.2" TO 21.7"
875MM (34.4") Medium Arm 42-5/16" laden to 56-9/16" unladen	56.6" TO 48.6"	25.8" TO 17.8"	24.6" TO 30.8"	43.6" TO 49.9"	4.8" TO 11.2"	14.7" TO 21.0"
750MM (29.5") Short Arm 37-3/8" laden to 49-9/16" unladen	49.6" TO 42.8"	22.2" TO 15.3"	22.1" TO 27.5"	47.0" TO 50.7"	5.4" TO 10.9"	12.2" TO 17.6"

* Note: Rated Capacity at 24 Inches from the Body Edge of the Platform. Please Refer to Operations Manual for Lifting Capacities at Larger Distances.

** Note: based on 3 different arm lengths see installation manual or chart to right for proper arm length

Mounting Requirements

NOTE: Please review appropriate liftgate installation manual for full vehicle and or body requirements to ensure proper fitment.



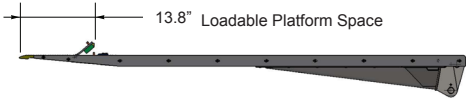
CONVENTIONAL SERIES **MAXON**[®]

The GPC Series

Optional Features

- Platform Seal Kit*
- Cab Cut-Off Switch
- Platform auto-tilt feature
- Flip Up Door Kit

Loadable Platform Space with Cart Stops Deployed



*Seals left and right sides of platform only.



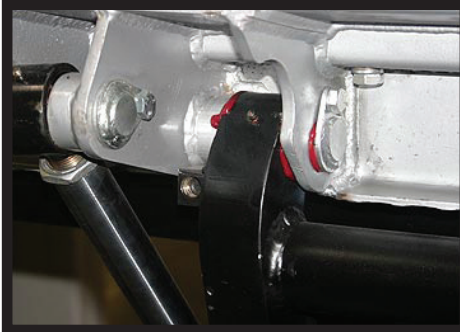
External Control

The external control station consists of prewired push button controls mounted to a stainless steel bracket. The control features easily identified push buttons for Up, Tilt and Down and is waterproof and dustproof to IP67 level.



Internal Control

The internal control consists of a pre-wired handheld control fitted with extendable coiled cable with plug in connector and socket for easy connection/disconnection. The control features easily identified push buttons for Up, Tilt and Down and is waterproof and dustproof to IP67 level. A stainless steel mounting bracket allows easy stowage and protection of the handheld control within the vehicle body.



Greaseable Bearings

All pivot points are fitted with lubrication points to allow re-lubrication of the bearings during lift maintenance programs.



Cylinder with Locking Valve

All cylinders are fitted with electric solenoid operated double lock valves, that prevent any flow of oil into or out of the cylinder unless commanded by the operator.

Distributed by:

MAXPRO[®]
MAXIMUM PROTECTION PAINT

MAXPRO[®] Paint

This patented, Maxon exclusive paint process has a tough polyurea top coat and an AL rich primer that combat corrosion and keep the liftgate looking like new.

M-169-1116



Maxon Lift Corp. 11921 Slauon Ave., Santa Fe Springs, CA 90670
800.227.4116 Fax 888.771.7713, www.maxonlift.com