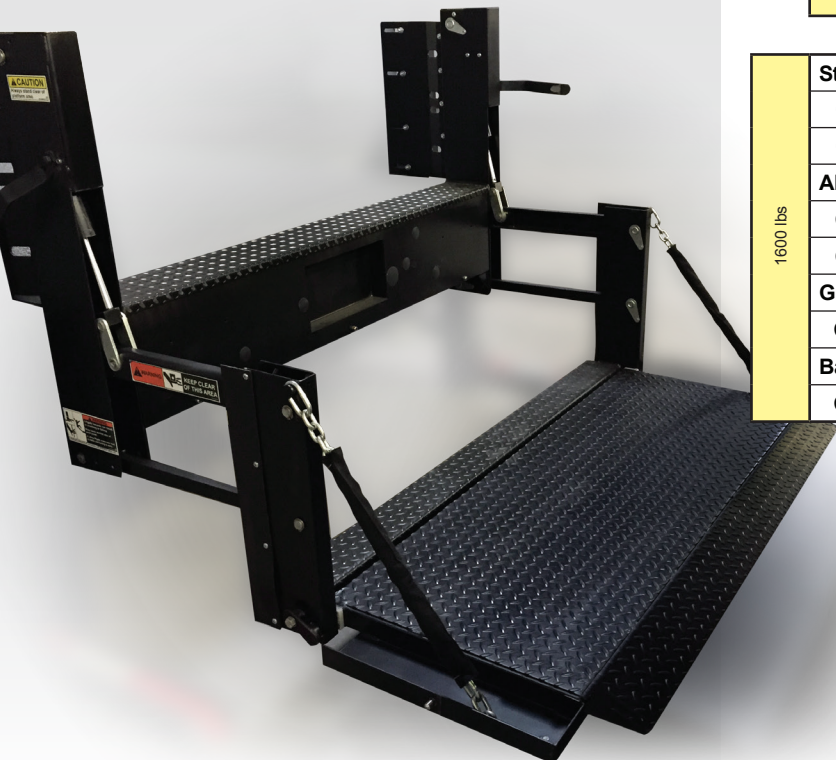
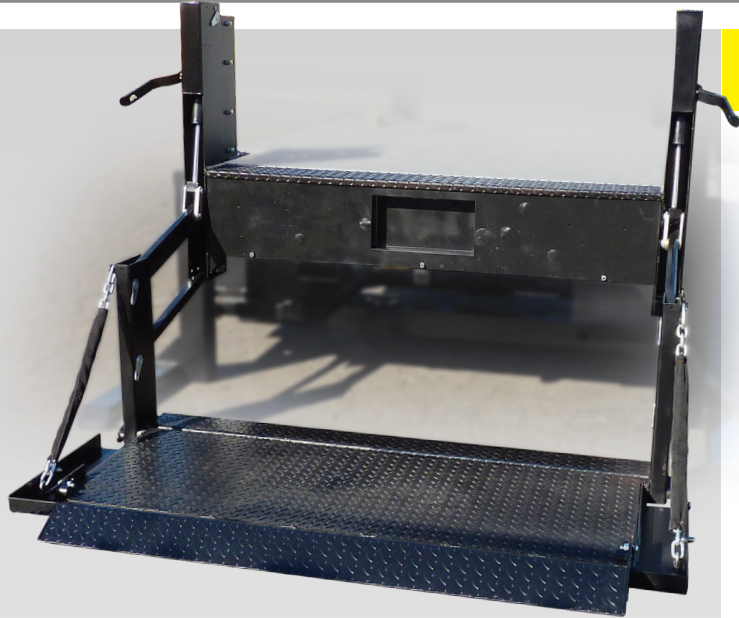


# Me2 SERIES

## Stakebed & Van Body



### Me2 SPECIFICATIONS

Introducing the all-new Me2 just like the liftgates you know, but at significantly reduced cost. The Me2 provides direct lifting with level ride and ramp options that increase loadable platform depth.

- Me2 liftgates are built with high performance and low maintenance in mind
- Oversized, fully enclosed pump and motor assembly helps ensure increased life and less downtime
- Maintenance-free bearings reduce the need for service

Model No.	Load Area	Ramp	Travel	Weight
<b>Steel Platform</b>				
C2-92-1650 TP35	87" X 35"	6"	30" to 50"	628 lbs
C2-92-1650 TP41	87" X 41"	6"		655 lbs
<b>Aluminum Platform</b>				
C2-92-1650 EA37	87" X 37"	6"	30" to 50"	561 lbs
C2-92-1650 EA41	87" X 41"	6"		577 lbs
<b>Grip Strut Platform</b>				
C2-92-1650 GS33	87" X 33"	6"	30" to 50"	628 lbs
<b>Bar Grate Platform</b>				
C2-92-1650 BG33	87" X 41"	6"	30" to 50"	628 lbs

1600 lbs



# Me2 SERIES

## Stakebed & Van Body

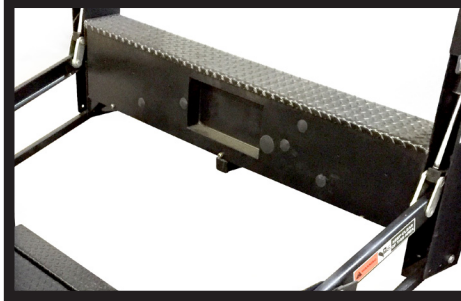
**MAXON®**

### Me2 standard features

- Dual hydraulic lifting cylinders
- Maintenance-free components
- Protected / recessed main control with time-out feature
- Steel or aluminum platforms
- Fully-enclosed hydraulic system

### Optional features

- Light Kits
- Remote Pendant Control
- Rubber Platform Protection Bumpers
- Tire Rack Kit



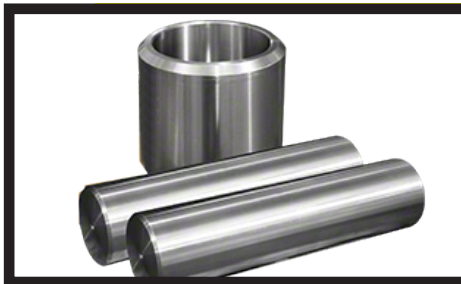
### Enclosed Pump & Motor Assembly

The Me2 pump and motor assembly is fully enclosed and shielded from the elements.



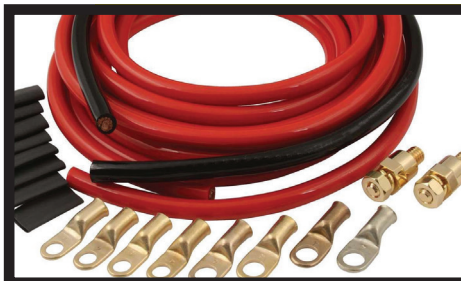
### Main Control with Time-Out Feature

A timed toggle control prevents unauthorized use. It automatically deactivates 90 seconds after operation.



### Maintenance Free Pins & Bushings

Maintenance free pins and bushings allow for years of maintenance free service.



### Power Cable with Full Length Ground

The dedicated ground cable helps to get the maximum lifespan out of the vehicles battery.

**Distributed by:**

M-213-0716



Maxon Lift Corp. 11921 Slauson Ave., Santa Fe Springs, CA 90670  
800.227.4116 Fax 888.771.7713, [www.maxonlift.com](http://www.maxonlift.com)