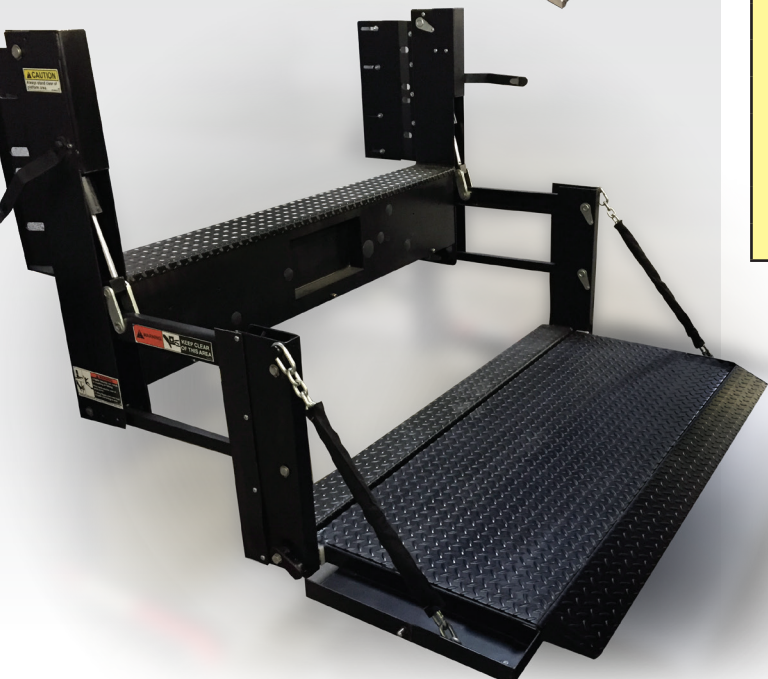
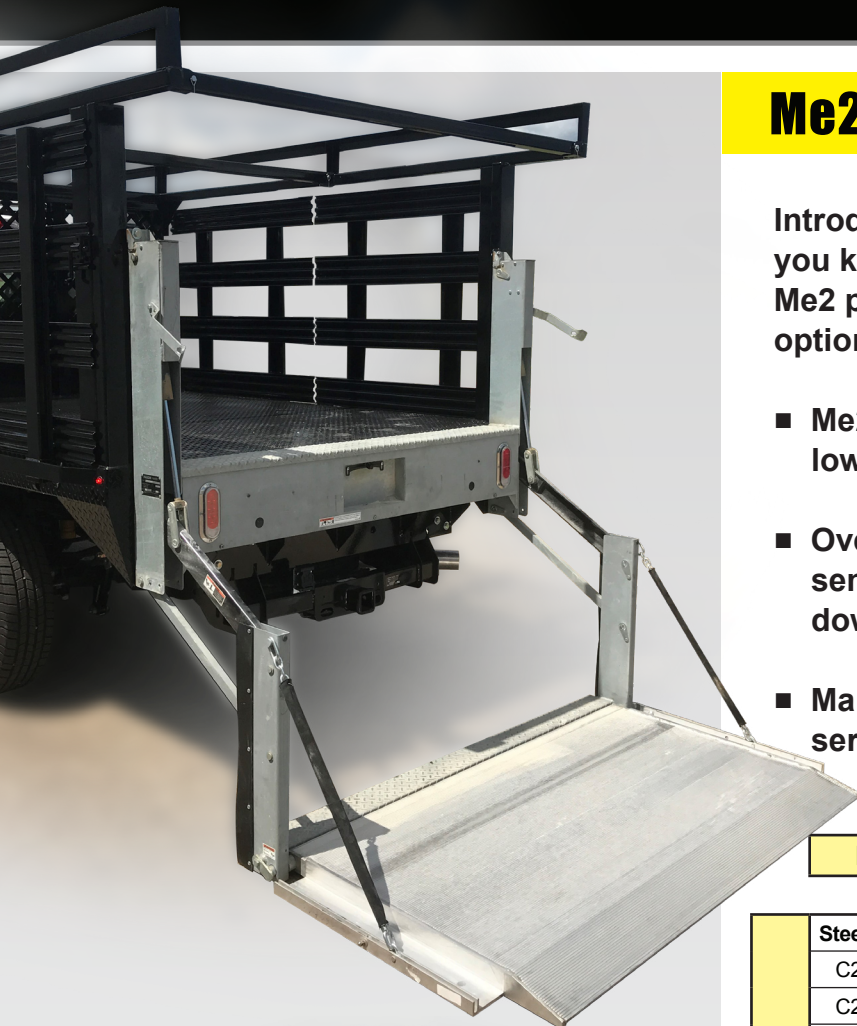


LIGHT DUTY SERIES

Me2 Stakebed & Van Body



Me2 SPECIFICATIONS

Introducing the all-new Me2 just like the liftgates you know, but at significantly reduced cost. The Me2 provides direct lifting with level ride and ramp options that increase loadable platform depth.

- Me2 liftgates are built with high performance and low maintenance in mind
- Oversized, fully enclosed pump and motor assembly helps ensure increased life and less downtime
- Maintenance-free bearings reduce the need for service

Model No.	Load Area	Ramp	Travel	Weight
-----------	-----------	------	--------	--------

1600 lbs	Steel Platform				
	C2-92-1650 TP35	87" X 35"	6"	30" to 50"	628 lbs
	C2-92-1650 TP41	87" X 41"	6"		655 lbs
	Aluminum Platform				
	C2-92-1650 EA37	87" X 37"	6"	30" to 50"	561 lbs
	C2-92-1650 EA41	87" X 41"	6"		577 lbs
	Grip Strut Platform				
	C2-92-1650 GS33	87" X 33"	6"	30" to 50"	628 lbs
	Bar Grate Platform				
	C2-92-1650 BG33	87" X 41"	6"	30" to 50"	628 lbs



LIGHT DUTY SERIES

Me2 Stakebed & Van Body

MAXON®

Me2 standard features

- Dual hydraulic lifting cylinders
- Maintenance-free components
- Protected / recessed main control with time-out feature
- Steel or aluminum platforms
- Fully-enclosed hydraulic system

Optional features

- Light Kits
- Remote Pendant Control
- Rubber Platform Protection Bumpers
- Tire Rack Kit



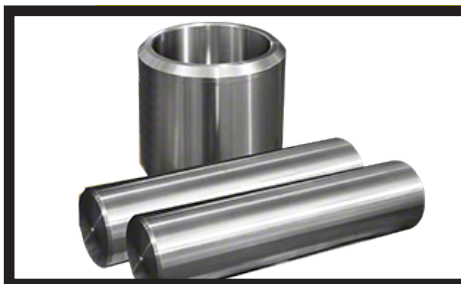
Enclosed Pump & Motor Assembly

The Me2 pump and motor assembly is fully enclosed and shielded from the elements.



Main Control with Time-Out Feature

A timed toggle control prevents unauthorized use. It automatically deactivates 90 seconds after operation.



Maintenance Free Pins & Bushings

Maintenance free pins and bushings allow for years of maintenance free service.



Power Cable with Full Length Ground

The dedicated ground cable helps to get the maximum lifespan out of the vehicles battery.

Distributed by:

M-213-1119



Maxon Lift Corp. 11921 Slauson Ave., Santa Fe Springs, CA 90670
800.227.4116 Fax 888.771.7713, www.maxonlift.com