

LIFTGATE SERIAL PLATE



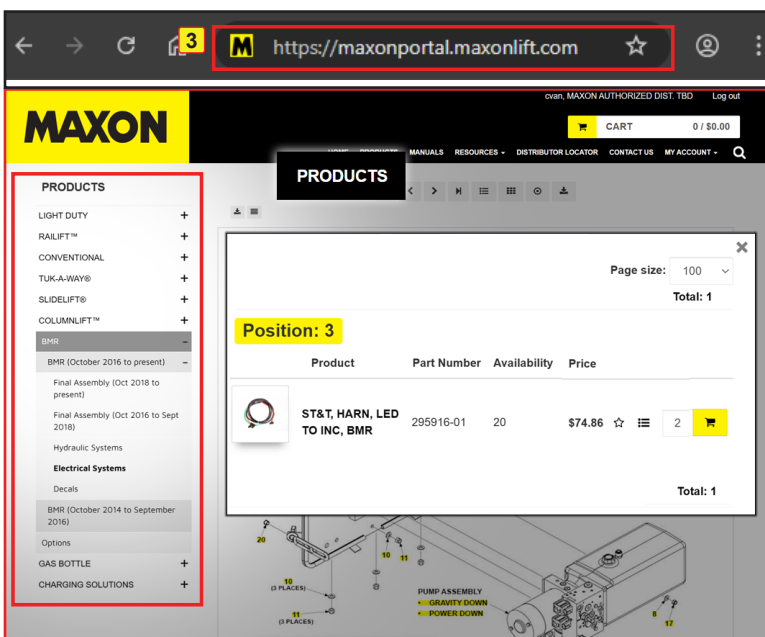
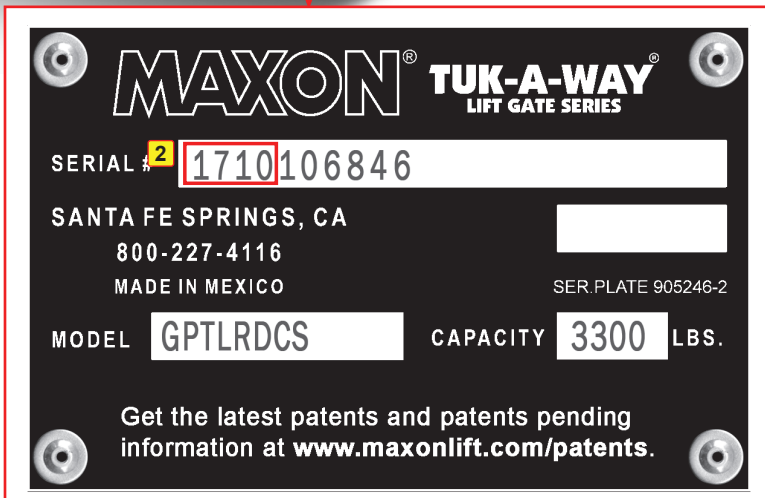
IDENTIFY THE MANUFACTURED DATE RANGE

- 1 Locate your serial plate on your liftgate. This plate is located on the main frame of the liftgate
- 2 Look for the Serial # field. Identify the first four digits.

If your liftgate was manufactured BEFORE June 2014, your plate will show the Month first followed by the Year.

If your liftgate was manufactured AFTER June 2014, your plate will show the Year first followed by the Month.

- 5 Once you identify your liftgate's manufactured date, go to the Maxon parts portal (maxonportal.maxonlift.com). Use the product menu tree to find the correct parts breakdown for your gate.



M-297-0525



Maxon Lift Corp. 11921 Slauson Ave., Santa Fe Springs, CA 90670
800.227.4116 Fax 888.771.7713 www.maxonlift.com